

PRODUCT INFORMATION PACKET



Model No: 445THFN17051
Catalog No: 445THFN17051
150,1800,TEBC,445T,3/60/460

Regal and Marathon are trademarks of Regal Rexnord Corporation or one of its affiliated companies.
©2025 Regal Rexnord Corporation, All Rights Reserved. MC017097E



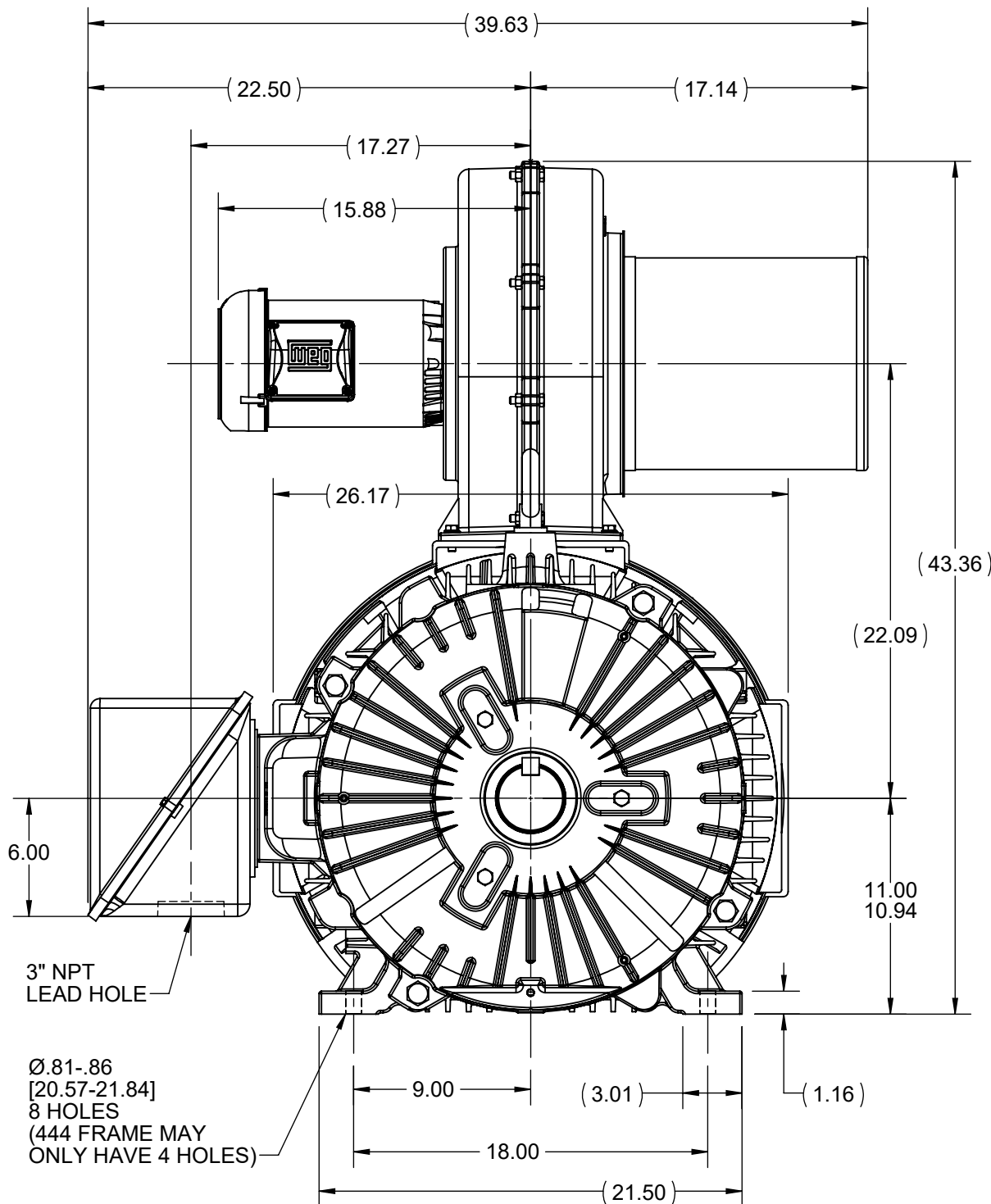
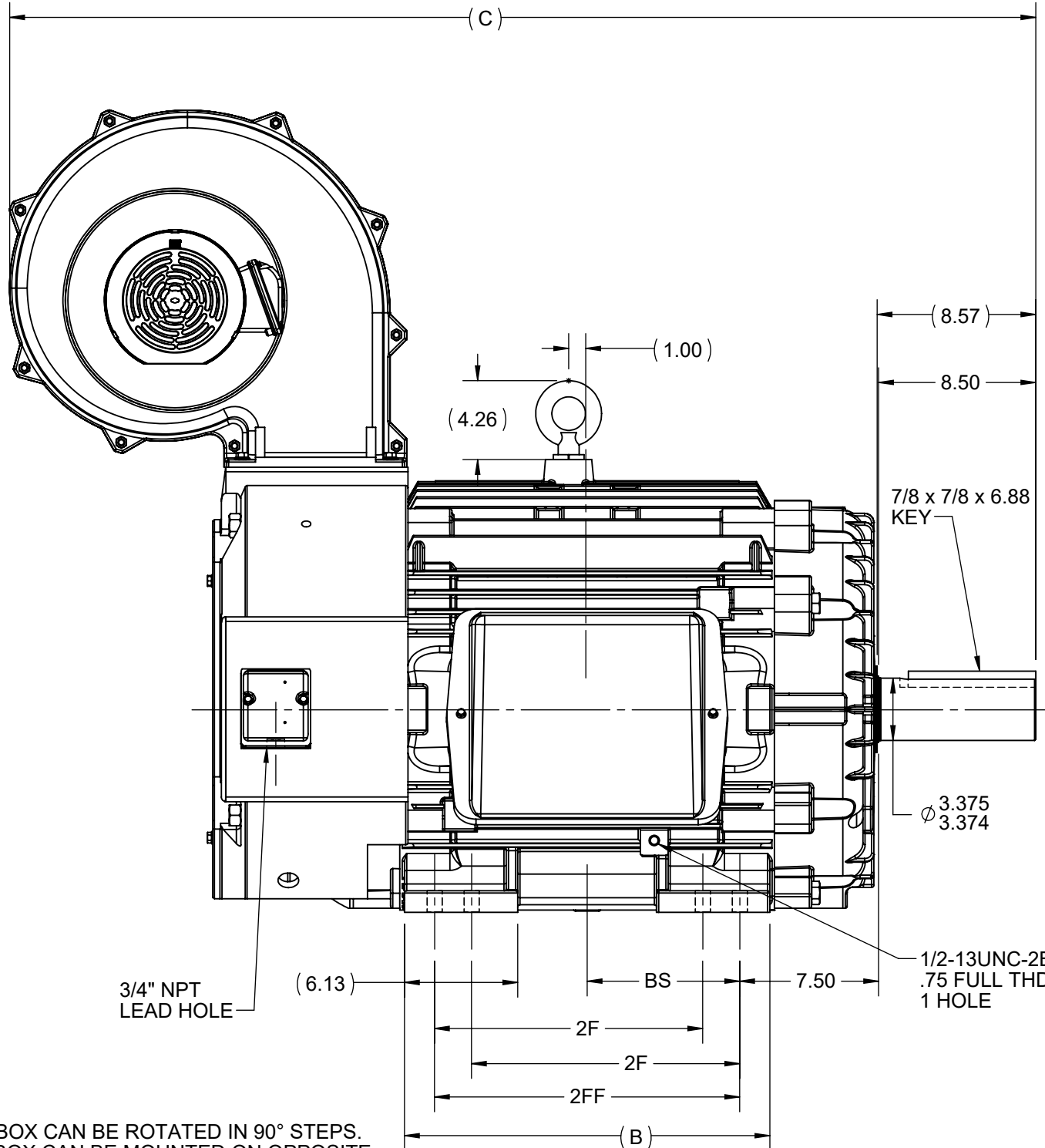
Nameplate Specifications

Phase	3	Output HP	150 Hp
Output KW	112.0 kW	Voltage	460 V
Speed	1790 r/min	Service Factor	1
Frame	445T	Enclosure	TEBC-RADIAL
Thermal Protection	Thermostat	Efficiency	94.5 %
Ambient Temperature	40 °C	Frequency	60 Hz
Current	170.0 A	Power Factor	87.5
Duty	Continuous	Insulation Class	H
Design Code	INV	KVA Code	J
Drive End Bearing Size	6318	Opp Drive End Bearing Size	6316
UL	Recognized	CSA	Y
CE	Y	IP Code	43
Number of Speeds	1		

Technical Specifications

Electrical Type	Squirrel Cage Inverter Duty	Starting Method	Inverter Only
Poles	4	Rotation	Reversible
Resistance Main	.0245 O	Mounting	Rigid Base
Motor Orientation	Horizontal	Drive End Bearing	Ball
Opp Drive End Bearing	Ball	Frame Material	Cast Iron
Shaft Type	T	Assembly/Box Mounting	F1/F2 CAPABLE
Outline Drawing	B-SS517651-2025	Connection Drawing	A-EE7300T

This is an uncontrolled document once printed or downloaded and is subject to change without notice. Date Created:04/22/2025



- NOTES:
1. CONDUIT BOX CAN BE ROTATED IN 90° STEPS. CONDUIT BOX CAN BE MOUNTED ON OPPOSITE SIDE BY REMOVING BRACKETS AND TURNING FRAME 180°
 2. NAMEPLATES TO BE READ FROM CONDUIT BOX SIDE OF MOTOR
 3. BLOWER CAN BE ROTATED IN 90° STEPS.

DASH	FRAME	B	C	2F	2FF	BS
2025	444/445T	19.75 [501.65]	55.47 [1369.82]	14.50 [368.30]	16.50 [419.10]	8.25 [209.55]

DRAWING REVISION D	REVISION BY BISWA	REV DATE/© DATE 18/02/2025
REQUEST NUMBER NMR-0237153	APPROVED BY SBD	DATE 18/02/2025
REQUEST NUMBER DESCRIPTION DRAWING UPDATED		
COPYRIGHT (PER REVISION DATE) MARATHON ELECTRIC, LLC. ALL RIGHTS RESERVED. PROPRIETARY AND CONFIDENTIAL INFORMATION - THIS DOCUMENT IS THE PROPERTY OF MARATHON ELECTRIC, LLC. (OWNER) AND CONTAINS OWNER'S PROPRIETARY INFORMATION. ANY PERSON, CORPORATION OR OTHER FIRM RECEIVING IT IS DEEMED, BY RECEIVING IT, TO AGREE THAT IT, AND/OR ANY PART OF IT, SHALL NOT BE DISCLOSED TO ANY PERSON, CORPORATION OR OTHER ENTITY, DUPLICATED, AND/OR USED, EXCEPT AS EXPRESSLY APPROVED IN WRITING IN ADVANCE BY OWNER. THIS DOCUMENT SHALL BE RETURNED TO OWNER UPON REQUEST. IT MAY BE SUBJECT TO CERTAIN RESTRICTIONS UNDER APPLICABLE EXPORT CONTROL LAWS AND REGULATIONS.		

TOLERANCES (EXCEPT AS NOTED):
DEC. INCH mm ANGLE
.X ±0.1 [±3] ±7° 30"
.XX ±0.03 [±0.8]
.XXX ±0.005 [±0.13]
.XXXX ±0.0005 [±0.013]
REMOVE BURRS & BREAK SHARP
EDGES: .003/.015 [0.08/.38] X 45°
CORNER FILLETS: R.02 [5]
MACHINED SURFACES: 200 INCH/mm 5.1
mm DIMENSIONS IN [BRACKETS]
ARE FOR REFERENCE ONLY

DRAWN BY AJW
DATE 06-09-2015
APPROVED BY DJK
DATE 08-17-2015
REFERENCE
THIRD ANGLE PROJECTION

marathon™

OUTLINE

440T FR.-RADIAL BLOWER-TACH PROV.

MATERIAL

PROCESS/FINISH

SIZE
B

DRAWING NUMBER
SS517651

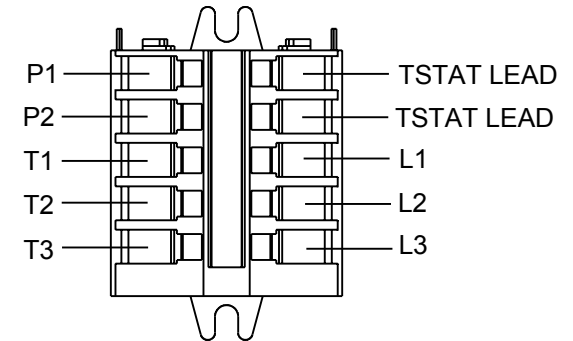
SHEET
1 OF 1

THREE PHASE - SINGLE VOLTAGE
MOTOR - CONDUIT BOX @ 'A'

TO REVERSE ROTATION:
INTERCHANGE ANY TWO LINE
LEAD CONNECTIONS

NOTE FOR FACTORY USE ONLY:
TO SURGE TEST:
FOR 3 LEAD COMMON CONNECT:
CONNECT P1 TO T1 THEN P2 TO L1
FOR 6 LEAD COMMON CONNECT:
CONNECT P1 TO BOTH T1
THEN P2 TO L1

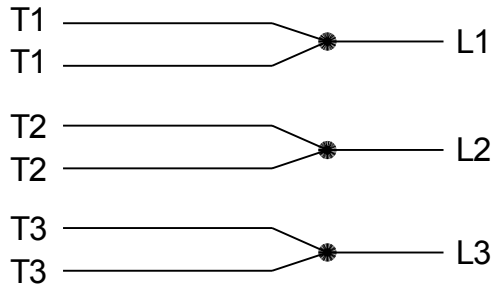
TERMINAL BLOCK WHEN SPECIFIED



PURPLE P1 (TB1)
BLACK T1 (U1)
RED T2 (V1)
BLUE T3 (W1)
PURPLE P2 (TB2)

T2BM
T6AW
T6AL
T6Z
T4EG
T4BF
T8A
T6H
T6A
T4AX
T4A
T2A
T2F

IF MOTOR HAS MULTIPLE
T'S PER LEAD CONNECT
TOGETHER LIKE T'S




A-9806 DECAL

VIEW OF TERMINAL END

DRAWING REVISION AB	REVISION BY AJW	DATE 07-17-2015
ECO ECO-0081632	APPROVED BY T.VUE	DATE 07-17-2015
ECO DESCRIPTION REV'D IEC MARKINGS PER IEC-60034-8		
<small>COPYRIGHT REGAL BELOIT AMERICA, INC. ALL RIGHTS RESERVED. PROPRIETARY AND CONFIDENTIAL INFORMATION - THIS DOCUMENT IS THE PROPERTY OF REGAL BELOIT AMERICA, INC. ("OWNER") AND CONTAINS OWNER'S PROPRIETARY INFORMATION. ANY PERSON, CORPORATION OR OTHER FIRM RECEIVING IT IS DEEMED, BY RECEIVING IT, TO AGREE THAT IT, AND/OR ANY PART OF IT, SHALL NOT BE DISCLOSED TO ANY PERSON, CORPORATION OR OTHER ENTITY, DUPLICATED, AND/OR USED, EXCEPT AS EXPRESSLY APPROVED IN WRITING IN ADVANCE BY OWNER. THIS DOCUMENT SHALL BE RETURNED TO OWNER UPON REQUEST. IT MAY BE SUBJECT TO CERTAIN RESTRICTIONS UNDER APPLICABLE EXPORT CONTROL LAWS AND REGULATIONS.</small>		

DRAWN BY LZ
DATE 01-04-1994
APPROVED BY GK
DATE 01-20-1994
REFERENCE
THIRD ANGLE PROJECTION

 Regal Beloit America, Inc.		
DESCRIPTION CONN DIAGRAM-EXTERNAL 3Ø-SINGLE VOLT-MOTOR WITH PROTECTOR		
MATERIAL	PROCESS/FINISH	
SIZE A	DRAWING NUMBER EE7300T	SHEET 1 OF 1