

# PRODUCT INFORMATION PACKET



Model No: 445THFCD19038  
Catalog No: W620  
150,1800,TEFC,445T,3/60/460

**Nameplate Specifications**

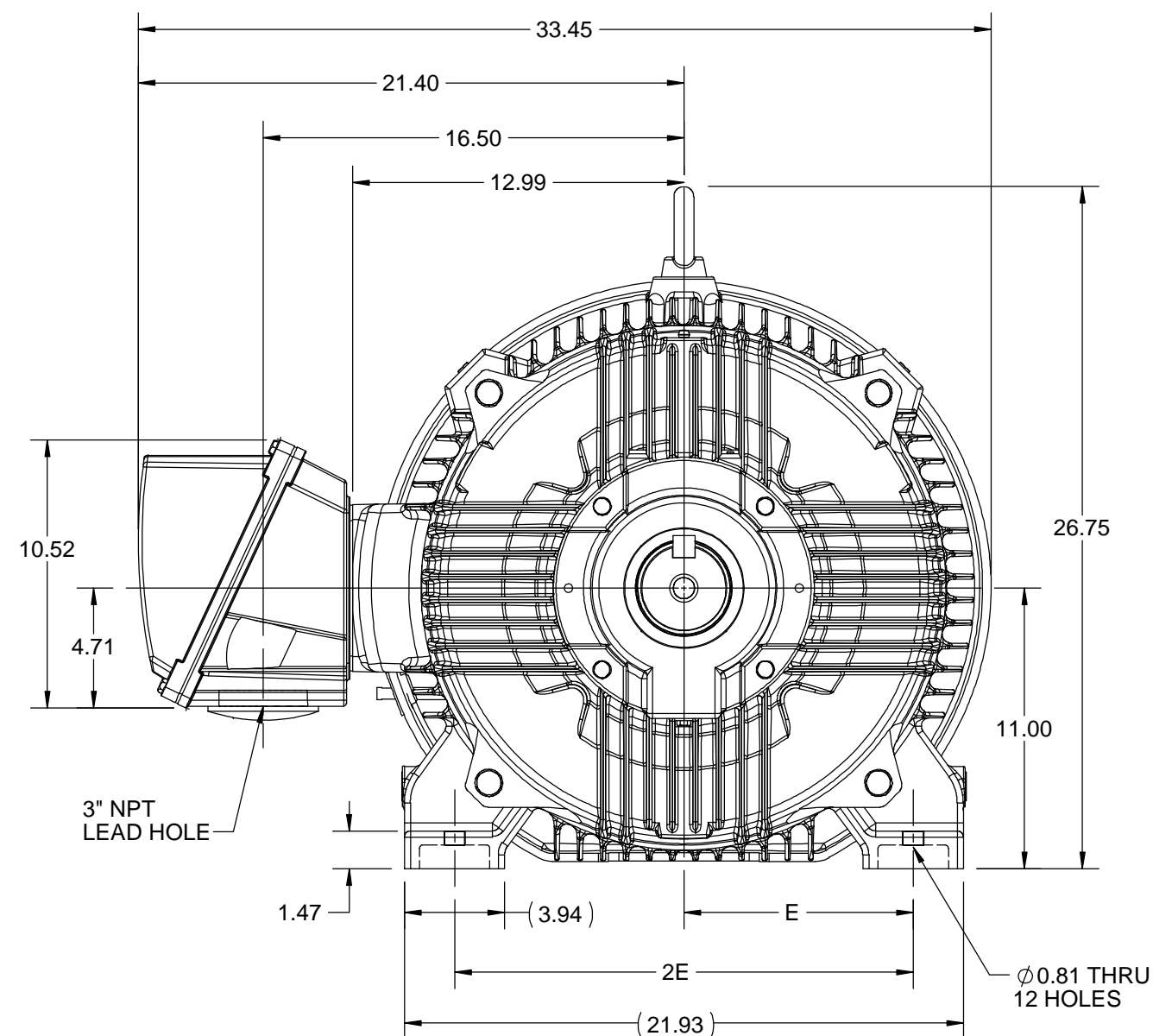
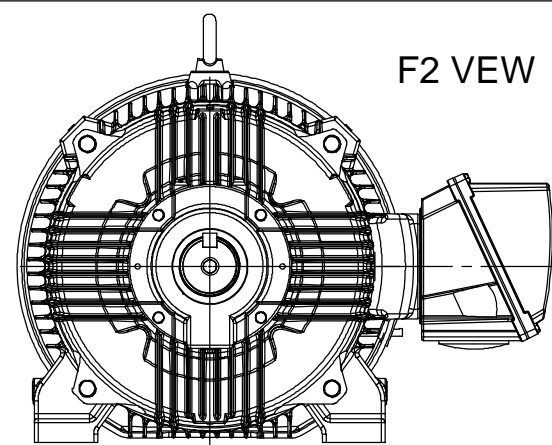
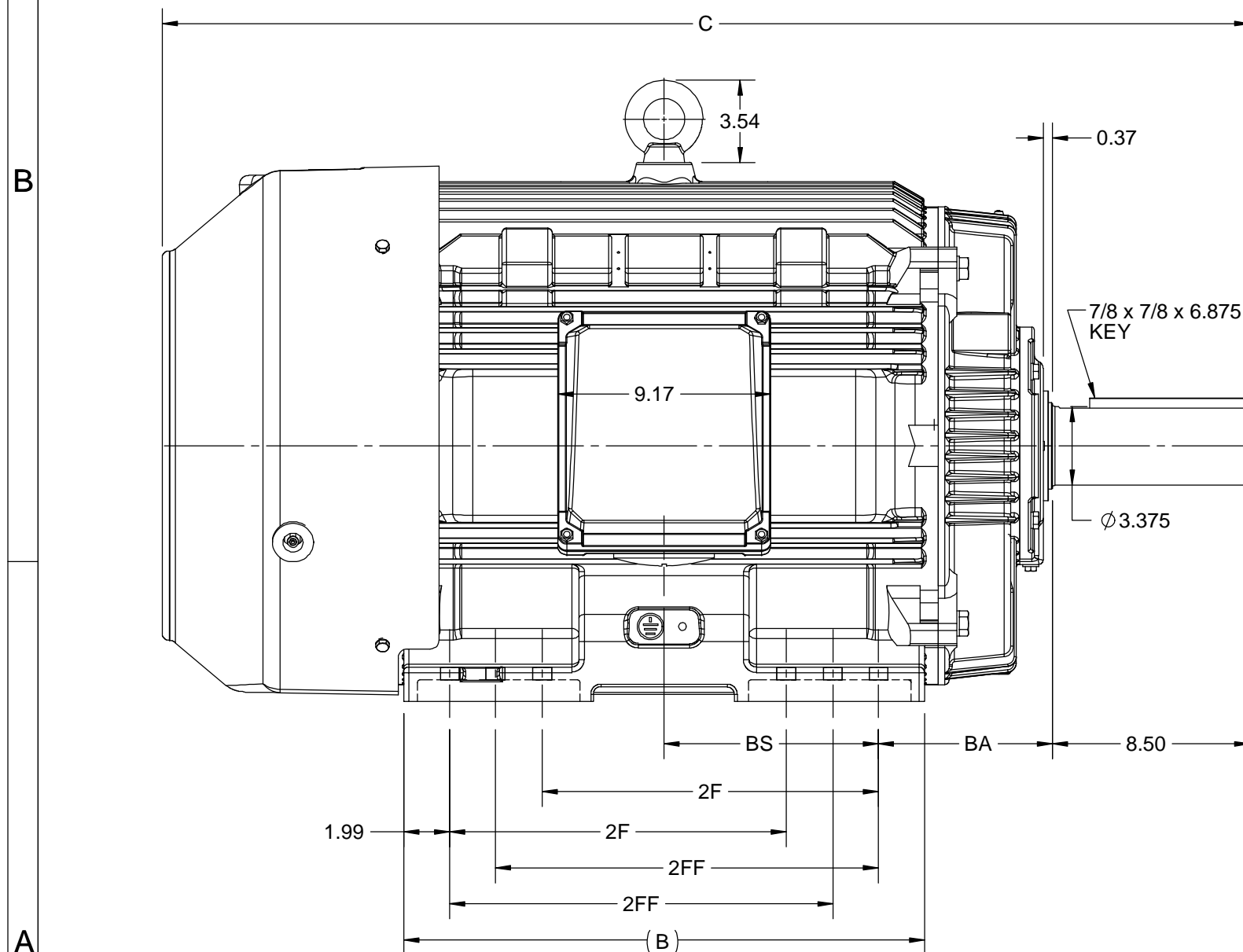
Phase	3	Output HP	150 Hp
Output KW	112.0 kW	Voltage	460 V
Speed	1790 r/min	Service Factor	1.15
Frame	445T	Enclosure	Totally Enclosed Fan Cooled
Thermal Protection	No Protection	Efficiency	95.8 %
Ambient Temperature	40 °C	Frequency	60 Hz
Current	169.0 A	Power Factor	87
Duty	Continuous	Insulation Class	H
Design Code	B	KVA Code	G
Drive End Bearing Size	NU319	Opp Drive End Bearing Size	6317
UL	Listed	CSA	Y
CE	Y	IP Code	56
Number of Speeds	1	Hazardous Location	DIVISION 2 T2B

**Technical Specifications**

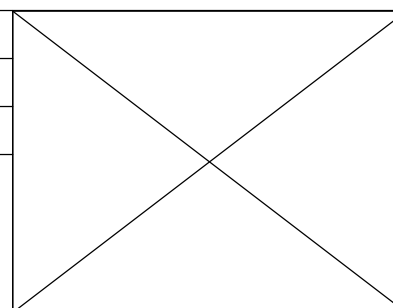
Electrical Type	Squirrel Cage Inverter Rated	Starting Method	Line Or Inverter
Poles	4	Rotation	Selective Clockwise
Resistance Main	.0294 O	Mounting	Rigid Base
Motor Orientation	Horizontal	Drive End Bearing	Roller
Opp Drive End Bearing	Ball	Frame Material	Cast Iron
Shaft Type	T	Assembly/Box Mounting	F1/F2 CAPABLE
Outline Drawing	SS557668	Connection Drawing	EE7300U


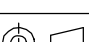
This is an uncontrolled document once printed or downloaded and is subject to change without notice. Date Created:05/07/2025

4						3		
B	C	E	2E	2F	2FF	BA	BS	MOUNTING
22.44	46.83	9.00	18.00	14.50	16.50	7.50	9.24	F1 OR F2



DRAWING REVISION <b>C</b>	REVISION BY <b>BISWA</b>	DATE <b>15/10/2020</b>
ECO <b>ECO-0195135</b>	APPROVED BY <b>GNK</b>	DATE <b>15/10/2020</b>
ECO DESCRIPTION		
<b>DRAWING UPDATED</b>		
<p>COPYRIGHT REGAL BELOIT AMERICA, INC. ALL RIGHTS RESERVED.</p> <p>PROPRIETARY AND CONFIDENTIAL INFORMATION - THIS DOCUMENT IS THE PROPERTY OF REGAL BELOIT AMERICA, INC. ("OWNER") AND CONTAINS OWNER'S PROPRIETARY INFORMATION. ANY PERSON, CORPORATION OR OTHER FIRM RECEIVING IT IS DEEMED, BY RECEIVING IT, TO AGREE THAT IT, AND/OR ANY PART OF IT, SHALL NOT BE DISCLOSED TO ANY PERSON, CORPORATION OR OTHER ENTITY, DUPLICATED, AND/OR USED, EXCEPT AS EXPRESSLY APPROVED IN WRITING IN ADVANCE BY OWNER. THIS DOCUMENT SHALL BE RETURNED TO OWNER UPON REQUEST. IT MAY BE SUBJECT TO CERTAIN RESTRICTIONS UNDER APPLICABLE EXPORT CONTROL LAWS AND REGULATIONS.</p>		



DRAWN BY <b>BISWA</b>		 <b>Regal</b> Beloit America, Inc.	
DATE <b>24/12/2018</b>		DESCRIPTION  <div style="text-align: center;"> <b>OUTLINE</b>  <b>444/445T FR-NEMA-SD &amp; IEEE841</b> </div>	
APPROVED BY <b>SBD</b>			
DATE <b>24/12/2018</b>			
REFERENCE			
MATERIAL		PROCESS/FINISH	
THIRD ANGLE PROJECTION		SIZE <b>B</b>	DRAWING NUMBER <b>SS557668</b>
			SHEET <b>1 OF 1</b>

## IF MOTOR HAS 9 LEADS



## IF MOTOR HAS 6 LEADS

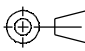


A-9806 DECAL IF CALLED FOR

## IF MOTOR HAS 12 LEADS



VIEW OF TERMINAL END

DRAWING REVISION L	REVISION BY AJW	DATE 05-04-2015	TOLERANCES UNLESS OTHERWISE SPECIFIED: <div><div>DEC.</div><div>INCH</div><div>mm</div><div>ANGLE</div></div> <div><div>.X</div><div>±0.1</div><div>[±2.5]</div><div>±7' 30"</div></div> <div><div>.XX</div><div>±0.02</div><div>[±0.51]</div></div> <div><div>XXX</div><div>±0.005</div><div>[±0.127]</div></div> <div><div>.XXXX</div><div>±0.0005</div><div>[±0.0127]</div></div> <div>REMOVE BURRS &amp; BREAK SHARP EDGES: .003/.015 [.076/.381] X 45° CORNER FILLETS: R.02 [.51] MACHINED SURFACES: 200 INCH 5.1 mm mm SHOWN IN [BRACKETS]</div>		DRAWN BY DRS	<div><div>REGAL™</div><div>Regal Beloit America, Inc.</div></div>		
ECO ECO-0077067	APPROVED BY EWH	DATE 05-05-2015			DATE 09-27-1996			
ECO DESCRIPTION UPDATED TO SOLIDWORKS			COPYRIGHT REGAL BELOIT AMERICA, INC. ALL RIGHTS RESERVED. PROPRIETARY AND CONFIDENTIAL INFORMATION - THIS DOCUMENT IS THE PROPERTY OF REGAL BELOIT AMERICA, INC. ("OWNER") AND CONTAINS OWNER'S PROPRIETARY INFORMATION. ANY PERSON, CORPORATION OR OTHER FIRM RECEIVING IT IS DEEMED, BY RECEIVING IT, TO AGREE THAT IT, AND/OR ANY PART OF IT, SHALL NOT BE DISCLOSED TO ANY PERSON, CORPORATION OR OTHER ENTITY, DUPLICATED, AND/OR USED, EXCEPT AS EXPRESSLY APPROVED IN WRITING IN ADVANCE BY OWNER. THIS DOCUMENT SHALL BE RETURNED TO OWNER UPON REQUEST. IT MAY BE SUBJECT TO CERTAIN RESTRICTIONS UNDER APPLICABLE EXPORT CONTROL LAWS AND REGULATIONS.		APPROVED BY GK	DESCRIPTION CONN DIAGRAM-EXTERNAL 3Ø SINDLE VOLTAGE		
					DATE 09-30-1996	MATERIAL		PROCESS/FINISH
			THIRD ANGLE PROJECTION			SIZE A	DRAWING NUMBER EE7300U	SHEET 1 OF 1