

PRODUCT INFORMATION PACKET



Model No: 365TSTD4348
Catalog No: U525B
ODP 365TS-4-75HP 190/380-400V 60Hz Fire

Nameplate Specifications

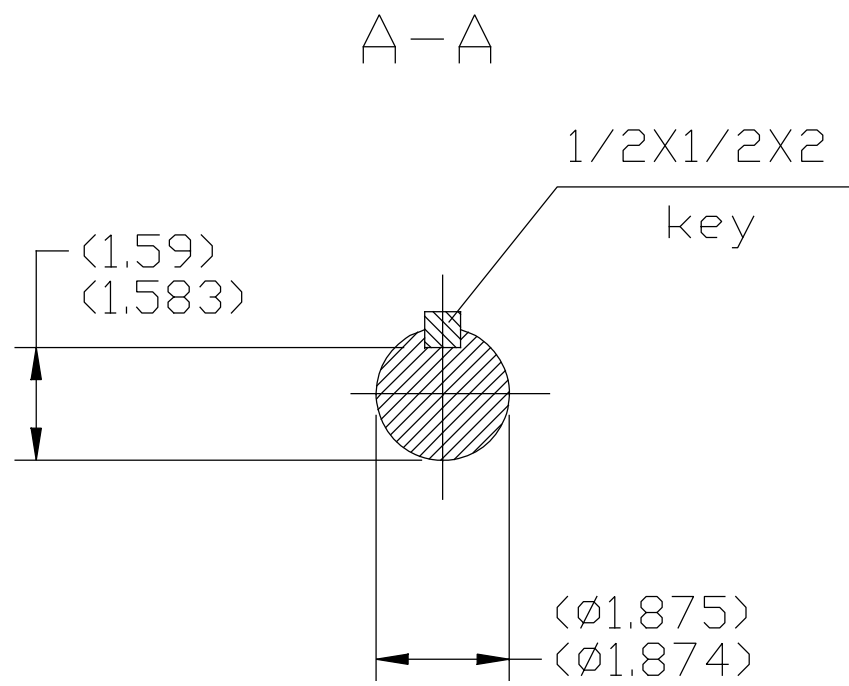
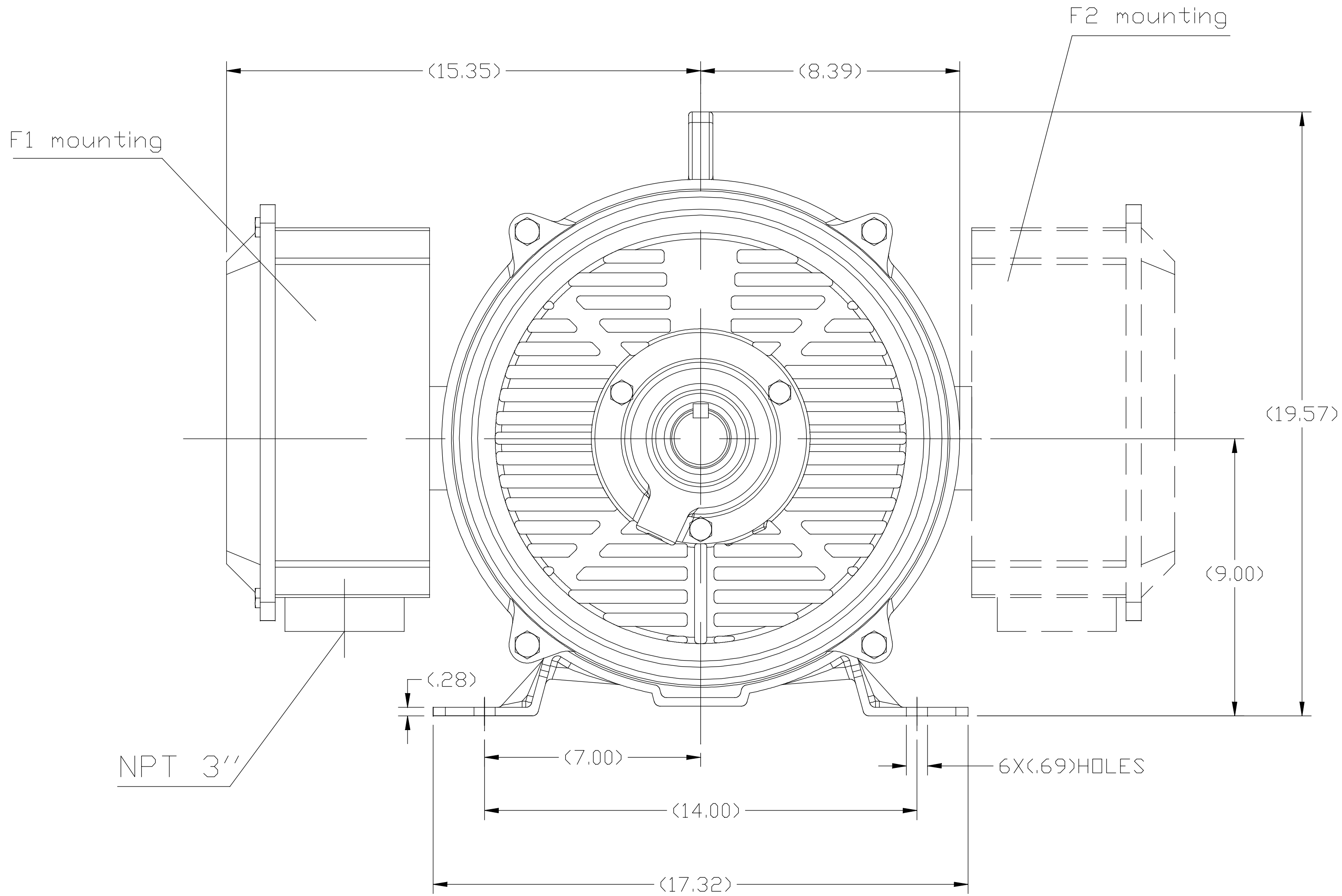
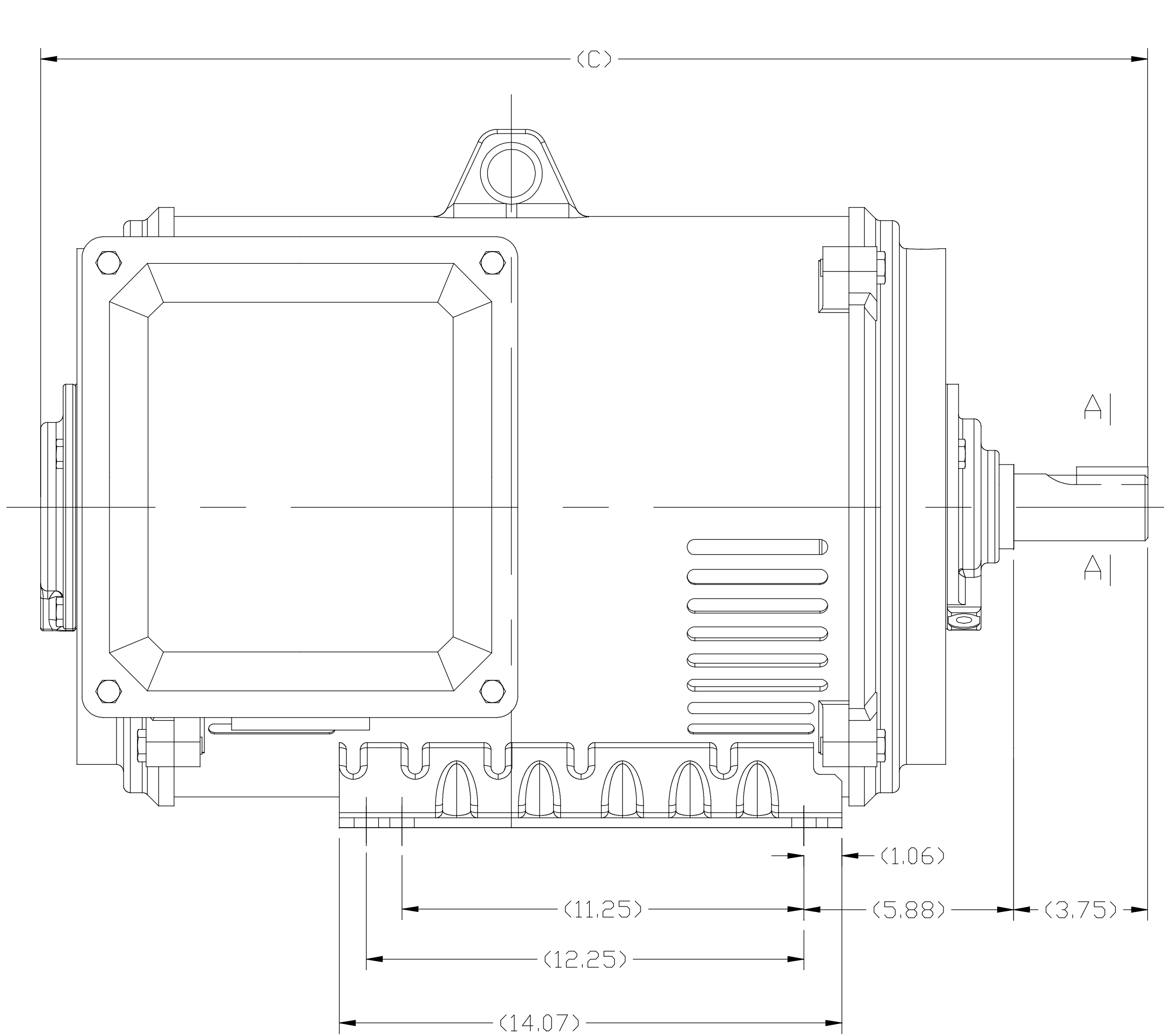
Phase	3	Output HP	75 Hp
Output KW	56.0 kW	Voltage	190/380 V
Speed	1780 r/min	Service Factor	1.15
Frame	365TS	Enclosure	Drip Proof
Thermal Protection	No Protection	Efficiency	94.1 %
Ambient Temperature	50 °C	Frequency	60 Hz
Current	206.0/103.0 A	Power Factor	87
Duty	Continuous	Insulation Class	F
Design Code	B	KVA Code	F
Drive End Bearing Size	6314	Opp Drive End Bearing Size	6313
UL	Listed	CSA	Y
CE	Y	IP Code	23
Number of Speeds	1		

Technical Specifications

Electrical Type	Squirrel Cage Induction Run	Starting Method	Part Wdg Start & Wye Start Delta Run
Poles	4	Rotation	Reversible
Resistance Main	.115 O	Mounting	Rigid Base
Motor Orientation	Horizontal	Drive End Bearing	Ball
Opp Drive End Bearing	Ball	Frame Material	Cast Iron
Shaft Type	TS	Assembly/Box Mounting	F1/F2 CAPABLE
Connection Drawing	EE7308AA	Outline Drawing	SS620908

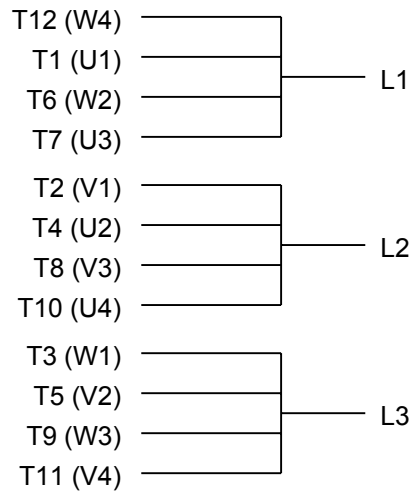
This is an uncontrolled document once printed or downloaded and is subject to change without notice. Date Created:05/07/2025

SS620908

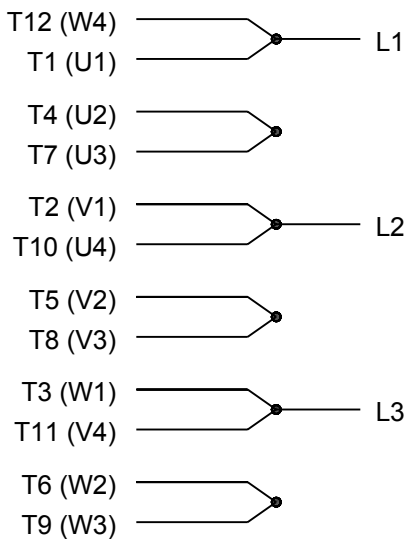


364TS	29.57
365TS	31.14
FRAME	C

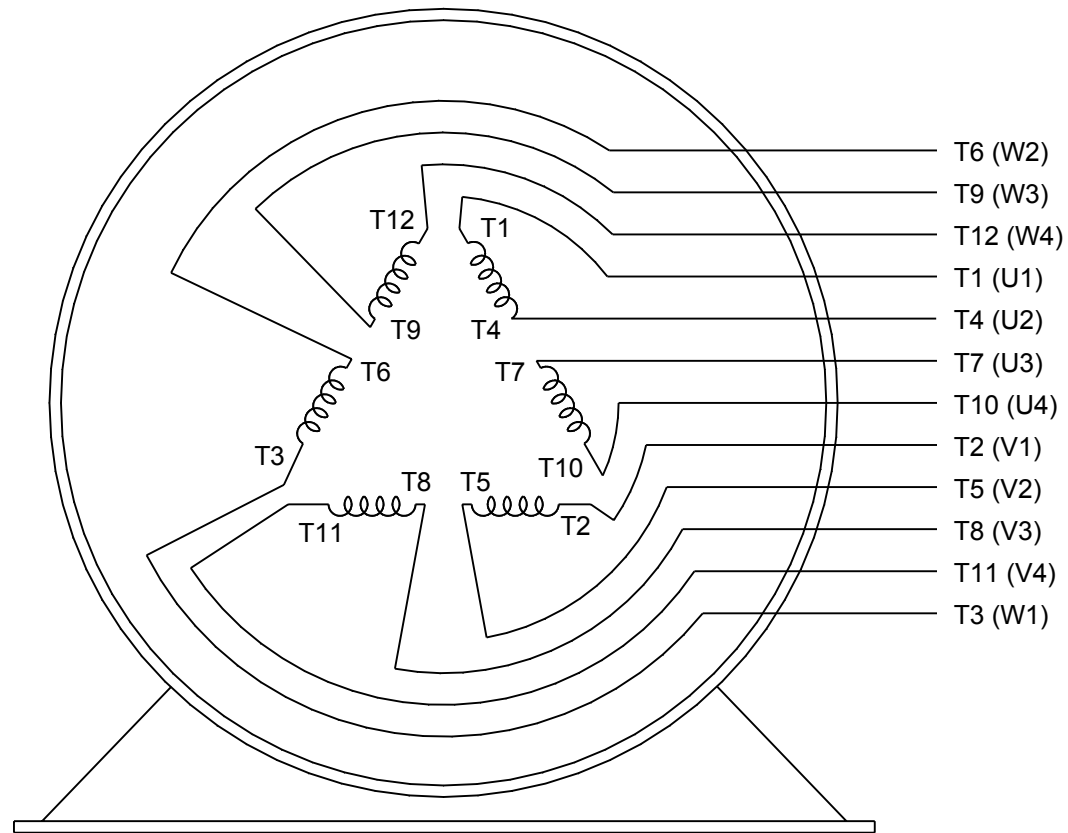
				TOLERANCES UNLESS SPECIFIED		<div>REGAL</div> REGAL-BELOIT CORPORATION		DRAWN NK 04-15-2019		
				DEC.	INCHES			CHK VY 04-15-2019		
				.X	±.1			APPD VY 04-15-2019		
				.XX	±.03			SCALE 1:1		
				.XXX	±.005	TITLE OUTLINE 364/365TS ODP-ROLLED STEEL		REF SS620748		
A	NEW DRAWING	NK 04-15-2019	VY	.XXXX	±.0005			MAT'L.		FMF REGAL-WUXI
NO.	REVISION	BY & DATE	CHK	ANG	± 1/2°	FINISH		PREV		
THIS DRAWING IN DESIGN AND DETAIL IS OUR PROPERTY AND MUST NOT BE USED EXCEPT IN CONNECTION WITH OUR WORK ALL RIGHTS OF DESIGN AND INVENTION ARE RESERVED THIS IS AN ELECTRONICALLY GENERATED DOCUMENT - DO NOT SCALE THIS PRINT			RFP		CAD FILE SS620908		SIZE	DRAWING NO.		REV.
			DIST				B	SS620908		A



LOW VOLTAGE




HIGH VOLTAGE



VIEW OF TERMINAL END

DRAWING REVISION K	REVISION BY AJW	DATE 07-17-2015
ECO ECO-0081632	APPROVED BY T. VUE	DATE 07-17-2015
ECO DESCRIPTION REV'D IEC MARKINGS PER IEC 60034-8		
COPYRIGHT REGAL BELOIT AMERICA, INC. ALL RIGHTS RESERVED. PROPRIETARY AND CONFIDENTIAL INFORMATION - THIS DOCUMENT IS THE PROPERTY OF REGAL BELOIT AMERICA, INC. ("OWNER") AND CONTAINS OWNER'S PROPRIETARY INFORMATION. ANY PERSON, CORPORATION OR OTHER FIRM RECEIVING IT IS DEEMED, BY RECEIVING IT, TO AGREE THAT IT, AND/OR ANY PART OF IT, SHALL NOT BE DISCLOSED TO ANY PERSON, CORPORATION OR OTHER ENTITY, DUPLICATED, AND/OR USED, EXCEPT AS EXPRESSLY APPROVED IN WRITING IN ADVANCE BY OWNER. THIS DOCUMENT SHALL BE RETURNED TO OWNER UPON REQUEST. IT MAY BE SUBJECT TO CERTAIN RESTRICTIONS UNDER APPLICABLE EXPORT CONTROL LAWS AND REGULATIONS.		

DRAWN BY LZ	
DATE 01-12-1994	
APPROVED BY GK	
DATE 01-14-1994	
REFERENCE	
THIRD ANGLE PROJECTION	

 Regal Beloit America, Inc.		
DESCRIPTION CONN DIAGRAM-EXTERNAL 3Ø-2/1 DELTA-12 LEADS		
MATERIAL	PROCESS/FINISH	
SIZE A	DRAWING NUMBER EE7308AA	SHEET 1 OF 1