

PRODUCT INFORMATION PACKET



Model No: 182TTFR16035
Catalog No: M876B
3,1800,TEFC,182HPV,3/60/230/460

Nameplate Specifications

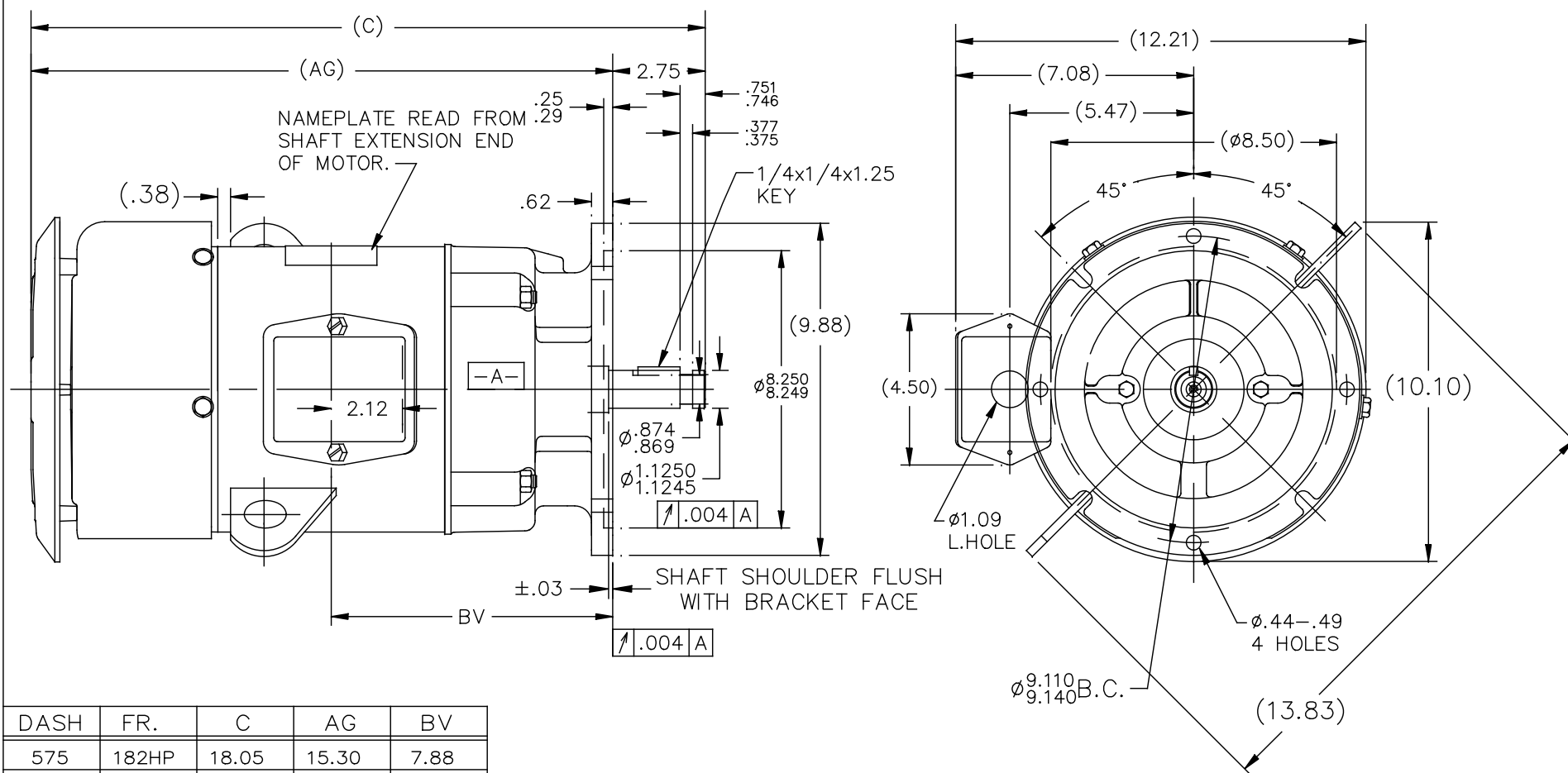
Phase	3	Output HP	3 Hp
Output KW	2.2 kW	Voltage	230/460 V
Speed	1760 r/min	Service Factor	1.15
Frame	182HPV	Enclosure	Totally Enclosed Fan Cooled
Thermal Protection	No Protection	Efficiency	89.5 %
Ambient Temperature	40 °C	Frequency	60 Hz
Current	8.0/4.0 A	Power Factor	80
Duty	Continuous	Insulation Class	F
Design Code	B	KVA Code	K
Drive End Bearing Size	6207	Opp Drive End Bearing Size	6205
UL	Recognized	CSA	Y
CE	Y	IP Code	43
Number of Speeds	1		

Technical Specifications


Electrical Type	Squirrel Cage Induction Run	Starting Method	Across The Line
Poles	4	Rotation	Reversible
Resistance Main	3.76 O	Mounting	Round
Motor Orientation	Shaft Down	Drive End Bearing	Ball
Opp Drive End Bearing	Ball	Frame Material	Rolled Steel
Shaft Type	HP	Assembly/Box Mounting	F1/F2 CAPABLE
Connection Drawing	EE7308	Outline Drawing	SS69314-925

This is an uncontrolled document once printed or downloaded and is subject to change without notice. Date Created:05/07/2025

SS69314



DASH	FR.	C	AG	BV
575	182HP	18.05	15.30	7.88
675	182/4	19.05	16.30	8.38
775	182/4	20.05	17.30	8.88
825	182/4	20.55	17.80	9.12
925	182/4	21.55	18.80	9.62

				TOLERANCES UNLESS SPECIFIED		 Regal Beloit America, Inc.	DRAWN TJB 10-03-2002	
NO.	REVISION	BY & DATE	CHK	ANG	±7'30"		CHK	ML 10-03-2002
5	ADDED ITEM 925	KIR 03/10/16	ST	DEC.	INCHES	TITLE OUTLINE 180HP FR. - BB - TS - TEFC - 'P' BASE MAT'L. FINISH	APPD	PH 10-04-2002
4	ADDED ±.03 TOL. SHAFT SHOULDER	KS 1-3-2012	TB	.X	±.1		SCALE	1=4.5
3	REMOVED "O" DIM. AT NOTE FOR SHAFT SHOULDER	RJW 04-20-2006	ML	.XX	±.03		REF	
2	ADD DASH 825 LINE	RWR 02-06-2004	PH	.XXX	±.005		FMF	
1	NEW DRAWING	MU43594 TJB 10-04-2002	PH	.XXXX	±.0005		PREV	
THIS DRAWING IN DESIGN AND DETAIL IS OUR PROPERTY AND MUST NOT BE USED EXCEPT IN CONNECTION WITH OUR WORK ALL RIGHTS OF DESIGN AND INVENTION ARE RESERVED THIS IS AN ELECTRONICALLY GENERATED DOCUMENT - DO NOT SCALE THIS PRINT		RFP	CAD FILE ss69314		SIZE	DRAWING NO.	PAGE	OF
		DIST LB			A	SS69314		REV. 5



				TOLERANCES UNLESS SPECIFIED		 Regal Beloit America, Inc.	DRAWN RM 11/20/1990				
5	CHG TO REGAL LOGO	SL 09/10/2015	AB	DEC.	INCHES		CHK ML 11/21/1990				
4	REVISED IEC NOTATIONS	MSG 11/15/2011	CMN	.X	±.1		APPD SAS 04/24/2003				
3	ADDED IEC NOTATIONS... (U1), (V1) ETC. MU95194	MSG 5/10/2010	MJS	.XX	±.02		SCALE 1=1				
2	ADDED THE OPTIONAL CORD CONNECTION MU46318	RDH 04/24/2003	DRS	.XXX	±.005	TITLE CONNECTION DIAGRAM 3ø – DUAL VOLTAGE MOTOR	REF				
1	REDRAWN	RM 11/20/1990		.XXXX	±.0005	MAT'L	FMF				
NO.	REVISION	BY & DATE	CHK	ANG	±7"30"	FINISH	PREV				
THIS DRAWING IN DESIGN AND DETAIL IS OUR PROPERTY AND MUST NOT BE USED EXCEPT IN CONNECTION WITH OUR WORK ALL RIGHTS OF DESIGN AND INVENTION ARE RESERVED THIS IS AN ELECTRONICALLY GENERATED DOCUMENT – DO NOT SCALE THIS PRINT			RFP		CAD FILE ee7308		SIZE	DRAWING NO.	PAGE	OF	REV.
			DIST WP				A	EE7308			5