

# PRODUCT INFORMATION PACKET



Model No: 284TSTFNA16616  
Catalog No: 284TSTFNA16616  
20,3600,TEFC,284TSCZ,3/60/230/460

Regal and Marathon are trademarks of Regal Rexnord Corporation or one of its affiliated companies.  
©2025 Regal Rexnord Corporation, All Rights Reserved. MC017097E





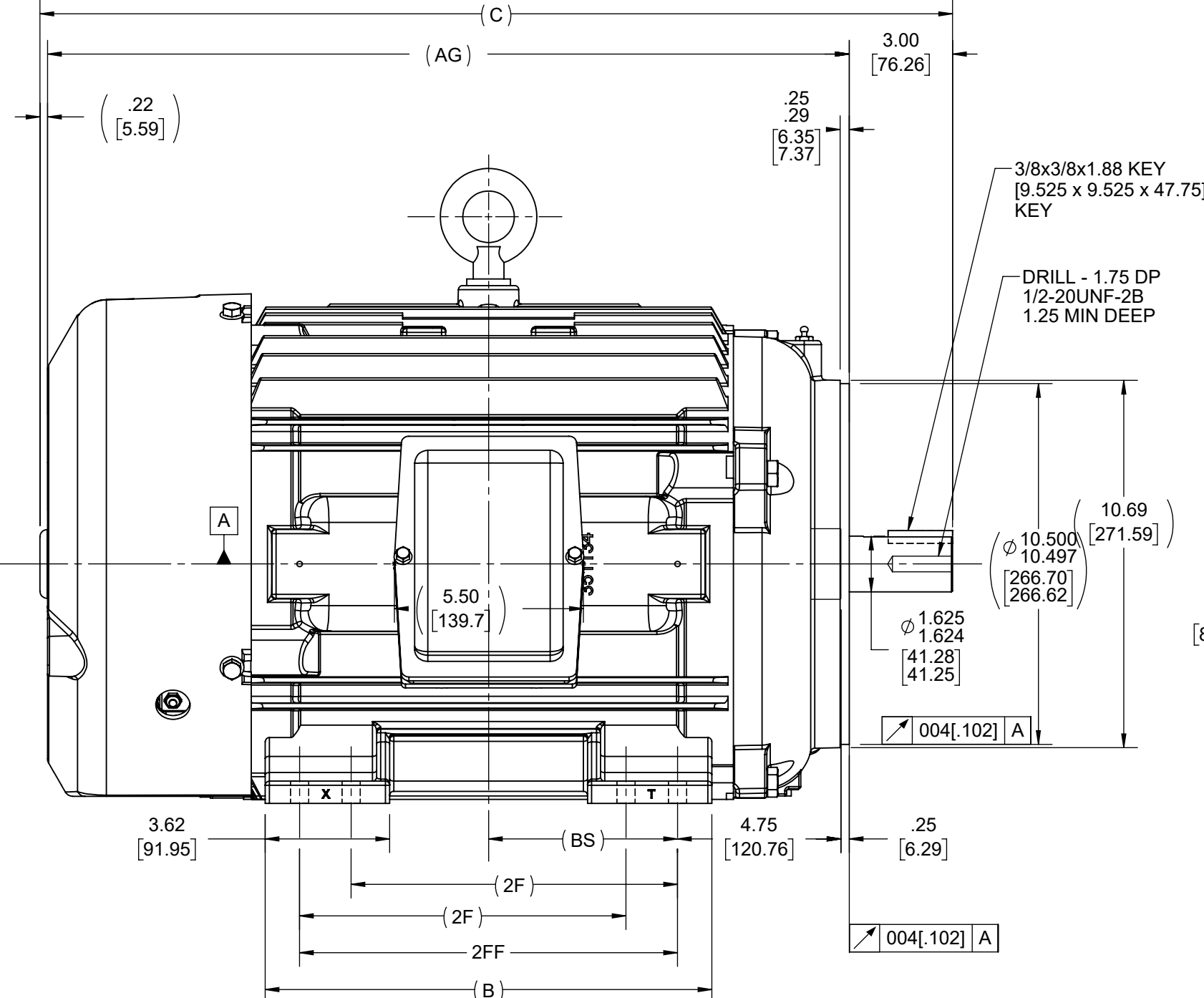
**Nameplate Specifications**

**Technical Specifications**

Outline Drawing	SS311338A-1275	Connection Drawing	A-EE7308AA
-----------------	----------------	--------------------	------------

---

This is an uncontrolled document once printed or downloaded and is subject to change without notice. Date Created:04/08/2025



1. CONDUIT BOX BE ROTATED IN 90° STEPS
2. NAMEPLATE TO BE READ FROM CONDUIT BOX SIDE OF MOTOR
3. CONDUIT BOX CAN BE MOUNTED ON OPPOSITE SIDE BY REMOVING BRACKETS AND TURNING FRAME 180°


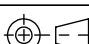
DASH	FRAME	B	C	AG	2F	2FF	BS
1275	284TC	12.50 [317.50]	25.06 [636.53]	22.06 [560.32]	9.50 [241.30]	-----	4.75 [120.65]
1425	284/6TSC	13.00 [330.20]	26.56 [674.62]	23.56 [598.42]	9.50 [241.30]	11.00 [330.20]	5.50 [139.70]

DRAWING REVISION B	REVISION BY BBR	REV DATE/© DATE 12/01/2023
REQUEST NUMBER CR-0015545	APPROVED BY ST	DATE 12/01/2023
REQUEST NUMBER DESCRIPTION		
OUTLINE UPDATED WITH FRAME		
<p>COPYRIGHT (PER REVISION DATE) REGAL BELOIT AMERICA, INC. ALL RIGHTS RESERVED. PROPRIETARY AND CONFIDENTIAL INFORMATION - THIS DOCUMENT IS THE PROPERTY OF REGAL BELOIT AMERICA, INC. ("OWNER") AND CONTAINS OWNER'S PROPRIETARY INFORMATION. ANY PERSON, CORPORATION OR OTHER FIRM RECEIVING IT IS DEEMED, BY RECEIVING IT, TO AGREE THAT IT, AND/OR ANY PART OF IT, SHALL NOT BE DISCLOSED TO ANY PERSON, CORPORATION OR OTHER ENTITY, DUPLICATED, AND/OR USED, EXCEPT AS EXPRESSLY APPROVED IN WRITING IN ADVANCE BY OWNER. THIS DOCUMENT SHALL BE RETURNED TO OWNER UPON REQUEST. IT MAY BE SUBJECT TO CERTAIN RESTRICTIONS UNDER APPLICABLE EXPORT CONTROL LAWS AND REGULATIONS.</p>		

**TOLERANCES (EXCEPT AS NOTED):**

DEC.	INCH	mm	ANGLE
.X	±0.1	[±3]	±7° 30"
.XX	±0.03	[±0.8]	
.XXX	±0.005	[±0.13]	
.XXXX	±0.0005	[±0.013]	

REMOVE BURRS & BREAK SHARP  
 EDGES: .003/0.015 [0.08/.38] X 45°  
 CORNER FILLETS: R2 [5]  
 MACHINED SURFACES:  $\sqrt[200]{\text{INCH}}$   $\sqrt[5.1]{\text{mm}}$   
 mm DIMENSIONS IN [BRACKETS]  
 ARE FOR REFERENCE ONLY

DRAWN BY NIV		 Regal Beloit America, Inc.	
DATE 04/28/2022			
APPROVED BY NIV		DESCRIPTION  <b>OUTLINE</b> 280TSC FR. BB STD 12.50 LAM.	
DATE 04/28/2022			
REFERENCE		MATERIAL	PROCESS/FINISH
THIRD ANGLE PROJECTION		SIZE <b>B</b>	DRAWING NUMBER <b>SS311338A</b>
		SHEET 1 OF 1	



## LOW VOLTAGE


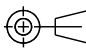


## HIGH VOLTAGE



## VIEW OF TERMINAL END

DRAWING REVISION K	REVISION BY AJW	DATE 07-17-2015
ECO ECO-0081632	APPROVED BY T. VUE	DATE 07-17-2015
ECO DESCRIPTION REV'D IEC MARKINGS PER IEC 60034-8		
COPYRIGHT REGAL BELOIT AMERICA, INC. ALL RIGHTS RESERVED. PROPRIETARY AND CONFIDENTIAL INFORMATION - THIS DOCUMENT IS THE PROPERTY OF REGAL BELOIT AMERICA, INC. ("OWNER") AND CONTAINS OWNER'S PROPRIETARY INFORMATION. ANY PERSON, CORPORATION OR OTHER FIRM RECEIVING IT IS DEEMED, BY RECEIVING IT, TO AGREE THAT IT, AND/OR ANY PART OF IT, SHALL NOT BE DISCLOSED TO ANY PERSON, CORPORATION OR OTHER ENTITY, DUPLICATED, AND/OR USED, EXCEPT AS EXPRESSLY APPROVED IN WRITING IN ADVANCE BY OWNER. THIS DOCUMENT SHALL BE RETURNED TO OWNER UPON REQUEST. IT MAY BE SUBJECT TO CERTAIN RESTRICTIONS UNDER APPLICABLE EXPORT CONTROL LAWS AND REGULATIONS.		

DRAWN BY LZ	 Regal Beloit America, Inc.	
DATE 01-12-1994		
APPROVED BY GK	DESCRIPTION <b>CONN DIAGRAM-EXTERNAL</b> 3Ø-2/1 DELTA-12 LEADS	
DATE 01-14-1994		
REFERENCE	MATERIAL	PROCESS/FINISH
THIRD ANGLE PROJECTION 	SIZE A	DRAWING NUMBER EE7308AA
		SHEET 1 OF 1