

PRODUCT INFORMATION PACKET



Model No: T9860-3
Catalog No: T9860-3
LOCKWASHER (5/16)

Regal and Marathon are trademarks of Regal Rexnord Corporation or one of its affiliated companies.
©2025 Regal Rexnord Corporation, All Rights Reserved. MC017097E



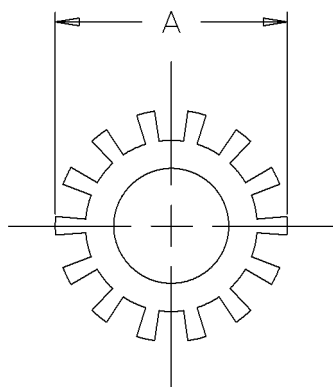
Nameplate Specifications

Technical Specifications

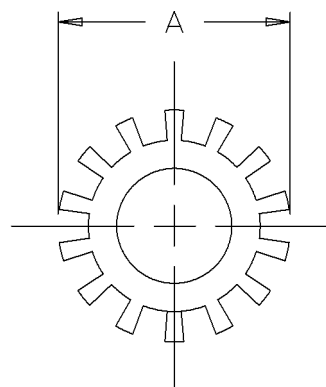
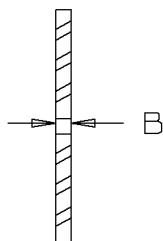
This is an uncontrolled document once printed or downloaded and is subject to change without notice. Date Created:04/05/2025

C - BOLT SIZE USED WITH WASHER

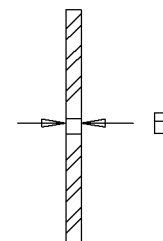
T9860



TYPE A



TYPE B



N.A. TEETH ON LOCKWASHERS ARE TO HAVE BOTH EDGES SHARP.

N.B. ALL ADDITIONS, DELETIONS, AND CHANGES ON THIS DRAWING MUST ALSO BE MADE ON SI3086 AND MEET ANSI B18.21.1 LATEST ISSUE.

T9860-10	B	.670/.694	.032/.040	3/8	STAINLESS STEEL 18-8	
T9860-9	B	.510/.494	.028/.023	1/4	STAINLESS STEEL 18-8	
T9860-8	B	.320/.305	.022/.016	#6 OR M4		E1817 OR E1817-1
T9860-7	(03-18-1988)					
T9860-6	B	.510/.494	.028/.494	1/4		E1817 OR E1817-1
T9860-4	B	.670/.694	.032/.040	3/8		E1817 OR E1817-1
T9860-3	B	.588/.610	.028/.034	5/16		E1817 OR E1817-1
T9860-2	B	.880/.900	.037/.045	1/2		E1817 OR E1817-1
PART NO.	TYPE	A	B	C		FINISH

BUY

					<div>✓ UNLESS OTHERWISE SPECIFIED DIMENSIONS ARE IN INCHES TOL. ON XX± XXX±.005 XXXX±.0005 ANGLES±</div>				
2	09-04-2001	REDRAWN IN ANVIL, REVISED E1427 SPEC TO E1817 CN 31129	BJW		MAX. SURFACE ROUGHNESS UNLESS OTHERWISE NOTED			DRAWN BY B JW	07-27-2001
					FINISH			CHKD BY DRS	09-04-2001
1	06-25-1999	CHANGE SHEET, 02-02-1996 C 06-25-1999 MD, 06-25-1999 MF			MATERIAL			APPD BY HNH	09-04-2001
REV	DATE	CHANGE	NAME	PART NAME MISCELLANEOUS EXTERNAL TOOTH LOCK WASHER					DRWG NO T9860
		PURCHASED		DISTRIBUTION WA - LB - WP - BY		CADD FILE NO.	T9860		

PURCHASED

DISTRIBUTION

WA - LB - WP - BY

CADD FILE NO.

T9860

ERROR: syntaxerror
OFFENDING COMMAND: --nostringval--

STACK:

/im
-savelevel-