

PRODUCT INFORMATION PACKET



Model No: 516391AZ-AV
Catalog No: 516391AZ-AV
B-516391AZ-AV BRKT MCH/319/LKD/B/D/F(IN)/R

Regal and Marathon are trademarks of Regal Rexnord Corporation or one of its affiliated companies.
©2025 Regal Rexnord Corporation, All Rights Reserved. MC017097E



Nameplate Specifications

Technical Specifications

This is an uncontrolled document once printed or downloaded and is subject to change without notice. Date Created:04/05/2025

4

3

Uncontrolled Copy

2

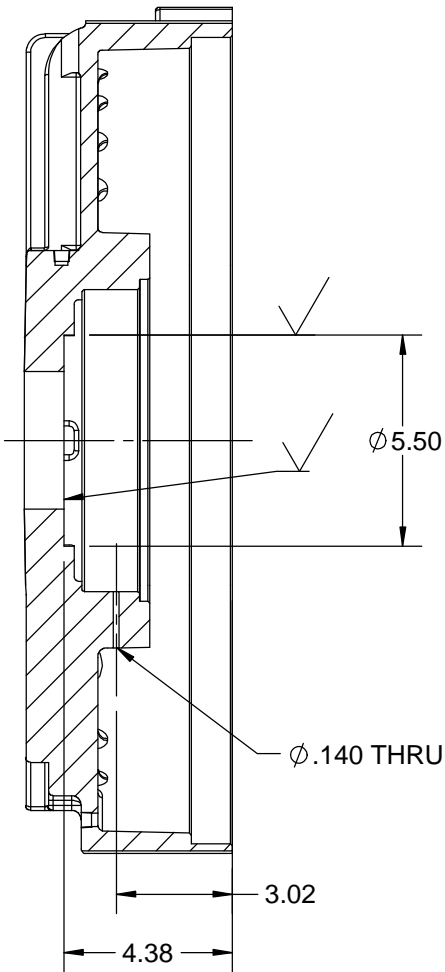
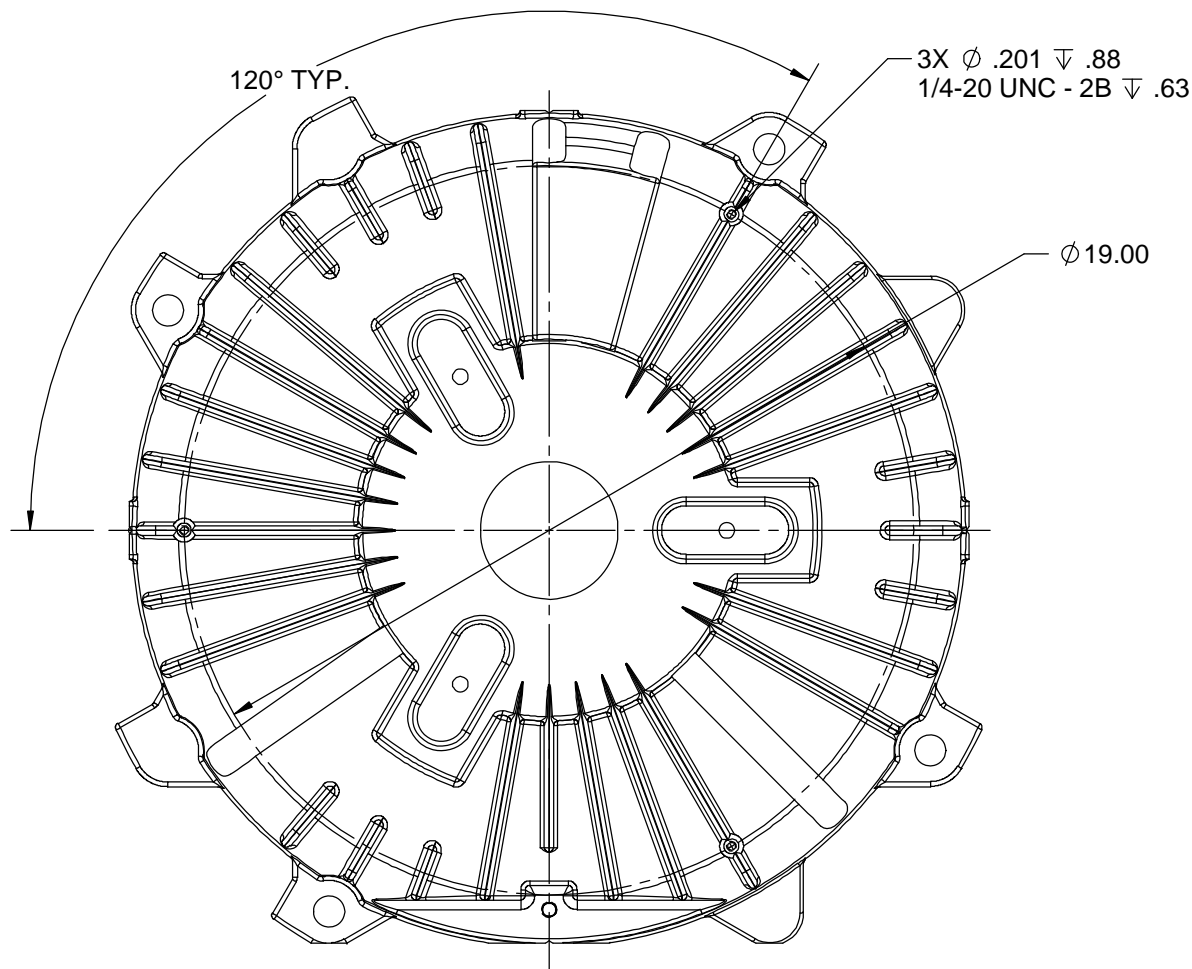
1

B

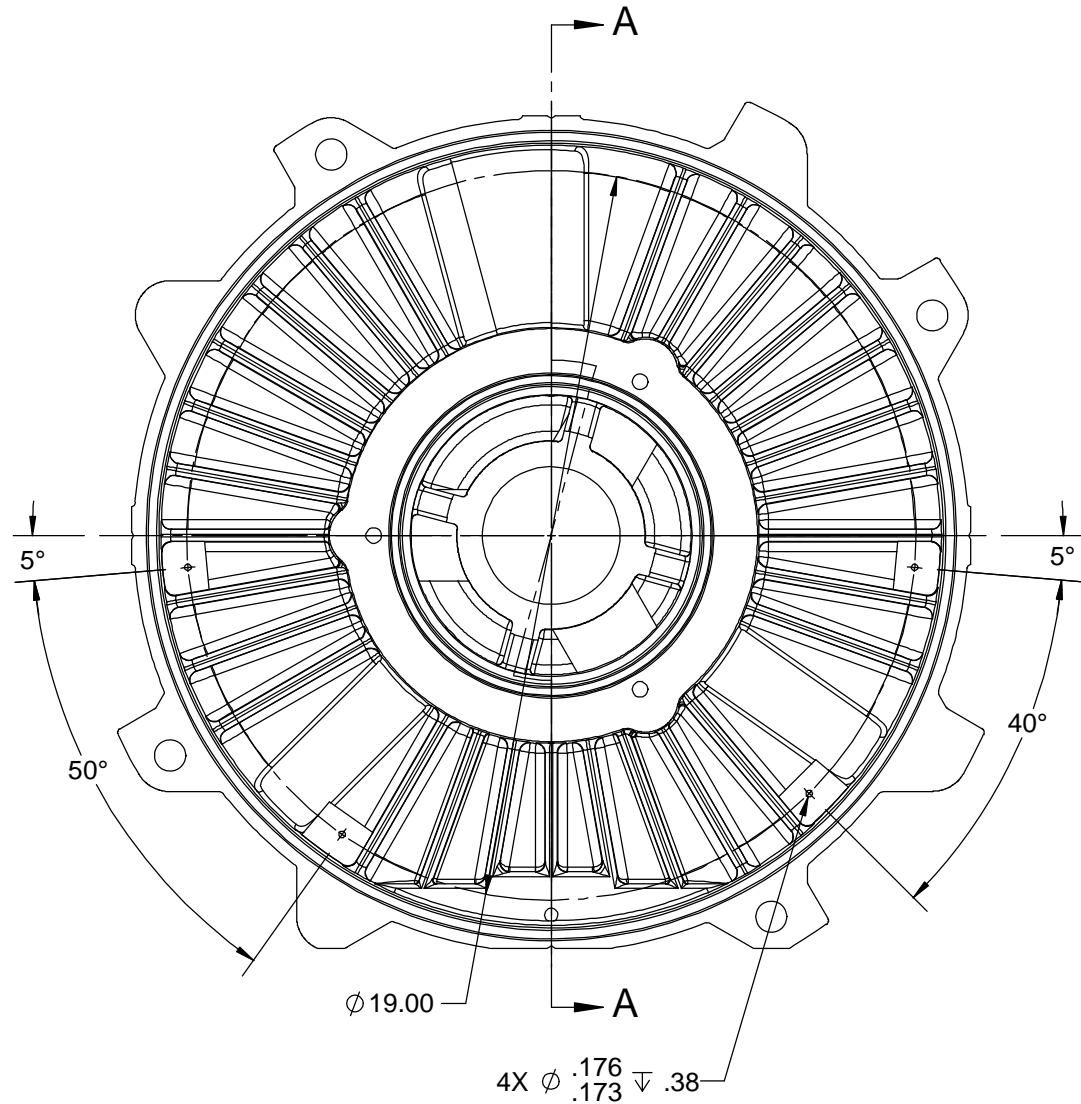
B

A


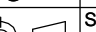
A



SECTION A-A



MAKE FROM: 516391B

DRAWING REVISION C		REVISION BY PG	DATE 04-18-2018	TOLERANCES UNLESS OTHERWISE SPECIFIED: DEC. INCH mm ANGLE .X ±0.1 [±2.5] ±7° 30" .XX ±0.02 [±0.51] .XXX ±0.005 [±0.127] .XXXX ±0.0005 [±0.0127] REMOVE BURRS & BREAK SHARP EDGES: .003/.015 [.076/.381] X 45 ° CORNER FILLETS: R.02 [.51] MACHINED SURFACES: 200 5.1 mm SHOWN IN [BRACKETS]	DRAWN BY JJB		<div> Regal Beloit America, Inc.</div>					
ECO ECO-0138223		APPROVED BY CTO	DATE 04-19-2018		DATE 02-08-2012		DESCRIPTION END FRAME-MACHINED 440 FR. - 319 BRG. - D.E. - BAFFLE - RTD.					
ECO DESCRIPTION 440 FRAME STANDARDIZATION AND SIMPLIFICATION					APPROVED BY DJK							
COPYRIGHT REGAL BELOIT AMERICA, INC. ALL RIGHTS RESERVED. PROPRIETARY AND CONFIDENTIAL INFORMATION - THIS DOCUMENT IS THE PROPERTY OF REGAL BELOIT AMERICA, INC. ("OWNER") AND CONTAINS OWNER'S PROPRIETARY INFORMATION. ANY PERSON, CORPORATION OR OTHER FIRM RECEIVING IT IS DEEMED, BY RECEIVING IT, TO AGREE THAT IT, AND/OR ANY PART OF IT, SHALL NOT BE DISCLOSED TO ANY PERSON, CORPORATION OR OTHER ENTITY, DUPLICATED, AND/OR USED, EXCEPT AS EXPRESSLY APPROVED IN WRITING IN ADVANCE BY OWNER. THIS DOCUMENT SHALL BE RETURNED TO OWNER UPON REQUEST. IT MAY BE SUBJECT TO CERTAIN RESTRICTIONS UNDER APPLICABLE EXPORT CONTROL LAWS AND REGULATIONS.					DATE 02-08-2012		MATERIAL		PROCESS/FINISH			
					REFERENCE 516391 CSTG		SIZE B		DRAWING NUMBER 516391AZ		SHEET 1 OF 1	
					THIRD ANGLE PROJECTION							

4

3

2

1