

# PRODUCT INFORMATION PACKET



Model No: S9262-30  
Catalog No: S9262-30  
PLAIN WASHER 5/16

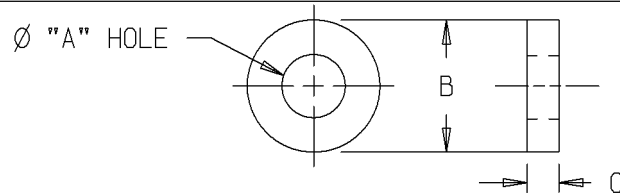
Regal and Marathon are trademarks of Regal Rexnord Corporation or one of its affiliated companies.  
©2025 Regal Rexnord Corporation, All Rights Reserved. MC017097E



## Nameplate Specifications

## Technical Specifications

This is an uncontrolled document once printed or downloaded and is subject to change without notice. Date Created:04/05/2025



S9262

ALL ADDITIONS, DELETIONS OR CHANGES  
MADE ON THIS DRAWING MUST ALSO BE  
MADE ON MI2800.

BUY PER TABLE

PART NO.	A	B	C	MAT'L.	PLATING	BUY	DIE NO.	NOTES
S9262-1	.531 $\pm .015$ -.005	1.000 $\pm .015$ -.007	.056/.071	STEEL	E1817	YES		
S9262-2	.41	.88	10 GA <sup>+</sup>	STEEL	<del>E1817</del>	YES		
S9262-3	.188 $\pm .008$ -.005	.375 $\pm .015$ -.005	.065/.036	STEEL	E1817	YES		
S9262-4	.385/.395	.817/.807	.031/.067	STEEL	E1817	YES		FLAT WITHIN .005 O.D. AND I.D. BURR FREE (WET TUMBLE)
S9262-5	.56	1.38	12 GA <sup>+</sup>	W. IRON	<del>E1817</del>	YES		
S9262-6	.47	2.00	.25	E1956-2	<del>E1817</del>	NO		
S9262-8	.282	.750	.064	BRASS	<del>E1817</del>	YES		
S9262-10	.88	1.38	16 GA <sup>+</sup>	STEEL	E1817	YES		
S9262-12	.463	.750	16 GA <sup>+</sup>	STEEL	E1817	YES		
S9262-14	.56	1.38	8 GA <sup>+</sup>	STEEL	E1817	YES		MINIMUM THICKNESS TO BE .156
S9262-16	.282	.625	.040	BRASS	<del>E1817</del>	YES		
S9262-18	.315	.81	.06	STEEL	E1817	NO		
S9262-19	.50	1.12	16 GA <sup>+</sup>	E684	<del>E1817</del>	NO		
S9262-21	.387/.392	1.62	8 GA <sup>+</sup>	STEEL	E1817	YES		
S9262-22	SUPERSEDED BY S9262-121							
S9262-23	.300/.280	.56	.043	STEEL	E1817	YES		
S9262-24	1.06	1.44	.12	STEEL	E1817	YES		TUMBLE TO REMOVE SHARP CORNERS
S9262-25	1.770/1.750	2.62	12 GA. <sup>+</sup> OR .12	E676, E684 E1585	<del>E1817</del>	NO	796 781	WASHERS TO BE FREE OF SCALE AND DIRT
S9262-26	.812 $\pm .030$ -.007	1.469 $\pm .030$ -.007	.160/.108	STEEL	<del>E1817</del>	YES		
S9262-27	.219 $\pm .008$ -.005	.500 $\pm .015$ -.005	.065/.036	STEEL	E1817	YES		
S9262-30	.338/.348	.692/.682	.081/.067	STEEL	E352	YES		FLAT WITHIN .005 O.D. AND I.D. BURR FREE (WET TUMBLE)
S9262-34	1.14	1.980/2.010	.19	STEEL	<del>E1817</del>	YES		
S9262-36	.651/.661	1.27	.090/.096	SEE NOTES	<del>E1817</del>	NO	1459 1527	12 GA. CRS PER E1585, USE STRIP 2.690/2.720 WIDE. HEAT TREAT BEFORE GRINDING CARBURIZE EFFECTIVE CASE .020-.030 HARDEN AND DRAW TO 73/81 R3DN. VENDOR TO APPLY RUST VETO OR EQUIVALENT.
S9262-37	.3165/.3135	.755/.745	.065/.060	SEE NOTES	<del>E1817</del>	YES		OIL INPREGNATED BRONZE
S9262-38	.5115/.5085	1.005/.995	.065/.060	SEE NOTES	<del>E1817</del>	YES		OIL INPREGNATED BRONZE
S9262-39	.128/.131	.317/.307	.040/.030	STEEL	E1817	YES		

FOR ADDITIONAL PART NUMBERS SEE S9262-A

					✓ UNLESS OTHERWISE SPECIFIED DIMENSIONS ARE IN INCHES TOL. ON XX± XXX±.005 XXXX±.0005 ANGLES±			
2	09-04-2001	REDRAWN IN ANVIL, REVISED SPEC FROM E1427 TO E1817/-1 CN 31129	BJW		MAX. SURFACE ROUGHNESS UNLESS OTHERWISE NOTED		DRAWN BY	BJW 07-24-2001
					FINISH		CHKD BY	DRS 09-04-2001
1	08-20-1999	CHANGE SHEET, 01-15-1999 C 07-30-1999 E, 08-20-1999 B			MATERIAL		APPD BY	HNH 09-04-2001
REV	DATE	CHANGE	NAME	PART NAME MISCELLANEOUS USE PLAIN WASHER				DRWG NO S9262
		PURCHASED		DISTRIBUTION WA - LB - WP - BY		CADD FILE NO.	S9262	

ERROR: syntaxerror  
OFFENDING COMMAND: --nostringval--

STACK:

/im  
-savelevel-