

PRODUCT INFORMATION PACKET



Model No: 511008A-8
Catalog No: 511008A-8
A-511008A-8 SLINGER MCH/1.750 SH DIA (Purchased)

Regal and Leeson are trademarks of Regal Rexnord Corporation or one of its affiliated companies.
©2025 Regal Rexnord Corporation, All Rights Reserved. MC017097E

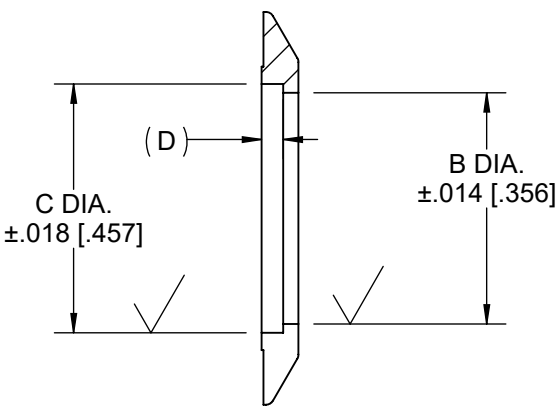
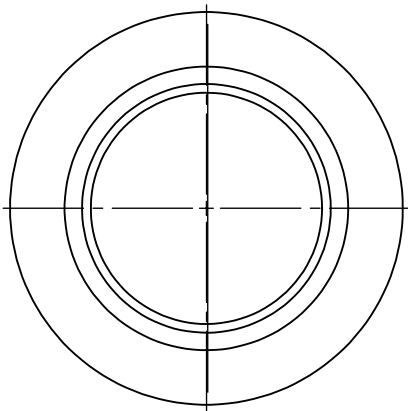



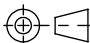


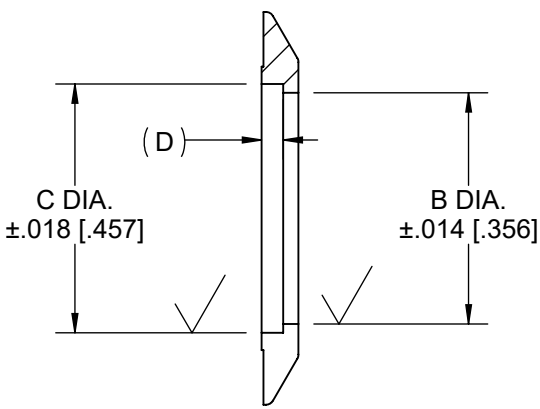
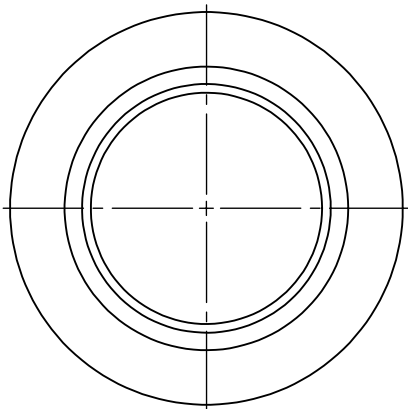
Nameplate Specifications


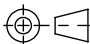
Technical Specifications

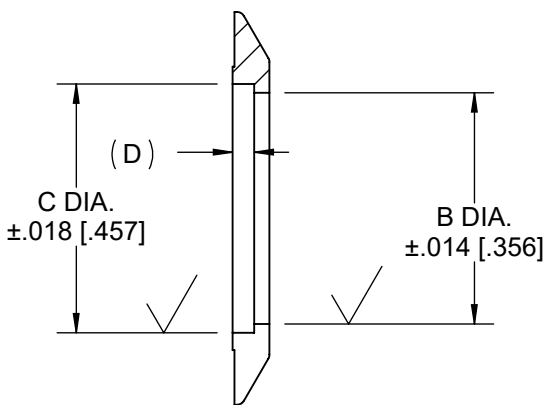
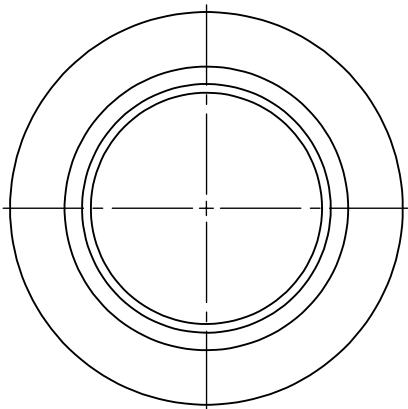
This is an uncontrolled document once printed or downloaded and is subject to change without notice. Date Created:04/05/2025




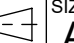
DASH NO.	MADE FROM SAME AS EXCEPT	B	C	D	REMARKS	ITEM REV.	DASH NO.	MADE FROM SAME AS EXCEPT	B	C	D	REMARKS	ITEM REV.
1	A-511008-14	2.312 [58.725]	---	---	440 FR. 2 POLE	5	8	A-511008-11 OR PURCHASED	1.687 [42.850]	---	---	280 FR. CORNELL	5
2	A-511008-11	---	2.203 [55.956]	.22 [5.59]	280TS	---	9	A-511008-16	2.937 [74.600]	---	---	SMITH & LOVELES	5
3	A-511008-12	---	2.203 [55.956]	.22 [5.59]	280TS	---	10	A-511008-14	2.288 [58.115]	---	---	320 FR. CORNELL	0
4	A-511008-14	---	2.781 [70.637]	.31 [7.87]	360U EXT. 3200758	5	11	A-511008-15	2.687 [68.250]	3.501 [88.925]	---	STA-RITE	A
5	A-511008-13	1.906 [48.412]	---	---	250 FR. CORNELL	0	12	A-511008-15	---	3.406 [86.512]	.31 [7.87]	449 FR. 4,6 POLE	5
6	A-511008-14	2.437 [61.900]	---	---	320 FR. CORNELL	5	13	A-511008-15	2.562 [65.075]	3.406 [86.512]	---	---	5
7	A-511008-15	2.437 [61.900]	---	---	280 FR. 217 BRG CORNELL	5	14	A-511008-14 OR PURCHASED	2.110 [53.594]	---	---	2.166 SHAFT	5
DRAWING REVISION J		REVISION BY SAS		REV DATE/© DATE 12/2/2022		TOLERANCES (EXCEPT AS NOTED): DEC. INCH mm ANGLE .X ±0.1 [±3] ±0.5° .XX ±0.01 [±0.3] .XXX ±0.005 [±0.13] .XXXX ±0.0005 [±0.013] REMOVE BURRS & BREAK SHARP EDGES: .003/.015 [.08/.38] X 45° CORNER FILLETS: R.02 [.5] MACHINED SURFACES: 125/ 3.2/ INCH mm mm DIMENSIONS IN [BRACKETS] ARE FOR REFERENCE ONLY		DRAWN BY KL		 Regal Beloit America, Inc.			
REQUEST NUMBER CR-0012696		APPROVED BY SC		DATE 12/2/2022				DATE 12-28-1998					
REQUEST NUMBER DESCRIPTION ADDED DASH 32+UPDATED DASH 12								APPROVED BY DJK		DESCRIPTION SLINGER 250 - 440 FRAME - MACHINED			
COPYRIGHT (PER REVISION DATE) REGAL BELOIT AMERICA, INC. ALL RIGHTS RESERVED. PROPRIETARY AND CONFIDENTIAL INFORMATION - THIS DOCUMENT IS THE PROPERTY OF REGAL BELOIT AMERICA, INC. ("OWNER") AND CONTAINS OWNER'S PROPRIETARY INFORMATION. ANY PERSON, CORPORATION OR OTHER FIRM RECEIVING IT IS DEEMED, BY RECEIVING IT, TO AGREE THAT IT, AND/OR ANY PART OF IT, SHALL NOT BE DISCLOSED TO ANY PERSON, CORPORATION OR OTHER ENTITY, DUPLICATED, AND/OR USED, EXCEPT AS EXPRESSLY APPROVED IN WRITING IN ADVANCE BY OWNER. THIS DOCUMENT SHALL BE RETURNED TO OWNER UPON REQUEST. IT MAY BE SUBJECT TO CERTAIN RESTRICTIONS UNDER APPLICABLE EXPORT CONTROL LAWS AND REGULATIONS.								DATE 12-28-1998					
								REFERENCE		MATERIAL		PROCESS/FINISH	
						THIRD ANGLE PROJECTION 		SIZE A	DRAWING NUMBER 511008A			SHEET 1 OF 3	



DASH NO.	MADE FROM SAME AS EXCEPT	B	C	D	REMARKS	ITEM REV.	DASH NO.	MADE FROM SAME AS EXCEPT	B	C	D	REMARKS	ITEM REV.
15	A-511008-16	---	3.501 [88.925]	---	440U FR.	---	06-10-2008 22	A-511008-11	---	2.500 [63.500]	---		5
16	A-511008-16	3.137 [79.680]	---	---	449 TZ FR.	3	07-17-2008 23	A-511008-14	2.187 [55.550]	---	---	AZURE	---
17	A-511008-16	3.037 [77.140]	---	---	IEC 280M FR.	3	02-11-2009 24	A-511008-14	---	3.156 [80.162]	---	ARORA	3
18	A-511008-13	1.906 [48.415]	2.625 [66.675]	---	CORNELL A495	5	08-19-2011 25	A-511008-14	2.187 [55.550]	2.625 [66.675]	.35 [8.89]		0
19	A-511008-16	3.562 [90.475]	3.850 [97.790]	---	449 TZ FR.	3	10-23-2014 26	A-511008-15	2.574 [64.380]	---	---	360TZ FR	B
20	A-511008-16	2.937 [74.600]	---	---	CORNELL (3")	3	11-19-2014 27	A-511008-14	---	3.406 [86.512]	---	440US EXT	A
21	A-511008-14	2.437 [61.900]	3.501 [88.925]	.25 [6.35]		3	05-03-2016 28	A-511008-15	2.373 [60.274]	---	---	SPL MAGNETEK EXT.	A
DRAWING REVISION J		REVISION BY SAS		REV DATE/© DATE 12/2/2022		TOLERANCES (EXCEPT AS NOTED): DEC. INCH mm ANGLE .X ±0.1 [+3] ±0.5° .XX ±0.01 [+0.3] .XXX ±0.005 [+0.13] .XXXX ±0.0005 [+0.013] REMOVE BURRS & BREAK SHARP EDGES: .003/.015 [.08/.38] X 45° CORNER FILLETS: R.02 [.5] MACHINED SURFACES: 125/ 3.2/ INCH mm mm DIMENSIONS IN [BRACKETS] ARE FOR REFERENCE ONLY		DRAWN BY KL		 Regal Beloit America, Inc.			
REQUEST NUMBER CR-0012696		APPROVED BY SC		DATE 12/2/2022				DATE 12-28-1998					
REQUEST NUMBER DESCRIPTION ADDED DASH 32+UPDATED DASH 12								APPROVED BY DJK		DESCRIPTION SLINGER 250 - 440 FRAME - MACHINED			
COPYRIGHT (PER REVISION DATE) REGAL BELOIT AMERICA, INC. ALL RIGHTS RESERVED. PROPRIETARY AND CONFIDENTIAL INFORMATION - THIS DOCUMENT IS THE PROPERTY OF REGAL BELOIT AMERICA, INC. ("OWNER") AND CONTAINS OWNER'S PROPRIETARY INFORMATION. ANY PERSON, CORPORATION OR OTHER FIRM RECEIVING IT IS DEEMED, BY RECEIVING IT, TO AGREE THAT IT, AND/OR ANY PART OF IT, SHALL NOT BE DISCLOSED TO ANY PERSON, CORPORATION OR OTHER ENTITY, DUPLICATED, AND/OR USED, EXCEPT AS EXPRESSLY APPROVED IN WRITING IN ADVANCE BY OWNER. THIS DOCUMENT SHALL BE RETURNED TO OWNER UPON REQUEST. IT MAY BE SUBJECT TO CERTAIN RESTRICTIONS UNDER APPLICABLE EXPORT CONTROL LAWS AND REGULATIONS.								DATE 12-28-1998					
								REFERENCE		MATERIAL		PROCESS/FINISH	
								THIRD ANGLE PROJECTION 		SIZE A		DRAWING NUMBER 511008A	



DASH NO.	MADE FROM SAME AS EXCEPT	B	C	D	REMARKS	ITEM REV.	DASH NO.	MADE FROM SAME AS EXCEPT	B	C	D	REMARKS	ITEM REV.
12-22-2016 -29	A-511008-17	3.812 [96.825]	4.500 [114.300]	---	449TZ FR.	B							
30	A-511008-17	---	3.850 [97.79]	---	440T FR.	A							
31	A-511008-13	1.950 [49.53]	2.625 [66.675]	---	360TZ FR.								
32	A-511008-15	---	3.600 [91.44]	---	440TSZ	A							

DRAWING REVISION J	REVISION BY SAS	REV DATE/© DATE 12/2/2022	TOLERANCES (EXCEPT AS NOTED): DEC. INCH mm ANGLE .X ±0.1 [±3] ±0.5° .XX ±0.01 [±0.3] .XXX ±0.005 [±0.13] .XXXX ±0.0005 [±0.013] REMOVE BURRS & BREAK SHARP EDGES: .003/.015 [.08/.38] X 45° CORNER FILLETS: R.02 [.5] MACHINED SURFACES: 125/ 3.2/ INCH mm mm DIMENSIONS IN [BRACKETS] ARE FOR REFERENCE ONLY	DRAWN BY KL	 Regal Beloit America, Inc.			
REQUEST NUMBER CR-0012696	APPROVED BY SC	DATE 12/2/2022		DATE 12-28-1998				
REQUEST NUMBER DESCRIPTION ADDED DASH 32+UPDATED DASH 12				APPROVED BY DJK	DESCRIPTION SLINGER 250 - 440 FRAME - MACHINED			
COPYRIGHT (PER REVISION DATE) REGAL BELOIT AMERICA, INC. ALL RIGHTS RESERVED. PROPRIETARY AND CONFIDENTIAL INFORMATION - THIS DOCUMENT IS THE PROPERTY OF REGAL BELOIT AMERICA, INC. ("OWNER") AND CONTAINS OWNER'S PROPRIETARY INFORMATION. ANY PERSON, CORPORATION OR OTHER FIRM RECEIVING IT IS DEEMED, BY RECEIVING IT, TO AGREE THAT IT, AND/OR ANY PART OF IT, SHALL NOT BE DISCLOSED TO ANY PERSON, CORPORATION OR OTHER ENTITY, DUPLICATED, AND/OR USED, EXCEPT AS EXPRESSLY APPROVED IN WRITING IN ADVANCE BY OWNER. THIS DOCUMENT SHALL BE RETURNED TO OWNER UPON REQUEST. IT MAY BE SUBJECT TO CERTAIN RESTRICTIONS UNDER APPLICABLE EXPORT CONTROL LAWS AND REGULATIONS.				DATE 12-28-1998				
				REFERENCE	MATERIAL		PROCESS/FINISH	
				THIRD ANGLE PROJECTION 	SIZE A	DRAWING NUMBER 511008A		SHEET 3 OF 3