

PRODUCT INFORMATION PACKET



Model No: 277-0004-001
Catalog No: 277-0004-001
277-0004 BRACKET PMACHINING#309 BRG(FORSHEDA)

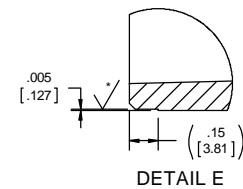
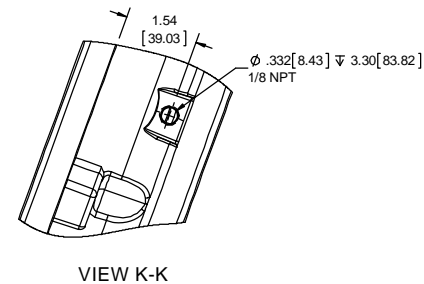
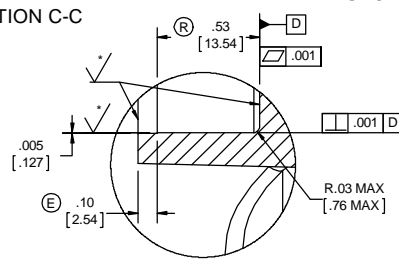
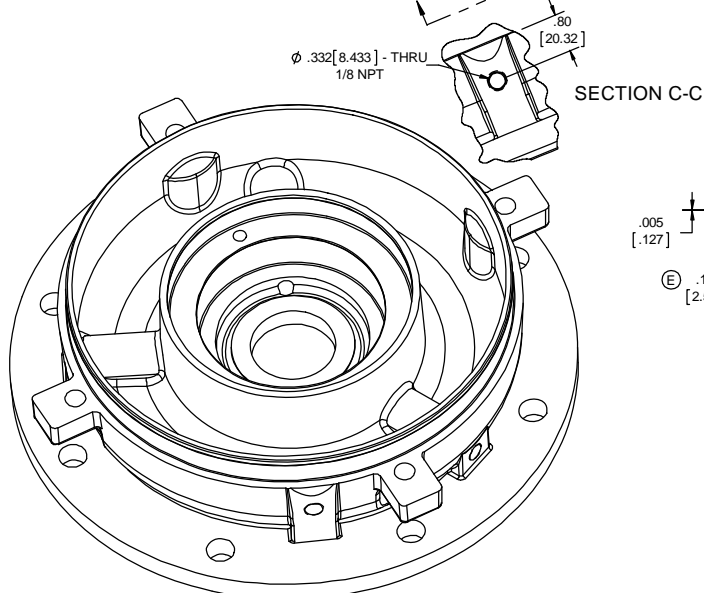
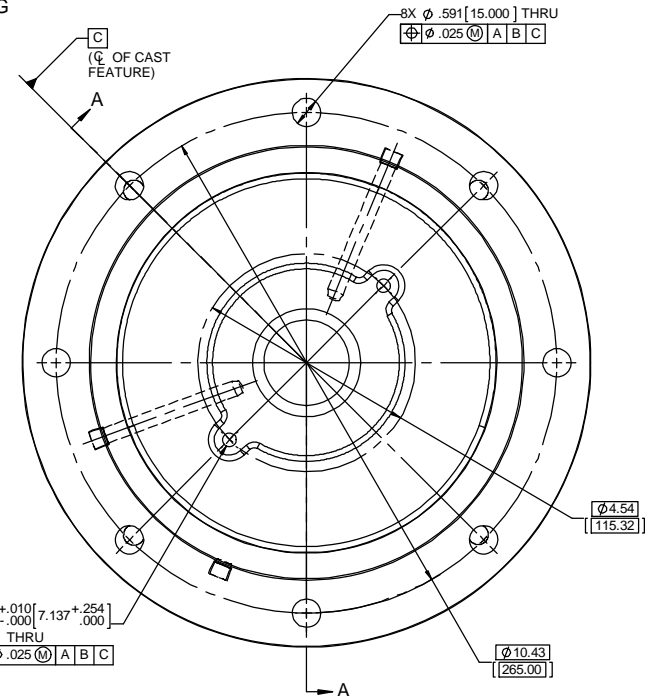
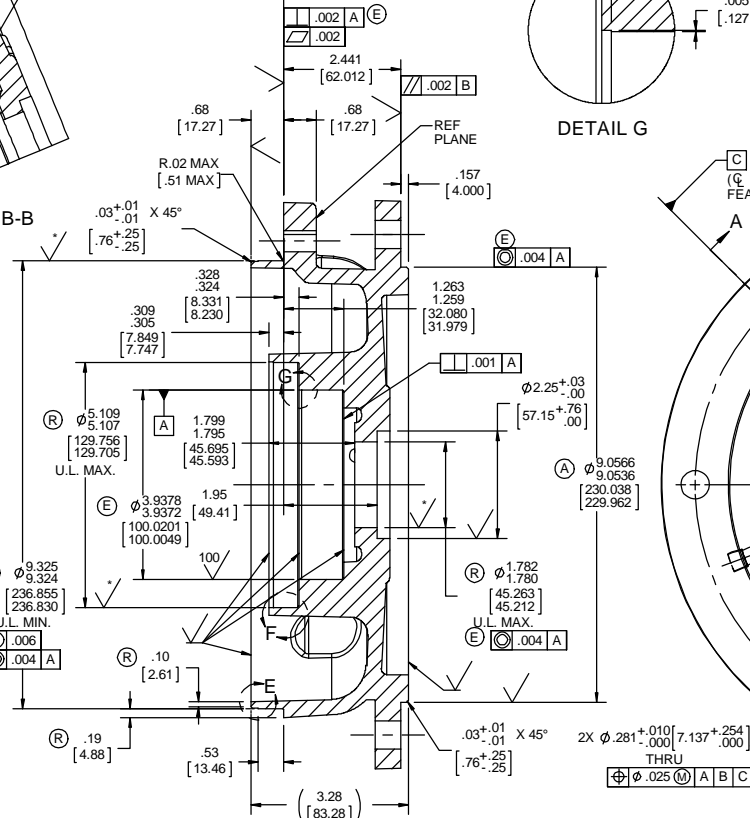
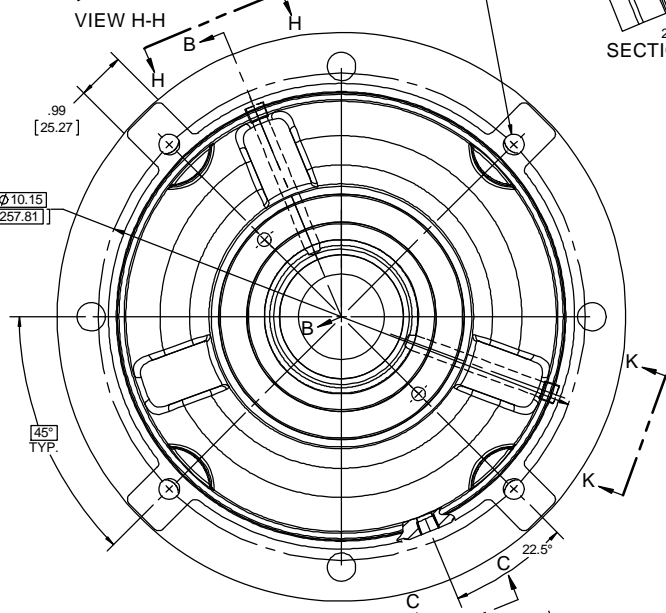
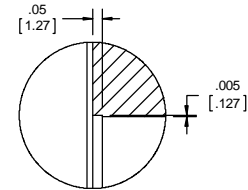
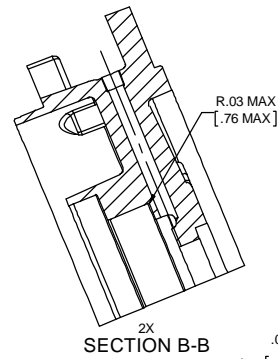
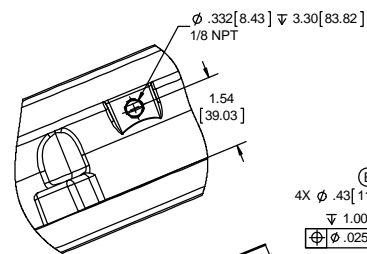
Regal and Marathon are trademarks of Regal Rexnord Corporation or one of its affiliated companies.
©2025 Regal Rexnord Corporation, All Rights Reserved. MC017097E






Nameplate Specifications

Technical Specifications

This is an uncontrolled document once printed or downloaded and is subject to change without notice. Date Created:04/05/2025



- NOTES:
1. PART MUST BE SCRAPPED IF SURFACE DEFECTS ARE PRESENT ON MACHINED SURFACES NOTED BY  PER SMI 2.3.15 OR IF PART DOES NOT MEET U.L. MIN. (R)
2. FOR ENGINEERING USE:
APPROVED FOR CLASS 1 GROUP C AND D EXPLOSION PROOF
APPROVED FOR CLASS II GROUP F AND G EXPLOSION PROOF

CTOQS PROCESS ENGINEERING APPLICATION REGULATORY		DRAWING REVISION C ECO-0146336 ECO DESCRIPTION GREASE FITTING HOLD HIDDEN SHOWN COPYRIGHT REGAL BELLOIT AMERICA, INC. ALL RIGHTS RESERVED. PROPRIETARY AND CONFIDENTIAL INFORMATION. THIS DOCUMENT IS THE PROPERTY OF REGAL BELLOIT AMERICA, INC. (OWNER) AND CONTAINS OWNER'S PROPRIETARY INFORMATION. ANY PERSON, CORPORATION OR OTHER ENTITY REPRODUCING OR USING IN ANY MANNER THIS DOCUMENT WITHOUT THE WRITTEN PERMISSION OF REGAL BELLOIT AMERICA, INC. IS PROHIBITED. BY RECEIVING IT, TO AGREE THAT IT, AND ANY PART OF IT, SHALL NOT BE DISCLOSED TO ANY PERSON, CORPORATION OR OTHER ENTITY, DUPLICATED, COPIED, LOANED, EXCEPT AS EXPRESSLY APPROVED IN WRITING IN ADVANCE BY OWNER. THIS DOCUMENT SHALL BE RETURNED TO THE SUPPLIER UPON REQUEST. IT MAY BE SUBJECT TO EXPORT CONTROLS, RESTRICTIONS UNDER APPLICABLE EXPORT CONTROL, LAWS AND REGULATIONS.		REVISION BY NK APPROVED BY SR DATE 06/05/2018 DATE 06/05/2018		TOLERANCES UNLESS OTHERWISE SPECIFIED: DEC. INCH mm ANGLE .XX .0005 [0.0127] .X .001 [0.025] XXXX .0005 [0.0127] REMOVE BURRS & CHAMF EDGES: .0031.015 [0.076.381] CORNER FILLETS: .02 [51] MACHINED SURFACES: .125/32 mm SHOWN IN [BRACKETS]		DRAWN BY RAF DATE 2/4/2014 APPROVED BY DATE PROCESS/FINISH 3/2 THIRD ANGLE PROJECTION 		 Regal Beloit America, Inc. END FRAME-MACHINED B35 #6309 BRG FORSHEDA MATERIAL CAST IRON SIZE C DRAWING NUMBER 277-0004		SHEET 1 OF 1	
--	--	--	--	--	--	--	--	--	--	--	--	-----------------	--