

# PRODUCT INFORMATION PACKET



Model No: 201036DM-Y  
Catalog No: 201036DM-Y  
B-201036DM-Y C BOX BASE/(2)2"NPT & (1)3/4"NPT

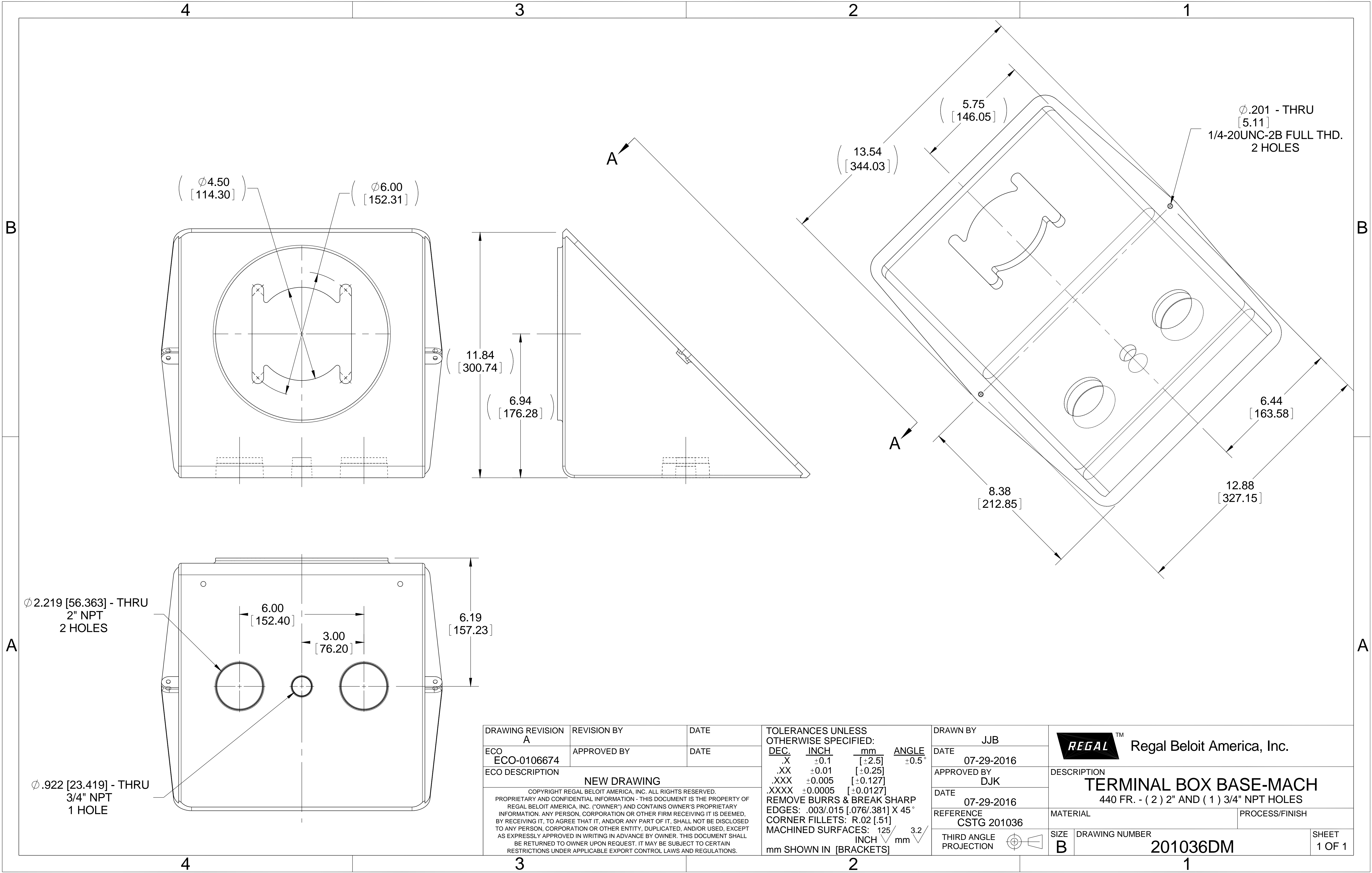
Regal and Marathon are trademarks of Regal Rexnord Corporation or one of its affiliated companies.  
©2025 Regal Rexnord Corporation, All Rights Reserved. MC017097E



## Nameplate Specifications

## Technical Specifications

This is an uncontrolled document once printed or downloaded and is subject to change without notice. Date Created:04/05/2025



DRAWING REVISION A	REVISION BY	DATE	TOLERANCES UNLESS OTHERWISE SPECIFIED: DEC. INCH mm ANGLE .X ±0.1 [±2.5] ±0.5° .XX ±0.01 [±0.25] .XXX ±0.005 [±0.127] .XXXX ±0.0005 [±0.0127] REMOVE BURRS & BREAK SHARP EDGES: .003/.015 [0.076/.381] X 45° CORNER FILLETS: R.02 [.51] MACHINED SURFACES: 125 INCH 3.2 mm mm SHOWN IN [BRACKETS]		DRAWN BY JJB	<div><div>REGAL<sup>TM</sup></div><div>Regal Beloit America, Inc.</div></div>			
ECO ECO-0106674	APPROVED BY	DATE			DATE 07-29-2016				
ECO DESCRIPTION NEW DRAWING					APPROVED BY DJK	DESCRIPTION TERMINAL BOX BASE-MACH 440 FR. - ( 2 ) 2" AND ( 1 ) 3/4" NPT HOLES			
COPYRIGHT REGAL BELOIT AMERICA, INC. ALL RIGHTS RESERVED. PROPRIETARY AND CONFIDENTIAL INFORMATION - THIS DOCUMENT IS THE PROPERTY OF REGAL BELOIT AMERICA, INC. ("OWNER") AND CONTAINS OWNER'S PROPRIETARY INFORMATION. ANY PERSON, CORPORATION OR OTHER FIRM RECEIVING IT IS DEEMED, BY RECEIVING IT, TO AGREE THAT IT, AND/OR ANY PART OF IT, SHALL NOT BE DISCLOSED TO ANY PERSON, CORPORATION OR OTHER ENTITY, DUPLICATED, AND/OR USED, EXCEPT AS EXPRESSLY APPROVED IN WRITING IN ADVANCE BY OWNER. THIS DOCUMENT SHALL BE RETURNED TO OWNER UPON REQUEST. IT MAY BE SUBJECT TO CERTAIN RESTRICTIONS UNDER APPLICABLE EXPORT CONTROL LAWS AND REGULATIONS.					DATE 07-29-2016				
			REFERENCE CSTG 201036		MATERIAL		PROCESS/FINISH		
			THIRD ANGLE PROJECTION		SIZE B		DRAWING NUMBER 201036DM		SHEET 1 OF 1