

# PRODUCT INFORMATION PACKET

**marathon®**  
Motors

Model No: M8776-62  
Catalog No: M8776-62  
KEY,E1956-1 .500SQX2.75

Regal and Marathon are trademarks of Regal Rexnord Corporation or one of its affiliated companies.  
©2025 Regal Rexnord Corporation, All Rights Reserved. MC017097E

The logo for Regal Rexnord, featuring a stylized 'R' icon followed by the text 'RegalRexnord'.

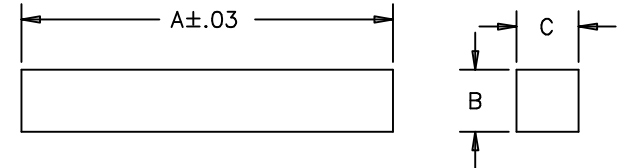
## Nameplate Specifications

## Technical Specifications

This is an uncontrolled document once printed or downloaded and is subject to change without notice. Date Created:04/05/2025

M8776-79	3.00	.625	.625	N.D.	M8776-113	6.38	.3125	.3125	N.D.	M8776-146	8.25	.250	.250	N.E.
M8776-78	6.88	.875	.875	N.D.	M8776-112	4.75	.3125	.3125	N.E.	M8776-145	8.12	.500	.500	N.E.
M8776-77	4.25	.625	.625	N.D.	M8776-111	4.00	.3125	.3125	N.D.	M8776-144	11.62	.875	.875	N.D.
M8776-76	2.25	.375	.375	N.D.	M8776-110	1.63	.3125	.3125	N.E.	M8776-143	2.75	10MM	10MM	N.D.
M8776-75	3.88	.500	.500	N.D.	M8776-109	6.50	.250	.250	N.E.	M8776-142	8.88	.875	.875	N.E.
M8776-74	5.62	.750	.750	N.D.	M8776-108	2.88	.250	.250	N.E.	M8776-141	2.88	12MM	12MM	N.D.
M8776-73	1.88	.625	.625	N.D.	M8776-107	4.38	.1875	.1875	N.D.	M8776-140	4.20	.3125	.3125	N.D.
M8776-71	2.38	.3125	.3125	N.D.	M8776-106	3.25	.1875	.1875	N.E.	M8776-139	2.75	.250	.250	N.D.
M8776-67	1.50	.250	.250	N.D.	M8776-105	3.15	.1875	.1875	N.E.	M8776-138	4.88	.3125	.625	N.E.
M8776-66	1.88	.1875	.1875	N.D.	M8776-104	2.00	.1875	.1875	N.D.	M8776-137	2.88	.3125	.625	N.E.
M8776-65	7.00	.750	.750	N.D.	M8776-103	1.75	.1875	.1875	N.D.	M8776-136	4.28	.250	.500	N.E.
M8776-64	5.00	.500	.500	N.D.	M8776-102	3.00	.125	.125	N.D.	M8776-135	2.00	.125	.250	N.E.
M8776-63	5.50	.625	.625	N.D.	M8776-101	5.62	.625	.625	N.D.	M8776-134	8.50	.750	.750	N.D.
M8776-62	2.75	.500	.500	N.D.	M8776-100	6.12	.375	.375	N.D.	M8776-133	7.00	.625	.625	N.E.
M8776-60	2.00	.500	.500	N.D.	M8776-99	2.38	.250	.250	N.D.	M8776-132	4.88	.625	.625	N.E.
M8776-59	2.00	.250	.250	N.D.	M8776-98	6.88	.625	.625	N.D.	M8776-131	3.88	.625	.625	N.E.
M8776-44	4.25	.500	.500	N.D.	M8776-97	5.88	.375	.375	N.D.	M8776-130	2.88	.625	.625	N.D.
M8776-48	4.00	.500	.500	N.D.	M8776-96	11.88	.875	.875	N.D.	M8776-129	8.88	.500	.500	N.D.
M8776-45	2.50	.500	.500	N.D.	M8776-95	1.12	.375	.375	N.D.	M8776-128	7.88	.500	.500	N.D.
M8776-40	2.50	.375	.375	N.D.	M8776-94	.62	.1875	.1875	N.D.	M8776-127	7.25	.500	.500	N.E.
M8776-37	1.00	.375	.375	N.D.	M8776-93	.63	.3125	.3125	N.D.	M8776-126	6.63	.500	.500	N.E.
M8776-35	.31	.3125	.3125	N.D.	M8776-92	.50	.125	.125	N.D.	M8776-125	6.38	.500	.500	N.E.
M8776-31	.75	.1875	.1875	N.A.,N.D.	M8776-91	2.50	.250	.250	N.D.	M8776-124	6.25	.500	.500	N.E.
M8776-29	.75	.375	.375	N.D.	M8776-90	1.62	.1875	.1875	N.D.	M8776-123	6.12	.500	.500	N.E.
M8776-24	3.75	.375	.375	N.D.	M8776-89	.62	.0938	.0938	N.D.	M8776-122	5.75	.500	.500	N.E.
M8776-22	3.25	.375	.375	N.D.	M8776-88	1.68	.500	.500	N.D.	M8776-121	5.50	.500	.500	N.D.
M8776-17	2.38	.375	.375	N.D.	M8776-87	1.31	.500	.500	N.D.	M8776-120	4.88	.500	.500	N.E.
M8776-15	1.88	.375	.375	N.D.	M8776-85	1.25	.375	.375	N.D.	M8776-119	2.31	.500	.500	N.E.
M8776-14	1.50	.375	.375	N.D.	M8776-84	1.06	.125	.125	N.D.	M8776-118	6.88	.375	.375	N.D.
M8776-8	2.75	.3125	.3125	N.D.	M8776-83	1.62	.124 .120	.124 .120	N.A.,N.C.,N.D.	M8776-117	4.00	.375	.375	N.E.
M8776-6	.88	.1875	.1875	N.D.	M8776-82	.44	.1875	.1875	N.D.	M8776-116	3.88	.375	.375	N.E.
M8776-5	.50	.1875	.1875	N.D.	M8776-81	1.75	.250	.250	N.D.	M8776-115	2.13	.375	.375	N.E.
M8776-3	1.38	.1875	.1875	N.D.	M8776-80	3.25	.500	.500	N.D.	M8776-114	3.38	.3125	.3125	N.D.
PART NO.	A	B	C	NOTES	PART NO.	A	B	C	NOTES	PART NO.	A	B	C	NOTES


M8776



MATERIAL: STEEL PER C-203 UNLESS OTHERWISE SPECIFIED IN NOTES.  
TOLERANCES ON "B" AND "C" DIMENSIONS  
±.000/-0.002 UP TO .750  
±.000/-0.003 .750 AND UP

#### NOTES:

- N.A. BREAK CORNERS ON EACH SQUARE END OR ALTERNATE VENDOR MAY FURNISH 45° ROUNDED CHAMFER AT BOTH ENDS.
- N.B. PLATED PER E352. ALL DIMENSIONS PRIOR TO PLATING.
- N.C. MATERIAL TO BE BRONZE WITH 15,000 PSI MIN. SHEAR STRENGTH.
- N.D. BUY.
- N.E. MAKE.

						TOLERANCES UNLESS SPECIFIED	REGAL-BELOIT 			DRAWN CTO 11-09-2000									
						DEC.				INCHES	CHK	BLR 01-15-2001							
						.X	±.1			APPD	MAL 01-15-2001								
3	UPDATED MATERIAL NOTE TO C-203 CN 35052		DRS 05-06-2002	ML	.XX	±.02	TITLE MISC.			SCALE 1=1									
2	REDRAWN TO ANVIL & ADDED NOTE CN 30407		CTO 01-17-2001		.XXX	±.005	KEYS			REF									
1	10-1-99MB				.XXXX	±.0005	MAT'L			FMF									
NO.	REVISION			BY & DATE		CHK	ANG	±7°30"	FINISH			PREV							
THIS DRAWING IN DESIGN AND DETAIL IS OUR PROPERTY AND MUST NOT BE USED EXCEPT IN CONNECTION WITH OUR WORK. ALL RIGHTS OF DESIGN AND INVENTION ARE RESERVED. THIS IS AN ELECTRONICALLY GENERATED DOCUMENT - DO NOT SCALE THIS PRINT.												RFP	CAD FILE M8776		SIZE	DRAWING NO.	PAGE	OF	REV.
													DIST WA-LB-WP-BY-PR		B	M8776			3

ERROR: syntaxerror  
OFFENDING COMMAND: --nostringval--

STACK:

/CB  
-dictionary-  
/Pscript\_WinNT\_Compat  
-dictionary-