

PRODUCT INFORMATION PACKET



Model No: A-400N-200CF
Catalog No: A-400N-200CF
B-400N-200CF EXC STR ASY# -VPI -SCR -POLYB

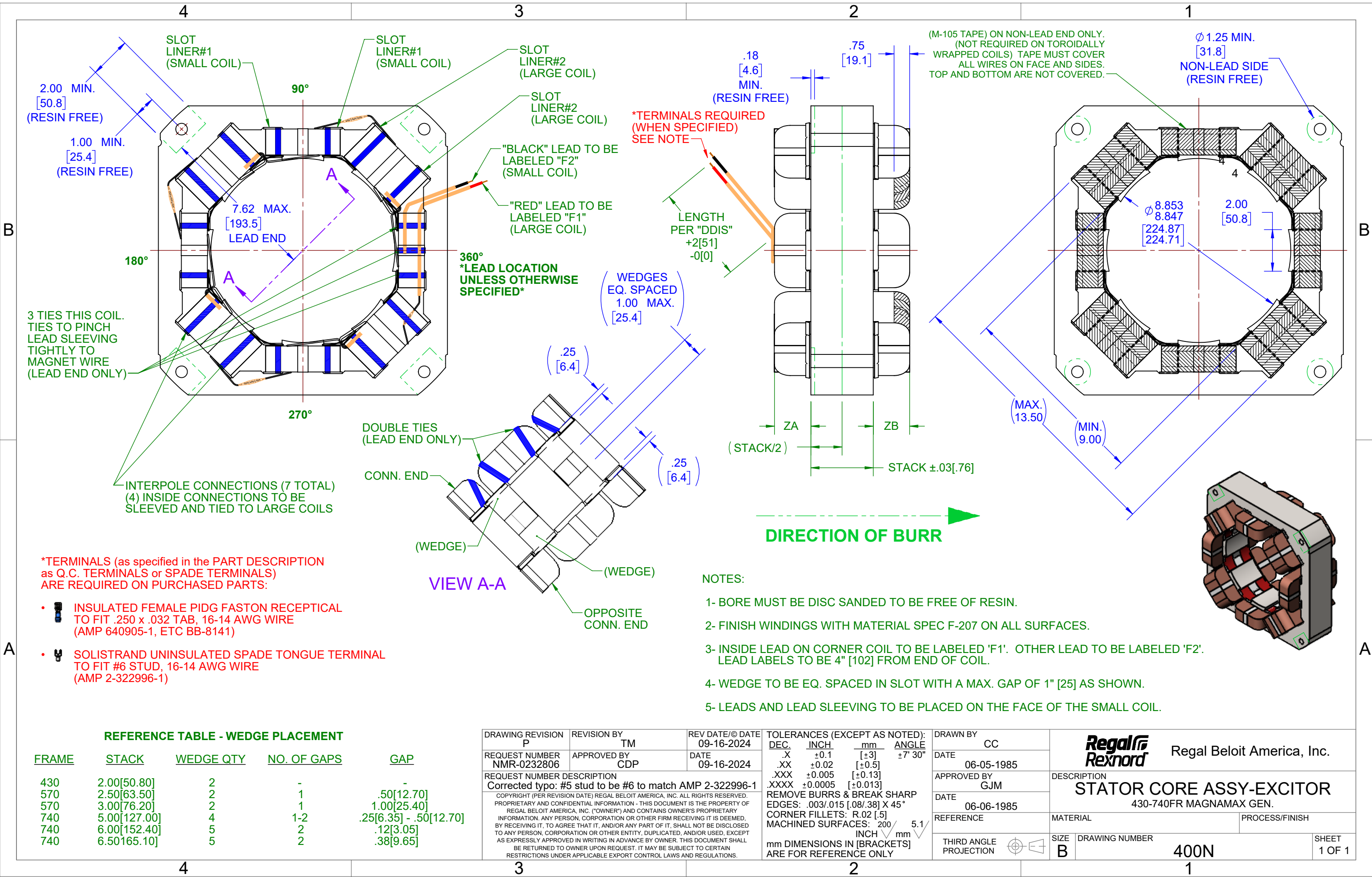
Regal and Marathon are trademarks of Regal Rexnord Corporation or one of its affiliated companies.
©2025 Regal Rexnord Corporation, All Rights Reserved. MC017097E



Nameplate Specifications

Technical Specifications

This is an uncontrolled document once printed or downloaded and is subject to change without notice. Date Created:04/05/2025



- *TERMINALS (as specified in the PART DESCRIPTION as Q.C. TERMINALS or SPADE TERMINALS) ARE REQUIRED ON PURCHASED PARTS:
- INSULATED FEMALE PIDG FASTON RECEPTICAL TO FIT .250 x .032 TAB, 16-14 AWG WIRE (AMP 640905-1, ETC BB-8141)
 - SOLISTRAND UNINSULATED SPADE TONGUE TERMINAL TO FIT #6 STUD, 16-14 AWG WIRE (AMP 2-322996-1)

REFERENCE TABLE - WEDGE PLACEMENT

FRAME	STACK	WEDGE QTY	NO. OF GAPS	GAP
430	2.00[50.80]	2	-	-
570	2.50[63.50]	2	1	.50[12.70]
570	3.00[76.20]	2	1	1.00[25.40]
740	5.00[127.00]	4	1-2	.25[6.35] - .50[12.70]
740	6.00[152.40]	5	2	.12[3.05]
740	6.50[165.10]	5	2	.38[9.65]

DRAWING REVISION P	REVISION BY TM	REV DATE/© DATE 09-16-2024
REQUEST NUMBER NMR-0232806	APPROVED BY CDP	DATE 09-16-2024
REQUEST NUMBER DESCRIPTION Corrected typo: #5 stud to be #6 to match AMP 2-322996-1		
COPYRIGHT (PER REVISION DATE) REGAL BELOIT AMERICA, INC. ALL RIGHTS RESERVED. PROPRIETARY AND CONFIDENTIAL INFORMATION - THIS DOCUMENT IS THE PROPERTY OF REGAL BELOIT AMERICA, INC. ("OWNER") AND CONTAINS OWNER'S PROPRIETARY INFORMATION. ANY PERSON, CORPORATION OR OTHER FIRM RECEIVING IT IS DEEMED, BY RECEIVING IT, TO AGREE THAT IT, AND/OR ANY PART OF IT, SHALL NOT BE DISCLOSED TO ANY PERSON, CORPORATION OR OTHER ENTITY, DUPLICATED, AND/OR USED, EXCEPT AS EXPRESSLY APPROVED IN WRITING IN ADVANCE BY OWNER. THIS DOCUMENT SHALL BE RETURNED TO OWNER UPON REQUEST. IT MAY BE SUBJECT TO CERTAIN RESTRICTIONS UNDER APPLICABLE EXPORT CONTROL LAWS AND REGULATIONS.		

TOLERANCES (EXCEPT AS NOTED):			
DEC.	INCH	mm	ANGLE
.X	±0.1	[±3]	±7° 30"
.XX	±0.02	[±0.5]	
.XXX	±0.005	[±0.13]	
.XXXX	±0.0005	[±0.013]	
REMOVE BURRS & BREAK SHARP EDGES: .003/.015 [0.08/.38] X 45°			
CORNER FILLETS: R.02 [.5]			
MACHINED SURFACES: 200			
INCH/mm			
mm DIMENSIONS IN [BRACKETS] ARE FOR REFERENCE ONLY			

DRAWN BY CC	DATE 06-05-1985
APPROVED BY GJM	DATE 06-06-1985
REFERENCE	
THIRD ANGLE PROJECTION	

Regal Rexnord		Regal Beloit America, Inc.	
DESCRIPTION		STATOR CORE ASSY-EXCITOR	
430-740FR MAGNAMAX GEN.			
MATERIAL		PROCESS/FINISH	
SIZE B	DRAWING NUMBER 400N	SHEET 1 OF 1	