

PRODUCT INFORMATION PACKET



Model No: 3A253-2
Catalog No: 3A253-2
GROUND LUG

Regal and Marathon are trademarks of Regal Rexnord Corporation or one of its affiliated companies.
©2025 Regal Rexnord Corporation, All Rights Reserved. MC017097E



Nameplate Specifications

Technical Specifications

This is an uncontrolled document once printed or downloaded and is subject to change without notice. Date Created:04/05/2025

BURNDY
TYPE KA
KA-LUG[®]
FOR COPPER CABLE

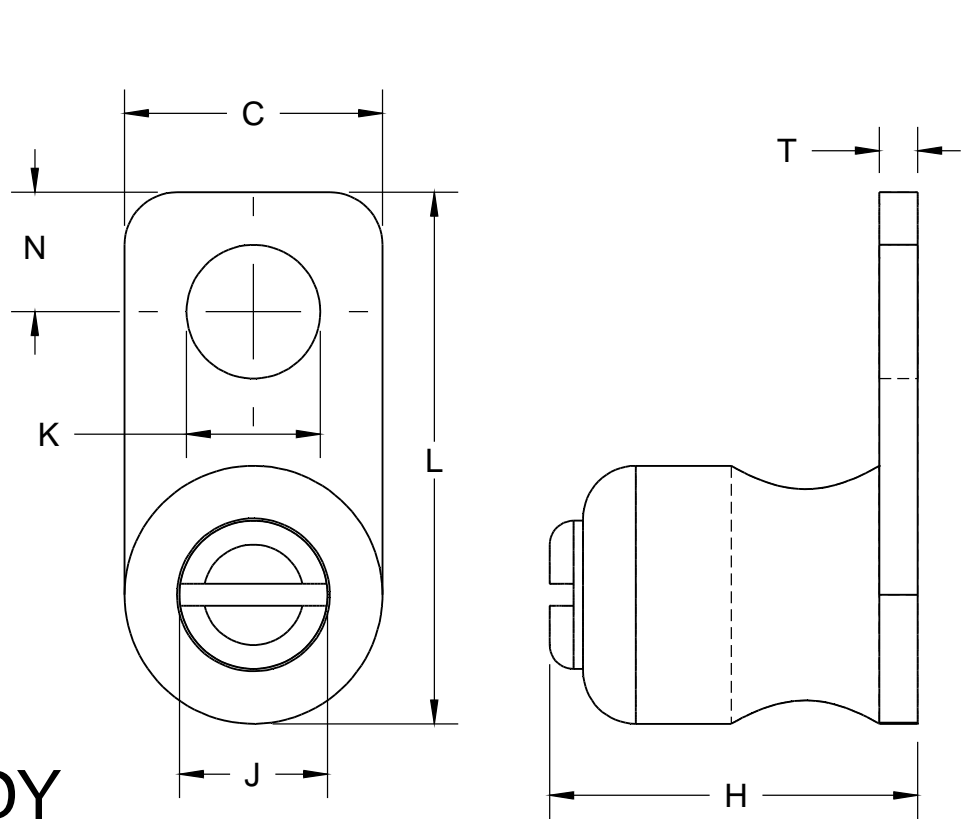


FIG 1.

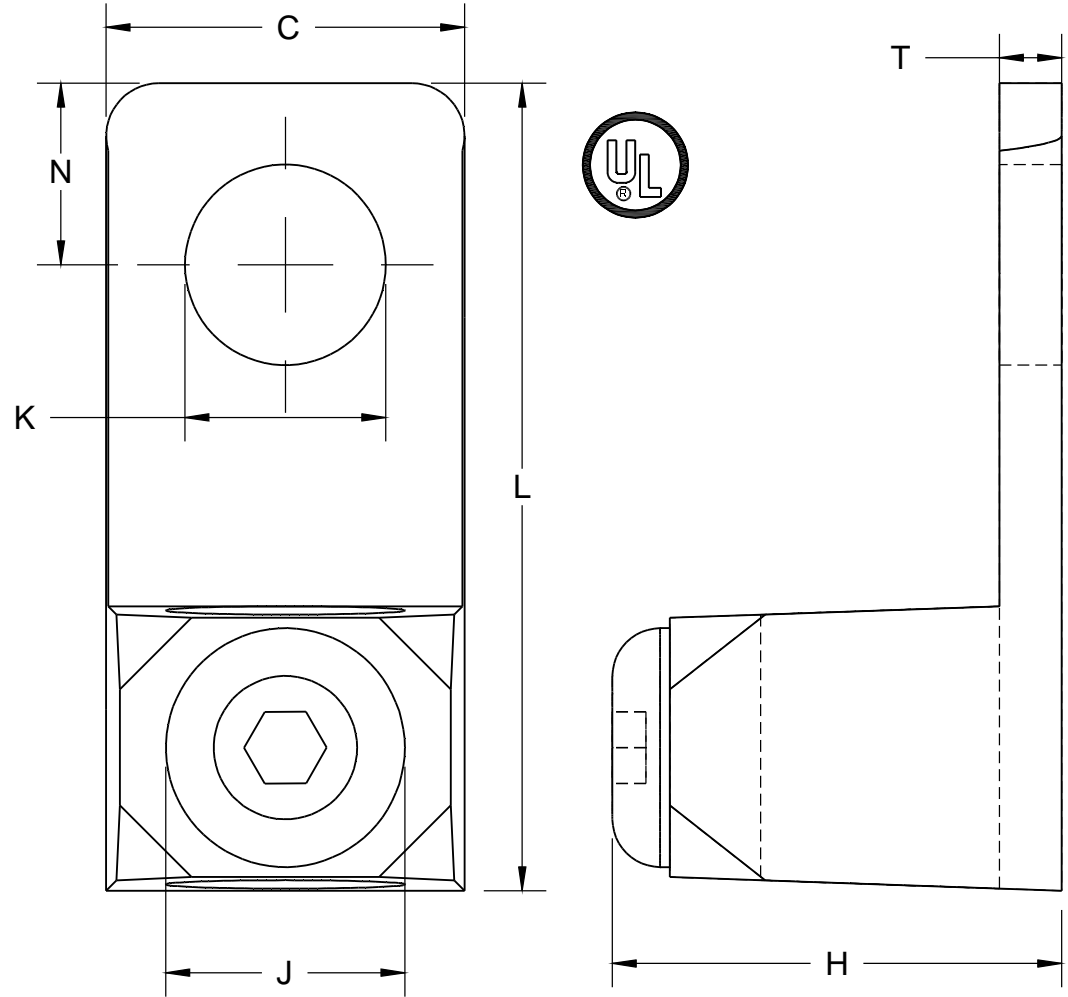

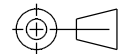


FIG 2.

PART NO.	C	H	J	K	L	N	T	CATALOG NO.	CONDUCTOR	FIG
3A253-1	.54 [13.72]	.77 [19.56]	.31 [7.87]	.28 [7.11]	1.11 [28.19]	.25 [6.35]	.08 [2.03]	KA4C	14 SOL.-4 STR	1
3A253-2	.75 [19.05]	.94 [23.88]	.50 [12.70]	.42 [10.67]	1.69 [42.93]	.38 [9.65]	.13 [3.30]	KA25	4 STR.-1/0 STR.	2
3A253-3	MAKE FROM 3A253-2 BY REDRILLING "K" TO "Ø.531"									2

DRAWING REVISION C	REVISION BY AJW	DATE 12-02-2014	TOLERANCES UNLESS OTHERWISE SPECIFIED: <div>DEC. INCH mm ANGLE</div> <div>.X ±0.1 [±2.5] ±0.5°</div> <div>.XX ±0.01 [±0.25]</div> <div>XXX ±0.005 [±0.127]</div> <div>.XXXX ±0.0005 [±0.0127]</div> <div>REMOVE BURRS & BREAK SHARP EDGES: .003/.015 [.076/.381] CORNER FILLETS: .02 [.51] MACHINED SURFACES: 125/3.2 INCH mm</div> <div>mm SHOWN IN [BRACKETS]</div>	DRAWN BY TEN	<div> Regal Beloit America, Inc.</div>				
ECO ECO-0066253	APPROVED BY TDB	DATE 12-02-2014		DATE 02-20-1997	<div>DESCRIPTION</div> <div>LUG</div> <div>NEMA MOTORS GROUND LUG</div>				
ECO DESCRIPTION UPDATED TO CURRENT STANDARDS				APPROVED BY BTH					
COPYRIGHT REGAL BELOIT AMERICA, INC. ALL RIGHTS RESERVED. PROPRIETARY AND CONFIDENTIAL INFORMATION - THIS DOCUMENT IS THE PROPERTY OF REGAL BELOIT AMERICA, INC. ("OWNER") AND CONTAINS OWNER'S PROPRIETARY INFORMATION. ANY PERSON, CORPORATION OR OTHER FIRM RECEIVING IT IS DEEMED, BY RECEIVING IT, TO AGREE THAT IT, AND/OR ANY PART OF IT, SHALL NOT BE DISCLOSED TO ANY PERSON, CORPORATION OR OTHER ENTITY, DUPLICATED, AND/OR USED, EXCEPT AS EXPRESSLY APPROVED IN WRITING IN ADVANCE BY OWNER. THIS DOCUMENT SHALL BE RETURNED TO OWNER UPON REQUEST. IT MAY BE SUBJECT TO CERTAIN RESTRICTIONS UNDER APPLICABLE EXPORT CONTROL LAWS AND REGULATIONS.				DATE 02-20-1997					
				REFERENCE	MATERIAL			PROCESS/FINISH	
				THIRD ANGLE PROJECTION		SIZE A	DRAWING NUMBER 3A253		