

# PRODUCT INFORMATION PACKET



Model No: 93032-13A  
Catalog No: 93032-13A  
B-93032-13A INPRO 3.503 OD 2.50 ID/ARCTIC

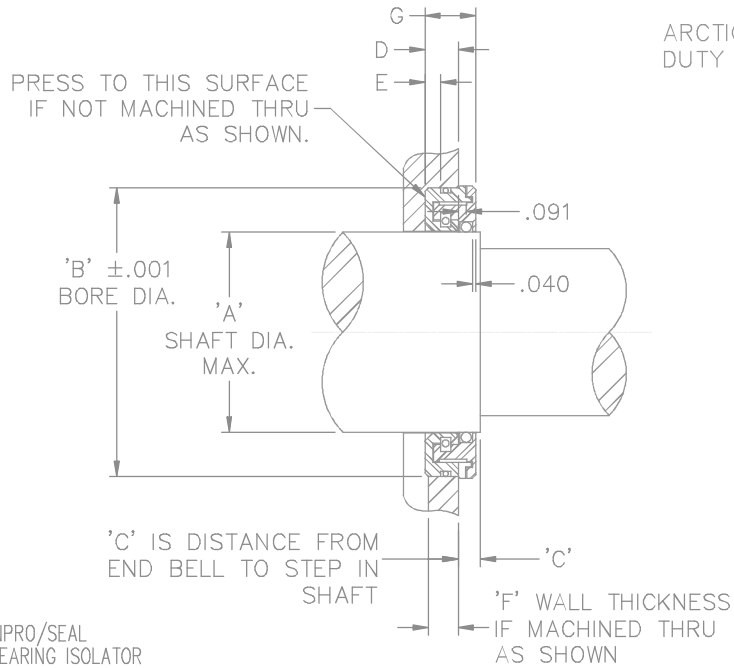
Regal and Marathon are trademarks of Regal Rexnord Corporation or one of its affiliated companies.  
©2025 Regal Rexnord Corporation, All Rights Reserved. MC017097E



## Nameplate Specifications

## Technical Specifications

This is an uncontrolled document once printed or downloaded and is subject to change without notice. Date Created:04/05/2025




ARCTIC DUTY

STATOR = STAINLESS STEEL = O-RING BUNA-N  
 ROTOR = BRONZE = O-RING FLUOROSILICONE  
 VBX O-RING FLUOROSILICONE

## MOTOR DRIVE END OR OPP. DRIVE END

| MOTOR DRIVE END OR OPP. DRIVE END |              |                    |                     |       |         |      |      |     |      |     |             |  |  |
|-----------------------------------|--------------|--------------------|---------------------|-------|---------|------|------|-----|------|-----|-------------|--|--|
| DASH                              | BEARING SIZE | VENDOR PART NUMBER | REFERENCE DIMENSION |       |         |      |      |     |      |     | REMARKS     |  |  |
|                                   |              |                    | 'A'                 | 'B'   | 'C'     | 'D'  | 'E'  | 'F' | 'G'  | REV |             |  |  |
| 1                                 |              |                    |                     |       |         |      |      |     |      |     |             |  |  |
| 2                                 |              |                    |                     |       |         |      |      |     |      |     |             |  |  |
| 3                                 | 203/303      | 3000-RA-26714-15   | .669                | 1.425 | .32     | .280 | .150 | .19 | .575 | 4   |             |  |  |
| 4                                 |              |                    |                     |       |         |      |      |     | .575 |     |             |  |  |
| 5                                 | 205/305      | 3000-RA-14891-15   | .969                | 1.828 | .32     | .280 | .150 | .19 | .575 | 4   |             |  |  |
| 6                                 | 206/306      | 3000-RA-14892-15   | 1.157               | 2.157 | .22     | .375 | .225 | .19 | .575 | 4   |             |  |  |
| 6A                                | 206/306      | 3000-RA-41549-15   | 1.181               | 2.000 | .19     | .375 | .175 |     | .575 |     | 06-28-2013  |  |  |
| 7                                 | 207/307      | 3000-RA-14893-15   | 1.378               | 2.375 | .19     | .375 | .225 | .25 | .575 | 4   |             |  |  |
| 8                                 | 208/308      | 3000-RA-14894-15   | 1.468               | 2.374 | .19     | .375 | .225 | .25 | .575 |     |             |  |  |
| 9                                 | 209/309      | 3000-RA-14895-15   | 1.687               | 2.686 | .19     | .375 | .175 |     | .575 | 4   |             |  |  |
| 10                                | 210/310      | 3000-RA-14896-15   | 1.875               | 2.875 | .19     | .375 | .175 |     | .575 | 4   |             |  |  |
| 11                                | 211/311      | 3000-RA-14897-15   | 2.062               | 3.125 | .19/.25 | .375 | .175 | .28 | .575 | 4   |             |  |  |
| 12                                | 212/312      | 3000-RA-14898-15   | 2.250               | 3.251 | .25     | .375 | .175 |     | .575 | 4   |             |  |  |
| 13A                               | 213/313      |                    | 2.500               | 3.501 | .25     | .375 | .175 |     | .575 |     | 10-17-2011  |  |  |
| 13                                | 213/313      | 3000-RA-14899-15   | 2.437               | 3.481 | .25     | .375 | .175 |     | .575 | 4   |             |  |  |
| 14                                | 214/314      | 3000-RA-14900-15   | 2.625               | 3.623 | .25     | .375 | .175 |     | .575 | 4   |             |  |  |
| 15                                | 215/315      | 3000-RA-14899-15   | 2.437               | 3.481 | .25     | .375 | .175 |     | .575 |     | USE DASH 13 |  |  |
| 16                                | 216/316      | 3000-RA-14901-15   | 3.000               | 4.003 | .25     | .375 | .175 |     | .575 | 4   |             |  |  |
| 17                                | 217/317      |                    |                     |       |         | .375 | .175 |     | .575 |     |             |  |  |
| 18                                | 218/318      | 3000-RA-14902-15   | 3.375               | 4.376 | .25     | .375 | .175 |     | .575 | 4   |             |  |  |
| 19                                | 219/319      | 3000-RA-14903-15   | 3.562               | 4.626 | .25     | .375 | .175 |     | .575 | 4   |             |  |  |
| 20                                | 220/320      | 3000-RA-14904-15   | 3.812               | 4.999 | .25     | .375 | .175 |     | .575 |     |             |  |  |
| 21                                | 221/321      |                    |                     |       |         | .375 | .175 |     | .575 |     |             |  |  |
| 22                                | 222/322      | 3000-RA-14905-15   | 4.187               | 5.251 | .25     | .375 | .175 |     | .575 |     |             |  |  |
| 24                                | 224/324      | 3000-RA-14906-15   | 4.562               | 5.751 | .25     | .375 | .175 |     | .575 |     |             |  |  |
| 25                                | 209/309      | 3000-RA-16950-15   | 1.766               | 2.750 | .19     | .375 | .175 |     | .575 |     | JM-JP ONLY  |  |  |
| 26                                | 226/326      |                    | 5.000               | 6.000 | .25     | .450 | .075 |     | .700 |     |             |  |  |
| 27                                | 224/324      |                    | 4.625               | 5.751 | .25     | .375 | .175 |     | .575 |     | 461 SERIES  |  |  |

|   |  |                |     |       |                             |   |   |  |                      |             |            |    |      |
|---|--|----------------|-----|-------|-----------------------------|---|---|--|----------------------|-------------|------------|----|------|
|   |  |                |     |       | TOLERANCES UNLESS SPECIFIED |   |  <b>REGAL-BELOIT CORPORATION</b> |  | DRAWN JJB 01-16-2007 |             |            |    |      |
| 4   | REVISED VENDOR PART NUMBERS; PART REVISIONS    | WGJ 5/5/2011   | EMH | DEC.  | INCHES                      |   |   |  | CHK                  | ML          | 01-17-2007 |    |      |
|   | CHANGED TO MATCH ORACLE ISAAC 11-1465          |                |     | .X    | ±.1                         |   |   |  | APPD                 | GK          | 01-17-2007 |    |      |
| 3   | REVISED VENDOR P/N FOR ALL DASHES ISAAC10-2857 | TJW 7/13/2010  | CTO | .XX   | ±.02                        | TITLE INPRO SEAL/BRG ISOLATOR – IEEE 841<br>575 SERIES – ARCTIC DUTY –25°C TO –60°C |   |  | SCALE                | 1=1         |            |    |      |
| 2   | REVISED EXPULSION SLOT NOTES CN09-3580         | TJW 9/21/2009  | CTO | .XXX  | ±.005                       |   |   |  | REF                  |             |            |    |      |
| 1   | -15 WAS -11 IN ALL VENDOR PART NO.'S CN 41255  | DRS 03-28-2007 | ML  | .XXXX | ±.0005                      | MAT'L   |   |  | FMF                  | DES. DEV.   |            |    |      |
| NO.   | REVISION                                       | BY & DATE      | CHK | ANG   | ±7°30"                      | FINISH  |   |  | PREV                 | 91395       |            |    |      |
| THIS DRAWING IN DESIGN AND DETAIL IS OUR PROPERTY AND MUST NOT BE USED EXCEPT IN CONNECTION WITH OUR WORK. ALL RIGHTS OF DESIGN AND INVENTION ARE RESERVED. THIS IS AN ELECTRONICALLY GENERATED DOCUMENT – DO NOT SCALE THIS PRINT. |  |                |     | RFP   | CAD FILE 93032              |   |   |  | SIZE                 | DRAWING NO. | PAGE       | OF | REV. |
|   |  |                |     | DIST  | WA-LB-PR                    |   |   |  | B                    | 93032       |            | 4  |      |

(INPRO NO. TN02064)