

PRODUCT INFORMATION PACKET



Model No: 93017-19
Catalog No: 93017-19
B-93017-19 ENCODER AVTRON HS35M

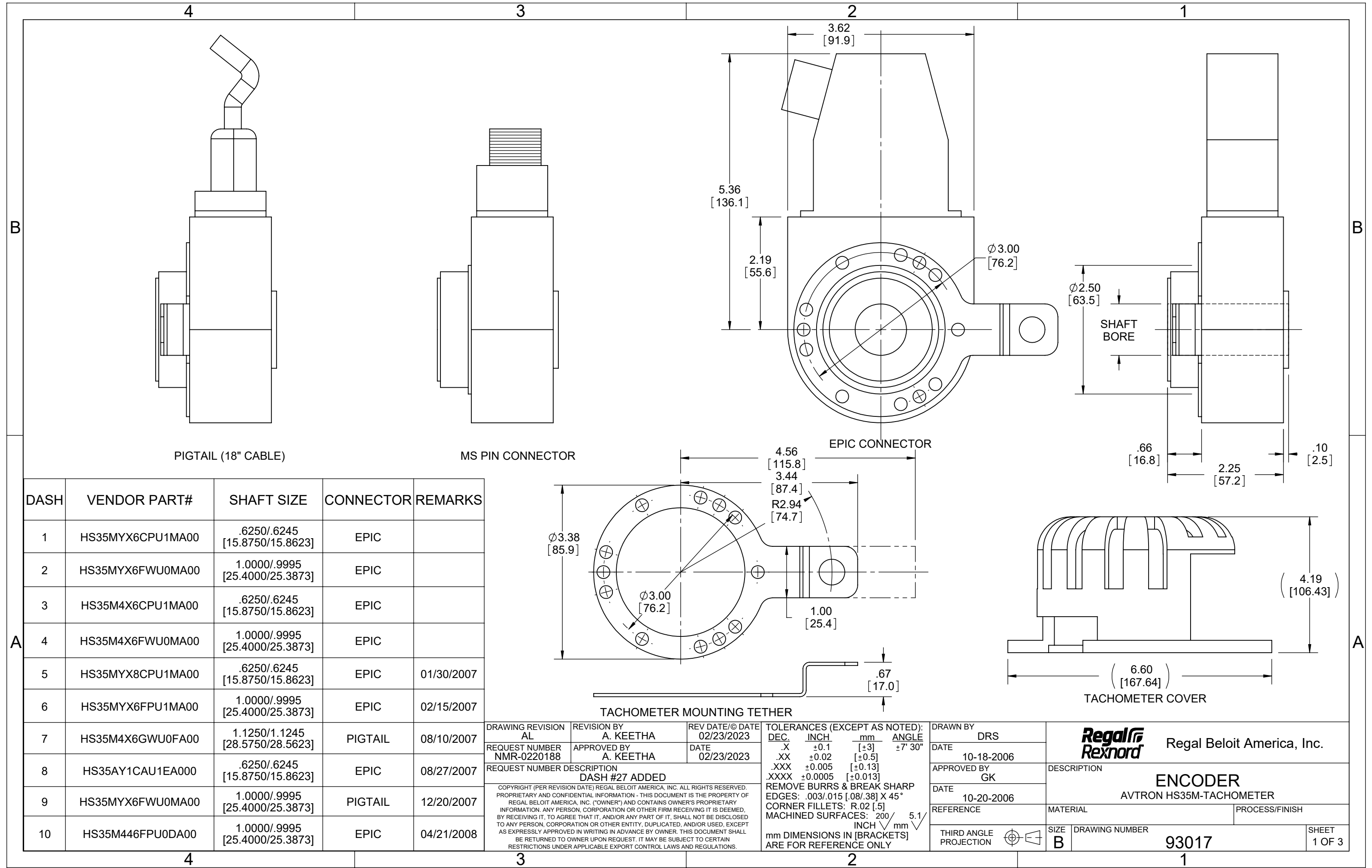
Regal and Marathon are trademarks of Regal Rexnord Corporation or one of its affiliated companies.
©2025 Regal Rexnord Corporation, All Rights Reserved. MC017097E

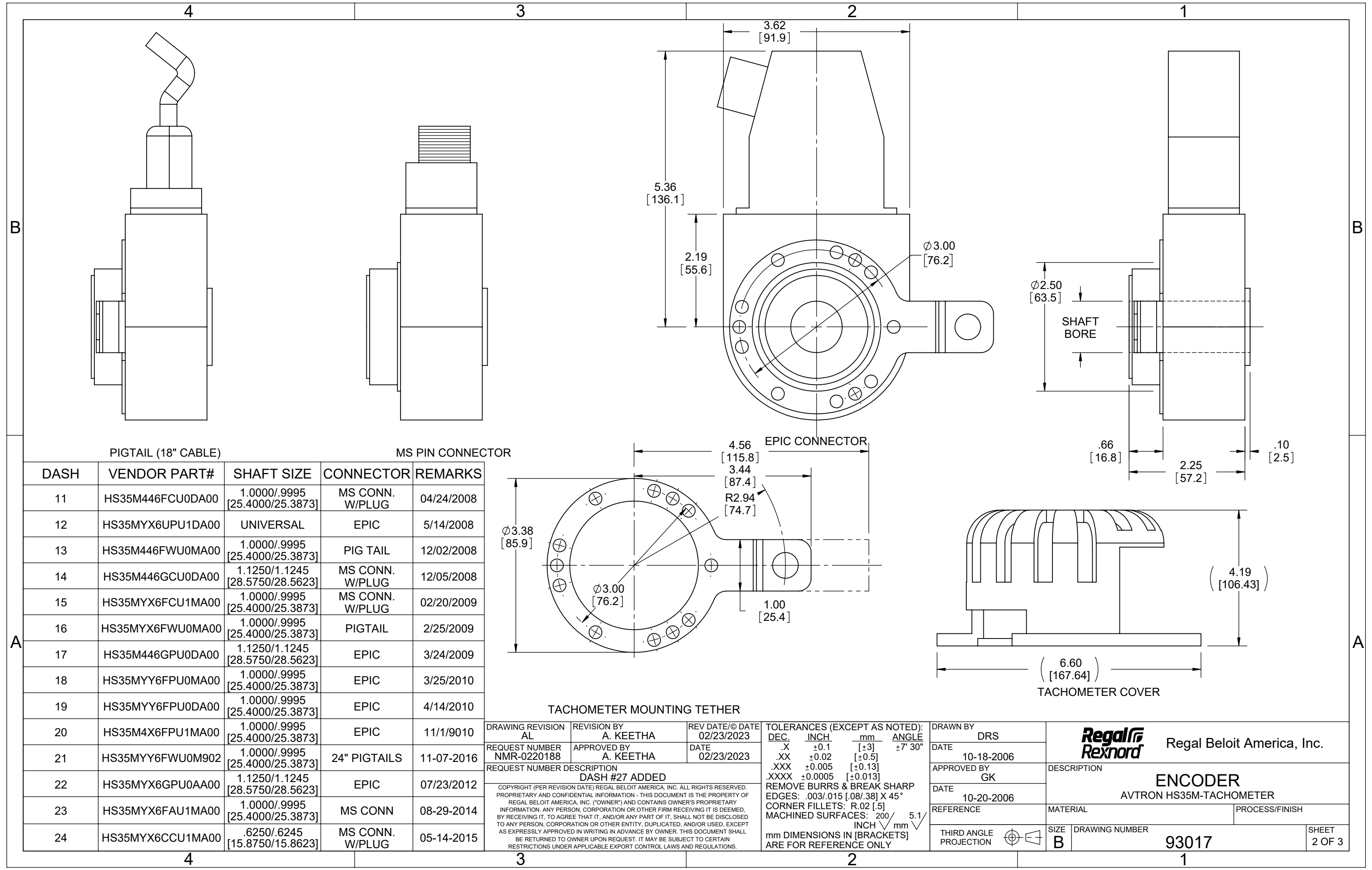


Nameplate Specifications

Technical Specifications

This is an uncontrolled document once printed or downloaded and is subject to change without notice. Date Created:04/05/2025





PIGTAIL (18" CABLE)					MS PIN CONNECTOR				
DASH	VENDOR PART#	SHAFT SIZE	CONNECTOR	REMARKS	DASH	VENDOR PART#	SHAFT SIZE	CONNECTOR	REMARKS
11	HS35M446FCU0DA00	1.0000/.9995 [25.4000/25.3873]	MS CONN. W/PLUG	04/24/2008	12	HS35MYX6UPU1DA00	UNIVERSAL	EPIC	5/14/2008
13	HS35M446FWU0MA00	1.0000/.9995 [25.4000/25.3873]	PIG TAIL	12/02/2008	14	HS35M446GCU0DA00	1.1250/1.1245 [28.5750/28.5623]	MS CONN. W/PLUG	12/05/2008
15	HS35MYX6FCU1MA00	1.0000/.9995 [25.4000/25.3873]	MS CONN. W/PLUG	02/20/2009	16	HS35MYX6FWU0MA00	1.0000/.9995 [25.4000/25.3873]	PIGTAIL	2/25/2009
17	HS35M446GPU0DA00	1.1250/1.1245 [28.5750/28.5623]	EPIC	3/24/2009	18	HS35MYX6FWU0MA00	1.0000/.9995 [25.4000/25.3873]	EPIC	3/25/2010
19	HS35MYX6GPU0DA00	1.0000/.9995 [25.4000/25.3873]	EPIC	4/14/2010	20	HS35M4X6FPU1MA00	1.0000/.9995 [25.4000/25.3873]	EPIC	11/1/9010
21	HS35MYX6FWU0M902	1.0000/.9995 [25.4000/25.3873]	24" PIGTAILS	11-07-2016	22	HS35MYX6GPU0AA00	1.1250/1.1245 [28.5750/28.5623]	EPIC	07/23/2012
23	HS35MYX6FAU1MA00	1.0000/.9995 [25.4000/25.3873]	MS CONN	08-29-2014	24	HS35MYX6CCU1MA00	.6250/.6245 [15.8750/15.8623]	MS CONN. W/PLUG	05-14-2015

DRAWING REVISION
AL

REVISION BY
A. KEETHA

REV DATE/© DATE
02/23/2023

REQUEST NUMBER
NMR-0220188

APPROVED BY
A. KEETHA

DATE
02/23/2023

REQUEST NUMBER DESCRIPTION
DASH #27 ADDED

COPYRIGHT (PER REVISION DATE) REGAL BELOIT AMERICA, INC. ALL RIGHTS RESERVED. PROPRIETARY AND CONFIDENTIAL INFORMATION - THIS DOCUMENT IS THE PROPERTY OF REGAL BELOIT AMERICA, INC. ("OWNER") AND CONTAINS OWNER'S PROPRIETARY INFORMATION. ANY PERSON, CORPORATION OR OTHER FIRM RECEIVING IT IS DEEMED, BY RECEIVING IT, TO AGREE THAT IT, AND/OR ANY PART OF IT, SHALL NOT BE DISCLOSED TO ANY PERSON, CORPORATION OR OTHER ENTITY, DUPLICATED, AND/OR USED, EXCEPT AS EXPRESSLY APPROVED IN WRITING IN ADVANCE BY OWNER. THIS DOCUMENT SHALL BE RETURNED TO OWNER UPON REQUEST. IT MAY BE SUBJECT TO CERTAIN RESTRICTIONS UNDER APPLICABLE EXPORT CONTROL LAWS AND REGULATIONS.

TOLERANCES (EXCEPT AS NOTED):
DEC. INCH mm ANGLE
.X ±0.1 [±3] ±7° 30"
.XX ±0.02 [±0.5]
.XXX ±0.005 [±0.13]
.XXXX ±0.0005 [±0.013]
REMOVE BURRS & BREAK SHARP
EDGES: .003/.015 [0.08/.38] X 45°
CORNER FILLETS: R.02 [.5]
MACHINED SURFACES: 200 INCH/mm 5.1
mm DIMENSIONS IN [BRACKETS]
ARE FOR REFERENCE ONLY

DRAWN BY
DRS

DATE
10-18-2006

APPROVED BY
GK

DATE
10-20-2006

REFERENCE

THIRD ANGLE
PROJECTION

Regal Rexnord

Regal Beloit America, Inc.

ENCODER

AVTRON HS35M-TACHOMETER

SIZE B

DRAWING NUMBER 93017

SHEET 2 OF 3

