

PRODUCT INFORMATION PACKET



Model No: 7740-88
Catalog No: 7740-88
A-7740-88RC RISER .437 ID X 2.625 LG

Regal and Marathon are trademarks of Regal Rexnord Corporation or one of its affiliated companies.
©2025 Regal Rexnord Corporation, All Rights Reserved. MC017097E



Nameplate Specifications

Technical Specifications

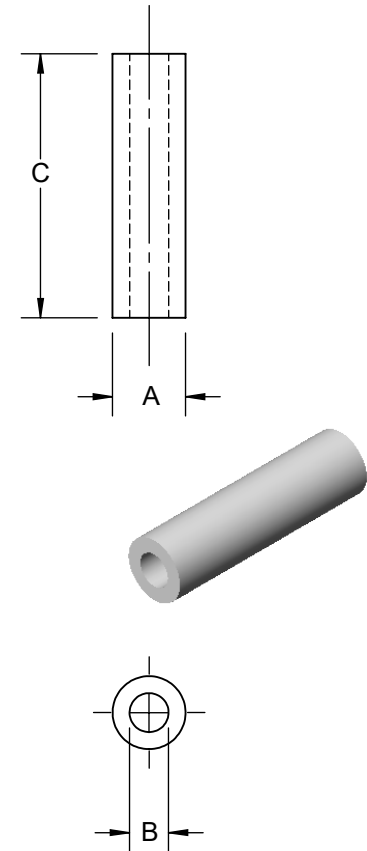
This is an uncontrolled document once printed or downloaded and is subject to change without notice. Date Created:04/05/2025

DASH	A	B	C	REMARKS	ITEM REV.
1	.38 [9.65]	.208 ^[5.283] [203 ^{5.156}]	.281 [7.137]		
2	.252 ^[6.401] [327 ^{8.306}]	.203 [5.156]	.500 [12.700]	CAN BE SPLIT ROLLED CONSTRUCTION	56
3	.252 ^[6.401] [327 ^{8.306}]	.203 [5.156]	1.250 [31.750]	CAN BE SPLIT ROLLED CONSTRUCTION	56
4	.50 [12.70]	.260 ^[6.604] [255 ^{6.477}]	.328 [8.331]		
5	.44 [11.18]	.197 [5.004]	.937 [23.800]		
6	.252 ^[6.401] [327 ^{8.306}]	.203 [5.156]	.187 [4.750]	CAN BE SPLIT ROLLED CONSTRUCTION	56
7	.50 [12.70]	.282 [7.163]	.500 [12.700]		56
8	.50 [12.70]	.282 [7.163]	.687 [17.550]		
9	.38 [9.65]	.208 ^[5.283] [203 ^{5.156}]	1.375 [34.925]		
10	.38 [9.65]	.208 ^[5.283] [203 ^{5.156}]	.468 [11.887]		
11	.38 [9.65]	.208 ^[5.283] [203 ^{5.156}]	1.000 [25.400]		56
12	.50 [12.70]	.282 [7.163]	.812 [20.625]		0
13	.252 ^[6.401] [327 ^{8.306}]	.203 [5.156]	.250 [6.350]		56
14	.50 [12.70]	.282 [7.163]	.437 [11.100]		
15	.38 [9.65]	.208 ^[5.283] [203 ^{5.156}]	.968 [24.587]		56
16	.56 [14.22]	.432 [10.973]	.218 [5.537]		
17	.38 [9.65]	.208 ^[5.283] [203 ^{5.156}]	.314 [7.976]		
18	.44 [11.18]	.197 [5.004]	1.437 [36.500]		
19	.56 [14.22]	.343 [8.712]	1.750 [44.450]		
20	.50 [12.70]	.282 [7.163]	1.000 [25.400]		56
21	.44 [11.18]	.197 [5.004]	1.156 [29.362]		
22	.75 [19.05]	.282 [7.163]	.250 [6.350]		
23	.50 [12.70]	.282 [7.163]	1.125 [28.575]		
24	.50 [12.70]	.282 [7.163]	1.375 [34.925]		56
25	.50 [12.70]	.282 [7.163]	1.250 [31.750]		

DASH	A	B	C	REMARKS	ITEM REV.
26	.56 [14.22]	.396 [10.058]	2.250 [57.150]		
27	.75 [19.05]	.532 [13.513]	.500 [12.700]		0
28	.44 [11.18]	.197 [5.004]	.781 [19.837]		
29	.44 [11.18]	.197 [5.004]	.812 [20.625]		
30	.75 [19.05]	.532 [13.513]	.750 [19.050]		
31	.38 [9.65]	.250 [6.350]	.125 [3.175]		
32	.38 [9.65]	.208 ^[5.283] [203 ^{5.156}]	.562 [14.275]		56
33	.75 [19.05]	.282 [7.163]	.625 [15.875]		56
34	.50 [12.70]	.282 [7.163]	.375 [9.525]		0
35	.56 [14.22]	.432 [10.973]	.750 [19.050]		
36	.38 [9.65]	.187 [4.750]	.312 [7.925]		
37	.38 [9.65]	.208 ^[5.283] [203 ^{5.156}]	.437 [11.100]		
38	.252 ^[6.401] [327 ^{8.306}]	.203 [5.156]	.375 [9.525]	CAN BE SPLIT ROLLED CONSTRUCTION	56
39	.25 [6.35]	.180 [4.572]	.640 [16.256]		
40	.75 [19.05]	.509 ^[12.929] [508 ^{12.903}]	.687 [17.450]		
41	1.50 [38.10]	.562 [14.275]	2.500 [63.500]		
42	.50 [12.70]	.187 [4.750]	.375 [9.525]		
43	.44 [11.18]	.197 [5.004]	.656 [16.662]		
44	.62 [15.75]	.375 [9.525]	.281 [7.137]		
45	.252 ^[6.401] [327 ^{8.306}]	.203 [5.156]	.312 [7.925]	CAN BE SPLIT ROLLED CONSTRUCTION	
46	.290 ^[7.366] [327 ^{8.306}]	.203 [5.156]	1.125 [28.575]	OBSOLETE USE -3	
47	.290 ^[7.366] [327 ^{8.306}]	.203 [5.156]	.750 [19.050]	CAN BE SPLIT ROLLED CONSTRUCTION	56
48	.44 [11.18]	.197 [5.004]	1.687 [42.850]		
49	.67 [17.02]	.500 [12.700]	.687 [17.450]	.375 [9.525] PIPE	
50	.55 [13.97]	.359 [9.119]	2.250 [57.150]	.250 [6.350] PIPE	

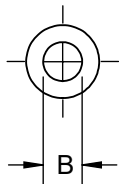
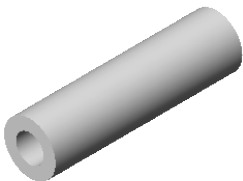
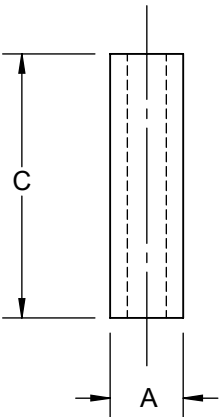
ENG REF. ONLY:
A-9606 STAINLESS STL.
E-7741 BRASS MAT.
E-7796 BRONZE MAT.

DRAWING REVISION J		REVISION BY SAS		REV DATE/© DATE 05/02/2022		TOLERANCES (EXCEPT AS NOTED): DEC. INCH mm ANGLE .X ±0.1 [±3] ±7° 30" .XX ±0.02 [±0.5] .XXX ±0.005 [±0.13] .XXXX ±0.0005 [±0.013] REMOVE BURRS & BREAK SHARP EDGES: .003/.015 [.08/.38] X 45° CORNER FILLETS: R.02 [.5] MACHINED SURFACES: 200/ INCH mm 5.1 mm DIMENSIONS IN [BRACKETS] ARE FOR REFERENCE ONLY				DRAWN BY DA		Regal Beloit America, Inc.			
REQUEST NUMBER CR-0008628		APPROVED BY GM		DATE 05/02/2022						DATE 01-15-1991					
REQUEST NUMBER DESCRIPTION Added dash 134 & 135										APPROVED BY GK		DESCRIPTION			
COPYRIGHT (PER REVISION DATE) REGAL BELOIT AMERICA, INC. ALL RIGHTS RESERVED. PROPRIETARY AND CONFIDENTIAL INFORMATION - THIS DOCUMENT IS THE PROPERTY OF REGAL BELOIT AMERICA, INC. ("OWNER") AND CONTAINS OWNER'S PROPRIETARY INFORMATION. ANY PERSON, CORPORATION OR OTHER FIRM RECEIVING IT IS DEEMED, BY RECEIVING IT, TO AGREE THAT IT, AND/OR ANY PART OF IT, SHALL NOT BE DISCLOSED TO ANY PERSON, CORPORATION OR OTHER ENTITY, DUPLICATED, AND/OR USED, EXCEPT AS EXPRESSLY APPROVED IN WRITING IN ADVANCE BY OWNER. THIS DOCUMENT SHALL BE RETURNED TO OWNER UPON REQUEST. IT MAY BE SUBJECT TO CERTAIN RESTRICTIONS UNDER APPLICABLE EXPORT CONTROL LAWS AND REGULATIONS.										DATE 01-22-1991		SPACER			
						REFERENCE		MATERIAL STL COMM. QUAL. BAR OR TUBING		PROCESS/FINISH F-002 RoHS COMPLIANT					
						THIRD ANGLE PROJECTION				SIZE A		DRAWING NUMBER 7740		SHEET 1 OF 3	





ENG REF. ONLY:
A-9606 STAINLESS STL.
E-7741 BRASS MAT.
E-7796 BRONZE MAT.

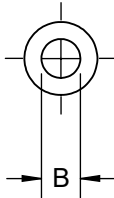
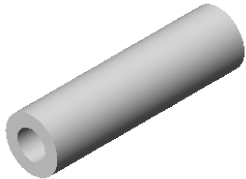
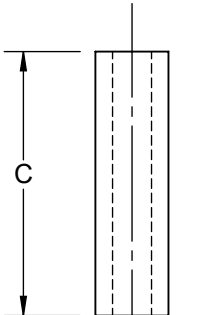
DASH	A	B	C	REMARKS	ITEM REV.	DASH	A	B	C	REMARKS	ITEM REV.
51	2.00 [50.80]	1.875 [47.625]	1.188 [30.175]			75	.67 [17.02]	.500 [12.700]	3.500 [88.900]	.375 [9.525] PIPE	
52	3.00 [76.20]	2.812 [71.425]	1.188 [30.175]			76	.38 [9.65]	.203 [5.156]	.859 [21.819]		
53	.25 [6.35]	.180 [4.572]	.890 [22.606]			77	.50 [12.70]	.282 [7.163]	1.688 [42.875]		
54	.55 [13.97]	.359 [9.1186]	2.750 [69.85]	.250 [6.350] PIPE		78	.25 [6.35]	.180 [4.572]	.390 [9.906]		
55	.50 [12.70]	.282 [7.163]	2.000 [50.800]			79	.31 [7.87]	.203 [5.156]	.125 [3.175]		
56	.50 [12.70]	.282 [7.163]	3.500 [88.900]			80	.56 [14.22]	.432 [10.973]	4.500 [114.300]		
57	.50 [12.70]	.282 [7.163]	.625 [15.875]			81	.50 [12.70]	.282 [7.163]	1.750 [44.450]		
58	.50 [12.70]	.282 [7.163]	2.500 [63.500]			82	.56 [14.22]	.375 [9.525]	.500 [12.700]		
59	.50 [12.70]	.282 [7.163]	2.938 [74.625]			83	1.62 [41.148]	.625 [15.875]	2.875 [73.025]		
60	.25 [6.35]	.180 [4.572]	.156 [3.962]			84	1.62 [41.148]	.625 [15.875]	1.750 [44.450]		
61	.50 [12.70]	.282 [7.163]	.250 [6.350]		0	85	.50 [12.70]	.282 [7.163]	3.000 [76.200]		
62	.50 [12.70]	.282 [7.163]	4.000 [101.600]			86	.50 [12.70]	.282 [7.163]	1.500 [38.100]		
63	.75 [19.05]	.437 [11.100]	2.250 [57.150]		70	87	.50 [12.70]	.282 [7.163]	3.250 [82.550]		
64	.38 [9.65]	.250 [6.350]	.250 [6.350]			88	.56 [14.22]	.437 [11.100]	2.625 [66.675]		70
65	.50 [12.70]	.282 [7.163]	2.750 [69.850]			89	.50 [12.70]	.282 [7.163]	3.156 [80.162]		
66	.50 [12.70]	.282 [7.163]	1.875 [47.625]			90	.50 [12.70]	.282 [7.163]	2.625 [66.675]		
67	.56 [14.22]	.432 [10.973]	.875 [22.225]		70	91	1.00 [25.40]	.625 [15.875]	.500 [12.700]		
68	.56 [14.22]	.432 [10.973]	.500 [12.700]			92	1.00 [25.40]	.625 [15.875]	1.125 [28.575]		
69	.50 [12.70]	.282 [7.163]	1.625 [41.275]			93	1.00 [25.40]	.625 [15.875]	1.500 [38.100]		
70	.38 [9.65]	.208 [5.283] .203 [5.156]	.187 [4.750]			94	1.00 [25.40]	.625 [15.875]	1.219 [30.963]		
71	.56 [14.22]	.396 [10.058]	1.625 [41.275]		0	95	.56 [14.22]	.432 [10.973]	4.562 [115.875]		
72	.50 [12.70]	.282 [7.163]	4.438 [112.725]			96	.31 [7.874]	.198 [5.029] .206 [5.232]	.746 [18.948]	CAN BE SPLIT ROLLED CONSTRUCTION	70
73	.50 [12.70]	.282 [7.163]	3.625 [92.075]			97	.31 [7.874]	.198 [5.029] .206 [5.232]	.929 [23.597]	CAN BE SPLIT ROLLED CONSTRUCTION	70
74	.67 [17.02]	.500 [12.700]	1.125 [28.575]	.375 [9.525] PIPE		98	.31 [7.874]	.194 [4.928] .206 [5.232]	.500 [12.700]	CAN BE SPLIT ROLLED CONSTRUCTION	70




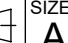
ENG REF. ONLY:
A-9606 STAINLESS STL.
E-7741 BRASS MAT.
E-7796 BRONZE MAT.

DRAWING REVISION J	REVISION BY SAS	REV DATE/© DATE 05/02/2022	TOLERANCES (EXCEPT AS NOTED): DEC. INCH mm ANGLE .X ±0.1 [±3] ±7° 30" .XX ±0.02 [±0.5] .XXX ±0.005 [±0.13] .XXXX ±0.0005 [±0.013] REMOVE BURRS & BREAK SHARP EDGES: .003/.015 [.08/.38] X 45° CORNER FILLETS: R.02 [.5] MACHINED SURFACES: 200/ 5.1/ INCH mm mm DIMENSIONS IN [BRACKETS] ARE FOR REFERENCE ONLY	DRAWN BY DA	 Regal Beloit America, Inc.			
REQUEST NUMBER CR-0008628	APPROVED BY GM	DATE 05/02/2022		DATE 01-15-1991	DESCRIPTION SPACER			
REQUEST NUMBER DESCRIPTION Added dash 134 & 135				APPROVED BY GK				
COPYRIGHT (PER REVISION DATE) REGAL BELOIT AMERICA, INC. ALL RIGHTS RESERVED. PROPRIETARY AND CONFIDENTIAL INFORMATION - THIS DOCUMENT IS THE PROPERTY OF REGAL BELOIT AMERICA, INC. ("OWNER") AND CONTAINS OWNER'S PROPRIETARY INFORMATION. ANY PERSON, CORPORATION OR OTHER FIRM RECEIVING IT IS DEEMED, BY RECEIVING IT, TO AGREE THAT IT, AND/OR ANY PART OF IT, SHALL NOT BE DISCLOSED TO ANY PERSON, CORPORATION OR OTHER ENTITY, DUPLICATED, AND/OR USED, EXCEPT AS EXPRESSLY APPROVED IN WRITING IN ADVANCE BY OWNER. THIS DOCUMENT SHALL BE RETURNED TO OWNER UPON REQUEST. IT MAY BE SUBJECT TO CERTAIN RESTRICTIONS UNDER APPLICABLE EXPORT CONTROL LAWS AND REGULATIONS.				DATE 01-22-1991				
				REFERENCE	MATERIAL STL COMM. QUAL. BAR OR TUBING	PROCESS/FINISH F-002 RoHS COMPLIANT		
				THIRD ANGLE PROJECTION		SIZE A	DRAWING NUMBER 7740	SHEET 2 OF 3

DASH	A	B	C	REMARKS	ITEM REV.	DASH	A	B	C	REMARKS	ITEM REV.
99	.50 [12.70]	.282 [7.163]	4.250 [107.950]			123	.27 [6.86]	.168 [4.267] [.180 4.572]	.835 [21.209]		6
100	.23 [5.842]	.176 [4.470]	.187 [4.750]	CAN BE SPLIT ROLLED CONSTRUCTION		124	.75 [19.05]	.532 [13.513]	2.06 [52.32]		0
101	.23 [5.842]	.176 [4.470]	.437 [11.100]	CAN BE SPLIT ROLLED CONSTRUCTION		125	.75 [19.05]	.532 [13.513]	1.00 [25.40]		
102	.31 [7.874]	.183 [4.648]	.375 [9.525]			126	1.00 [25.40]	.625 [15.875]	2.56 [65.02]		6
103	.56 [14.22]	.343 [8.712]	1.625 [41.275]		70	127	.75 [19.05]	.44 [11.18]	1.19 [30.23]		0
104	.31 [7.874]	.198 [5.029] [.203 5.156]	4.22 [10.719]	CAN BE SPLIT ROLLED CONSTRUCTION		128	.75 [19.05]	.38 [9.65]	.875 [22.225]		
105	.50 [12.70]	.281 [7.137] [.375 9.525]	.562 [14.275]	CAN BE SPLIT ROLLED CONSTRUCTION		129	.75 [19.05]	.532 [13.513]	1.25 [31.75]		0
106	.27 [6.86]	.168 [4.267] [.180 4.572]	.200 [5.080]		70	130	.56 [14.22]	.432 [10.973]	1.75 [44.45]		0
107	.31 [7.874]	.198 [5.029] [.203 5.156]	.790 [20.066]	CAN BE SPLIT ROLLED CONSTRUCTION	0	131	.75 [19.05]	.44 [11.18]	2.75 [69.85]		A
108	.27 [6.86]	.168 [4.267] [.180 4.572]	.300 [7.620]		70	132	.290 [7.366] [.327 8.306]	.203 [5.156]	1.75 [44.45]	CAN BE SPLIT ROLLED CONSTRUCTION	A
109	.62 [15.75]	.515 [13.081]	1.12 [28.45]	UNICORP PERT No. S-1669-M10-F21A-0		133	0.75 [19.05]	0.261 [6.630]	2.00 [50.80]		A
110	.31 [7.874]	.215 [5.461]	.585 [14.859]		6	134	1.50 [38.1]	.780 [19.81]	.50 [12.70]		0
111	.50 [12.70]	.282 [7.163]	2.375 [60.325]			135	.56 [14.22]	.43 [10.973]	.440 [11.176]		0
112	.50 [12.70]	.282 [7.163]	1.360 [34.544]								
113	.56 [14.22]	.432 [10.973]	.625 [15.875]		6						
114	.75 [19.05]	.437 [11.100]	1.000 [25.400]								
115	.27 [6.86]	.168 [4.267] [.180 4.572]	.150 [3.810]		6						
116	1.75 [44.45]	.812 [20.625]	1.000 [25.400]		6						
117	.27 [6.86]	.168 [4.267] [.180 4.572]	.440 [11.176]		6						
118	6.75 [171.45]	6.25 [158.75]	9.00 [228.60] ± .06 [1.52]	C-707 (DRAWN-OVER-MANDREL) ROUND MECHANICAL TUBING							
119	.75 [19.05]	.532 [13.513]	1.50 [38.10]		6						
120	.38 [9.65]	.194 [4.928] [.206 5.232]	.625 [15.875]	CAN BE SPLIT ROLLED CONSTRUCTION							
121	.75 [19.05]	.532 [13.513]	3.00 [76.20]		6						
122	.75 [19.05]	.44 [11.18]	.94 [23.88]		6						



ENG REF. ONLY:
A-9606 STAINLESS STL.
E-7741 BRASS MAT.
E-7796 BRONZE MAT.

DRAWING REVISION J	REVISION BY SAS	REV DATE/© DATE 05/02/2022	TOLERANCES (EXCEPT AS NOTED): DEC. INCH mm ANGLE .X ±0.1 [±3] ±7° 30" .XX ±0.02 [±0.5] .XXX ±0.005 [±0.13] .XXXX ±0.0005 [±0.013] REMOVE BURRS & BREAK SHARP EDGES: .003/.015 [.08/.38] X 45° CORNER FILLETS: R.02 [.5] MACHINED SURFACES: 200/ INCH mm 5.1/ mm DIMENSIONS IN [BRACKETS] ARE FOR REFERENCE ONLY		DRAWN BY DA	 Regal Beloit America, Inc.		
REQUEST NUMBER CR-0008628	APPROVED BY GM	DATE 05/02/2022			DATE 01-15-1991			
REQUEST NUMBER DESCRIPTION Added dash 134 & 135					APPROVED BY GK	DESCRIPTION SPACER		
<p>COPYRIGHT (PER REVISION DATE) REGAL BELOIT AMERICA, INC. ALL RIGHTS RESERVED. PROPRIETARY AND CONFIDENTIAL INFORMATION - THIS DOCUMENT IS THE PROPERTY OF REGAL BELOIT AMERICA, INC. ("OWNER") AND CONTAINS OWNER'S PROPRIETARY INFORMATION. ANY PERSON, CORPORATION OR OTHER FIRM RECEIVING IT IS DEEMED, BY RECEIVING IT, TO AGREE THAT IT, AND/OR ANY PART OF IT, SHALL NOT BE DISCLOSED TO ANY PERSON, CORPORATION OR OTHER ENTITY, DUPLICATED, AND/OR USED, EXCEPT AS EXPRESSLY APPROVED IN WRITING IN ADVANCE BY OWNER. THIS DOCUMENT SHALL BE RETURNED TO OWNER UPON REQUEST. IT MAY BE SUBJECT TO CERTAIN RESTRICTIONS UNDER APPLICABLE EXPORT CONTROL LAWS AND REGULATIONS.</p>					DATE 01-22-1991			
			REFERENCE	MATERIAL STL COMM. QUAL. BAR OR TUBING		PROCESS/FINISH F-002 RoHS COMPLIANT		
			THIRD ANGLE PROJECTION 	SIZE A	DRAWING NUMBER 7740		SHEET 3 OF 3	