

# PRODUCT INFORMATION PACKET



Model No: V210  
Catalog No: V210  
3,3500,DP,182T,1/60/115/230  
General Purpose Motors



Regal and Century are trademarks of Regal Rexnord Corporation or one of its affiliated companies.  
©2021 Regal Rexnord Corporation, All Rights Reserved. MC017097E





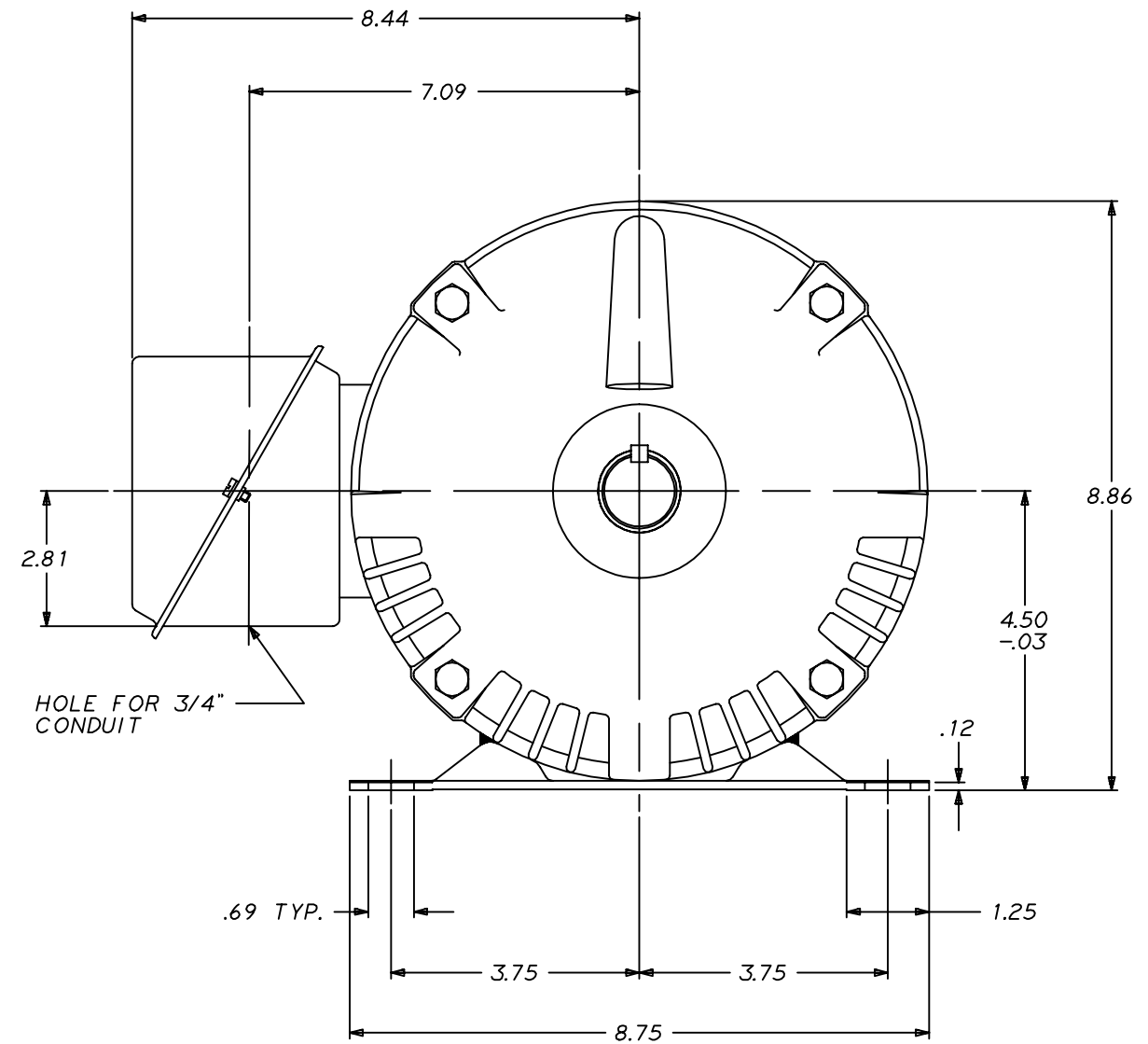
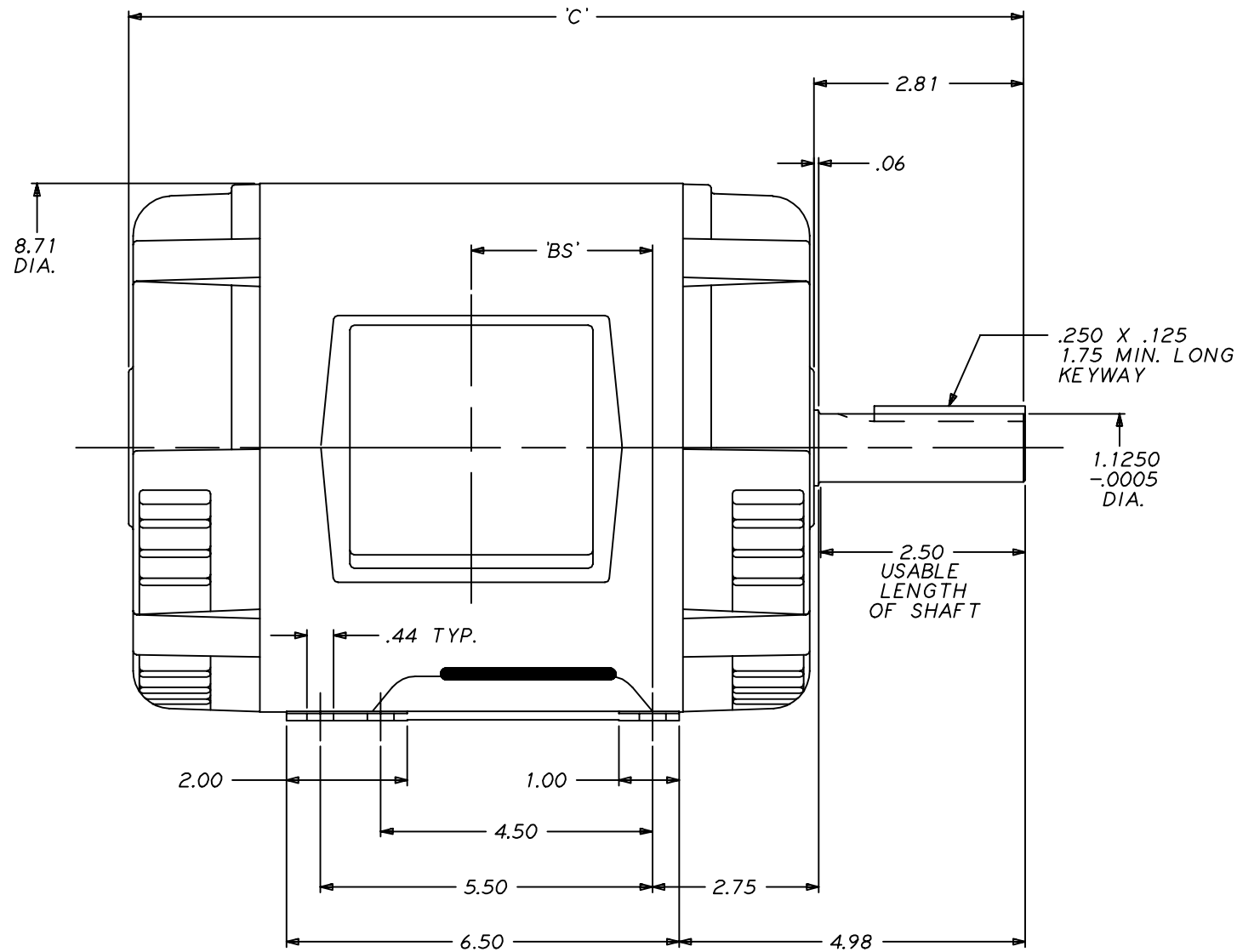
### Nameplate Specifications

Output HP	3.0 Hp	Output KW	2.2 kW
Frequency	60 Hz	Voltage	115/230 V
Current	32/16 A	Speed	3500 rpm
Service Factor	1.15	Phase	1
Duty	Continuous	Insulation Class	B
Frame	S182T	Enclosure	Drip Proof
Thermal Protection	None	Ambient Temperature	40 °C
UL	Recognized	CSA	Y
CE	Y	Number of Speeds	1

### Technical Specifications

Electrical Type	Capacitor Start, Induction Run, Single Or Dual Voltage	Starting Method	Across The Line
Poles	2	Rotation	Reversible
Mounting	Rigid Base	Drive End Bearing	Ball
Opp Drive End Bearing	Ball	Frame Material	Rolled Steel
Shaft Type	Keyed	Overall Length	13.67 in
Frame Length	6.50 in	Shaft Diameter	1.125 in
Shaft Extension	2.81 in		
Connection Drawing	80022846.PCX	Outline Drawing	11452800-S01

This is an uncontrolled document once printed or downloaded and is subject to change without notice. Date Created:10/11/2021



FRAME SIZE	FORM		
		'C'	'BS'
CP & CS L182T	M	14.67	2.69
CP & CS M182T	M	16.67	4.69
CP & CS S182T	M	13.67	1.69
CP & CS Y182T	M	14.17	2.19
CP & CS L184T	M	14.67	2.69
CP & CS M184T	M	16.67	4.69
CP & CS S184T	M	13.67	1.69
CP & CS Y184T	M	14.17	2.19

1 NEW ISSUE PER EMI  
331549-00.  
BJL 3-23-84

2 REVISED TO SHOW  
ONE PIECE BASE  
PER EAA 67208.  
PLM 5-189-85

3 ADDED Y180T PER  
EMI 370562-00.  
LGW/CLW 7-18-94

351976

CERTIFICATION OF A.C. MOTORS  
CERTIFIED FOR \_\_\_\_\_  
SPEC.NO. \_\_\_\_\_ ORDER NO. \_\_\_\_\_  
TYPE \_\_\_\_\_ FRAME \_\_\_\_\_ H.P. \_\_\_\_\_  
R.P.M. \_\_\_\_\_ VOLTS \_\_\_\_\_ PHASE \_\_\_\_\_  
HERTZ \_\_\_\_\_ AMPS \_\_\_\_\_ CODE \_\_\_\_\_  
BASE \_\_\_\_\_ QUANTITY \_\_\_\_\_  
REMARKS \_\_\_\_\_  
\_\_\_\_\_  
\_\_\_\_\_  
APPROVED BY \_\_\_\_\_ DATE \_\_\_\_\_

180T OPEN MOTOR WITH RIGID BASE, STEEL SHELL &  
ALUMINUM BRACKETS

APPROVED RDP 7-18-94

BJL 3-23-84

BJL 3-23-84

114528 5 1920 3