

PRODUCT INFORMATION PACKET



Model No: TPR3R18TFC182TC

Catalog No: TPR3R18TFC182TC

TPR3R18TFC182TC..3/2HP..1725RPM.182TC.TEFC.208-230/460//190/380V.3PH.60/50HZ.CONT.40C.1.15SF.ROUND

.....

Regal and Leeson are trademarks of Regal Rexnord Corporation or one of its affiliated companies.

©2023 Regal Rexnord Corporation, All Rights Reserved. MC017097E





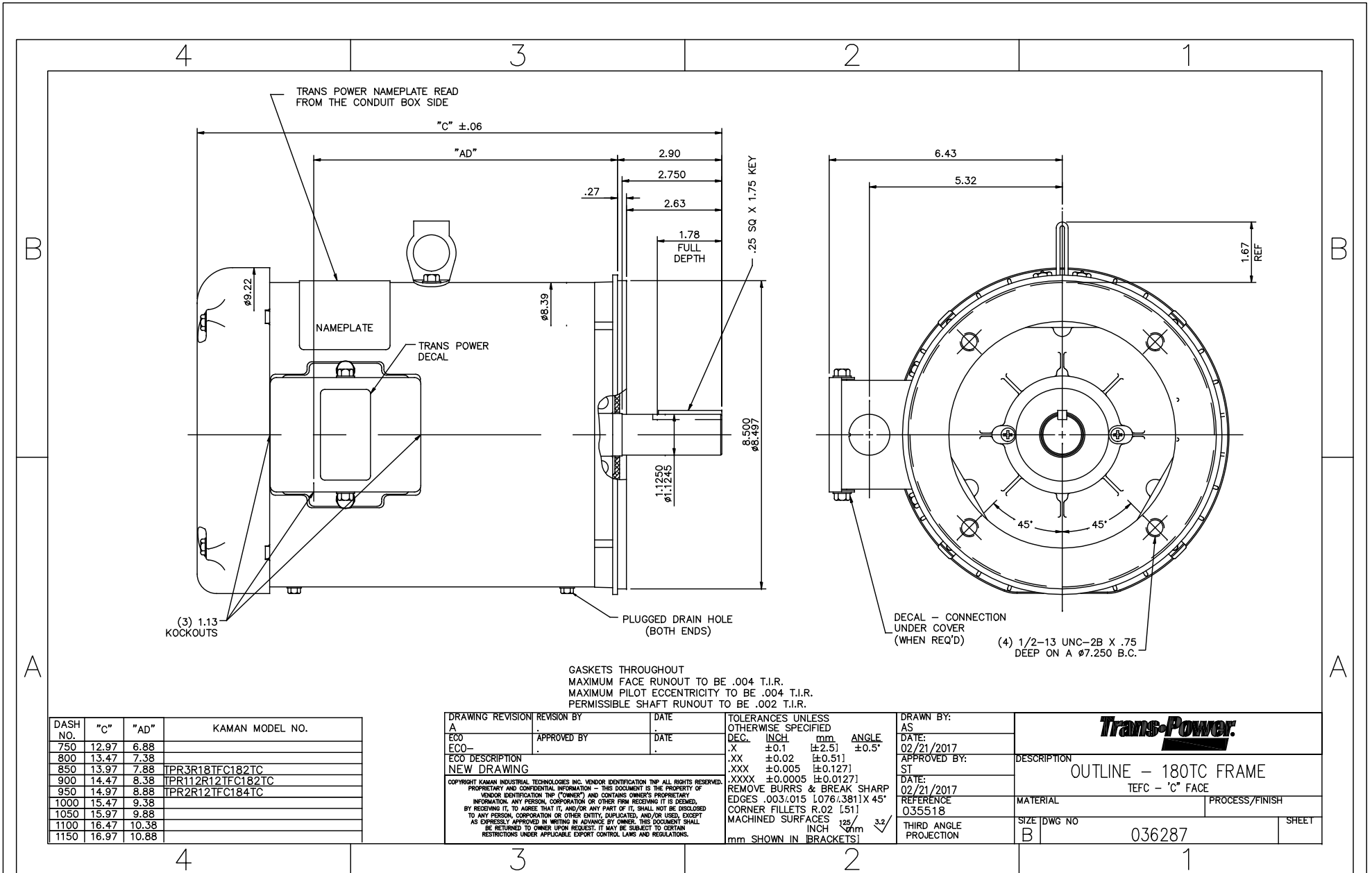
Nameplate Specifications

Phase	3	Output HP	3 & 2 Hp
Output KW	2.2 & 1.5 kW	Voltage	230/460 & 190/380 V
Speed	1760 & 1470 rpm	Service Factor	1.15 & 1.15
Frame	182TC	Enclosure	Totally Enclosed Fan Cooled
Thermal Protection	No Protection	Efficiency	89.5 %
Ambient Temperature	40 °C	Frequency	60 & 50 Hz
Current	7.8/3.9 & 7/3.5 A	Power Factor	80.5
Duty	Continuous	Insulation Class	F
Design Code	B	KVA Code	K
Drive End Bearing Size	6206	Opp Drive End Bearing Size	6205
UL	Recognized	CSA	Y
CE	Y	IP Code	43
Number of Speeds	1		

Technical Specifications

Electrical Type	Squirrel Cage Inverter Rated	Starting Method	Line Or Inverter
Poles	4	Rotation	Reversible
Resistance Main	6.08 Ohms	Mounting	Round
Motor Orientation	Horizontal	Drive End Bearing	Ball
Opp Drive End Bearing	Ball	Frame Material	Rolled Steel
Shaft Type	T	Assembly/Box Mounting	F1/F2 CAPABLE
Inverter Load	CONSTANT 4:1		
Outline Drawing	036287-850	Connection Drawing	EE7308TP

This is an uncontrolled document once printed or downloaded and is subject to change without notice. Date Created:06/22/2023



DASH NO.	"C"	"AD"	KAMAN MODEL NO.
750	12.97	6.88	
800	13.47	7.38	
850	13.97	7.88	TPR3R18TFC182TC
900	14.47	8.38	TPR112R12TFC182TC
950	14.97	8.88	TPR2R12TFC184TC
1000	15.47	9.38	
1050	15.97	9.88	
1100	16.47	10.38	
1150	16.97	10.88	

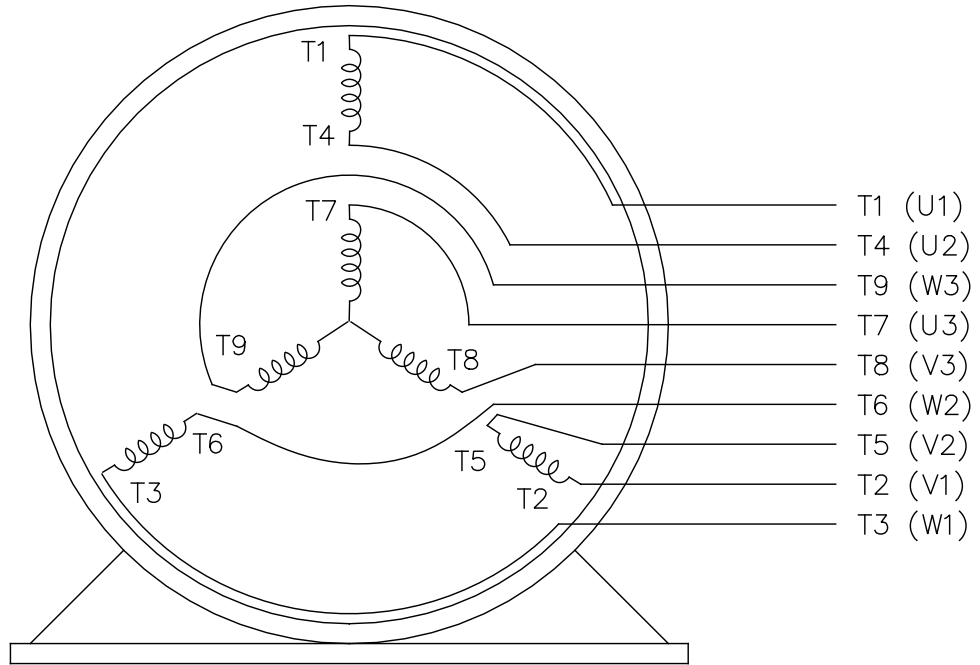
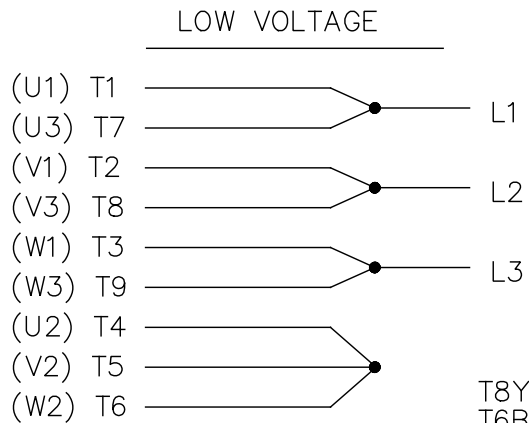
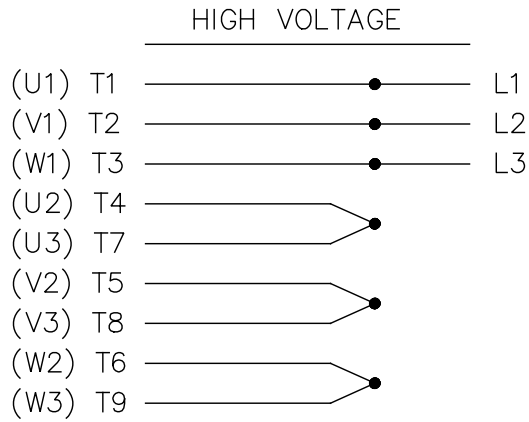
DRAWING REVISION	REVISION BY	DATE
A		
ECO	APPROVED BY	DATE
ECO-		
ECO DESCRIPTION		
NEW DRAWING		
<small>COPYRIGHT KAMAN INDUSTRIAL TECHNOLOGIES INC. VENDOR IDENTIFICATION TNP ALL RIGHTS RESERVED. PROPRIETARY AND CONFIDENTIAL INFORMATION - THIS DOCUMENT IS THE PROPERTY OF VENDOR IDENTIFICATION TNP ("OWNER") AND CONTAINS OWNER'S PROPRIETARY INFORMATION. ANY PERSON, CORPORATION OR OTHER FIRM RECEIVING IT IS DEEMED BY RECEIVING IT, TO AGREE THAT IT, AND/OR ANY PART OF IT, SHALL NOT BE DISCLOSED TO ANY PERSON, CORPORATION OR OTHER ENTITY, DUPLICATED, AND/OR USED, EXCEPT AS EXPRESSLY APPROVED IN WRITING IN ADVANCE BY OWNER. THIS DOCUMENT SHALL BE RETURNED TO OWNER UPON REQUEST. IT MAY BE SUBJECT TO CERTAIN RESTRICTIONS UNDER APPLICABLE EXPORT CONTROL LAWS AND REGULATIONS.</small>		

TOLERANCES UNLESS OTHERWISE SPECIFIED			
DEC.	INCH	mm	ANGLE
.X	±0.1	±2.51	±0.5°
.XX	±0.02	±0.511	
.XXX	±0.005	±0.1271	
.XXXX	±0.0005	±0.01271	
REMOVE BURRS & BREAK SHARP EDGES .003/.015 L.076(.381)X 45° CORNER FILLETS R.02 (.51) MACHINED SURFACES .125/3.2			
	INCH	mm	✓
mm SHOWN IN [BRACKETS]			

DRAWN BY:	AS
DATE:	02/21/2017
APPROVED BY:	ST
DATE:	02/21/2017
REFERENCE:	035518
THIRD ANGLE PROJECTION	

DESCRIPTION	OUTLINE - 180TC FRAME TEFC - 'C' FACE
MATERIAL	PROCESS/FINISH
SIZE DWG NO	036287
B	SHEET

THREE PHASE
DUAL VOLTAGE MOTOR



VIEW OF TERMINAL END

REF.
WINDING DIAGRAM

T8Y, T2Y, T2BL, T4BX, T2EC, T2G
T6BZ, T2B, T6BL, T4AV, T6B, T4B

OPTIONAL CORD
CONNECTION

L1 WHITE
L2 RED
L3 BLACK

DRAWING REVISION	REVISION BY	DATE
ECO	APPROVED BY	DATE
ECO DESCRIPTION NEW DRAWING		
<small>COPYRIGHT KAMAN INDUSTRIAL TECHNOLOGIES INC. VENDOR IDENTIFICATION TNP ALL RIGHTS RESERVED. PROPRIETARY AND CONFIDENTIAL INFORMATION - THIS DOCUMENT IS THE PROPERTY OF VENDOR IDENTIFICATION TNP ("OWNER") AND CONTAINS OWNER'S PROPRIETARY INFORMATION. ANY PERSON, CORPORATION OR OTHER FIRM RECEIVING IT IS DEEMED, BY RECEIVING IT, TO AGREE THAT IT, AND/OR ANY PART OF IT, SHALL NOT BE DISCLOSED TO ANY PERSON, CORPORATION OR OTHER ENTITY, DUPLICATED, AND/OR USED, EXCEPT AS EXPRESSLY APPROVED IN WRITING IN ADVANCE BY OWNER. THIS DOCUMENT SHALL BE RETURNED TO OWNER UPON REQUEST. IT MAY BE SUBJECT TO CERTAIN RESTRICTIONS UNDER APPLICABLE EXPORT CONTROL LAWS AND REGULATIONS.</small>		

TOLERANCES UNLESS OTHERWISE SPECIFIED			
DEC.	mm	INCH	ANGLE
.X	±2.5	[±0.11]	±0.5°
.XX	±0.51	[±0.021]	
.XXX	±0.127	[±0.0051]	
.XXXX	±0.0127	[±0.00051]	
REMOVE BURRS & BREAK SHARP EDGES .08/.38 [003/.015] X 45°			
CORNER FILLETS R.51 [02]			
MACHINED SURFACES INCH $\sqrt[125]{mm}$ $\sqrt[3.2]{}$			
INCH SHOWN IN [BRACKETS]			

DRAWN BY: AS
DATE: 02/20/2017
APPROVED BY: ST
DATE: 02/20/2017
REFERENCE EE7308
THIRD ANGLE PROJECTION

Trans-Power	
DESCRIPTION CONNECTION DIAGRA 3 PHASE - UAL VOLTAGE	
MATERIAL	PROCESS/FINISH
SIZE DWG NO A EE7308TP	SHEET 1