

# PRODUCT INFORMATION PACKET



Model No: TO187  
Catalog No: TO187  
150 HP General Purpose Motor, 3 phase, 1200 RPM, 460 V, 447T Frame, ODP  
General Purpose Motors



Regal and Century are trademarks of Regal Rexnord Corporation or one of its affiliated companies.  
©2021 Regal Rexnord Corporation, All Rights Reserved. MC017097E





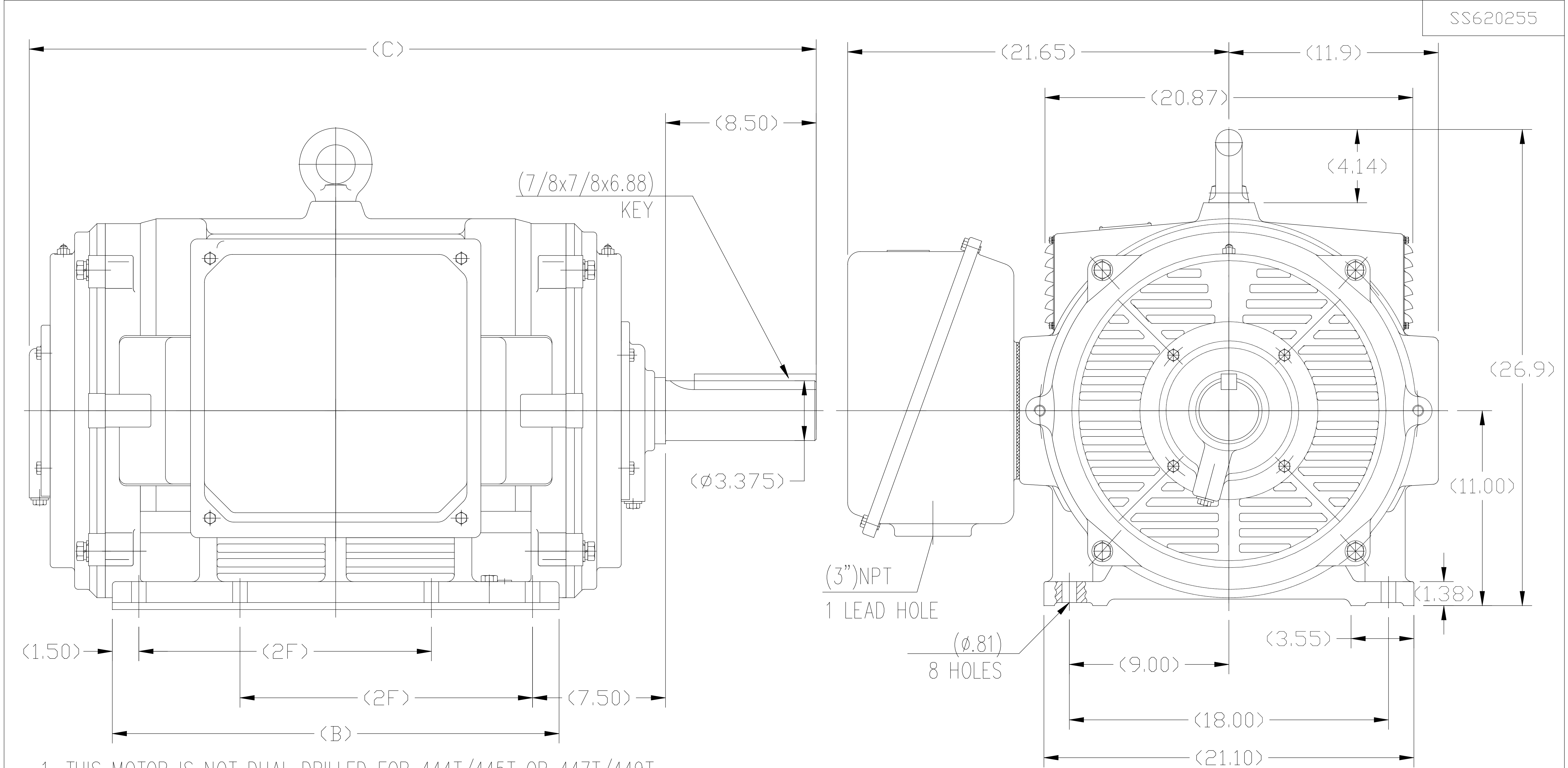
### Nameplate Specifications

Output HP	150 Hp	Output KW	111.9 kW
Frequency	60 Hz	Voltage	460 V
Current	172 A	Speed	1190 rpm
Service Factor	1.15	Phase	3
Duty	Continuous	Insulation Class	F
Frame	447T	Enclosure	Drip Proof
Thermal Protection	None	Ambient Temperature	40 °C
UL	Recognized	CSA	Y
CE	Y	Number of Speeds	1


### Technical Specifications

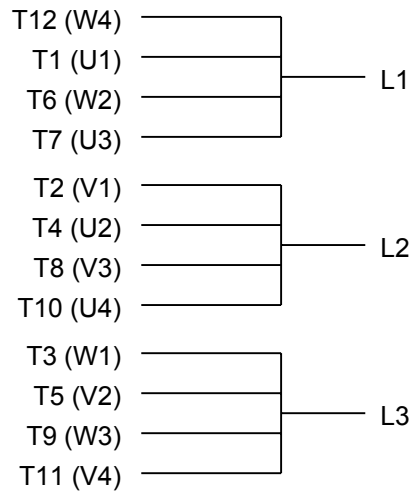
Electrical Type	Three Phase	Starting Method	Across The Line
Poles	6	Rotation	Reversible
Mounting	Rigid Base	Drive End Bearing	Ball
Opp Drive End Bearing	Ball	Frame Material	Cast Iron
Shaft Type	Keyed	Overall Length	49.69 in
Frame Length	31.90 in	Shaft Diameter	3.375 in
Shaft Extension	8.5 in		
Connection Drawing	A-EE7308AA	Outline Drawing	SS620255

This is an uncontrolled document once printed or downloaded and is subject to change without notice. Date Created:10/12/2021

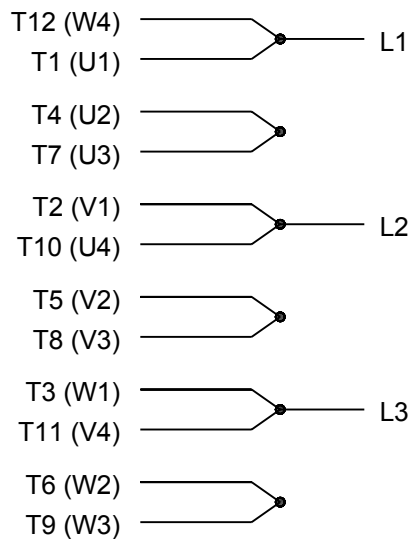


444T	44.57	25.20	14.50
445T	44.57	25.20	16.50
447T	49.69	30.32	20.00
449T	49.69	30.32	25.00
Frame	C	B	2F

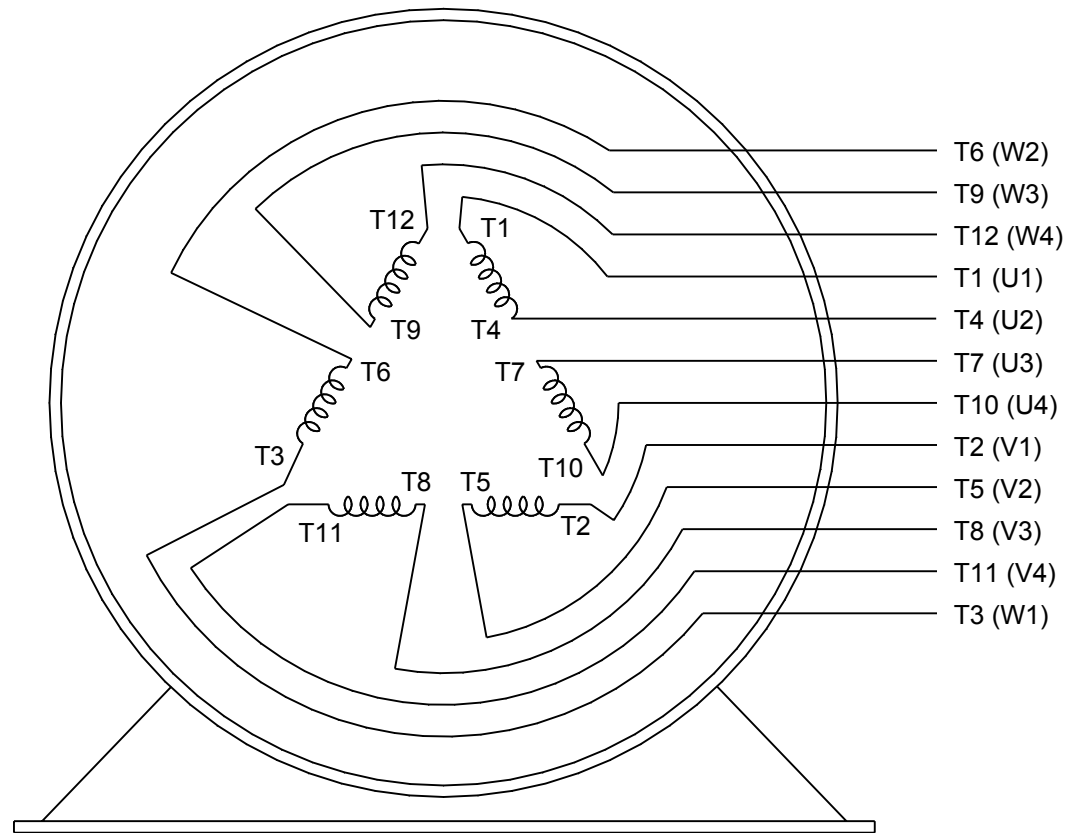
				TOLERANCES UNLESS SPECIFIED		 <b>REGAL-BELOIT CORPORATION</b>		DRAWN ZYH 02-21-2010		
				DEC.	INCHES			CHK HZJ 02-21-2010		
				.X	±.1	TITLE 444/445/447/449T FR-ODP-CAST IRON		APPD CL 02-21-2010		
				.XX	±.03			SCALE 6=32		
G	UPDATED DRAWING PER MARK-UP ECO-0108274		WGJ 10-7-16	EMH .XXX	±.005	MAT'L.		REF		
A	2 leads hole change to 1		CL 2010-9-8	.XXXX	±.0005			FMF HWADA		
NO.	REVISION		BY & DATE	CHK ANG	±1/2	FINISH		PREV		
THIS DRAWING IN DESIGN AND DETAIL IS OUR PROPERTY AND MUST NOT BE USED EXCEPT IN CONNECTION WITH OUR WORK ALL RIGHTS OF DESIGN AND INVENTION ARE RESERVED THIS IS AN ELECTRONICALLY GENERATED DOCUMENT - DO NOT SCALE THIS PRINT				RFP		CAD FILE SS620255		SIZE	DRAWING NO.	REV.
				DIST				B	SS620255	G



## LOW VOLTAGE




## HIGH VOLTAGE



## VIEW OF TERMINAL END

DRAWING REVISION K	REVISION BY AJW	DATE 07-17-2015
ECO ECO-0081632	APPROVED BY T. VUE	DATE 07-17-2015
ECO DESCRIPTION REV'D IEC MARKINGS PER IEC 60034-8		
COPYRIGHT REGAL BELOIT AMERICA, INC. ALL RIGHTS RESERVED. PROPRIETARY AND CONFIDENTIAL INFORMATION - THIS DOCUMENT IS THE PROPERTY OF REGAL BELOIT AMERICA, INC. ("OWNER") AND CONTAINS OWNER'S PROPRIETARY INFORMATION. ANY PERSON, CORPORATION OR OTHER FIRM RECEIVING IT IS DEEMED, BY RECEIVING IT, TO AGREE THAT IT, AND/OR ANY PART OF IT, SHALL NOT BE DISCLOSED TO ANY PERSON, CORPORATION OR OTHER ENTITY, DUPLICATED, AND/OR USED, EXCEPT AS EXPRESSLY APPROVED IN WRITING IN ADVANCE BY OWNER. THIS DOCUMENT SHALL BE RETURNED TO OWNER UPON REQUEST. IT MAY BE SUBJECT TO CERTAIN RESTRICTIONS UNDER APPLICABLE EXPORT CONTROL LAWS AND REGULATIONS.		

DRAWN BY LZ	THIRD ANGLE PROJECTION
DATE 01-12-1994	
APPROVED BY GK	
DATE 01-14-1994	
REFERENCE	

 Regal Beloit America, Inc.		
DESCRIPTION CONN DIAGRAM-EXTERNAL 3Ø-2/1 DELTA-12 LEADS		
MATERIAL	PROCESS/FINISH	
SIZE A	DRAWING NUMBER EE7308AA	SHEET 1 OF 1