

# PRODUCT INFORMATION PACKET



Model No: TO185  
Catalog No: TO185  
125 HP General Purpose Motor, 3 phase, 1800 RPM, 575 V, 405T Frame, ODP  
General Purpose Motors



Regal and Century are trademarks of Regal Rexnord Corporation or one of its affiliated companies.  
©2021 Regal Rexnord Corporation, All Rights Reserved. MC017097E





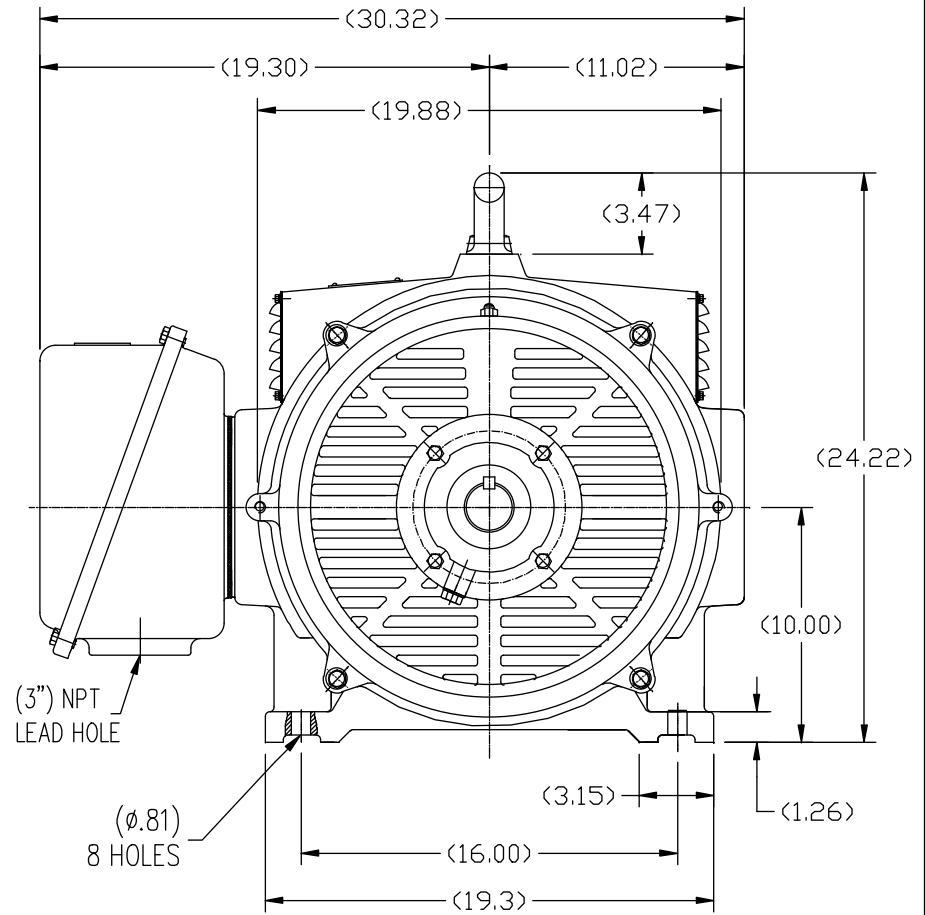
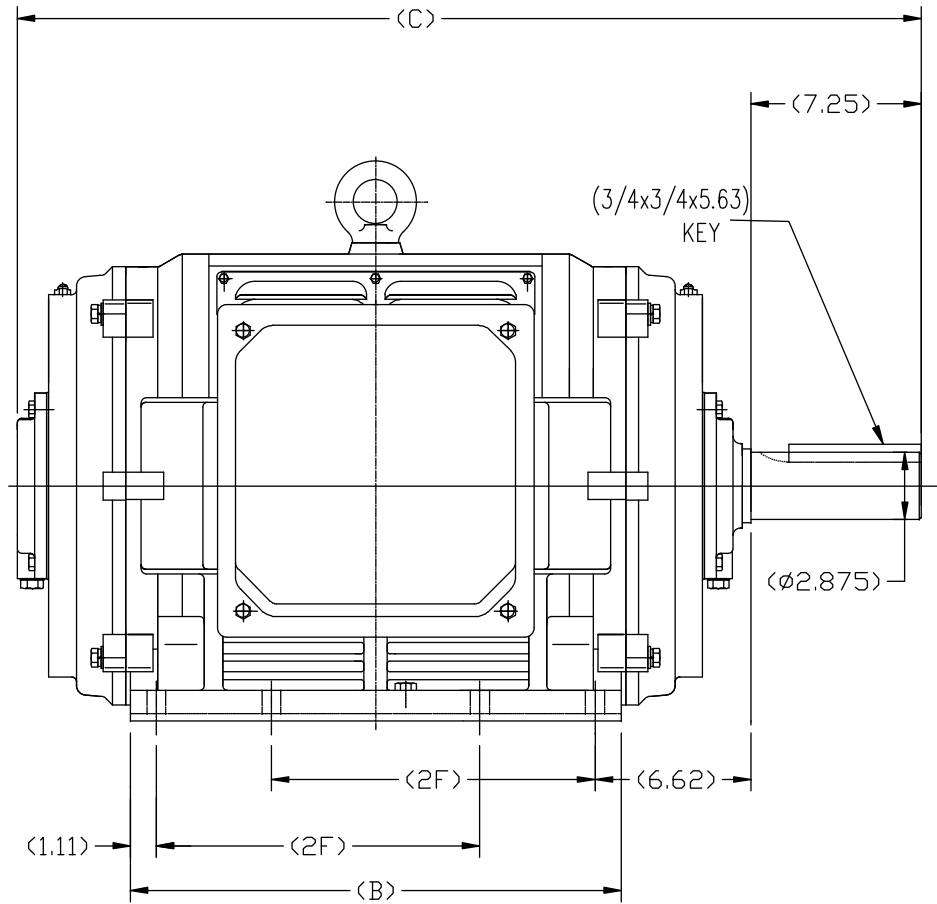
### Nameplate Specifications

Output HP	125 Hp	Output KW	93.3 kW
Frequency	60 Hz	Voltage	575 V
Current	112 A	Speed	1788 rpm
Service Factor	1.15	Phase	3
Duty	Continuous	Insulation Class	F
Frame	405T	Enclosure	Open Drip Proof
Thermal Protection	None	Ambient Temperature	40 °C
UL	Recognized	CSA	Y
CE	Y	Number of Speeds	1

### Technical Specifications

Electrical Type	POLYPHASE	Starting Method	Across The Line
Poles	4	Rotation	Reversible
Mounting	Rigid Base	Drive End Bearing	Ball
Opp Drive End Bearing	Ball	Frame Material	Cast Iron
Shaft Type	Keyed	Overall Length	38.78 in
Frame Length	21.25 in	Shaft Diameter	2.875 in
Shaft Extension	7.25 in		
Outline Drawing	SS620253	Connection Drawing	A-EE7300U

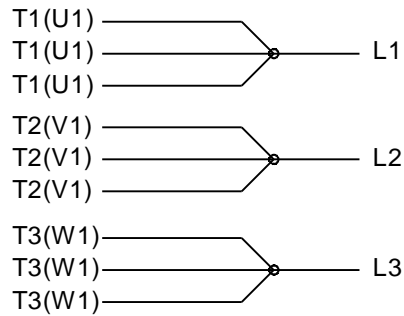
This is an uncontrolled document once printed or downloaded and is subject to change without notice. Date Created:10/12/2021



404T	37.20	19.29	12.25
405T	38.78	20.87	13.75
FRAME	C	B	2F

				TOLERANCES UNLESS SPECIFIED		REGAL REGAL-BELOIT CORPORATION	DRAWN HZJ 03-04-2010	
				DEC.	INCHES		CHK	ZYH 03-04-2010
				.X	±.1	TITLE OUTLINE 404/405T FR-ODP-CAST IRON	APPD	CL 03-04-2010
				.XX	±.03		SCALE	1=75
				.XXX	±.005		REF	
				.XXXX	±.0005		FMF	HWADA
NO.	REVISION	BY & DATE	CHK	ANG	± 1/21	FINISH	PREV	
THIS DRAWING IN DESIGN AND DETAIL IS OUR PROPERTY AND MUST NOT BE USED EXCEPT IN CONNECTION WITH OUR WORK ALL RIGHTS OF DESIGN AND INVENTION ARE RESERVED THIS IS AN ELECTRONICALLY GENERATED DOCUMENT - DO NOT SCALE THIS PRINT						RFP	CAD FILE	SS620253
						DIST	SIZE	DRAWING NO.
							B	SS620253
								REV.

## IF MOTOR HAS 9 LEADS



## IF MOTOR HAS 6 LEADS



A-9806 DECAL IF CALLED FOR

## IF MOTOR HAS 12 LEADS



VIEW OF TERMINAL END

DRAWING REVISION L	REVISION BY AJW	DATE 05-04-2015	TOLERANCES UNLESS OTHERWISE SPECIFIED:  <div><div>DEC.</div><div>INCH</div><div>mm</div><div>ANGLE</div></div> <div><div>.X</div><div>±0.1</div><div>[±2.5]</div><div>±7° 30"</div></div> <div><div>.XX</div><div>±0.02</div><div>[±0.51]</div></div> <div><div>XXX</div><div>±0.005</div><div>[±0.127]</div></div> <div><div>.XXXX</div><div>±0.0005</div><div>[±0.0127]</div></div> <div>REMOVE BURRS &amp; BREAK SHARP EDGES: .003/.015 [.076/.381] X 45° CORNER FILLETS: R.02 [.51] MACHINED SURFACES: 200/5.1 INCH mm SHOWN IN [BRACKETS]</div>				DRAWN BY DRS	<div><div>REGAL™</div><div>Regal Beloit America, Inc.</div></div>			
ECO ECO-0077067	APPROVED BY EWH	DATE 05-05-2015					DATE 09-27-1996				
ECO DESCRIPTION UPDATED TO SOLIDWORKS			DESCRIPTION CONN DIAGRAM-EXTERNAL 3Ø SINDLE VOLTAGE								
COPYRIGHT REGAL BELOIT AMERICA, INC. ALL RIGHTS RESERVED. PROPRIETARY AND CONFIDENTIAL INFORMATION - THIS DOCUMENT IS THE PROPERTY OF REGAL BELOIT AMERICA, INC. ("OWNER") AND CONTAINS OWNER'S PROPRIETARY INFORMATION. ANY PERSON, CORPORATION OR OTHER FIRM RECEIVING IT IS DEEMED, BY RECEIVING IT, TO AGREE THAT IT, AND/OR ANY PART OF IT, SHALL NOT BE DISCLOSED TO ANY PERSON, CORPORATION OR OTHER ENTITY, DUPLICATED, AND/OR USED, EXCEPT AS EXPRESSLY APPROVED IN WRITING IN ADVANCE BY OWNER. THIS DOCUMENT SHALL BE RETURNED TO OWNER UPON REQUEST. IT MAY BE SUBJECT TO CERTAIN RESTRICTIONS UNDER APPLICABLE EXPORT CONTROL LAWS AND REGULATIONS.											
			APPROVED BY GK								
			DATE 09-30-1996								
			REFERENCE		MATERIAL		PROCESS/FINISH				
			THIRD ANGLE PROJECTION		SIZE A		DRAWING NUMBER EE7300U		SHEET 1 OF 1		