

PRODUCT INFORMATION PACKET



Model No: TO183
Catalog No: TO183
125 HP General Purpose Motor, 3 phase, 1800 RPM, 230/460 V, 405T Frame, ODP
General Purpose Motors



Regal and Century are trademarks of Regal Rexnord Corporation or one of its affiliated companies.
©2021 Regal Rexnord Corporation, All Rights Reserved. MC017097E





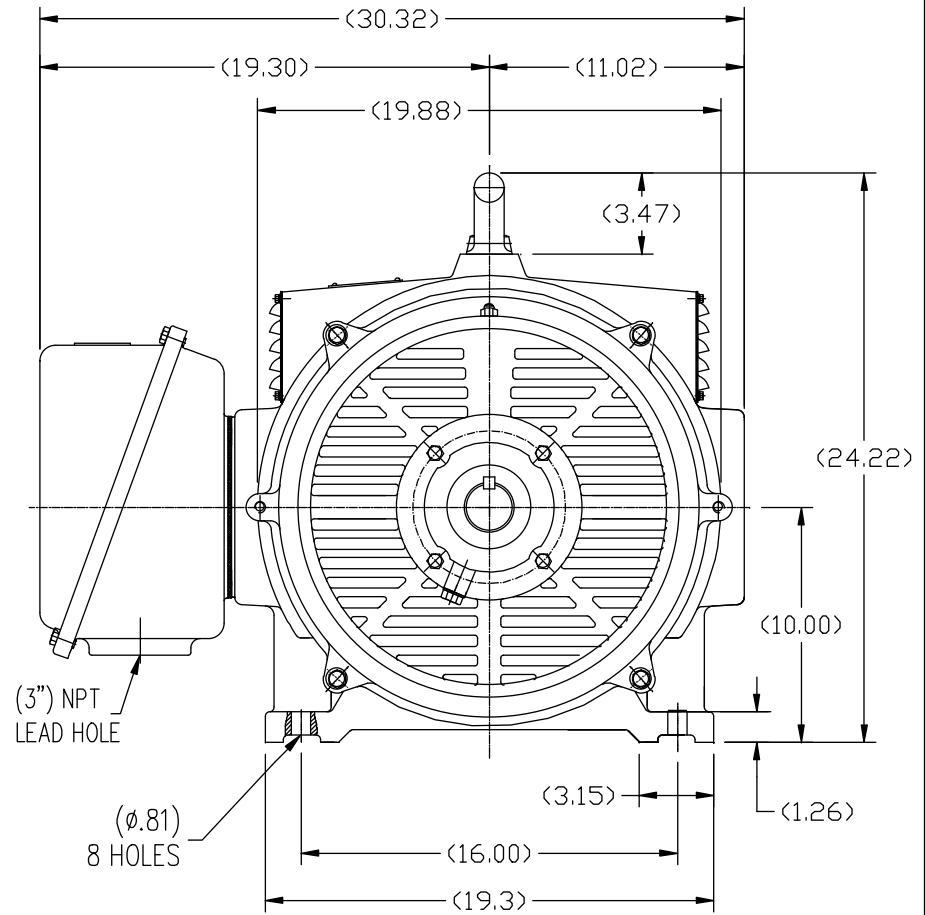
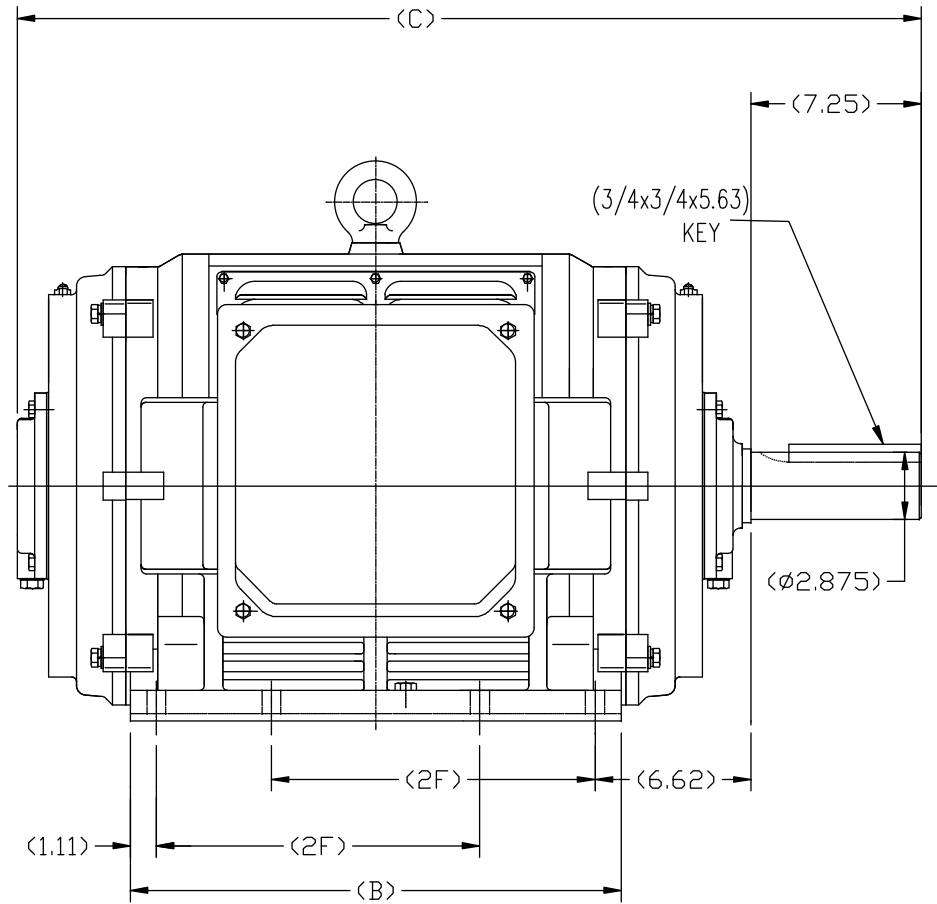
Nameplate Specifications

Output HP	125 Hp	Output KW	93.3 kW
Frequency	60 Hz	Voltage	230/460 V
Current	140 A	Speed	1788 rpm
Service Factor	1.15	Phase	3
Duty	Continuous	Insulation Class	F
Frame	405T	Enclosure	Drip Proof
Thermal Protection	None	Ambient Temperature	40 °C
UL	Recognized	CSA	Y
CE	Y	Number of Speeds	1

Technical Specifications

Electrical Type	POLYPHASE	Starting Method	Across The Line
Poles	4	Rotation	Reversible
Mounting	Rigid Base	Drive End Bearing	Ball
Opp Drive End Bearing	Ball	Frame Material	Cast Iron
Shaft Type	Keyed	Overall Length	38.78 in
Frame Length	21.25 in	Shaft Diameter	2.875 in
Shaft Extension	7.25 in		
Connection Drawing	A-EE7308AA	Outline Drawing	SS620253

This is an uncontrolled document once printed or downloaded and is subject to change without notice. Date Created:10/12/2021



404T	37.20	19.29	12.25
405T	38.78	20.87	13.75
FRAME	C	B	2F

TOLERANCES UNLESS SPECIFIED				REGAL REGAL-BELOIT CORPORATION		DRAWN HZJ 03-04-2010	
DEC.	INCHES					CHK	ZYH 03-04-2010
.X	±.1			TITLE		APPD	CL 03-04-2010
.XX	±.03			OUTLINE		SCALE	1=75
.XXX	±.005			404/405T FR-ODP-CAST IRON		REF	
.XXXX	±.0005			MAT'L.		FMF	HWADA
NO.	REVISION	BY & DATE	CHK	ANG	FINISH	PREV	
THIS DRAWING IN DESIGN AND DETAIL IS OUR PROPERTY AND MUST NOT BE USED EXCEPT IN CONNECTION WITH OUR WORK ALL RIGHTS OF DESIGN AND INVENTION ARE RESERVED THIS IS AN ELECTRONICALLY GENERATED DOCUMENT - DO NOT SCALE THIS PRINT				RFP	CAD FILE	SS620253	SIZE
				DIST			DRAWING NO.
							B
							SS620253
							REV.



LOW VOLTAGE



HIGH VOLTAGE



VIEW OF TERMINAL END

DRAWING REVISION K	REVISION BY AJW	DATE 07-17-2015
ECO ECO-0081632	APPROVED BY T. VUE	DATE 07-17-2015
ECO DESCRIPTION REV'D IEC MARKINGS PER IEC 60034-8		
COPYRIGHT REGAL BELOIT AMERICA, INC. ALL RIGHTS RESERVED. PROPRIETARY AND CONFIDENTIAL INFORMATION - THIS DOCUMENT IS THE PROPERTY OF REGAL BELOIT AMERICA, INC. ("OWNER") AND CONTAINS OWNER'S PROPRIETARY INFORMATION. ANY PERSON, CORPORATION OR OTHER FIRM RECEIVING IT IS DEEMED, BY RECEIVING IT, TO AGREE THAT IT, AND/OR ANY PART OF IT, SHALL NOT BE DISCLOSED TO ANY PERSON, CORPORATION OR OTHER ENTITY, DUPLICATED, AND/OR USED, EXCEPT AS EXPRESSLY APPROVED IN WRITING IN ADVANCE BY OWNER. THIS DOCUMENT SHALL BE RETURNED TO OWNER UPON REQUEST. IT MAY BE SUBJECT TO CERTAIN RESTRICTIONS UNDER APPLICABLE EXPORT CONTROL LAWS AND REGULATIONS.		

DRAWN BY LZ	THIRD ANGLE PROJECTION
DATE 01-12-1994	
APPROVED BY GK	
DATE 01-14-1994	
REFERENCE	

 Regal Beloit America, Inc.		
DESCRIPTION CONN DIAGRAM-EXTERNAL 3Ø-2/1 DELTA-12 LEADS		
MATERIAL	PROCESS/FINISH	
SIZE A	DRAWING NUMBER EE7308AA	SHEET 1 OF 1