

PRODUCT INFORMATION PACKET



Model No: TO181RS
Catalog No: TO181RS
100 HP General Purpose Motor, 3 phase, 3600 RPM, 230/460 V, 365TS Frame, ODP
General Purpose Motors



Regal and Century are trademarks of Regal Rexnord Corporation or one of its affiliated companies.
©2021 Regal Rexnord Corporation, All Rights Reserved. MC017097E





Nameplate Specifications

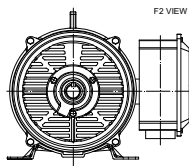
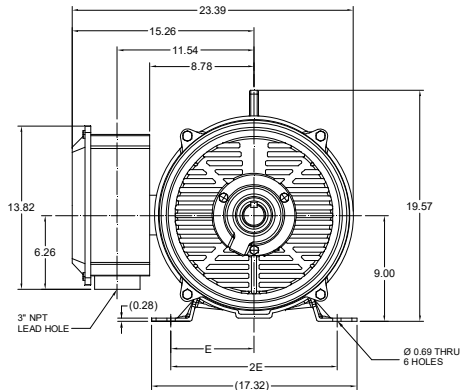
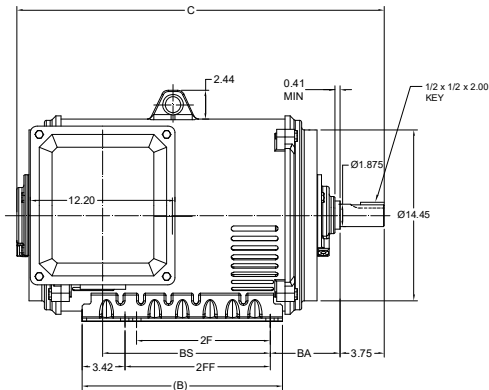
Output HP	100 Hp	Output KW	74.6 kW
Frequency	60 Hz	Voltage	230/460 V
Current	227/114 A	Speed	3568 rpm
Service Factor	1.15	Phase	3
Duty	Continuous	Insulation Class	F
Frame	365TS	Enclosure	Drip Proof
Thermal Protection	No	Ambient Temperature	40 °C
UL	Recognized	CSA	Y
CE	Y	Number of Speeds	1

Technical Specifications

Electrical Type	Three Phase	Starting Method	Across The Line
Poles	2	Rotation	Reversible
Mounting	Rigid Base	Drive End Bearing	Ball
Opp Drive End Bearing	Ball	Frame Material	Rolled Steel
Shaft Type	TS	Overall Length	31.14 in
Frame Length	18.89 in	Shaft Diameter	1.875 in
Shaft Extension	3.75 in		
Outline Drawing	SS620748	Connection Drawing	EE7308AA

This is an uncontrolled document once printed or downloaded and is subject to change without notice. Date Created:10/12/2021

DASH NO.	B	C	E	2E	2F	2FF	BA	BS	MOUNTING	FRAME
100	16.93	29.57	7.00	14.00	11.25	12.25	5.88	14.09	F1 OR F2	364TS
200		31.14						15.67		365TS



DRAWING REVISION B	REVISION BY JP	REV DATE / © DATE 27/04/2021
ECO CR-0002338	APPROVED BY GNK	DATE 27/04/2021
ECO DESCRIPTION DRAWING UPDATED		
<small> COPYRIGHT (P) & REGISTRATION (P) REGAL BELOIT AMERICA, INC. ALL RIGHTS RESERVED. IMPRINT (P) & COMPARATIVE INFORMATION: THIS DOCUMENT IS THE PROPERTY OF REGAL BELOIT AMERICA, INC. (P) OWNER AND CONTAINS OWNER'S PROPRIETARY INFORMATION. ANY PERSONAL INFORMATION OR OTHER DATA RECEIVED IS SUBJECT TO ANY PERSONAL INFORMATION (P) OWNER'S DISCRETION. NO PART OF IT SHALL NOT BE DISCLOSED AS EXCEPT APPROVED IN WRITING IN ADVANCE BY OWNER. THIS DOCUMENT SHALL BE RETURNED TO OWNER UPON REQUEST. IT MAY BE SUBJECT TO CERTAIN INSTRUCTIONS UNDER APPLICABLE EXPORT CONTROL LAWS AND REGULATIONS. </small>		

PRIMARY DIMENSIONS ARE INCH
MM DIMENSIONS IN (BRACKET)
ARE FOR REFERENCE ONLY

DRAWN BY Xiaowei zhu		DESCRIPTION OUTLINE 364/365TS FR-NEMA-ODP-RS	
DATE		MATERIAL	PROCESS/FINISH
APPROVED BY		SIZE B	DRAWING NUMBER SS620748
DATE			SHEET 1 OF 1



LOW VOLTAGE



HIGH VOLTAGE



VIEW OF TERMINAL END

DRAWING REVISION K	REVISION BY AJW	DATE 07-17-2015
ECO ECO-0081632	APPROVED BY T. VUE	DATE 07-17-2015
ECO DESCRIPTION REV'D IEC MARKINGS PER IEC 60034-8		
COPYRIGHT REGAL BELOIT AMERICA, INC. ALL RIGHTS RESERVED. PROPRIETARY AND CONFIDENTIAL INFORMATION - THIS DOCUMENT IS THE PROPERTY OF REGAL BELOIT AMERICA, INC. ("OWNER") AND CONTAINS OWNER'S PROPRIETARY INFORMATION. ANY PERSON, CORPORATION OR OTHER FIRM RECEIVING IT IS DEEMED, BY RECEIVING IT, TO AGREE THAT IT, AND/OR ANY PART OF IT, SHALL NOT BE DISCLOSED TO ANY PERSON, CORPORATION OR OTHER ENTITY, DUPLICATED, AND/OR USED, EXCEPT AS EXPRESSLY APPROVED IN WRITING IN ADVANCE BY OWNER. THIS DOCUMENT SHALL BE RETURNED TO OWNER UPON REQUEST. IT MAY BE SUBJECT TO CERTAIN RESTRICTIONS UNDER APPLICABLE EXPORT CONTROL LAWS AND REGULATIONS.		

DRAWN BY LZ	THIRD ANGLE PROJECTION
DATE 01-12-1994	
APPROVED BY GK	
DATE 01-14-1994	
REFERENCE	

 Regal Beloit America, Inc.		
DESCRIPTION CONN DIAGRAM-EXTERNAL 3Ø-2/1 DELTA-12 LEADS		
MATERIAL	PROCESS/FINISH	
SIZE A	DRAWING NUMBER EE7308AA	SHEET 1 OF 1