

# PRODUCT INFORMATION PACKET



Model No: TO163RS

Catalog No: TO163RS

50 HP General Purpose Motor, 3 phase, 3600 RPM, 208-230/460 V, 324T Frame, ODP  
General Purpose Motors



Regal and Century are trademarks of Regal Rexnord Corporation or one of its affiliated companies.  
©2021 Regal Rexnord Corporation, All Rights Reserved. MC017097E





### Nameplate Specifications

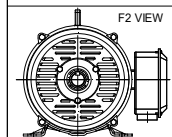
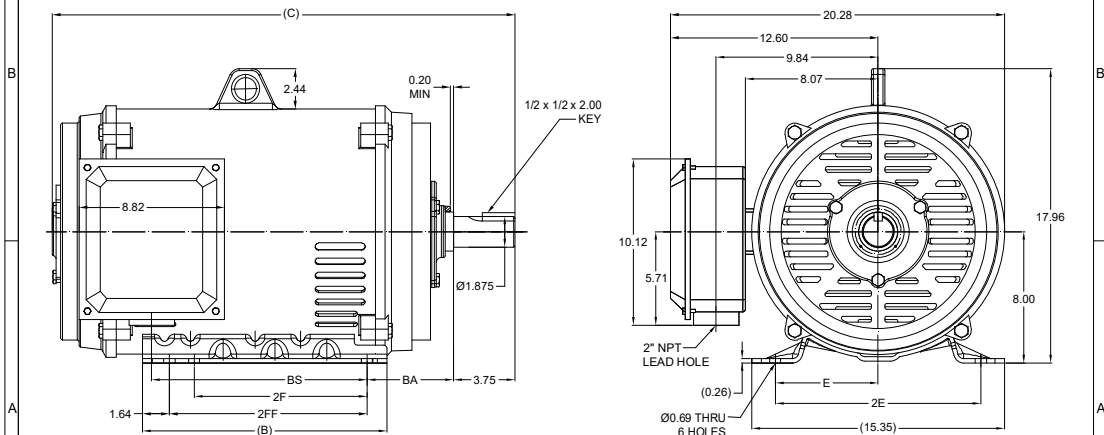
Output HP	50 Hp	Output KW	37.3 kW
Frequency	60 Hz	Voltage	208-230/460 V
Current	127-115/57.5 A	Speed	3565 rpm
Service Factor	1.15	Phase	3
Duty	Continuous	Insulation Class	F
Frame	324T	Enclosure	Drip Proof
Thermal Protection	None	Ambient Temperature	40 °C
UL	Recognized	CSA	Y
CE	Y	Number of Speeds	1

### Technical Specifications

Electrical Type	Three Phase	Starting Method	Across The Line
Poles	2	Rotation	Reversible
Mounting	Rigid Base	Drive End Bearing	Ball
Opp Drive End Bearing	Ball	Frame Material	Rolled Steel
Shaft Type	TS	Overall Length	27.05 in
Frame Length	14.56 in	Shaft Diameter	1.875 in
Shaft Extension	3.75 in		
Outline Drawing	SS620744	Connection Drawing	EE7308AA



This is an uncontrolled document once printed or downloaded and is subject to change without notice. Date Created:10/07/2021

DASH NO.	B	C	E	2E	2F	2FF	BA	BS	MOUNTING	FRAME
100	14.85	27.05	6.25	12.50	10.50	12.00	5.25	11.90	F1 OR F2	324TS
200		28.23						13.08		326TS



DRAWING REVISION ECO CR-0001470	REVISION BY BISWA APPROVED BY GNK	REV DATE/ E DATE 04/03/2021 04/03/2021
DRAWING UPDATED		
<small>           COPYRIGHT (P) &amp; REGISTRATION (R) BELLOIT AMERICA, INC. ALL RIGHTS RESERVED.            INVENTOR: TONY AND CHRISTOPHER, INFORMATION: THIS DOCUMENT IS THE PROPERTY OF            REGAL BELLOIT AMERICA, INC. (OWNER) AND CONTAINS OWNER'S PROPRIETARY            INFORMATION. ANY PERSONAL INFORMATION ON IT AND/OR REPRODUCING IT IS            PROHIBITED. IT IS AGREED THAT IT AND/OR ANY PART OF IT SHALL NOT BE DISCLOSED            TO ANY PERSON, CORPORATION OR OTHER ENTITY, INDIVIDUAL OR LEGAL ENTITY,            AS EXPRESSLY APPROVED IN WRITING IN ADVANCE BY OWNER. THIS DOCUMENT SHALL            BE RETURNED TO OWNER UPON REQUEST. IT MAY BE SUBJECT TO CERTAIN            INSTRUCTIONS UNDER APPLICABLE EXPORT CONTROL LAWS AND REGULATIONS.         </small>		

PRIMARY DIMENSIONS ARE INCH  
 (MM DIMENSIONS IN [BRACKETS])  
 ARE FOR REFERENCE ONLY

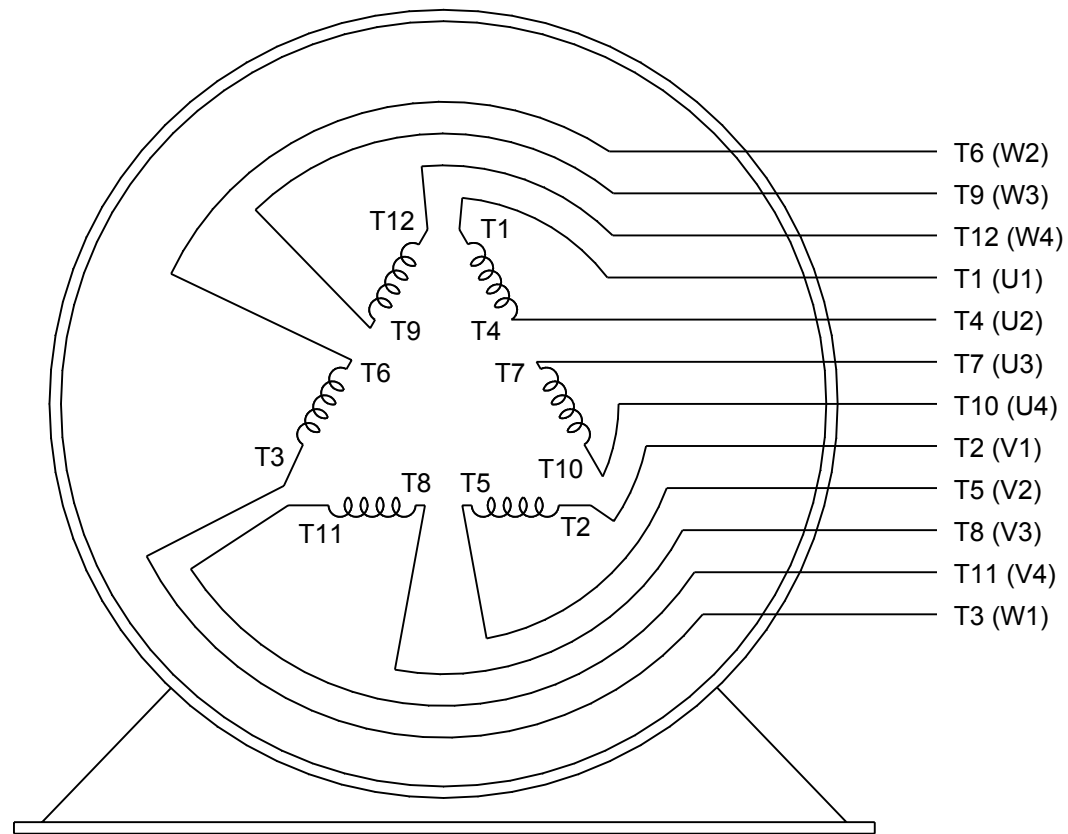
DRAWN BY XZ	 Regal Beloit America, Inc.		
DATE 25/02/2016	DESCRIPTION  OUTLINE 324/326TS FR NEMA COP RS		
APPROVED BY			
DATE	MATERIAL		PROCESS/FINISH
REFERENCE	SIZE B	DRAWING NUMBER SS620744	
THIRD ANGLE PROJECTION 			SHEET 1 OF 1



## LOW VOLTAGE



## HIGH VOLTAGE



## VIEW OF TERMINAL END

DRAWING REVISION K	REVISION BY AJW	DATE 07-17-2015
ECO ECO-0081632	APPROVED BY T. VUE	DATE 07-17-2015
ECO DESCRIPTION REV'D IEC MARKINGS PER IEC 60034-8		
<small>COPYRIGHT REGAL BELOIT AMERICA, INC. ALL RIGHTS RESERVED.          PROPRIETARY AND CONFIDENTIAL INFORMATION - THIS DOCUMENT IS THE PROPERTY OF          REGAL BELOIT AMERICA, INC. ("OWNER") AND CONTAINS OWNER'S PROPRIETARY          INFORMATION. ANY PERSON, CORPORATION OR OTHER FIRM RECEIVING IT IS DEEMED,          BY RECEIVING IT, TO AGREE THAT IT, AND/OR ANY PART OF IT, SHALL NOT BE DISCLOSED          TO ANY PERSON, CORPORATION OR OTHER ENTITY, DUPLICATED, AND/OR USED, EXCEPT          AS EXPRESSLY APPROVED IN WRITING IN ADVANCE BY OWNER. THIS DOCUMENT SHALL          BE RETURNED TO OWNER UPON REQUEST. IT MAY BE SUBJECT TO CERTAIN          RESTRICTIONS UNDER APPLICABLE EXPORT CONTROL LAWS AND REGULATIONS.</small>		

DRAWN BY LZ	DATE 01-12-1994
APPROVED BY GK	DATE 01-14-1994
REFERENCE	
THIRD ANGLE PROJECTION	

Regal Beloit America, Inc.		
DESCRIPTION <b>CONN DIAGRAM-EXTERNAL</b> 3Ø-2/1 DELTA-12 LEADS		
MATERIAL	PROCESS/FINISH	
SIZE A	DRAWING NUMBER EE7308AA	SHEET 1 OF 1