

# PRODUCT INFORMATION PACKET



Model No: TO139

Catalog No: TO139

General Purpose Motor, 20 HP, 3 Ph, 60 Hz, 208-230/460 V, 1200 RPM, 286T Frame, DP



Regal and Century are trademarks of Regal Rexnord Corporation or one of its affiliated companies.

©2022 Regal Rexnord Corporation, All Rights Reserved. MC017097E





### Nameplate Specifications

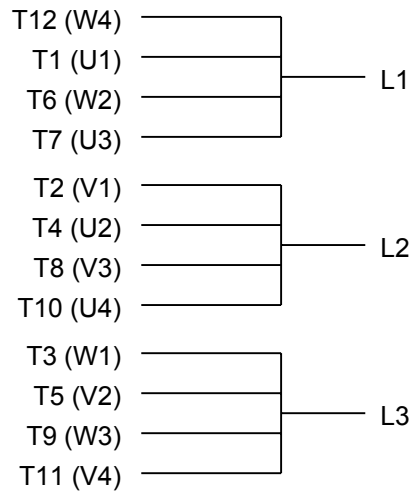
|                    |               |                     |               |
|--------------------|---------------|---------------------|---------------|
| Output HP          | 20 Hp         | Output KW           | 14.9 kW       |
| Frequency          | 60 Hz         | Voltage             | 208-230/460 V |
| Current            | 60-54/27 A    | Speed               | 1182 rpm      |
| Service Factor     | 1.15          | Phase               | 3             |
| Duty               | Continuous    | Insulation Class    | F             |
| Frame              | 286T          | Enclosure           | Drip Proof    |
| Thermal Protection | No Protection | Ambient Temperature | 40 °C         |
| UL                 | Recognized    | CSA                 | Y             |
| CE                 | Y             | Number of Speeds    | 1             |

### Technical Specifications

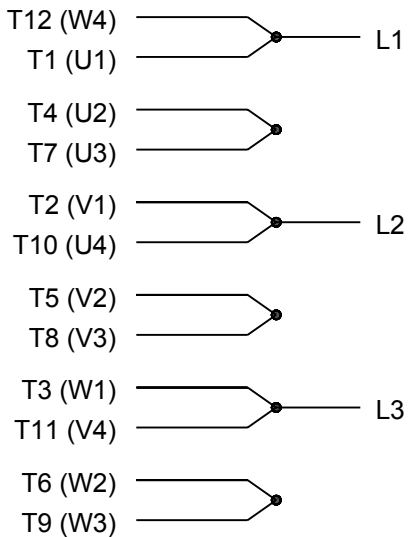
|                       |            |                   |                 |
|-----------------------|------------|-------------------|-----------------|
| Electrical Type       | POLYPHASE  | Starting Method   | Across The Line |
| Poles                 | 6          | Rotation          | Reversible      |
| Mounting              | Rigid Base | Drive End Bearing | Ball            |
| Opp Drive End Bearing | Ball       | Frame Material    | Cast Iron       |
| Shaft Type            | Keyed      | Overall Length    | 27.09 in        |
| Frame Length          | 13.97 in   | Shaft Diameter    | 1.875 in        |
| Shaft Extension       | 4.62 in    |                   |                 |
| Connection Drawing    | A-EE7308AA | Outline Drawing   | SS620238        |

This is an uncontrolled document once printed or downloaded and is subject to change without notice. Date Created:11/29/2022

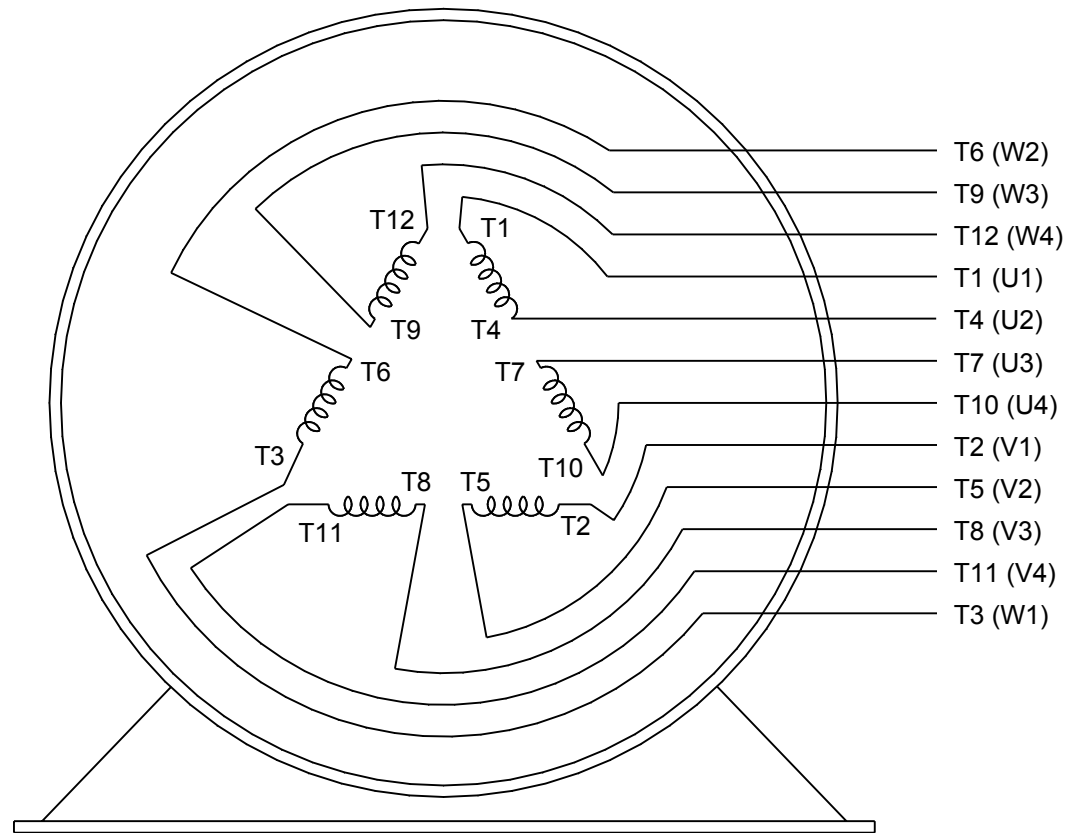




## LOW VOLTAGE




## HIGH VOLTAGE



VIEW OF TERMINAL END

|  |                       |                    |
|--|-----------------------|--------------------|
| DRAWING REVISION<br>K  | REVISION BY<br>AJW    | DATE<br>07-17-2015 |
| ECO<br>ECO-0081632   | APPROVED BY<br>T. VUE | DATE<br>07-17-2015 |
| ECO DESCRIPTION<br>REV'D IEC MARKINGS PER IEC 60034-8  |                       |                    |
| COPYRIGHT REGAL BELOIT AMERICA, INC. ALL RIGHTS RESERVED.<br>PROPRIETARY AND CONFIDENTIAL INFORMATION - THIS DOCUMENT IS THE PROPERTY OF<br>REGAL BELOIT AMERICA, INC. ("OWNER") AND CONTAINS OWNER'S PROPRIETARY<br>INFORMATION. ANY PERSON, CORPORATION OR OTHER FIRM RECEIVING IT IS DEEMED,<br>BY RECEIVING IT, TO AGREE THAT IT, AND/OR ANY PART OF IT, SHALL NOT BE DISCLOSED<br>TO ANY PERSON, CORPORATION OR OTHER ENTITY, DUPLICATED, AND/OR USED, EXCEPT<br>AS EXPRESSLY APPROVED IN WRITING IN ADVANCE BY OWNER. THIS DOCUMENT SHALL<br>BE RETURNED TO OWNER UPON REQUEST. IT MAY BE SUBJECT TO CERTAIN<br>RESTRICTIONS UNDER APPLICABLE EXPORT CONTROL LAWS AND REGULATIONS. |                       |                    |

|                    |                           |
|--------------------|---------------------------|
| DRAWN BY<br>LZ     | THIRD ANGLE<br>PROJECTION |
| DATE<br>01-12-1994 |                           |
| APPROVED BY<br>GK  |                           |
| DATE<br>01-14-1994 |                           |
| REFERENCE          |                           |

|  |                            |                 |
|--|----------------------------|-----------------|
|  Regal Beloit America, Inc. |                            |                 |
| DESCRIPTION<br>CONN DIAGRAM-EXTERNAL<br>3Ø-2/1 DELTA-12 LEADS  |                            |                 |
| MATERIAL   | PROCESS/FINISH             |                 |
| SIZE<br>A  | DRAWING NUMBER<br>EE7308AA | SHEET<br>1 OF 1 |