

# PRODUCT INFORMATION PACKET



Model No: TE188

Catalog No: TE188

60 HP General Purpose Motor, 3 phase, 3600 RPM, 208-230/460 V, 364TS Frame, TEFC  
General Purpose Motors



Regal and Century are trademarks of Regal Rexnord Corporation or one of its affiliated companies.  
©2021 Regal Rexnord Corporation, All Rights Reserved. MC017097E





### Nameplate Specifications

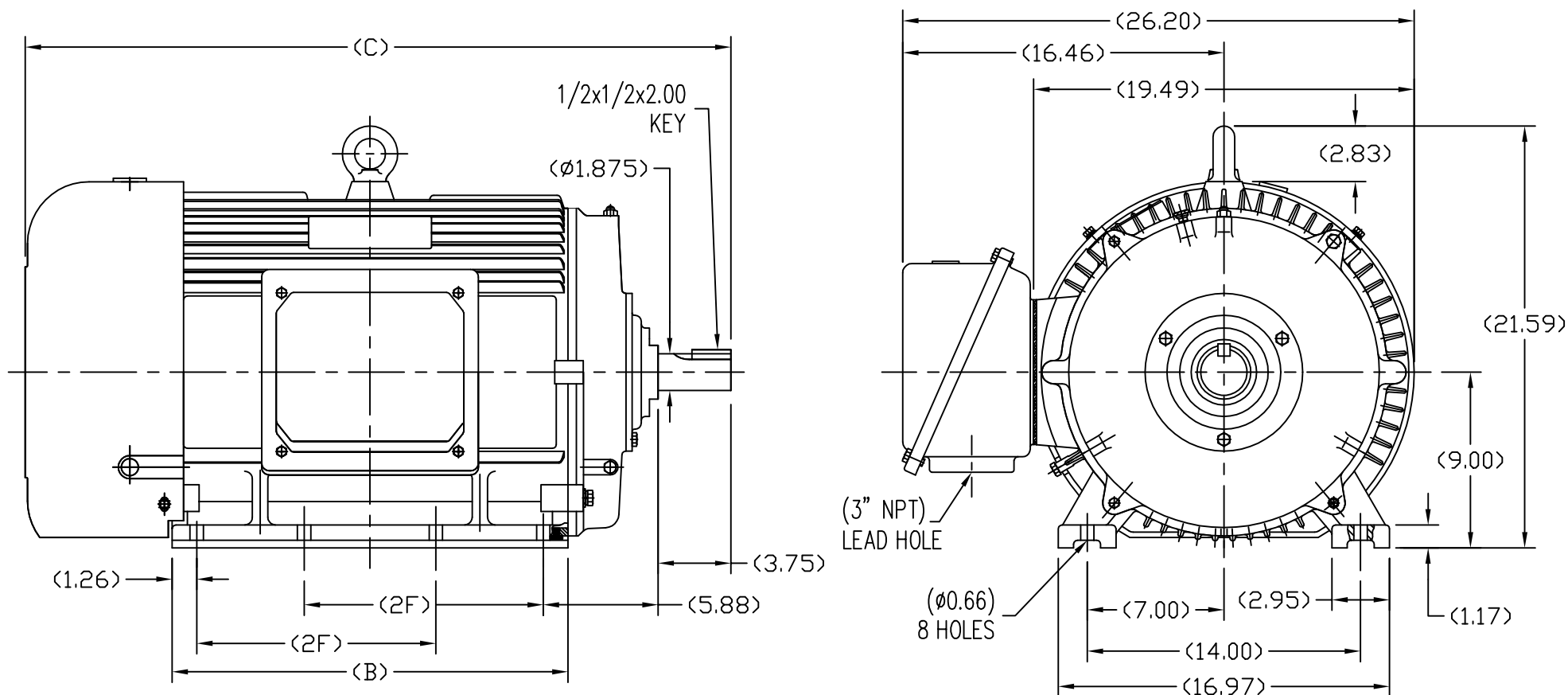
Output HP	60 Hp	Output KW	44.8 kW
Frequency	60 Hz	Voltage	208-230/460 V
Current	132/66 A	Speed	3575 rpm
Service Factor	1.15	Phase	3
Duty	Continuous	Insulation Class	F
Frame	364TS	Enclosure	Totally Enclosed Fan Cooled
Thermal Protection	None	Ambient Temperature	40 °C
UL	Recognized	CSA	Y
CE	Y	Number of Speeds	1

### Technical Specifications

Electrical Type	POLYPHASE	Starting Method	Across The Line
Poles	2	Rotation	Reversible
Mounting	Rigid Base	Drive End Bearing	Ball
Opp Drive End Bearing	Ball	Frame Material	Cast Iron
Shaft Type	Keyed	Overall Length	34.57 in
Frame Length	18.50 in	Shaft Diameter	1.875 in
Shaft Extension	3.75 in		
Outline Drawing	SS620284	Connection Drawing	A-EE7308AA

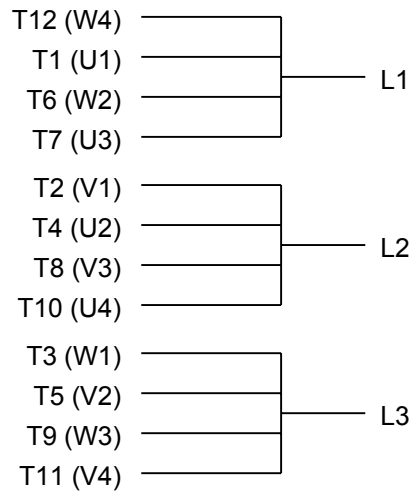
This is an uncontrolled document once printed or downloaded and is subject to change without notice. Date Created:10/12/2021

SS620284

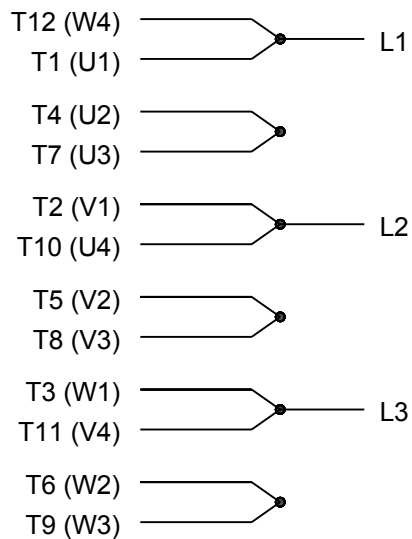


364TS	34.57	18.5	11.25
365TS	36.34	20.28	12.25
Frame	C	B	2F

			TOLERANCES UNLESS SPECIFIED		REGAL-BELOIT CORPORATION	DRAWN CL 02-21-2010	
NO.	REVISION	BY & DATE	DEC.	INCHES		CHK	
			.X	±.1	TITLE 364/365TS FR-TEFC-CAST IRON	APPD	
			.XX	±.03		SCALE	1=5
			.XXX	±.005		REF	
			.XXXX	±.0005		FMF	HWADA
			CHK	ANG	FINISH	PREV	
THIS DRAWING IN DESIGN AND DETAIL IS OUR PROPERTY AND MUST NOT BE USED EXCEPT IN CONNECTION WITH OUR WORK. ALL RIGHTS OF DESIGN AND INVENTION ARE RESERVED. THIS IS AN ELECTRONICALLY GENERATED DOCUMENT - DO NOT SCALE THIS PRINT.			RFP	CAD FILE	SS620284	SIZE	DRAWING NO.
			DIST			B	SS620284
							REV.



## LOW VOLTAGE



## HIGH VOLTAGE



VIEW OF TERMINAL END

DRAWING REVISION K	REVISION BY AJW	DATE 07-17-2015
ECO ECO-0081632	APPROVED BY T. VUE	DATE 07-17-2015
ECO DESCRIPTION REV'D IEC MARKINGS PER IEC 60034-8		
COPYRIGHT REGAL BELOIT AMERICA, INC. ALL RIGHTS RESERVED. PROPRIETARY AND CONFIDENTIAL INFORMATION - THIS DOCUMENT IS THE PROPERTY OF REGAL BELOIT AMERICA, INC. ("OWNER") AND CONTAINS OWNER'S PROPRIETARY INFORMATION. ANY PERSON, CORPORATION OR OTHER FIRM RECEIVING IT IS DEEMED, BY RECEIVING IT, TO AGREE THAT IT, AND/OR ANY PART OF IT, SHALL NOT BE DISCLOSED TO ANY PERSON, CORPORATION OR OTHER ENTITY, DUPLICATED, AND/OR USED, EXCEPT AS EXPRESSLY APPROVED IN WRITING IN ADVANCE BY OWNER. THIS DOCUMENT SHALL BE RETURNED TO OWNER UPON REQUEST. IT MAY BE SUBJECT TO CERTAIN RESTRICTIONS UNDER APPLICABLE EXPORT CONTROL LAWS AND REGULATIONS.		

DRAWN BY LZ
DATE 01-12-1994
APPROVED BY GK
DATE 01-14-1994
REFERENCE
THIRD ANGLE PROJECTION

 Regal Beloit America, Inc.		
DESCRIPTION <b>CONN DIAGRAM-EXTERNAL</b> 3Ø-2/1 DELTA-12 LEADS		
MATERIAL	PROCESS/FINISH	
SIZE A	DRAWING NUMBER EE7308AA	SHEET 1 OF 1