

# PRODUCT INFORMATION PACKET



Model No: TO112

Catalog No: E1008

General Purpose Motor, 2 HP, 3 Ph, 60 Hz, 575 V, 1800 RPM, 145T Frame, ODP



Regal and Century are trademarks of Regal Rexnord Corporation or one of its affiliated companies.

©2023 Regal Rexnord Corporation, All Rights Reserved. MC017097E





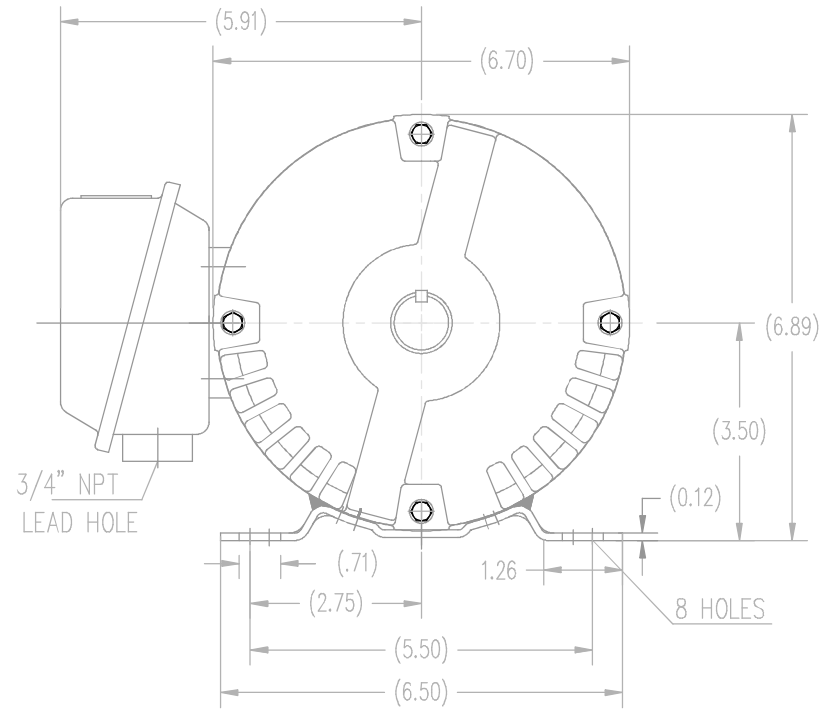
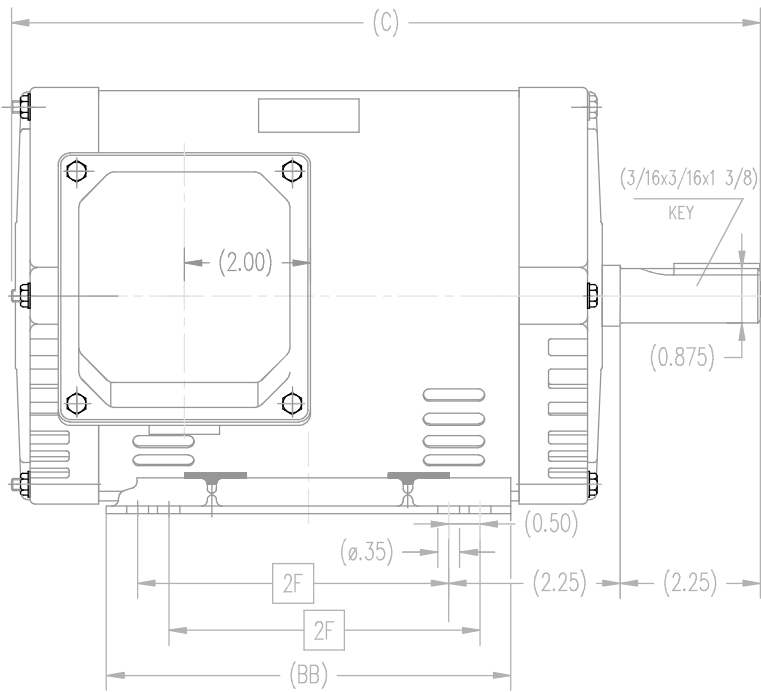
### Nameplate Specifications

|                    |               |                     |                 |
|--------------------|---------------|---------------------|-----------------|
| Output HP          | 2 Hp          | Output KW           | 1.5 kW          |
| Frequency          | 60 Hz         | Voltage             | 575 V           |
| Current            | 2 A           | Speed               | 1730 rpm        |
| Service Factor     | 1.15          | Phase               | 3               |
| Duty               | Continuous    | Insulation Class    | F               |
| Frame              | 145T          | Enclosure           | Open Drip Proof |
| Thermal Protection | No Protection | Ambient Temperature | 40 °C           |
| UL                 | Recognized    | CSA                 | Y               |
| CE                 | Y             | Number of Speeds    | 1               |

### Technical Specifications


|                       |            |                    |                 |
|-----------------------|------------|--------------------|-----------------|
| Electrical Type       | POLYPHASE  | Starting Method    | Across The Line |
| Poles                 | 4          | Rotation           | Reversible      |
| Mounting              | Rigid Base | Drive End Bearing  | Ball            |
| Opp Drive End Bearing | Ball       | Frame Material     | Rolled Steel    |
| Shaft Type            | Keyed      | Overall Length     | 12.20 in        |
| Frame Length          | 6.75 in    | Shaft Diameter     | 0.875 in        |
| Shaft Extension       | 2.25 in    |                    |                 |
| Outline Drawing       | SS620597   | Connection Drawing | A-EE7300        |

This is an uncontrolled document once printed or downloaded and is subject to change without notice. Date Created:03/01/2023



DRAWING MAY NOT BE TO SCALE

|       |       |      |      |
|-------|-------|------|------|
| 143T  | 11.20 | 5.55 | 4.00 |
| 145T  | 12.20 | 6.53 | 5.00 |
| FRAME | C     | BB   | 2F   |

|  |  |  |  |          |   |                      |             |          |
|--|--|--|--|----------|---|----------------------|-------------|----------|
|  |  |  | TOLERANCES<br>UNLESS SPECIFIED   |          |  <b>REGAL-BELOIT CORPORATION</b> | DRAWN ZYH 06-25-2012 |             |          |
|  |  |  | DEC.   | INCHES   |   | CHK HZJ 06-25-2012   |             |          |
|  |  |  | .X   | ±.1      |   | APPD CL 06-25-2012   |             |          |
|  |  |  | .XX  | ±.03     |   | SCALE 1=1            |             |          |
|  |  |  | .XXX   | ±.005    | TITLE<br>143/145T FR ODP-ROLL STEEL   | REF                  |             |          |
|  |  |  | .XXX   | ±.0005   |   | FMF HWADA            |             |          |
|  |  |  | NO.  | REVISION | BY & DATE   | FINISH               | PREV        |          |
|  |  |  | THIS DRAWING IN DESIGN AND DETAIL IS OUR PROPERTY AND MUST NOT BE USED EXCEPT IN CONNECTION WITH OUR WORK ALL RIGHTS OF DESIGN AND INVENTION ARE RESERVED THIS IS AN ELECTRONICALLY GENERATED DOCUMENT - DO NOT SCALE THIS PRINT |          |   | RFP                  | CAD FILE    | SS620597 |
|  |  |  | CHK  | ANG      | ±1/2"   | SIZE                 | DRAWING NO. | REV.     |
|  |  |  | DIST   | 3 of 4   |   |                      | B           | SS620597 |
|  |  |  |  |          |   | 1                    |             |          |

THREE PHASE - SINGLE VOLTAGE  
MOTOR - CONDUIT BOX @ 'A'

TO REVERSE ROTATION:  
INTERCHANGE ANY TWO LINE  
LEAD CONNECTIONS

TERMINAL BLOCK WHEN SPECIFIED

IF MOTOR HAS 9 LEADS

T1(U1) T1(U1) T1(U1) → L1

T2(V1) T2(V1) T2(V1) → L2

T3(W1) T3(W1) T3(W1) → L3

IF MOTOR HAS 6 LEADS

T1(U1) T1(U1) → L1

T2(V1) T2(V1) → L2

T3(W1) T3(W1) → L3

A-9806 DECAL



| OPTIONAL CORD CONNECTION |       |
|--------------------------|-------|
| L1                       | WHITE |
| L2                       | RED   |
| L3                       | BLACK |

|  |                   |                               |
|--|-------------------|-------------------------------|
| DRAWING REVISION<br>AC   | REVISION BY<br>BS | REV DATE/© DATE<br>26/07/2022 |
| REQUEST NUMBER<br>CR-0010402   | APPROVED BY<br>SN | DATE<br>26/07/2022            |
| REQUEST NUMBER DESCRIPTION<br>DRAWING UPDATED  |                   |                               |
| COPYRIGHT (PER REVISION DATE) REGAL BELOIT AMERICA, INC. ALL RIGHTS RESERVED. PROPRIETARY AND CONFIDENTIAL INFORMATION - THIS DOCUMENT IS THE PROPERTY OF REGAL BELOIT AMERICA, INC. ("OWNER") AND CONTAINS OWNER'S PROPRIETARY INFORMATION. ANY PERSON, CORPORATION OR OTHER FIRM RECEIVING IT IS DEEMED, BY RECEIVING IT, TO AGREE THAT IT, AND/OR ANY PART OF IT, SHALL NOT BE DISCLOSED TO ANY PERSON, CORPORATION OR OTHER ENTITY, DUPLICATED, AND/OR USED, EXCEPT AS EXPRESSLY APPROVED IN WRITING IN ADVANCE BY OWNER. THIS DOCUMENT SHALL BE RETURNED TO OWNER UPON REQUEST. IT MAY BE SUBJECT TO CERTAIN RESTRICTIONS UNDER APPLICABLE EXPORT CONTROL LAWS AND REGULATIONS. |                   |                               |

PRIMARY DIMENSIONS ARE INCH  
mm DIMENSIONS IN [BRACKETS]  
ARE FOR REFERENCE ONLY

|                        |
|------------------------|
| DRAWN BY<br>DA         |
| DATE<br>03-26-1993     |
| APPROVED BY<br>TB      |
| DATE<br>03-26-1993     |
| REFERENCE              |
| THIRD ANGLE PROJECTION |

|   |                          |
|---|--------------------------|
| Regal Beloit America, Inc.  |                          |
| DESCRIPTION<br>CONNECTION DIAGRAM<br>EXTERNAL - SINGLE VOLTAGE - 3Ø MOTOR |                          |
| MATERIAL  | PROCESS/FINISH           |
| SIZE<br>A   | DRAWING NUMBER<br>EE7300 |
| SHEET<br>1 OF 1   |                          |