

PRODUCT INFORMATION PACKET



Model No: TO100

Catalog No: TO100

General Purpose Motor, 1 HP, 3 Ph, 60 Hz, 208-230/460 V, 1200 RPM, 145T Frame, ODP



Regal and Century are trademarks of Regal Rexnord Corporation or one of its affiliated companies.

©2023 Regal Rexnord Corporation, All Rights Reserved. MC017097E





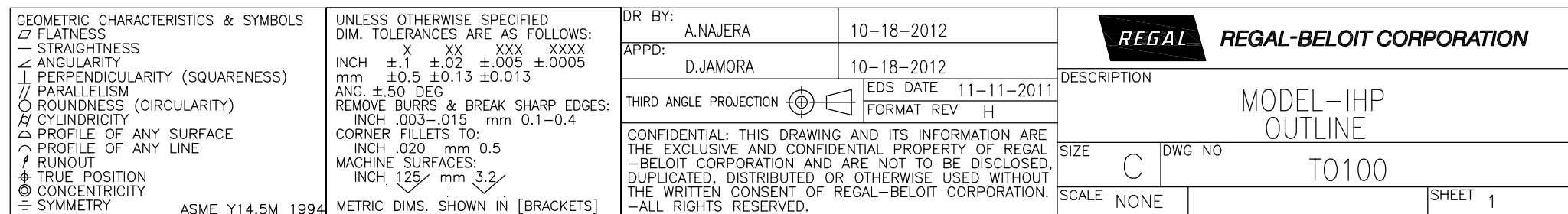
Nameplate Specifications

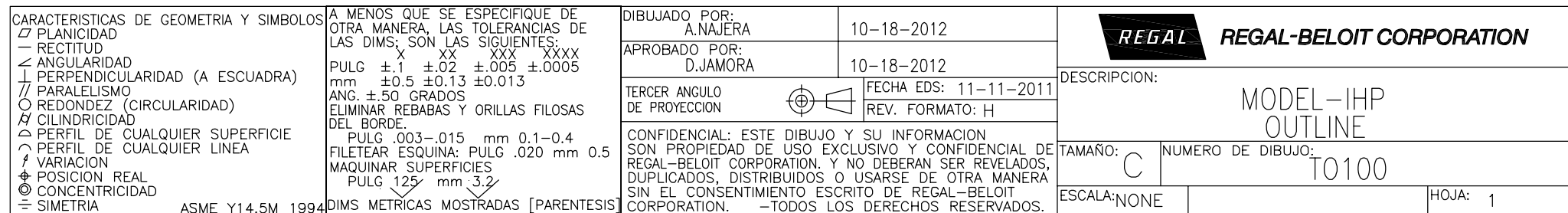
Output HP	1 Hp	Output KW	0.75 kW
Frequency	60 Hz	Voltage	208-230/460 V
Current	1.55 A	Speed	1160 rpm
Service Factor	1.15	Phase	3
Efficiency	82.5 %	Duty	Continuous
Insulation Class	F	Frame	145T
Enclosure	Open Drip Proof	Thermal Protection	No Protection
Ambient Temperature	40 °C	UL	Recognized
CSA	Y	CE	Y
Number of Speeds	1		

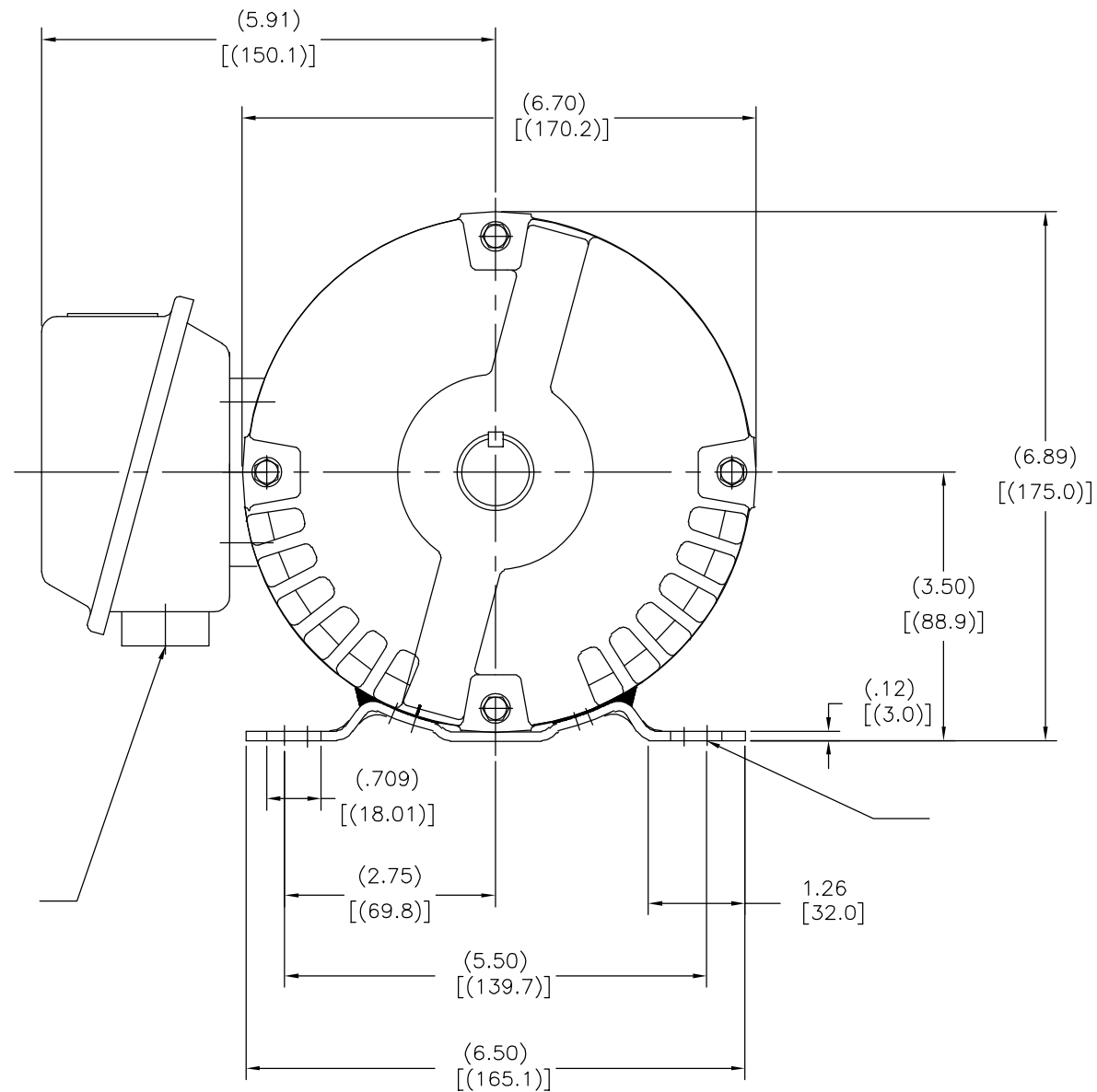
Technical Specifications

Electrical Type	POLYPHASE	Starting Method	Across The Line
Poles	6	Rotation	Reversible
Mounting	Rigid Base	Drive End Bearing	Ball
Opp Drive End Bearing	Ball	Frame Material	Rolled Steel
Shaft Type	Keyed	Overall Length	12.20 in
Frame Length	6.75 in	Shaft Diameter	0.875 in
Shaft Extension	2.25 in		
Connection Drawing	80022802	Outline Drawing	TO100-S01

This is an uncontrolled document once printed or downloaded and is subject to change without notice. Date Created:01/30/2023







<div>形位公差 □ 平面度 — 直线度 ∠ 倾斜度 ⊥ 垂直度 ∥ 平行度 ○ 圆度 ⊙ 圆柱度 ⌒ 圆轮廓度 ⌒ 线轮廓度 ⊙ 圆跳动 ⊙ 位置度 ⊙ 同轴度 ⊙ 对称度</div>	<div>除另有注明 尺寸公差如下: 英寸 ± 0.1 ± 0.02 ± 0.005 ± 0.0005 毫米 ± 0.5 ± 0.13 ± 0.013 角度 ± 50 度 清理毛刺和尖棱 英寸 .003-.015 毫米 0.1-0.4 内圆角 英寸 .020 毫米 0.5 表面粗糙度 英制 125 米制 3.2 ASME Y14.5M 1994</div>	绘图: A.NAJERA 10-18-2012		<div><div>REGAL</div>REGAL-BELOIT CORPORATION</div>			
		批准: D.JAMORA 10-18-2012					
		第三角投影		<div></div> 图纸格式发布日期 11-11-2011 图纸格式版本 H		名称	
		机密: 本图纸及相关信息所有权归REGAL-BELOIT CORPORATION. 未经REGAL-BELOIT CORPORATION书面授权, 不得泄露、 复制、传播或作其他用途。--版权所有				MODEL-IHP OUTLINE	
		图幅 C		图号 T0100			
		比例 NONE		页号 1			