

PRODUCT INFORMATION PACKET



Model No: TE147

Catalog No: TE147

General Purpose Motor, 15 HP, 3 Ph, 60 Hz, 208-230/460 V, 1200 RPM, 284T Frame, TEFC



Regal and Century are trademarks of Regal Rexnord Corporation or one of its affiliated companies.

©2022 Regal Rexnord Corporation, All Rights Reserved. MC017097E





Nameplate Specifications

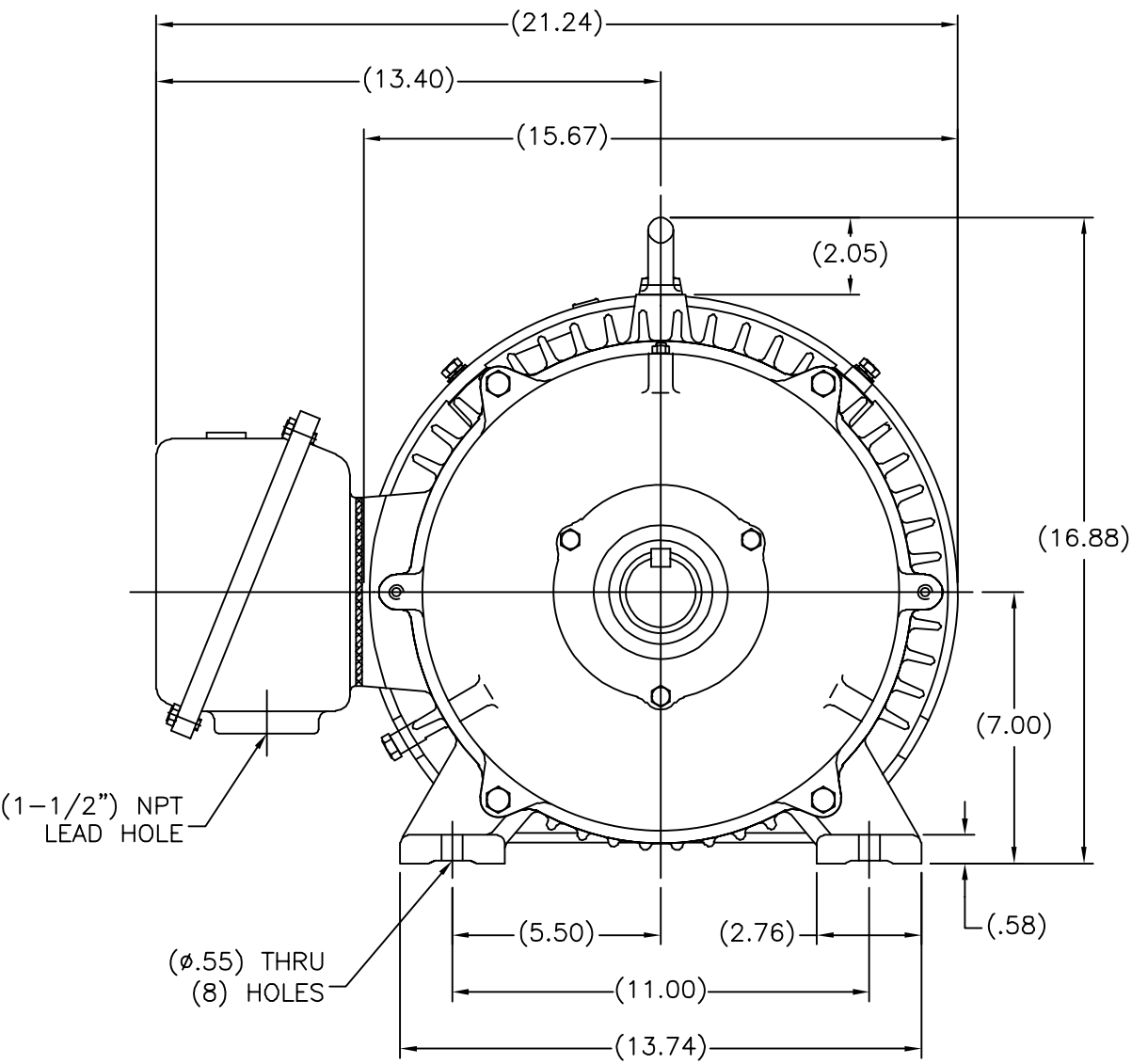
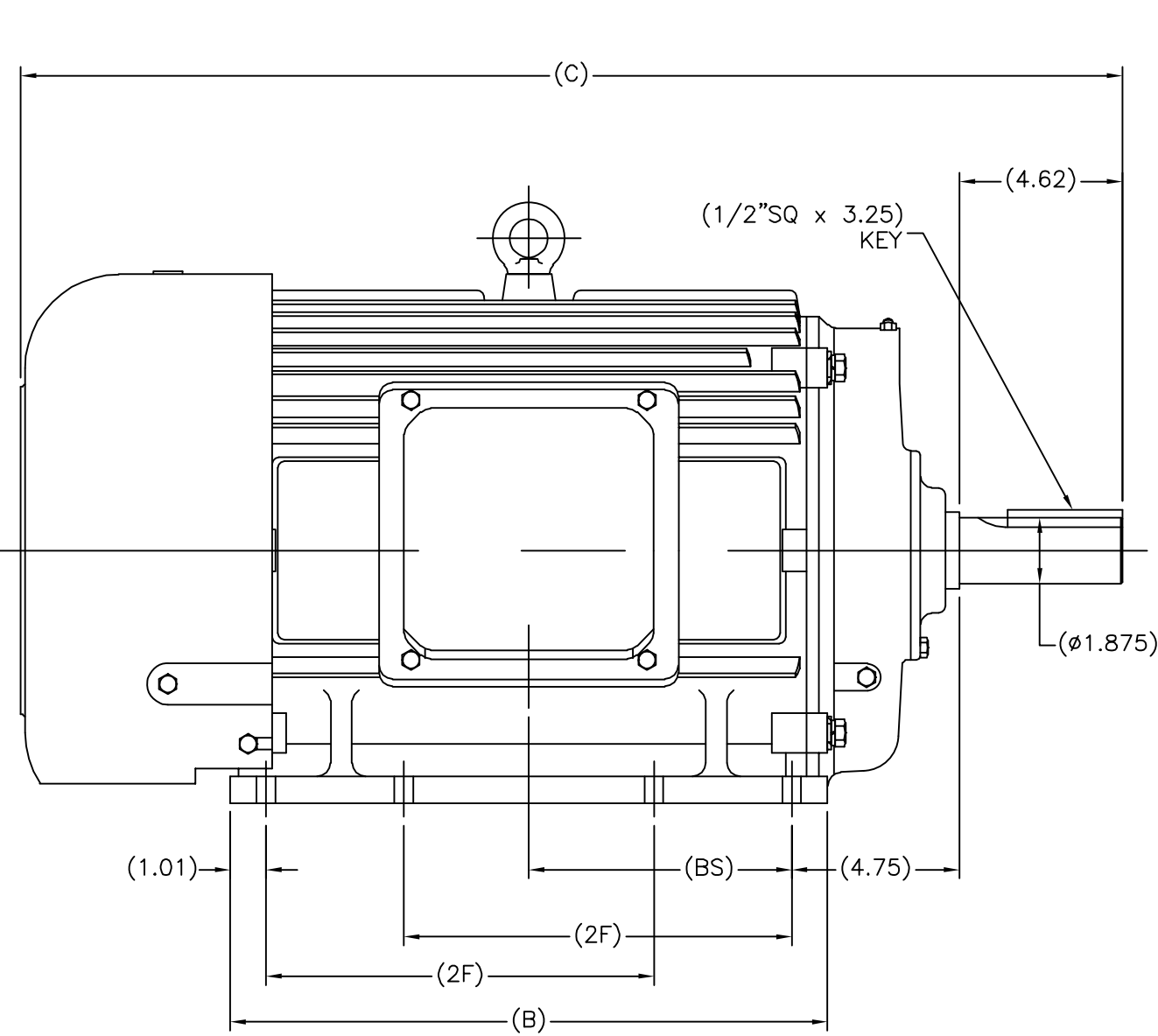
Output HP	15 Hp	Output KW	11.2 kW
Frequency	60 Hz	Voltage	208-230/460 V
Current	44-41/20.5 A	Speed	1185 rpm
Service Factor	1.15	Phase	3
Duty	Continuous	Insulation Class	F
Frame	284T	Enclosure	Totally Enclosed Fan Cooled
Thermal Protection	No Protection	Ambient Temperature	40 °C
UL	Recognized	CSA	Y
CE	Y	Number of Speeds	1

Technical Specifications

Electrical Type	POLYPHASE	Starting Method	Across The Line
Poles	6	Rotation	Reversible
Mounting	Rigid Base	Drive End Bearing	Ball
Opp Drive End Bearing	Ball	Frame Material	Cast Iron
Shaft Type	Keyed	Overall Length	30.16 in
Frame Length	14.56 in	Shaft Diameter	1.875 in
Shaft Extension	4.62 in		
Connection Drawing	A-EE7308AA	Outline Drawing	SS620245

This is an uncontrolled document once printed or downloaded and is subject to change without notice. Date Created:11/29/2022


SS620245



(MAY NOT BE DRAWN TO SCALE)

(DIMENSIONS IN TABLE ARE CONSIDERED REFERENCE)

284T	30.16	15.75	9.50	6.86
286T	31.34	16.93	11.00	7.45
FRAME	C	B	2F	BS

		TOLERANCES UNLESS SPECIFIED		 REGAL-BELOIT CORPORATION		DRAWN MSG 01-12-2010	
		DEC.	INCHES			CHK	MJS 01-13-2010
		.X	±.1	TITLE OUTLINE 280T FR. - TEFC		APPD	SB 01-13-2010
		.XX	±.03			SCALE	1=4
		.XXX	±.005	MAT'L.		REF	
1		ADDED 'BS' DIM. UPDATED TITLE BLOCK ECO-0048910	RFH 04/07/2014	EH	.XXXX ±.0005	FMF	
NO.		REVISION	BY & DATE	CHK	ANG ±7'30"	FINISH	PREV
		THIS DRAWING IN DESIGN AND DETAIL IS OUR PROPERTY AND MUST NOT BE USED EXCEPT IN CONNECTION WITH OUR WORK ALL RIGHTS OF DESIGN AND INVENTION ARE RESERVED THIS IS AN ELECTRONICALLY GENERATED DOCUMENT - DO NOT SCALE THIS PRINT				RFP	01-14-2010
						CAD FILE	SS620245
						SIZE	B
						DRAWING NO.	SS620245
						PAGE OF	1
						REV.	1



LOW VOLTAGE



HIGH VOLTAGE



VIEW OF TERMINAL END

DRAWING REVISION K	REVISION BY AJW	DATE 07-17-2015
ECO ECO-0081632	APPROVED BY T. VUE	DATE 07-17-2015
ECO DESCRIPTION REV'D IEC MARKINGS PER IEC 60034-8		
COPYRIGHT REGAL BELOIT AMERICA, INC. ALL RIGHTS RESERVED. PROPRIETARY AND CONFIDENTIAL INFORMATION - THIS DOCUMENT IS THE PROPERTY OF REGAL BELOIT AMERICA, INC. ("OWNER") AND CONTAINS OWNER'S PROPRIETARY INFORMATION. ANY PERSON, CORPORATION OR OTHER FIRM RECEIVING IT IS DEEMED, BY RECEIVING IT, TO AGREE THAT IT, AND/OR ANY PART OF IT, SHALL NOT BE DISCLOSED TO ANY PERSON, CORPORATION OR OTHER ENTITY, DUPLICATED, AND/OR USED, EXCEPT AS EXPRESSLY APPROVED IN WRITING IN ADVANCE BY OWNER. THIS DOCUMENT SHALL BE RETURNED TO OWNER UPON REQUEST. IT MAY BE SUBJECT TO CERTAIN RESTRICTIONS UNDER APPLICABLE EXPORT CONTROL LAWS AND REGULATIONS.		

DRAWN BY LZ	THIRD ANGLE PROJECTION
DATE 01-12-1994	
APPROVED BY GK	
DATE 01-14-1994	
REFERENCE	

 Regal Beloit America, Inc.		
DESCRIPTION CONN DIAGRAM-EXTERNAL 3Ø-2/1 DELTA-12 LEADS		
MATERIAL	PROCESS/FINISH	
SIZE A	DRAWING NUMBER EE7308AA	SHEET 1 OF 1