

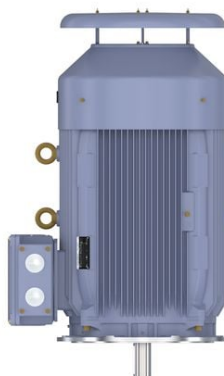
# PRODUCT INFORMATION PACKET

**marathon®**  
Motors

Model No: TCN0904A1141GAC010

Catalog No: TCN0904A1141GAC010

TerraMAX® Cast Iron Motor, 120 HP, 3 Ph, 50 Hz, 400 V, 750 RPM, 315L Frame, TEFC



Regal and Marathon are trademarks of Regal Rexnord Corporation or one of its affiliated companies.

©2022 Regal Rexnord Corporation, All Rights Reserved. MC017097E

**RegalRexnord**

### Nameplate Specifications

|                        |               |                            |                             |
|------------------------|---------------|----------------------------|-----------------------------|
| Output HP              | 120 Hp        | Output KW                  | 90.0 kW                     |
| Frequency              | 50 Hz         | Voltage                    | 400 V                       |
| Current                | 190.5 A       | Speed                      | 743 rpm                     |
| Service Factor         | 1             | Phase                      | 3                           |
| Efficiency             | 93.4 %        | Power Factor               | 0.73                        |
| Duty                   | S1            | Insulation Class           | F                           |
| Frame                  | 315L          | Enclosure                  | Totally Enclosed Fan Cooled |
| Thermal Protection     | No Protection | Ambient Temperature        | 40 °C                       |
| Drive End Bearing Size | 6319          | Opp Drive End Bearing Size | 6319                        |
| UL                     | No            | CSA                        | No                          |
| CE                     | Yes           | IP Code                    | 55                          |
| Number of Speeds       | 1             | Efficiency Class           | IE3                         |

### Technical Specifications

|                       |               |                       |                |
|-----------------------|---------------|-----------------------|----------------|
| Electrical Type       | Squirrel Cage | Starting Method       | Direct On Line |
| Poles                 | 8             | Rotation              | Bi-Directional |
| Mounting              | V1            | Motor Orientation     | Shaftdown      |
| Drive End Bearing     | C3            | Opp Drive End Bearing | C3             |
| Frame Material        | Cast Iron     | Shaft Type            | Keyed          |
| Overall Length        | 1453 mm       | Frame Length          | 840 mm         |
| Shaft Diameter        | 80 mm         | Shaft Extension       | 170 mm         |
| Assembly/Box Mounting | Top           |                       |                |
| Connection Drawing    | 8442000085    | Outline Drawing       | 0231500898     |

This is an uncontrolled document once printed or downloaded and is subject to change without notice. Date Created:12/02/2022



RIGHTS RESERVED. Copy

### ECO DESCRIPTION

## GEOMETRIC TOLERANCE

|            |         |      |
|------------|---------|------|
| LINEAR DIM | >0~6    | ±0.1 |
|            | >6~30   | ±0.2 |
|            | >30~120 | ±0.3 |



1. PRESSURE-SENSITIVE ADHESIVE COATED PAPER ON THE BACK OF SELF-ADHESIVE.
2. AT THE END OF YELLOW, WORDS, SYMBOLS, LETTERS ARE BLACK, BORDER IS BLACK.
3. THE TOLERANCE OF THE LINEAR SIZE OF THE TOLERANCE WITHOUT THE TOLERANCE BY THE TABLE.

8WD.442.2017

|   |                        |   |                                     |                 |
|---|------------------------|---|-------------------------------------|-----------------|
|  | DRAWN BY<br>SN         |  Regal Beloit America, Inc. |                                     |                 |
|   | DATE<br>16/12/2016     |   |                                     |                 |
|   | APPROVED BY<br>SBD     | DESCRIPTION<br><b>CONN DIAGRAM-NAMEPLATE</b>  |                                     |                 |
|   | DATE<br>16/12/2016     |   |                                     |                 |
|   | REFERENCE              | MATERIAL  | PROCESS/FINISH                      |                 |
|   | THIRD ANGLE PROJECTION | SIZE<br><b>A</b>  | DRAWING NUMBER<br><b>8442000085</b> | SHEET<br>1 OF 1 |

**Model No.** TCN0904A1141GAC010

| U<br>(V) | Δ / Y<br>Conn | f<br>[Hz] | P<br>[kW] | P<br>[hp] | I<br>[A] | n<br>[RPM] | T<br>[Nm] | IE<br>Class | % EFF at __ load |      |       |       | PF at __ load |       |       | I <sub>A</sub> /I <sub>N</sub><br>[pu] | T <sub>A</sub> /T <sub>N</sub><br>[pu] | T <sub>K</sub> /T <sub>N</sub><br>[pu] |
|----------|---------------|-----------|-----------|-----------|----------|------------|-----------|-------------|------------------|------|-------|-------|---------------|-------|-------|--|--|--|
|          |               |           |           |           |          |            |           |             | 5/4FL            | FL   | 3/4FL | 1/2FL | FL            | 3/4FL | 1/2FL |  |  |  |
| 400      | Δ             | 50        | 90        | 120       | 190.5    | 743        | 1151.38   | IE3         | -                | 93.4 | 93.4  | 92.6  | 0.73          | 0.68  | 0.55  | 4.9                                    | 1.9                                    | 2.1                                    |
|          |               |           |           |           |          |            |           |             |                  |      |       |       |               |       |       |  |  |  |

|                                  |                             |   |   |
|----------------------------------|-----------------------------|---|---|
| Motor type                       | TCN                         | Degree of protection                      | IP 55                                       |
| Enclosure                        | TEFC                        | Mounting type                             | IM V1                                       |
| Frame Material                   | Cast Iron                   | Cooling method                            | IC 411                                      |
| Frame size                       | 315L                        | Motor weight - approx.                    | 922 kg                                      |
| Duty                             | S1                          | Gross weight - approx.                    | 967 kg                                      |
| Voltage variation *              | ± 10%                       | Motor inertia                             | 5.6618 kgm <sup>2</sup>                     |
| Frequency variation *            | ± 5%                        | Load inertia                              | Customer to Provide                         |
| Combined variation *             | 10%                         | Vibration level                           | 2.8 mm/s                                    |
| Design                           | N                           | Noise level ( 1meter distance from motor) | 64 dB(A)                                    |
| Service factor                   | 1.0                         | No. of starts hot/cold/Equally spread     | 2/3/4                                       |
| Insulation class                 | F                           | Starting method                           | DOL   |
| Ambient temperature              | -20 to +40 °C               | Type of coupling                          | Direct                                      |
| Temperature rise (by resistance) | 80 [ Class B ] K            | LR withstand time (hot/cold)              | 15/30 s                                     |
| Altitude above sea level         | 1000 meter                  | Direction of rotation                     | Bi-directional                              |
| Hazardous area classification    | Ex nA                       | Standard rotation                         | Clockwise form DE                           |
| Zone classification              | Zone 2                      | Paint shade                               | RAL 5014                                    |
| Gas group                        | IIC                         | Accessories                               |   |
| Temperature class                | T3                          | Accessory - 1                             | PTC 150°C                                   |
| Rotor type                       | Aluminum die cast           | Accessory - 2                             | -   |
| Bearing type                     | Anti-friction ball          | Accessory - 3                             | -   |
| DE / NDE bearing                 | 6319 C3 / 6319 C3           | Terminal box position                     | TOP   |
| Lubrication method               | Regreasable                 | Maximum cable size/conduit size           | 1R x 3C x 240mm <sup>2</sup> /2 x M63 x 1.5 |
| Type of grease                   | CHEVRON SRI-2 or Equivalent | Auxiliary terminal box                    | NA  |

I<sub>A</sub>/I<sub>N</sub> - Locked Rotor Current / Rated Current

T<sub>K</sub>/T<sub>N</sub> - Breakdown Torque / Rated Torque

T<sub>A</sub>/T<sub>N</sub> - Locked Rotor Torque / Rated Torque

**NOTE**

ATEX/IEC Ex certified as per IEC/EN 60079-0; IEC/EN 60079-15

All performance values at rated voltage and frequency.

All performance parameters are subjected to standard tolerance as per IEC 60034-1

\* Voltage, Frequency and combined variation are as per IEC60034-1

Technical data are subject to change. There may be slight variations between calculated values in this datasheet and the motor nameplate figures.

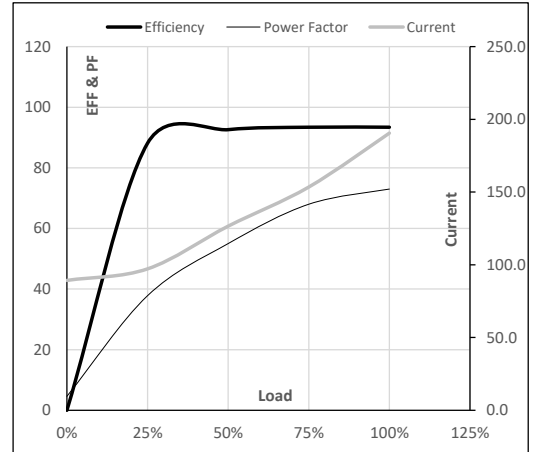
| Efficiency | Europe         | China | India | Aus/Nz    | Brazil | Global IEC     |
|------------|----------------|-------|-------|-----------|--------|----------------|
| Standards  | IEC:60034-30-1 | -     | -     | GEMS 2019 | -      | IEC:60034-30-1 |

**Model No.** TCN0904A1141GAC010

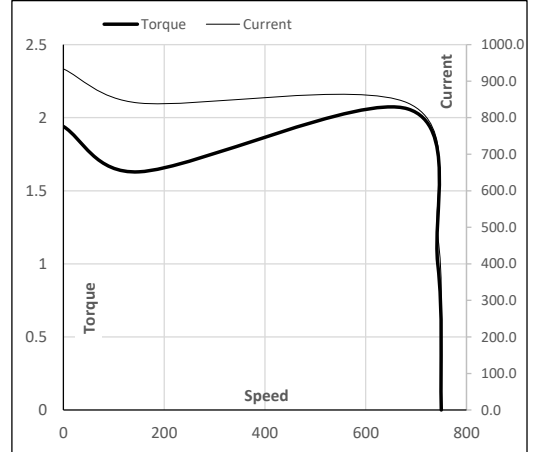
| Enclosure | U<br>(V) | $\Delta$ / Y<br>Conn | f<br>[Hz] | P<br>[kW] | P<br>[hp] | I<br>[A] | n<br>[RPM] | T<br>[kgm] | T<br>[Nm] | IE<br>Class | Amb<br>[°C] | Duty | Elevation<br>[m] | Inertia<br>[kg-m <sup>2</sup> ] | Weight<br>[kg] |
|-----------|----------|----------------------|-----------|-----------|-----------|----------|------------|------------|-----------|-------------|-------------|------|------------------|---------------------------------|----------------|
| TEFC      | 400      | $\Delta$             | 50        | 90        | 120       | 190.5    | 743        | 117.41     | 1151.38   | IE3         | 40          | S1   | 1000             | 5.6618                          | 922            |

**Motor Load Data**

| Load Point   |       | NL   | 1/4FL | 1/2FL | 3/4FL | FL     | 5/4FL |
|--------------|-------|------|-------|-------|-------|--------|-------|
| Current      | A     | 89.3 | 97.2  | 126.6 | 153.5 | 190.5  |       |
| Torque       | Nm    | 0.0  | 285.8 | 572.8 | 861.2 | 1151.4 |       |
| Speed        | r/min | 750  | 748   | 747   | 745   | 743    |       |
| Efficiency   | %     | 0.0  | 88.1  | 92.6  | 93.4  | 93.4   |       |
| Power Factor | %     | 4.6  | 37.8  | 55.0  | 68.0  | 73.0   |       |

**Performance vs Load Chart**

**Motor Speed Torque Data**

| Load Point |       | LR    | P-Up  | BD    | Rated | NL   |
|------------|-------|-------|-------|-------|-------|------|
| Speed      | r/min | 0     | 150   | 684   | 743   | 750  |
| Current    | A     | 933.6 | 840.2 | 474.6 | 190.5 | 89.3 |
| Torque     | pu    | 1.9   | 1.6   | 2.1   | 1     | 0    |

**Starting Characteristics Chart**

**NOTE** Refer data sheet for applicable standard and tolerances on performance parameters

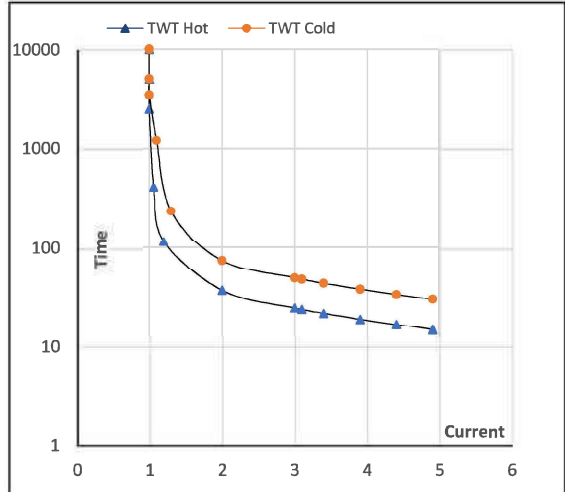
 Issued By  
Issued Date

**Model No. TCN0904A1141GAC010**

| Enclosure | U<br>(V) | $\Delta$ / Y<br>Conn | f<br>[Hz] | P<br>[kW] | P<br>[hp] | I<br>[A] | n<br>[rpm] | T<br>[kgm] | T<br>[Nm] | IE<br>Class | Amb<br>[°C] | Duty | Elevation<br>[m] | Inertia<br>[kg-m <sup>2</sup> ] | Weight<br>[kg] |
|-----------|----------|----------------------|-----------|-----------|-----------|----------|------------|------------|-----------|-------------|-------------|------|------------------|---------------------------------|----------------|
| TEFC      | 400      | $\Delta$             | 50        | 90        | 120.0     | 190.5    | 743        | 117.41     | 1151.38   | IE3         | 40          | S1   | 1000             | 5.6618                          | 922            |

**Motor Speed Torque Data**

| Load     | FL      | I <sub>1</sub> | I <sub>2</sub> | I <sub>3</sub> | I <sub>4</sub> | I <sub>5</sub> | LR  |     |
|----------|---------|----------------|----------------|----------------|----------------|----------------|-----|-----|
| TWT Hot  | s 10000 | 37             | 25             | 20             | 18             | 16             | 15  |     |
| TWT Cold | s 10000 | 74             | 49             | 42             | 36             | 32             | 30  |     |
| Current  | pu      | 1              | 2              | 3              | 3.5            | 4              | 4.5 | 4.9 |

**Thermal Characteristics Chart**

**NOTE** Refer data sheet for applicable standard and tolerances on performance parameters

 Issued By  
Issued Date

**REGAL**