

# PRODUCT INFORMATION PACKET



Model No: TCF82064E  
Catalog No: TCF82064E  
60,1200,TEFC,404TC,3/60/230/460

Regal and Century are trademarks of Regal Rexnord Corporation or one of its affiliated companies.  
©2023 Regal Rexnord Corporation, All Rights Reserved. MC017097E



**Nameplate Specifications**

Phase	3	Output HP	60 Hp
Voltage	230 / 460 V	Speed	1180 rpm
Service Factor	1.15	Frame	404TC
Enclosure	Totally Enclosed Fan Cooled	Thermal Protection	No Protection
Efficiency	94.5 %	Ambient Temperature	40 °C
Frequency	60 Hz	Current	148.0 / 74.0 A
Duty	Continuous	Insulation Class	F
Number of Speeds	1		

**Technical Specifications**

Poles	6	Mounting	F1
Drive End Bearing	Ball	Opp Drive End Bearing	Ball
Frame Material	Cast Iron	Shaft Type	Keyed
Shaft Diameter	2.875 in	Shaft Extension	7 in
Outline Drawing	TCF82064E-S01		

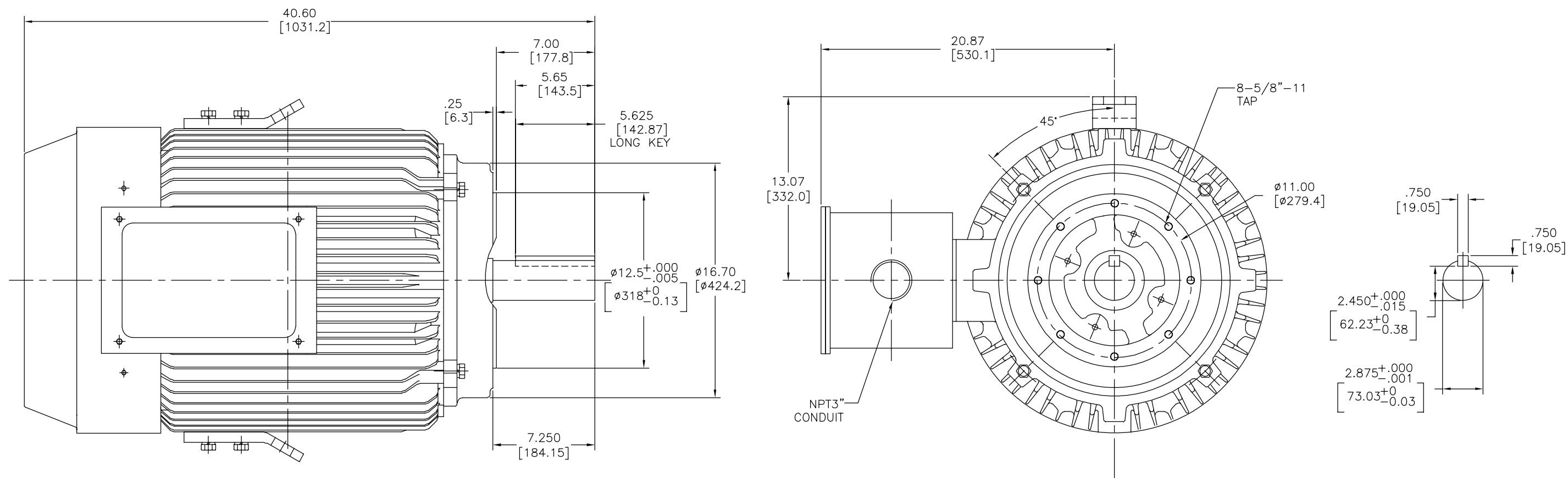
This is an uncontrolled document once printed or downloaded and is subject to change without notice. Date Created:10/26/2023

ENCLOSURE: TOTALLY ENCLOSED  
MOUNTING: FOOTLESS

## SQUIRREL-CAGE INDUCTION

COOLING: FAN COOLED


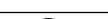
CAST IRON FRAME  
FRAME 404TC



1. APPROXIMATE WEIGHT = 60 HP. 6P - 1380 LBS.

2. DRIVE END BEARING 6218  $\triangle$   
OPPOSITE DRIVE END BEARING 6313

3. INTERNAL VOLUMEN OF CONDUIT BOX 982 IN<sup>3</sup>

GEOMETRIC CHARACTERISTICS & SYMBOLS ▮ FLATNESS ▮ STRAIGHTNESS ▮ ANGULARITY ▮ PERPENDICULARITY (SQUARENESS) ▮ PARALLELISM ▮ ROUNDNESS (CIRCULARITY) ▮ CYLINDRICITY ▮ PROFILE OF ANY SURFACE ▮ PROFILE OF ANY LINE ▮ RUNOUT ▮ TRUE POSITION ▮ CHIRALITY ▮ SYMMETRY	UNLESS OTHERWISE SPECIFIED DIM. TOLERANCES ARE AS FOLLOWS: INCH .X .XX .XXX INCH $\pm .1$ $\pm .02$ $\pm .005$ $\pm .0005$ mm $\pm 0.5$ $\pm 0.13$ $\pm 0.013$ ANG. $\pm 0.5$ DEG REMOVE BURRS & BREAK SHARP EDGES: INCH .003-.15 mm 0.1-.04 CORNER FILLETS TO: INCH .020 mm 0.5 MACHINE SURFACES: INCH $\frac{1}{32}$ mm $\frac{3}{32}$	DR BY: Daniel Muñoz APPD: 08-24-2010	THIRD ANGLE PROJECTION  EDS DATE 11-11-2011 FORMAT REV G	<div style="text-align: right;">  <b>REGAL-BELOIT CORPORATION</b> </div> <div style="text-align: center;"> <h1>OUTLINE</h1> </div>
ASME Y14.5M, 1994	METRIC DIMS. SHOWN IN [BRACKETS]	CONFIDENTIAL: THIS DRAWING AND ITS INFORMATION ARE THE EXCLUSIVE AND CONFIDENTIAL PROPERTY OF REGAL-BELOIT CORPORATION AND ARE NOT TO BE DISCLOSED, DUPLICATED, DISTRIBUTED OR OTHERWISE USED WITHOUT THE WRITTEN CONSENT OF REGAL-BELOIT CORPORATION. ALL RIGHTS RESERVED.	SIZE D DWG NO TCF82064E	SCALE NONE SHEET 1

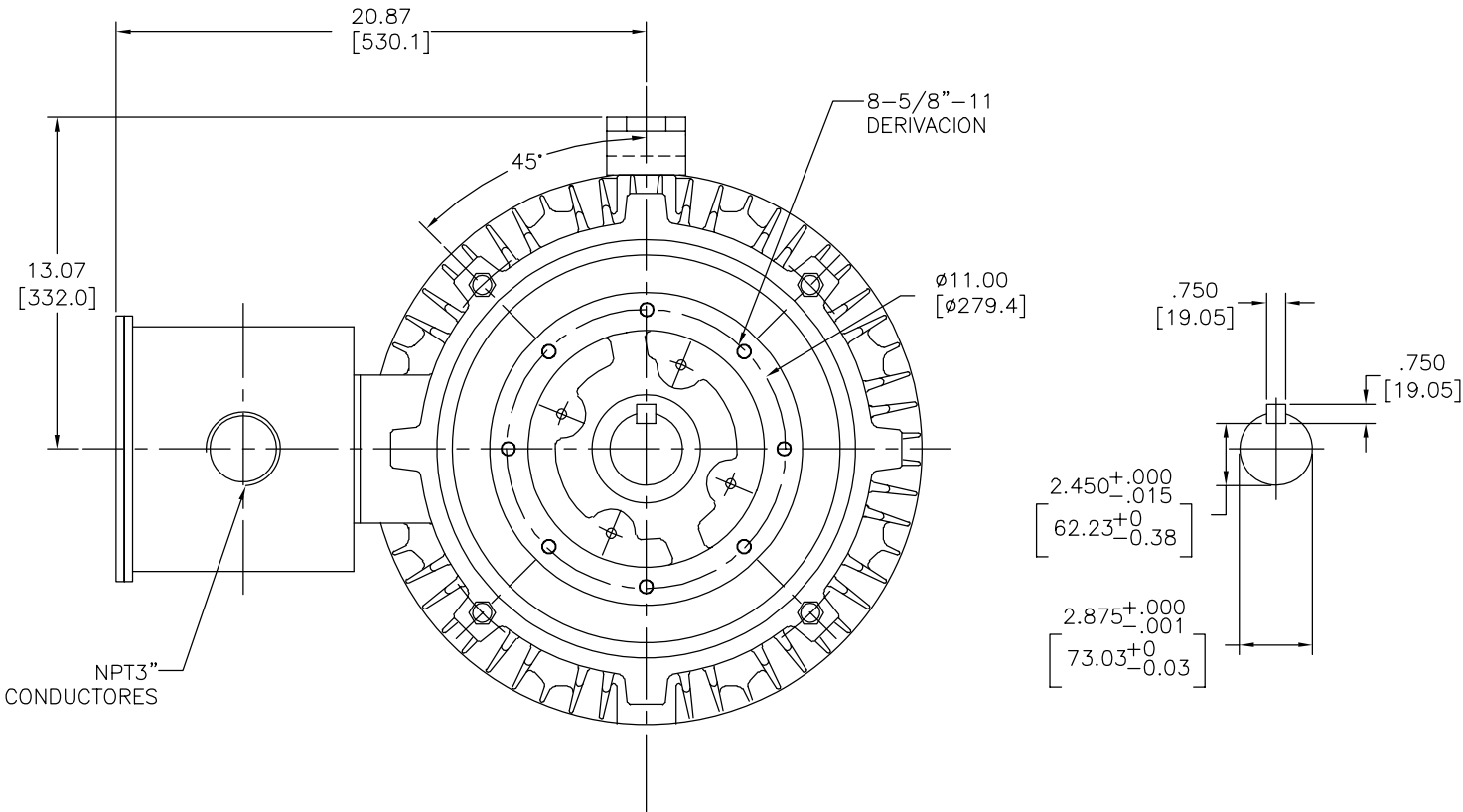
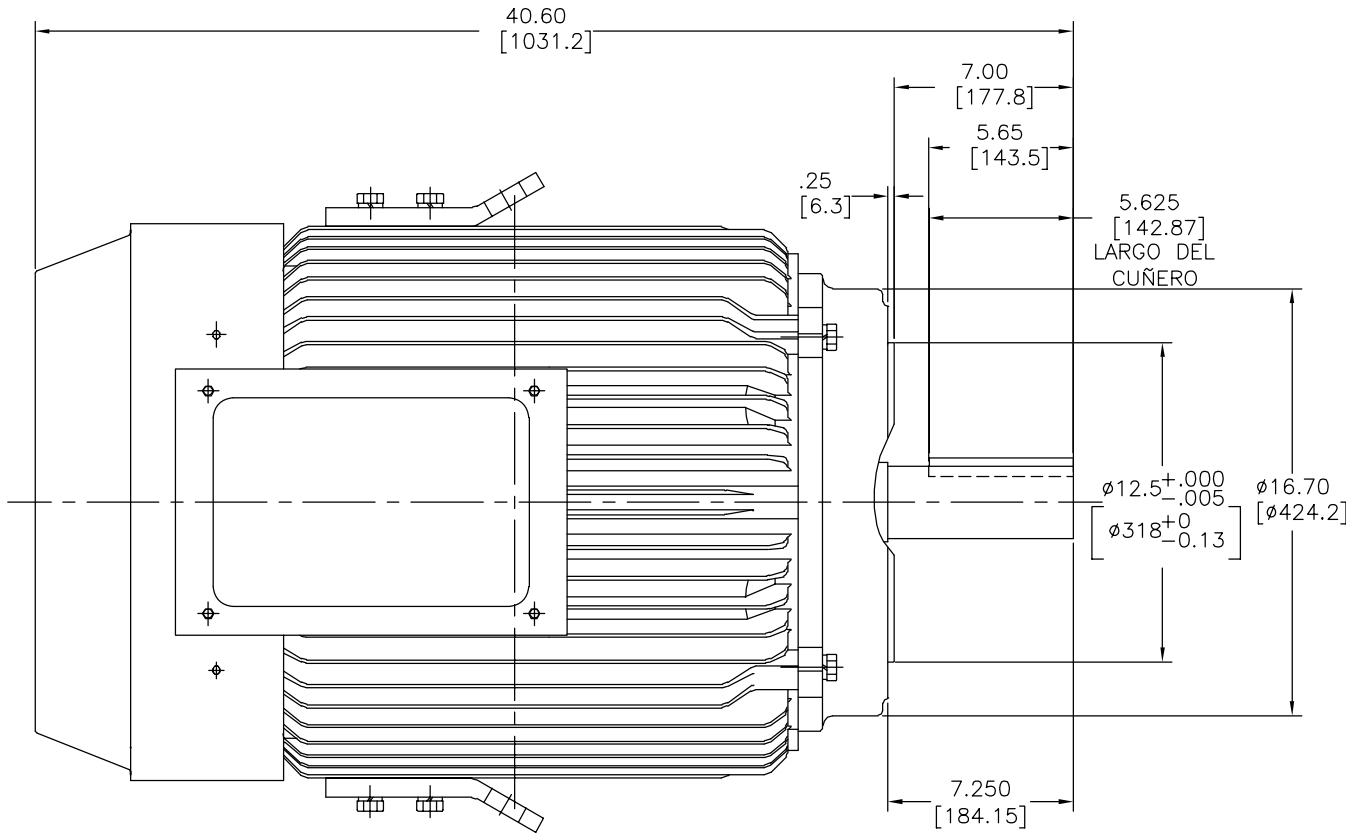
REVISION:	ECO	REVISADO POR:	FECHA:	APROBADO POR:	FECHA:
B	0025416	A.CHEN	04-18-2012	B.SHEN	04-18-2012

MOTORES DE CORRIENTE ALTERNA

ENCERRADO: TOTALMENTE ENCERRADO  
MONTAJE: SIN BASE

ANTENA DE INDUCCION DE  
JAULA DE ARDILLA  
CARCAZA DE HIERRO FUNDIDO  
CARCAZA 404TC

ENFRIAMIENTO: ABANICO ENFRIADOR

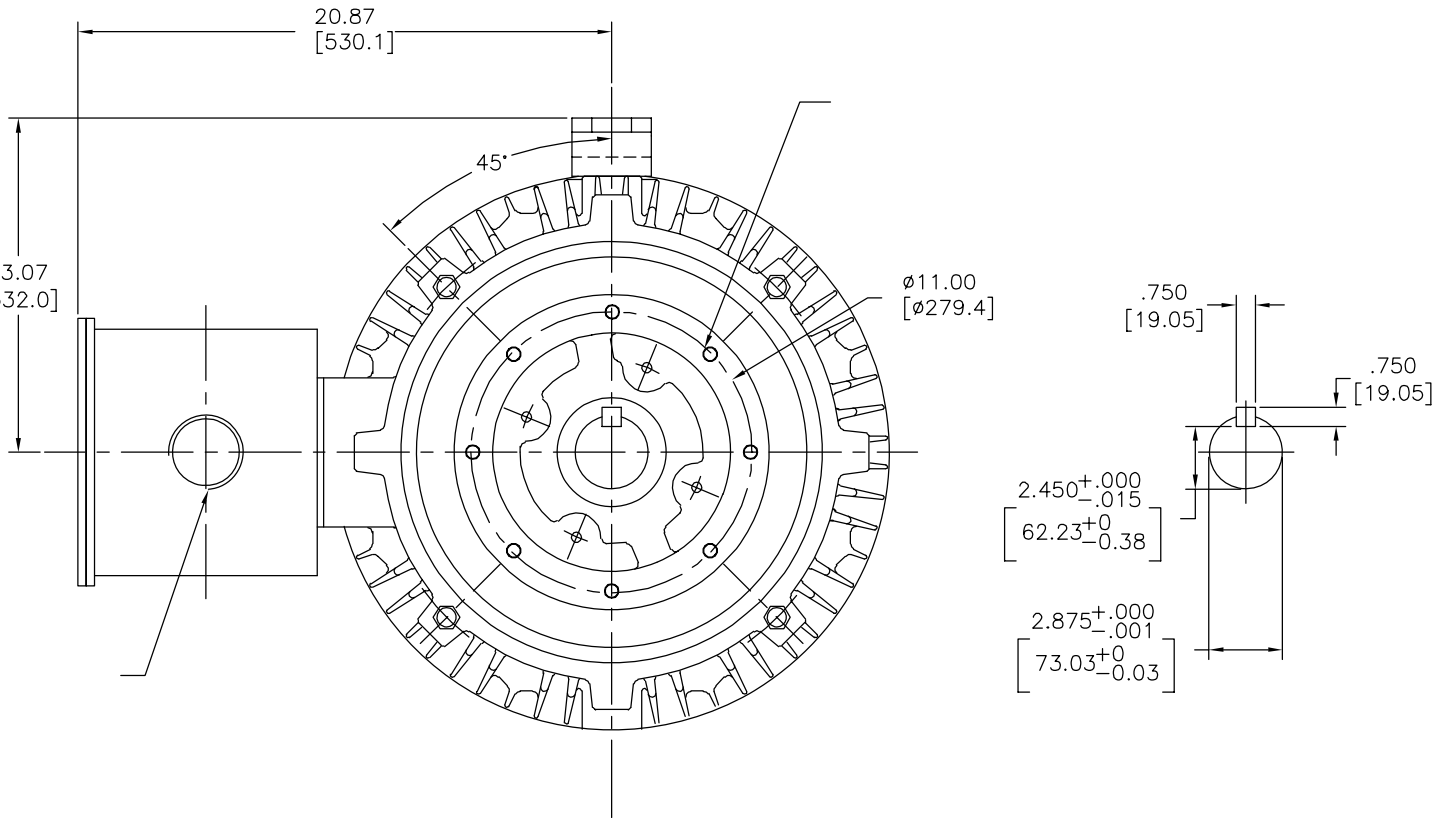
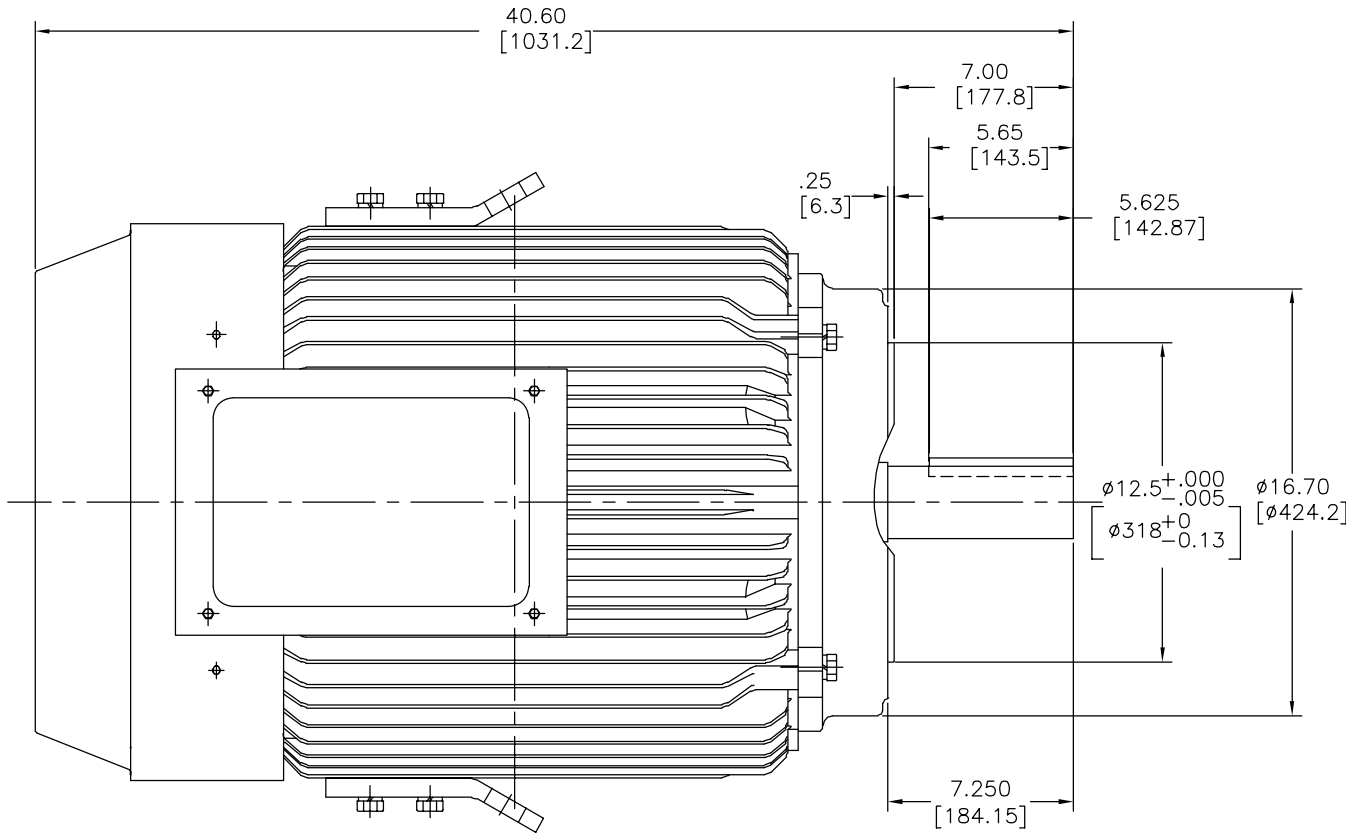


NOTAS

1. PESO APROXIMADO = 60 HP. 6P - 1380LBS
2. BALERO DEL LADO MOTRIZ 6218△  
BALERO DEL LADO MOTRIZ OPUESTO 6313
3. VOLUMEN INTERNO DE LA CAJA DE CONEXIONES 982 IN<sup>3</sup>

CARACTERISTICAS DE GEOMETRIA Y SIMBOLOS — PLANICIDAD — RECTITUD — ANGULARIDAD — PERPENDICULARIDAD (A ESCUADRA) // PARALELISMO ○ REDONDEZ (CIRCULARIDAD) H CILINDRICIDAD △ PERFIL DE CUALQUIER SUPERFICIE ^ PERFIL DE CUALQUIER LINEA + VARIACION ● POSICION REAL ◎ CONCENTRICIDAD = SIMETRIA	A MENOS QUE SE ESPECIFIQUE DE OTRA MANERA, LAS TOLERANCIAS DE LAS DIMS. SON LAS SIGUIENTES: PULG. ±.1 ±.02 ±.005 ±.0005 mm ±0.5 ±0.13 ±0.013 ANG. ±.50 GRADOS ELIMINAR REBABAS Y ORILLAS FILOSAS DEL BORDE. PULG. .003-.015 mm 0.1-0.4 FILETEAR ESQUINA: PULG. .020 mm 0.5 MAQUINAR SUPERFICIES PULG. 125 mm 3.2	DIBUJADO POR: Daniel Muñoz 08-24-2010 APROBADO POR: TERCER ANGULO DE PROYECCION FECHA EDS: 11-11-2011 REV. FORMATO: G	DESCRIPCION: OUTLINE TAMAÑO: D NUMERO DE DIBUJO: TCF82064E ESCALA: NONE HOJA: 1

版本	ECO	编制	日期	批准	日期
B	0025416	A.CHEN	04-18-2012	B.SHEN	04-18-2012



形位公差	除另有注明 尺寸公差如下:
平面度	XX XXX XXXX
直线度	英寸 ±.1 ±.02 ±.005 ±.0005
倾斜度	毫米 ±0.5 ±0.13 ±0.013
垂直度	角度 ±.50 度
平行度	清理毛刺和尖棱
圆度	英寸 .003-.015 毫米 0.1-0.4
圆柱度	内圆角
面轮廓度	英寸 .020 毫米 0.5
轮廓度	表面粗糙度
圆跳动	英制 125 米制 3.2
位置度	同轴度
对称度	ASME Y14.5M 1994

除另有注明 尺寸公差如下:	XX XXX XXXX
英寸 ±.1 ±.02 ±.005 ±.0005	
毫米 ±0.5 ±0.13 ±0.013	
角度 ±.50 度	
清理毛刺和尖棱	
英寸 .003-.015 毫米 0.1-0.4	
内圆角	
英寸 .020 毫米 0.5	
表面粗糙度	
英制 125 米制 3.2	
ASME Y14.5M 1994	

绘图:	Daniel Muñoz	08-24-2010
批准:		
第三角投影		图底格式发布日期 11-11-2011 图底格式版本 G
机密: 本图纸及相关信息所有权归REGAL-BELOIT CORPORATION 未经REGAL-BELOIT CORPORATION书面授权, 不得泄露、 复制、传播或作其他用途。--版权所有		

名称	OUTLINE
图幅	D
图号	TCF82064E
比例	NONE
页号	1