

PRODUCT INFORMATION PACKET



Model No: TCF82062E
Catalog No: TCF82062E
40,1200,TEFC,364TC,3/60/230/460

Regal and Century are trademarks of Regal Rexnord Corporation or one of its affiliated companies.
©2023 Regal Rexnord Corporation, All Rights Reserved. MC017097E



**Nameplate Specifications**

Phase	3	Output HP	40 Hp
Voltage	230 / 460 V	Speed	1180 rpm
Service Factor	1.15	Frame	364TC
Enclosure	Totally Enclosed Fan Cooled	Thermal Protection	No Protection
Efficiency	94.1 %	Ambient Temperature	40 °C
Frequency	60 Hz	Current	96.0 / 48.0 A
Duty	Continuous	Insulation Class	F
Number of Speeds	1		

Technical Specifications

Poles	6	Rotation	Reversible
Mounting	Round	Drive End Bearing	Ball
Opp Drive End Bearing	Ball	Frame Material	Cast Iron
Shaft Type	Keyed	Shaft Diameter	2.375 in
Shaft Extension	5.62 in		
Outline Drawing	TCF82062E-S01		

This is an uncontrolled document once printed or downloaded and is subject to change without notice. Date Created:10/26/2023

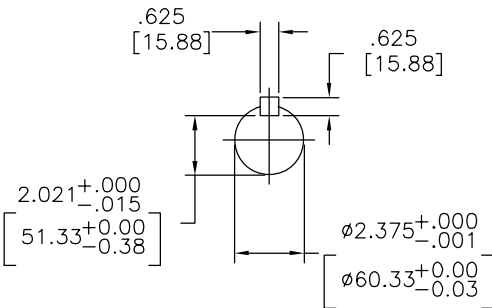
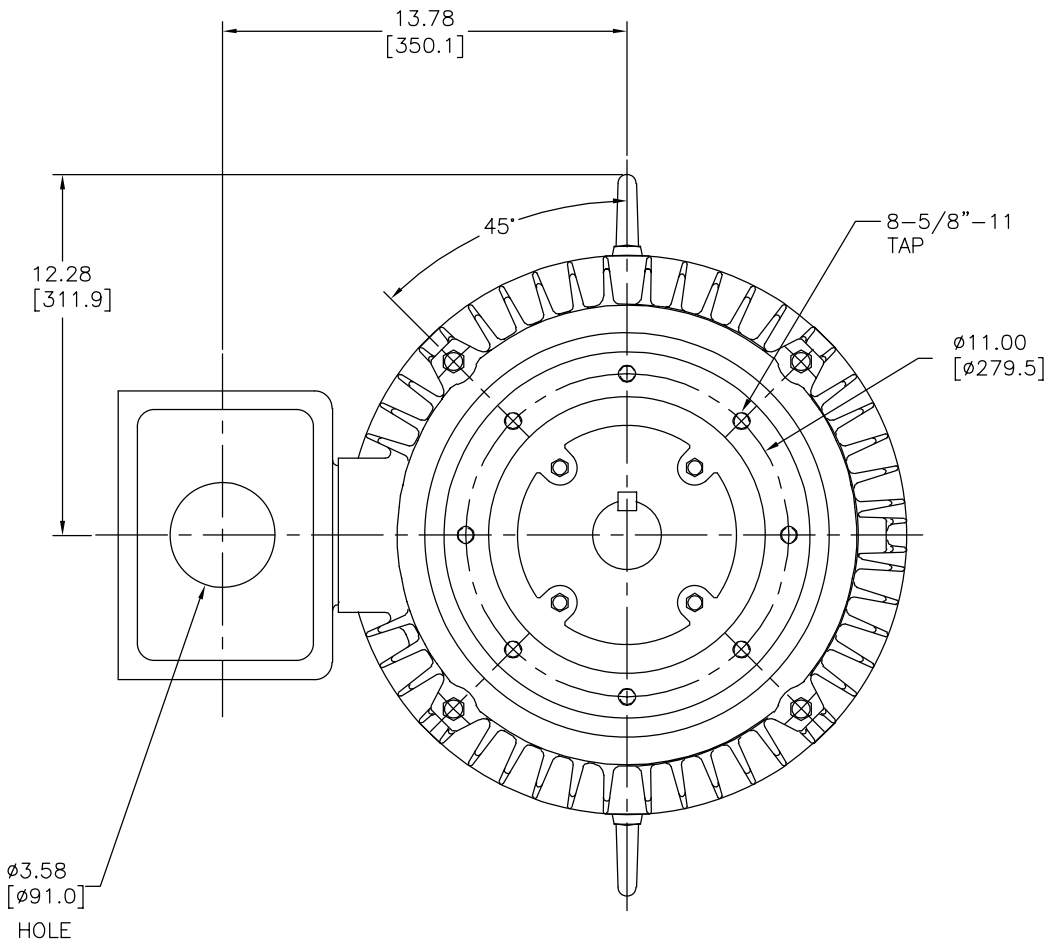
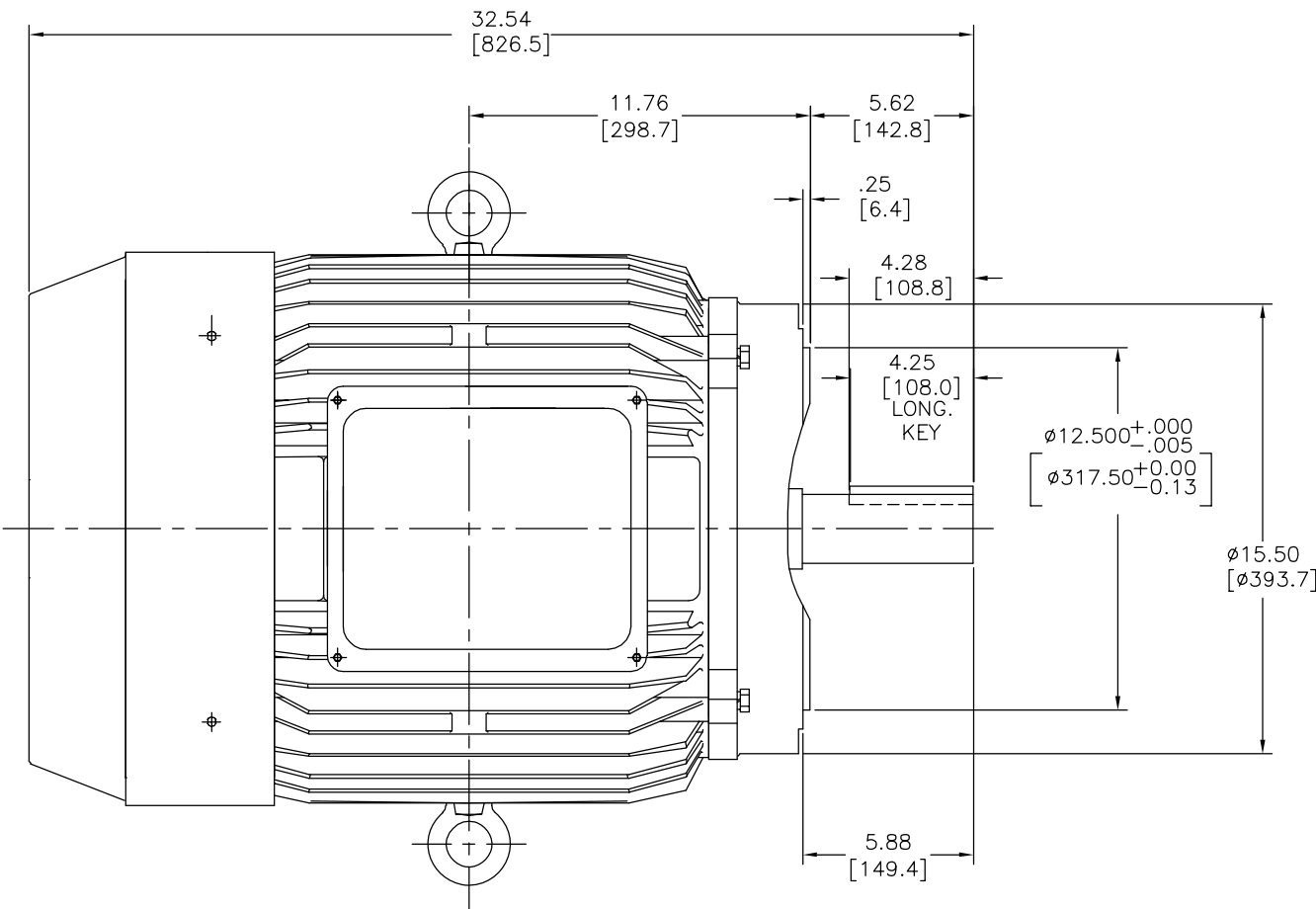
REV	ECO	REV BY	DATE	APPD	DATE
A	0015012	Daniel Muñoz	08-24-2010	Mario Arguelles	08-24-2010


ALTERNATING CURRENT MOTORS

SQUIRREL-CAGE INDUCTIONS
CAST IRON FRAME
FRAME 364TC

COOLING: FAN COOLED

ENCLOSURE: TOTALLY ENCLOSED
MOUNTING: FOOTLESS



- NOTES:
1. APPROXIMATE WEIGHT = 60HP, 4P, -902 LBS.
= 40HP, 6P, -802 LBS.
 2. DRIVE END BEARING 6215 
OPPOSITE DRIVE END BEARING 6312
 3. INTERNAL VOLUME OF CONDUIT BOX= 550 CU, IN.

GEOMETRIC CHARACTERISTICS & SYMBOLS		UNLESS OTHERWISE SPECIFIED DIM. TOLERANCES ARE AS FOLLOWS:		DR BY: Daniel Muñoz		08-24-2010		ACSmith Innovation has a name.		ELECTRICAL PRODUCTS COMPANY	
— FLATNESS		INCH $\pm .1$ $\pm .02$ $\pm .005$ $\pm .0005$		APPD:		EDS DATE		DESCRIPTION		OUTLINE	
— STRAIGHTNESS		mm ± 0.5 ± 0.13 ± 0.013		THIRD ANGLE PROJECTION		FORMAT REV		SIZE		DWG NO	
— ANGULARITY		ANG. $\pm .50$ DEG		REMOVE BURRS & BREAK SHARP EDGES:		CONFIDENTIAL: THIS DRAWING AND ITS INFORMATION ARE THE EXCLUSIVE AND CONFIDENTIAL PROPERTY OF A.O. SMITH CORP. AND ARE NOT TO BE DISCLOSED, DUPLICATED, DISTRIBUTED OR OTHERWISE USED WITHOUT THE WRITTEN CONSENT OF A.O. SMITH CORP. —ALL RIGHTS RESERVED.		SCALE		SHEET	
— PERPENDICULARITY (SQUARENESS)		CORNER FILLETS TO:		INCH $\pm .003$ $\pm .015$ mm 0.1-0.4		ASME Y14.5M 1994		NONE		1	
— PARALLELISM		MACHINE SURFACES:		INCH $\pm .020$ mm 0.5							
— ROUNDNESS (CIRCULARITY)		METRIC DIMS. SHOWN IN [BRACKETS]									
— CYLINDRICITY											
— PROFILE OF ANY SURFACE											
— PROFILE OF ANY LINE											
— RUNOUT											
— TRUE POSITION											
— CONCENTRICITY											
— SYMMETRY											

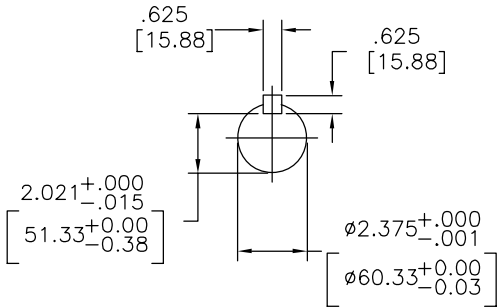
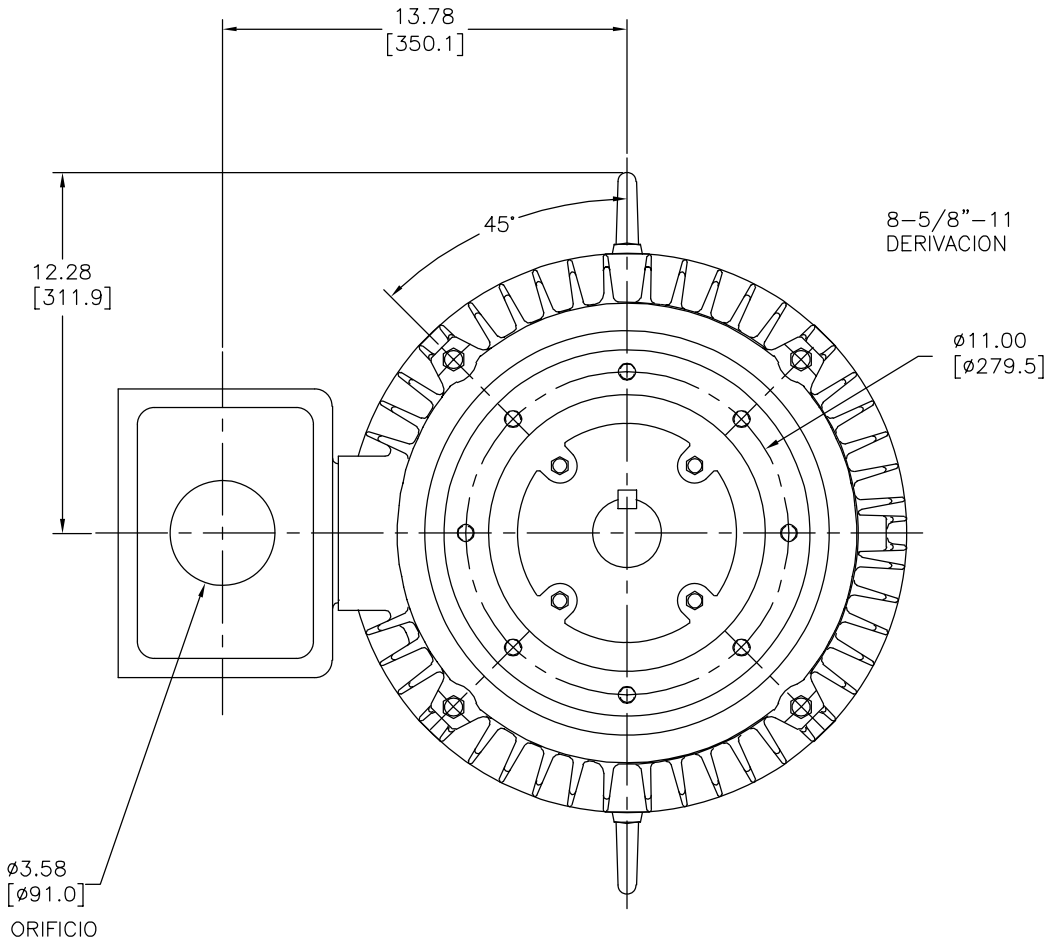
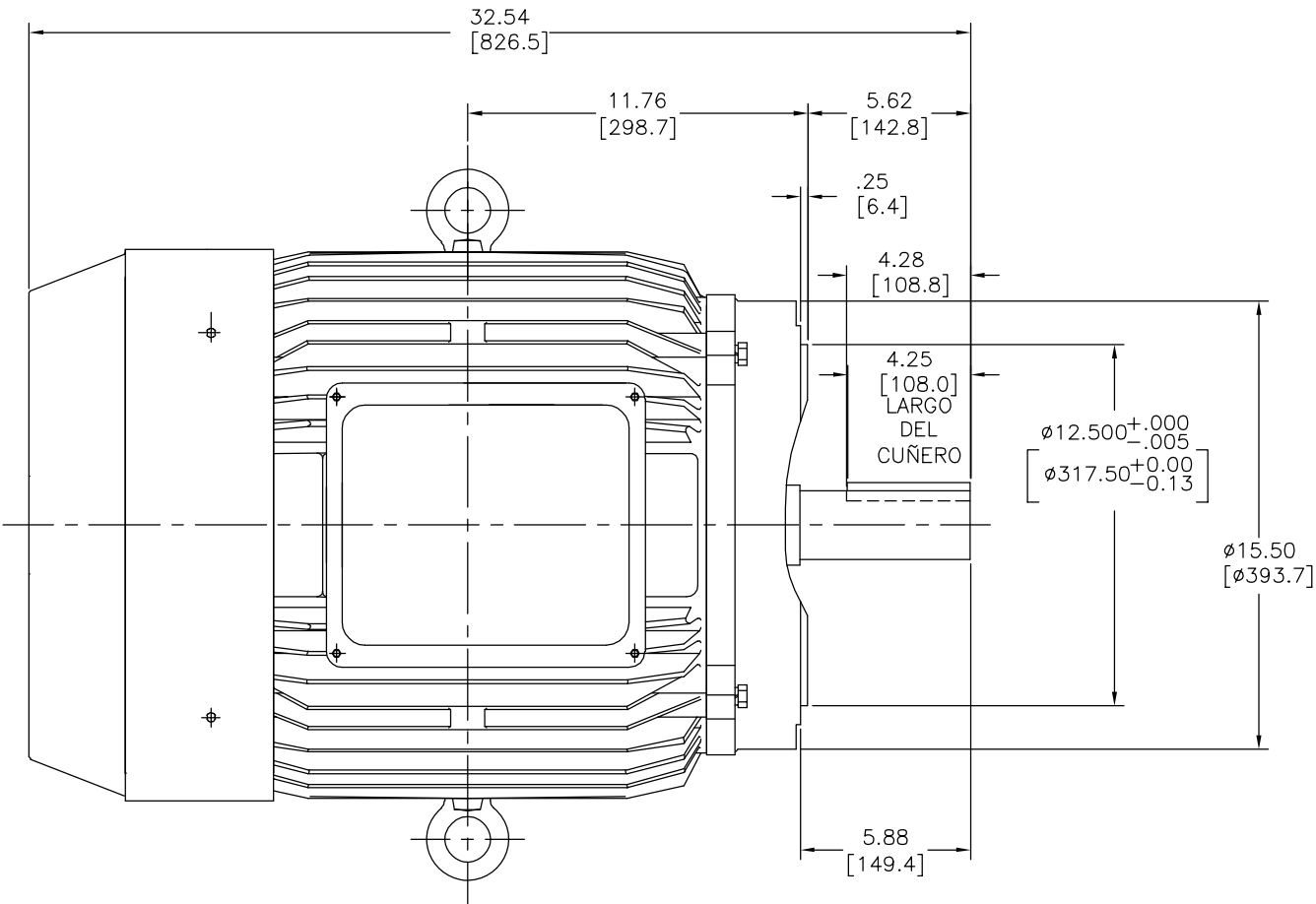
REVISION:	ECO	REVISADO POR:	FECHA:	APROBADO POR:	FECHA:
A	0015012	Daniel Muñoz	08-24-2010	Mario Arguelles	08-24-2010

MOTORES DE CORRIENTE ALTERNA

ENCERRADO: TOTALMENTE ENCERRADO
MONTAJE: SIN BASE

ANTENA DE INDUCCION DE
JAULA DE ARDILLA
CARCAZA DE HIERRO FUNDIDO
CARCAZA 364TC

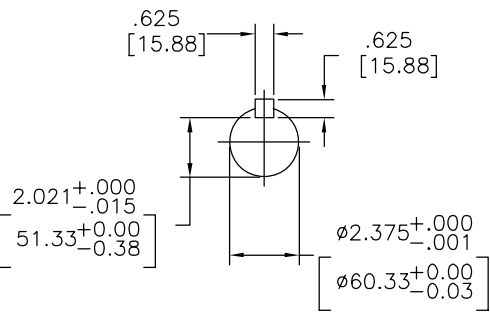
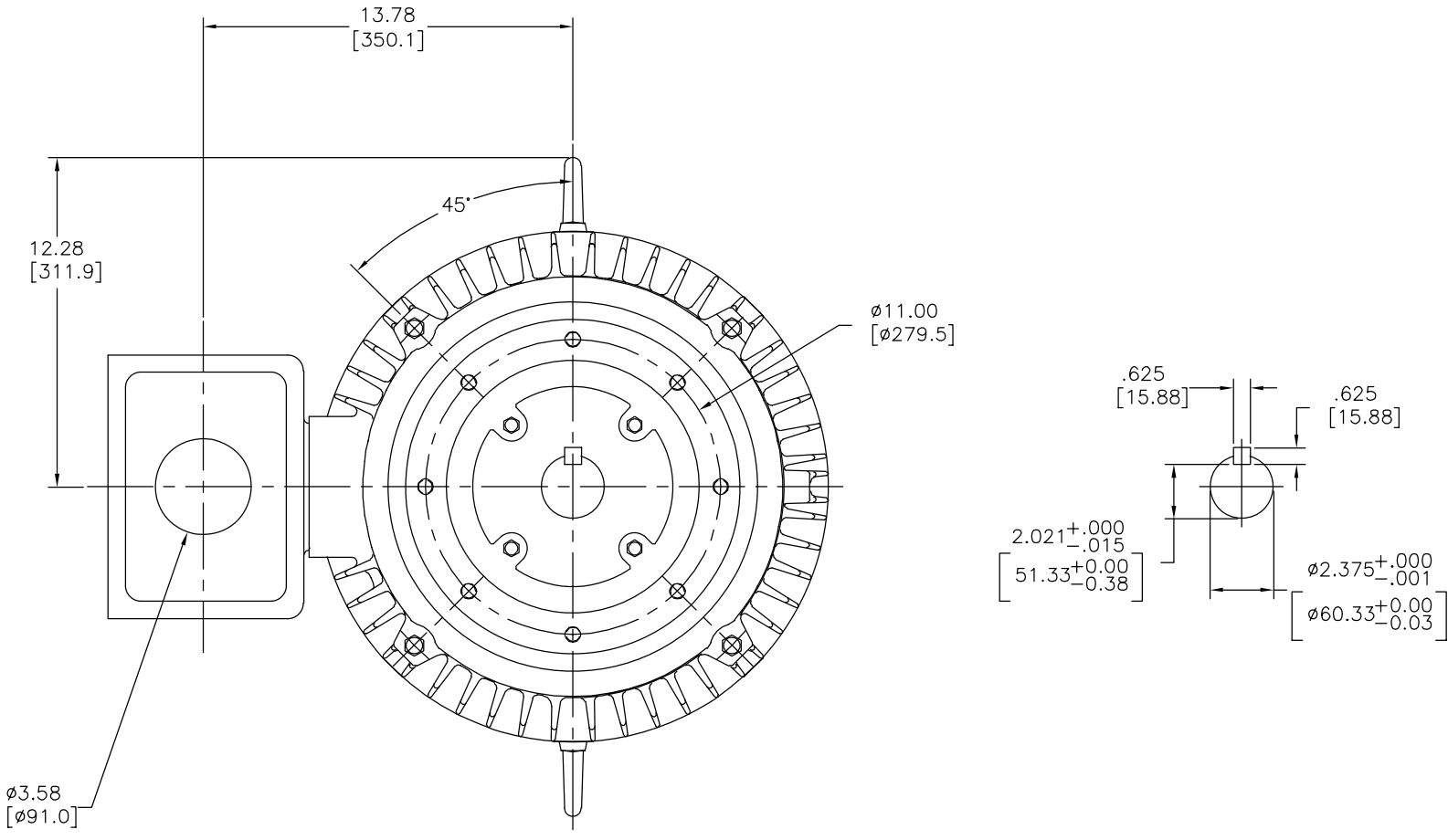
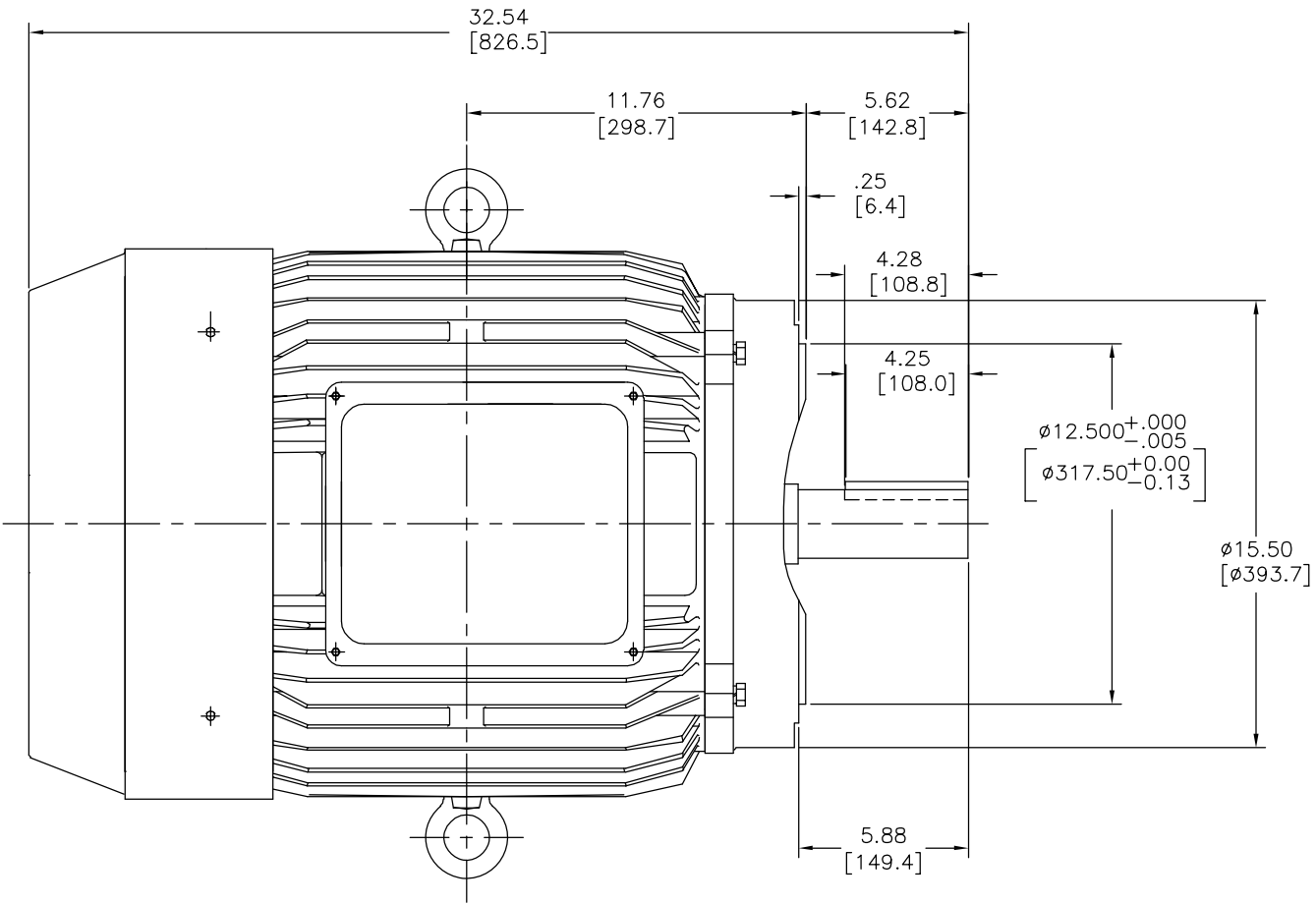
ENFRIAMIENTO: ABANICO ENFRIADOR



- NOTAS
1. PESO APROXIMADO = 60 HP. 4P - 902LBS
= 40 HP, 6P - 802 LBS
 2. BALERO DEL LADO MOTRIZ 6215 Δ
BALERO DEL LADO MOTRIZ OPUESTO 6312
 3. VOLUMEN INTERNO DE LA CAJA DE CONEXIONES 550 IN³

CARACTERISTICAS DE GEOMETRIA Y SIMBOLOS — RECTITUD — ANGULARIDAD — PERPENDICULARIDAD (A ESCUADRA) — PARALELISMO — REDONDEZ (CIRCULARIDAD) — CILINDRICIDAD — PERFIL DE CUALQUIER SUPERFICIE — PERFIL DE CUALQUIER LINEA — VARIACION — POSICION REAL — CONCENTRICIDAD — SIMETRIA	A MENOS QUE SE ESPECIFIQUE DE OTRA MANERA, LAS TOLERANCIAS DE LAS DIMS. SON LAS SIGUIENTES: PULG. $\pm .1$ $\pm .02$ $\pm .005$ $\pm .0005$ mm ± 0.5 ± 0.13 ± 0.013 ANG. ± 50 GRADOS ELIMINAR REBASAS Y ORILLAS FILOSAS DEL BORDE. PULG. .003-.015 mm 0.1-0.4 FILETEAR ESQUINA: PULG. .020 mm 0.5 MAQUINAR SUPERFICIES PULG. 125 mm 3.2 DIMS METRICAS MOSTRADAS [PARENTESIS]	DIBUJADO POR: Daniel Muñoz APROBADO POR: FECHA EDS: EDS DATE REV. FORMATO: F	CONFIDENCIAL: ESTE DIBUJO Y SU INFORMACION SON PROPIEDAD DE USO EXCLUSIVO Y CONFIDENCIAL DE A.O.SMITH CORP. Y NO DEBERAN SER REVELADOS, DUPLICADOS, DISTRIBUIDOS O USARSE DE OTRA MANERA SIN EL CONSENTIMIENTO ESCRITO DE A.O. SMITH CORP. -TODOS LOS DERECHOS RESERVADOS.ASME Y14.SM 1994	DESCRIPCION: OUTLINE	
				TAMAÑO: D	NUMERO DE DIBUJO: TCF82062E
				ESCALA: NONE	HOJA: 1

版本	ECO	编制	日期	批准	日期
A	0015012	Daniel Muñoz	08-24-2010	Mario Arguelles	08-24-2010



形位公差 尺寸公差如下: X XX XXX XXXX 英寸 ±.1 ±.02 ±.005 ±.0005 毫米 ±0.5 ±0.13 ±0.013 角度 ±.50 度 清理毛刺和尖棱 英寸 .003-.015 毫米 0.1-0.4 内圆角 英寸 .020 毫米 0.5 表面粗糙度 英制 125 米制 3.2 米制尺寸显示在[]
--

绘图:	Daniel Muñoz	08-24-2010
批准:		
第三角投影		图底格式发布日期 EDS DATE 图底格式版本 F
机密: 本图纸及相关信息所有权归A. O. SMITH公司所有。 未经A. O. SMITH公司书面授权, 不得泄露、复制、传播或作 其他用途。--版权所有		
ASME Y14.5M 1994		

 Innovation has a name.		ELECTRICAL PRODUCTS COMPANY A DIVISION OF A. O. SMITH CORPORATION	
名称 OUTLINE			
图幅 D	图号 TCF82062E		
比例 NONE		页号 1	