

PRODUCT INFORMATION PACKET

marathon®
Motors

Model No: TCA0221AE211GAA009

Catalog No: R342B

Cast Iron Motor, 30 & 25 HP, 3 Ph, 60 & 50 Hz, 230/460 & 200/400 V, 3600 & 3000 RPM, 180M Frame,
TEFC



Regal and Marathon are trademarks of Regal Rexnord Corporation or one of its affiliated companies.

©2023 Regal Rexnord Corporation, All Rights Reserved. MC017097E

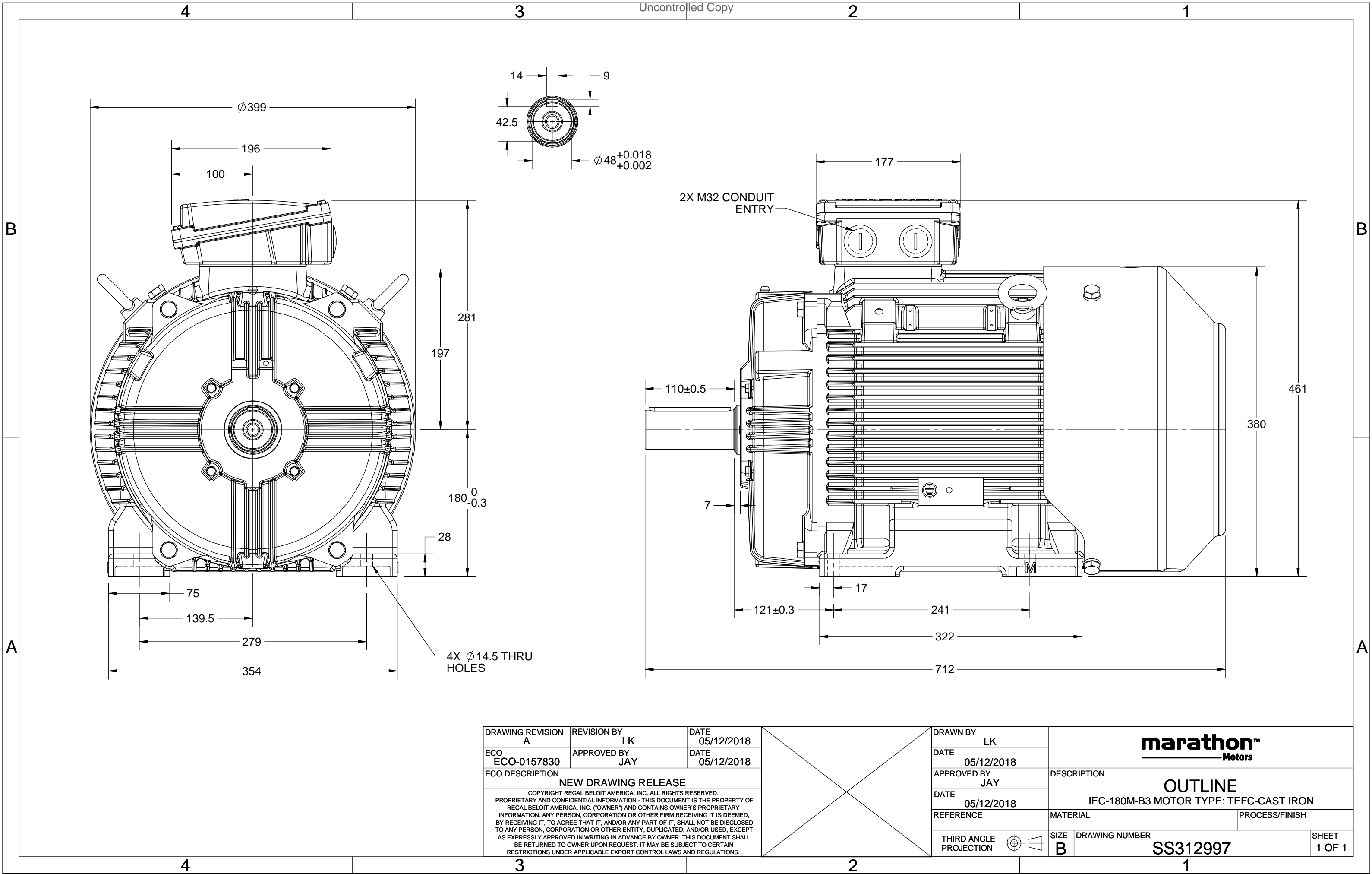
RegalRexnord

Nameplate Specifications

Phase	3	Output HP	30 & 25 Hp
Output KW	22.0 & 18.5 kW	Voltage	230/460 & 200/400 V
Speed	3550 & 2955 rpm	Service Factor	1.15 & 1.15
Frame	180M	Enclosure	Totally Enclosed Fan Cooled
Thermal Protection	No Protection	Efficiency	91.7 & 92.4 %
Ambient Temperature	40 °C	Frequency	60 & 50 Hz
Current	68/34 & 68/34 A	Power Factor	88
Duty	Continuous	Insulation Class	F
Design Code	N (IEC)	KVA Code	F
Drive End Bearing Size	6311	Opp Drive End Bearing Size	6211
UL	Recognized	CSA	N
CE	Y	IP Code	55
Number of Speeds	1	Efficiency Class	IE3

Technical Specifications

Electrical Type	Squirrel Cage Inverter Rated	Starting Method	Line Or Inverter
Poles	2	Rotation	Reversible
Resistance Main	.37 Ohms	Mounting	B3
Motor Orientation	Horizontal	Drive End Bearing	Ball
Opp Drive End Bearing	Ball	Frame Material	Cast Iron
Shaft Type	IEC	Overall Length	28.03 in
Frame Length	12.91 in	Shaft Diameter	1.890 in
Shaft Extension	4.33 in	Assembly/Box Mounting	F3
Inverter Load	CONSTANT 2:1/VARIABLE 10:1		
Connection Drawing	8442000715	Outline Drawing	SS312997



COPYRIGHT REGAL BELOIT AMERICA, INC. ALL RIGHTS RESERVED.
 PROPRIETARY AND CONFIDENTIAL INFORMATION - THIS DOCUMENT IS THE PROPERTY OF
 REGAL BELOIT AMERICA, INC. ("OWNER") AND CONTAINS OWNER'S PROPRIETARY
 INFORMATION. ANY PERSON, CORPORATION OR OTHER FIRM RECEIVING IT IS DEEMED,
 BY RECEIVING IT, TO AGREE THAT IT, AND/OR ANY PART OF IT, SHALL NOT BE DISCLOSED
 TO ANY PERSON, CORPORATION OR OTHER ENTITY, DUPLICATED, AND/OR USED, EXCEPT
 AS EXPRESSLY APPROVED IN WRITING IN ADVANCE BY OWNER. THIS DOCUMENT SHALL
 BE RETURNED TO OWNER UPON REQUEST. IT MAY BE SUBJECT TO CERTAIN
 RESTRICTIONS UNDER APPLICABLE EXPORT CONTROL LAWS AND REGULATIONS.

DRAWING REVISION
A
 ECO
 ECO-0194685
 ECO DESCRIPTION

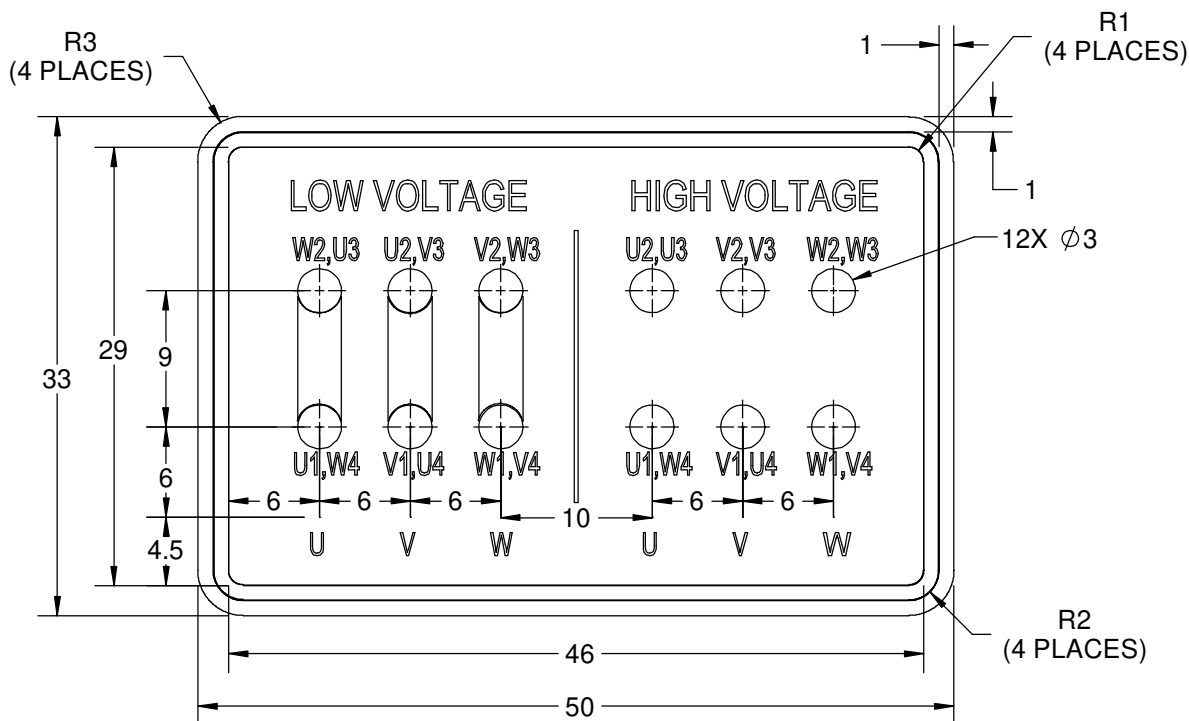
REVISION BY
S.MUDDA
 APPROVED BY
SUMANTA

DATE
 16/11/2020
 DATE
 16/11/2020

NEW DRAWING

GEOMETRIC TOLERANCE

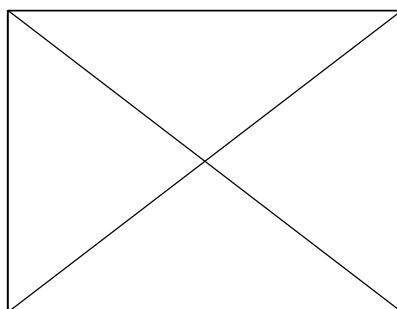
LINEAR DIM	>0~6	±0.1
	>6~30	±0.2
	>30~120	±0.3



NOTES:

1. PRESSURE-SENSITIVE ADHESIVE COATED PAPER ON THE BACK OF SELF-ADHESIVE.
2. AT THE END OF YELLOW, WORDS, SYMBOLS, LETTERS ARE BLACK, BORDER IS BLACK.
3. THE TOLERANCE OF THE LINEAR SIZE OF THE TOLERANCE WITHOUT THE TOLERANCE BY THE TABLE.
4. LEAD TERMINAL MARKINGS FONT SIZE : T1-T12 & U1-U4,V1-V4& W1-W4 OF ARIAL WITH 3mm SIZE
5. OTHER LETTER FONT SIZE SHOULD BE 3.5mm.

8WD.442.2017



DRAWN BY
S.MUDDA
 DATE
 16/11/2020
 APPROVED BY
SUMANTA
 DATE
 16/11/2020
 REFERENCE

THIRD ANGLE
 PROJECTION



Regal Beloit America, Inc.

DESCRIPTION

CONN DIAGRAM-NAMEPLATE

MATERIAL

PROCESS/FINISH

SIZE
A

DRAWING NUMBER

8442000715

SHEET
 1 OF 1



P.O. BOX 8003
WAUSAU, WI 54401-8003
PH. 715-675-3311

DATA VOLTS: 460

CERTIFICATION DATA SHEET

CUSTOMER: _____
ORDER #: _____
CONN. DIAGRAM: 8442000677
OUTLINE: SS312997
WINDING: IE3L1802201 NONE 1
SPEED: _____

CUSTOMER P.O. #: _____
REFERENCE MODEL #: TCA0221AE211GAA009
CAT #: R342B
CUSTOMER PART #: _____
MOUNTING: F3

TYPICAL MOTOR PERFORMANCE DATA

HP	KW	SYNC RPM	FL RPM	FRAME	ENCLOSURE	TYPE	KVA CODE	DESIGN
30	22.4	3600	3550	180M	TEFC	TCA 180MA02	F	N

PH	HZ	VOLTS	AMPS	START TYPE	DUTY	INSL	S.F.	AMB (* C)	ELEV.(Ft.)
3	60/50	230/460#200/400	68/34&68/34	LINE OR INVERTER	CONT	F	1.15	40	3300

F.L. EFF	91.7	3/4 LD EFF	91.7	1/2 LD EFF	91.4	GTD EFF	ELECT. TYPE
F.L. PF	88.0	3/4 LD PF	84.0	1/2 LD PF	77.0	90.5	SQ CAGE INV RATED

F.L. TORQUE	LR AMPS @ 460 V	L.R. TORQUE	B.D. TORQUE	F.L. RISE (* C)
44.4 LB-FT	207	65.0 LB-FT 146%	113 LB-FT 255%	80

SOUND PRESSURE @ 3 FT.	SOUND POWER	ROTOR WK ²	MAX. LOAD WK ²	SAFE STALL TIME	STARTS/HOUR	APROX.	MOTOR WGT
76 dBA	85 dBA	2.81 LB-FT ²	2.81 LB-FT ²	15 SEC.	2	199	KG.

*** SUPPLEMENTAL INFORMATION ***

DE BRACKET TYPE	ODE BRACKET TYPE	MOUNT TYPE	MOTOR ORIENTATION	SEVERE DUTY	HAZARDOUS LOCATION	DRIP COVER	SCREENS	PAINT
STANDARD	STANDARD	B3	HORIZONTAL	NO	NONE	NO	NONE	BLUE (ENAMEL)

BEARINGS	GREASE	SHAFT TYPE	SPECIAL DE	SPECIAL ODE	SHAFT MATERIAL	FRAME MATERIAL
DE ODE						
BALL BALL	POLYREX EM	STANDARD IEC	NONE	NONE	1045 HOT ROLLED (C-204)	CAST IRON
6311 6211						

THERMOSTATS	PROTECTORS	WDG RTD's	BRG RTD's	THERMISTORS	CONTROL	SPACE HEATERS
NONE	NOT	NONE	NONE	NONE	FALSE	NA

R1 (ohms/ph)	R2 (ohms/ph)	X1 (ohms/ph)	X2 (ohms/ph)	Xm (ohms/ph)	VIBRATION (in/sec)	FLOAT
0.236	0.113	0.662	0.766	23.146	0.150	ODE

* N O T E S *					INVERTER TORQUE: CONSTANT 2:1/VARIABLE 10:1
					INV. HP SPEED RANGE: NONE
					ENCODER: NONE
					NONE
					NONE PPR

PREPARED BY: _____	BRAKE: NONE
DATE: 11/10/2020	NONE
	FT-LB: NA
	VOLTAGE: NONE
FORM: 3531 REV_4 2/27/06	UL: V - LI,ME-INS,CONST UL REC

REGAL®

Data Sheet

TCA0221AE211GAA009

Date: 5/29/2019
Customer: _____
Attention: _____

Submitted by: Fareeda Dudekula

Submittal

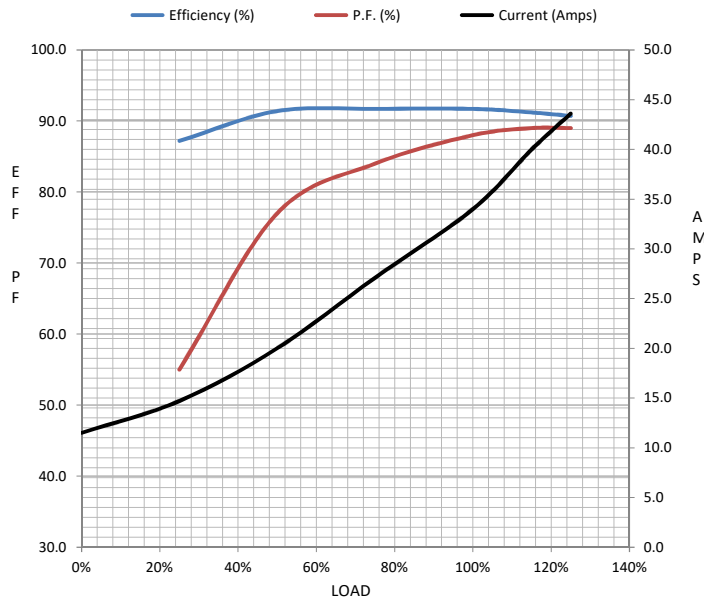
Data @ 460 V

Motor Load Data

Load	0%	25%	50%	75%	100%	115%	125%	LR	
Current (Amps)	11.5	14.7	20.0	27.1	34.0	40.0	43.6	207	
Torque (ft-lb)	0.00	11.0	22.0	33.2	44.4	51.2	55.7	65.0	
RPM	3600	3588	3576	3563	3550	3,541	3535	0	
Efficiency (%)		87.2	91.4	91.7	91.7	91.2	90.7		
P.F. (%)	8.0	55.0	77.0	84.0	88.0	89.0	89.0	63.4	

Motor Speed Data

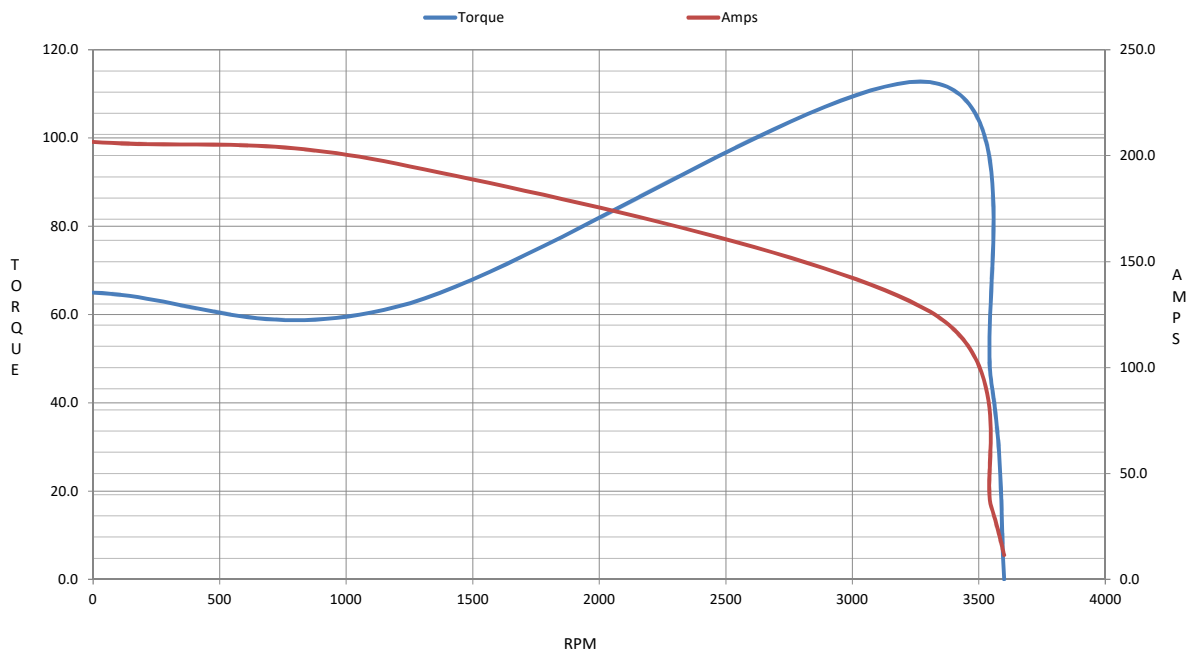
	LR	Pull-Up	BD	Rated	Idle
Speed (RPM)	0	1200	3308	3550	3600
Current (Amps)	207	196	126	34.0	11.5
Torque (ft-lb)	65.0	61.7	113	44.4	0.00



Information Block				
HP		30.0		
Sync. RPM		3600		
Frame		180		
Enclosure		TEFC		
Construction		TCA 180M02		
Voltage		230/460#200/400 V		
Frequency		60 Hz		
Design		N		
LR Code letter		F		
Service Factor		1.15		
Temp Rise @ FL		80 °C		
Duty		CONT		
Ambient		40 °C		
Elevation		3,300 feet		
Rotor/Shaft wk²		2.81 Lb-Ft²		
Ref Wdg		IE3L1802201 NONE		
Sound Pressure @ 1M		76 dBA		
VFD Rating		CONSTANT 2:1/VARIABLE 10:1		
Outline Dwg		SS312997		
Conn. Diag		8442000677		
Additional Specifications:				
0				
0				
EQUIV CKT (OHMS / PHASE)				
R1	R2	X1	X2	Xm
0.2360	0.1130	0.6620	0.7660	23.1460

IEC

Speed -Torque Curve



EC Declaration of Conformity

The undersigned representing
the manufacturer:

Regal Beloit America
100 East Randolph St.
Wausau, WI 54401

and the authorized representative
established within the Community:

Marathon Electric UK
6F Thistleton Road Ind. Estate
Market Overton
Oakham, Rutland LE15 7PP UK

are committed to providing customers with products that comply with applicable regulations and international protocols to which they are subject, including the requirements of the European Parliament Directive on the Harmonization of the laws relating to electrical equipment designed for use within certain voltage limits (2014/35/EU).

Regal Beloit America declares that the following product(s), to which this declaration relates, are in conformity with the relevant sections of the EC standards listed below.

This statement supersedes any statements previously issued pertaining to the product(s) listed below and is subject to change without notice.

Model No : TCA0221AE211GAA009

(Model No. may contain prefix and/or suffix characters)

Catalog No : R342B

Rework No : N/A

Directives :

Low Voltage Directive 2014/35/EU

Harmonized Standards Used :

EN 60034-1: 2010 (IEC 60034-1: 2010)

EN 60034-5: 2001/A1:2007 (IEC 60034-5: 2000/A1:2006)

Authorized Representative:



Michael A. Logsdon
Vice President, Technology

Authorized Representative in the Community:



Julian Clark
Marketing Engineer

Created on 09/01/2022

CE 22