

PRODUCT INFORMATION PACKET

Model No: SD111

Catalog No: SD111

Severe Duty Motor, 5 HP, 3 Ph, 60 Hz, 208-230/460 V, 1200 RPM, 215T Frame, TEFC



Regal and are trademarks of Regal Rexnord Corporation or one of its affiliated companies.
©2022 Regal Rexnord Corporation, All Rights Reserved. MC017097E

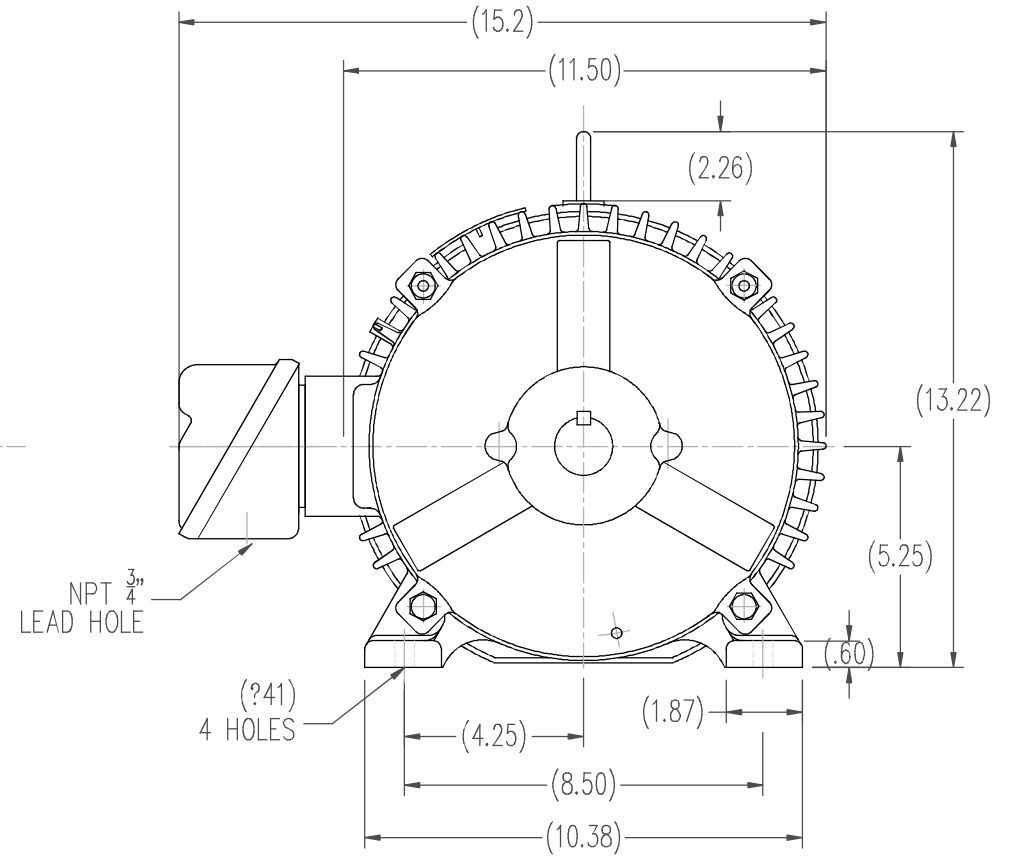
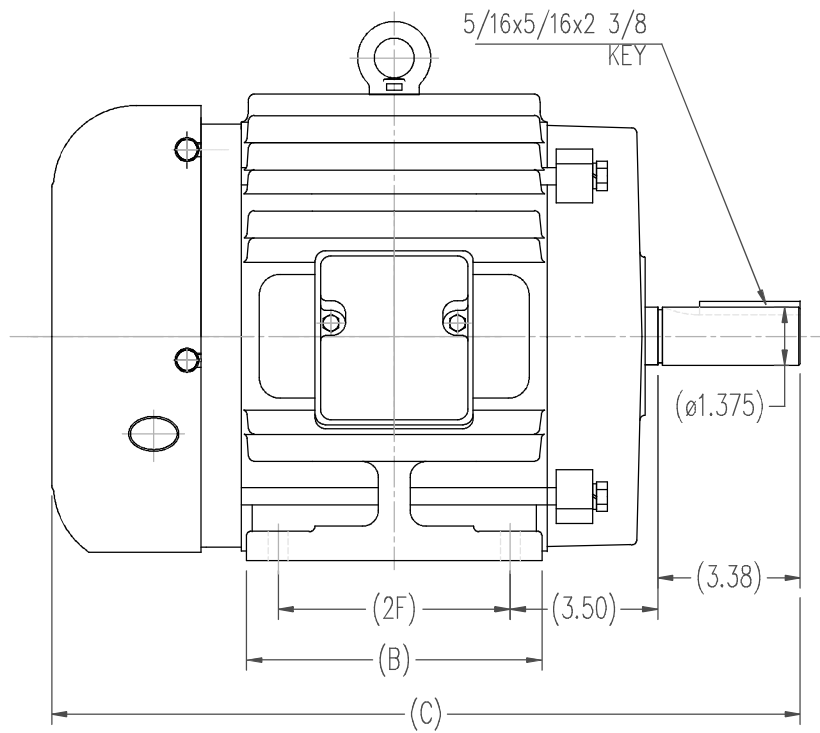
Nameplate Specifications

Output HP	5 Hp	Output KW	3.7 kW
Frequency	60 Hz	Voltage	208-230/460 V
Current	7 A	Speed	1178 rpm
Service Factor	1.15	Phase	3
Duty	Continuous	Insulation Class	F
Frame	215T	Enclosure	Totally Enclosed Fan Cooled
Thermal Protection	No Protection	Ambient Temperature	40 °C
UL	Recognized	CSA	Y
CE	Y	Number of Speeds	1

Technical Specifications

Electrical Type	POLYPHASE	Starting Method	Across The Line
Poles	6	Rotation	Reversible
Mounting	Rigid Base	Drive End Bearing	Ball
Opp Drive End Bearing	Ball	Frame Material	Cast Iron
Shaft Type	Keyed	Overall Length	19.48 in
Frame Length	8.75 in	Shaft Diameter	1.375 in
Shaft Extension	3.38 in		
Connection Drawing	A-EE7308	Outline Drawing	SS620604

This is an uncontrolled document once printed or downloaded and is subject to change without notice. Date Created:09/16/2022



				TOLERANCES UNLESS SPECIFIED		<div>REGAL</div> REGAL-BELOIT CORPORATION	DRAWN ZOU 7.17.2012		
				DEC.	INCHES		CHK		
				.X	±.1		APPD		
				.XX	±.03		SCALE		
				.XXX	±.005		REF		
				.XXXX	±.0005	MAT'L.	FMF		
				CHK	ANG	±1/2	FINISH		
NO.				REVISION		BY & DATE		RFP	
								CAD FILE	
								SS620604	
								SIZE	
								B	
								DRAWING NO.	
								SS620604	
								REV.	

THIS DRAWING IN DESIGN AND DETAIL IS OUR PROPERTY AND MUST NOT BE USED EXCEPT
IN CONNECTION WITH OUR WORK ALL RIGHTS OF DESIGN AND INVENTION ARE RESERVED
THIS IS AN ELECTRONICALLY GENERATED DOCUMENT - DO NOT SCALE THIS PRINT



NO.	REVISION	BY & DATE	CHK	ANG	TOLERANCES UNLESS SPECIFIED		DRAWN RM	ML	OF	REV.
					DEC.	INCHES				
5	CHG TO REGAL LOGO	SL 09/10/2015	AB				 Regal Beloit America, Inc.			
4	REVISED IEC NOTATIONS	MSG 11/15/2011	CMN	.X	±.1					
3	ADDED IEC NOTATIONS... (U1), (V1) ETC. MU95194	MSG 5/10/2010	MJS	.XX	±.02					
2	ADDED THE OPTIONAL CORD CONNECTION MU46318	RDH 04/24/2003	DRS	.XXX	±.005					
1	REDRAWN	RM 11/20/1990		.XXXX	±.0005					
							TITLE			
							3Ø - DUAL VOLTAGE MOTOR			
							MAT'L.			
							FINISH			
							CAD FILE ee7308			
							SIZE			
							A			
							DRAWING NO.			
							EE7308			
							PAGE			
							5			

THIS DRAWING IN DESIGN AND DETAIL IS OUR PROPERTY AND MUST NOT BE USED EXCEPT
IN CONNECTION WITH OUR WORK ALL RIGHTS OF DESIGN AND INVENTION ARE RESERVED
THIS IS AN ELECTRONICALLY GENERATED DOCUMENT - DO NOT SCALE THIS PRINT