

PRODUCT INFORMATION PACKET



Model No: SD105
Catalog No: SD105
2 HP Severe Duty Motor, 3 phase, 1200 RPM, 208-230/460 V, 184T Frame, TEFC
Severe Duty Motors



Regal and Century are trademarks of Regal Rexnord Corporation or one of its affiliated companies.
©2021 Regal Rexnord Corporation, All Rights Reserved. MC017097E





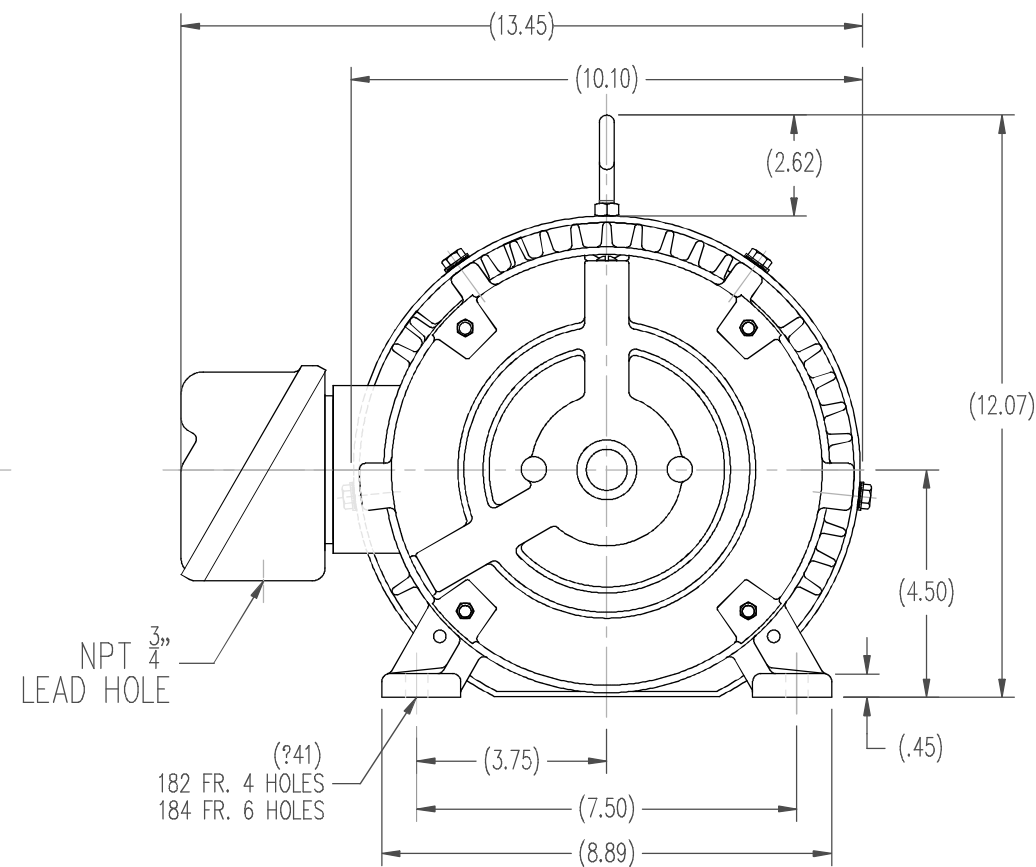
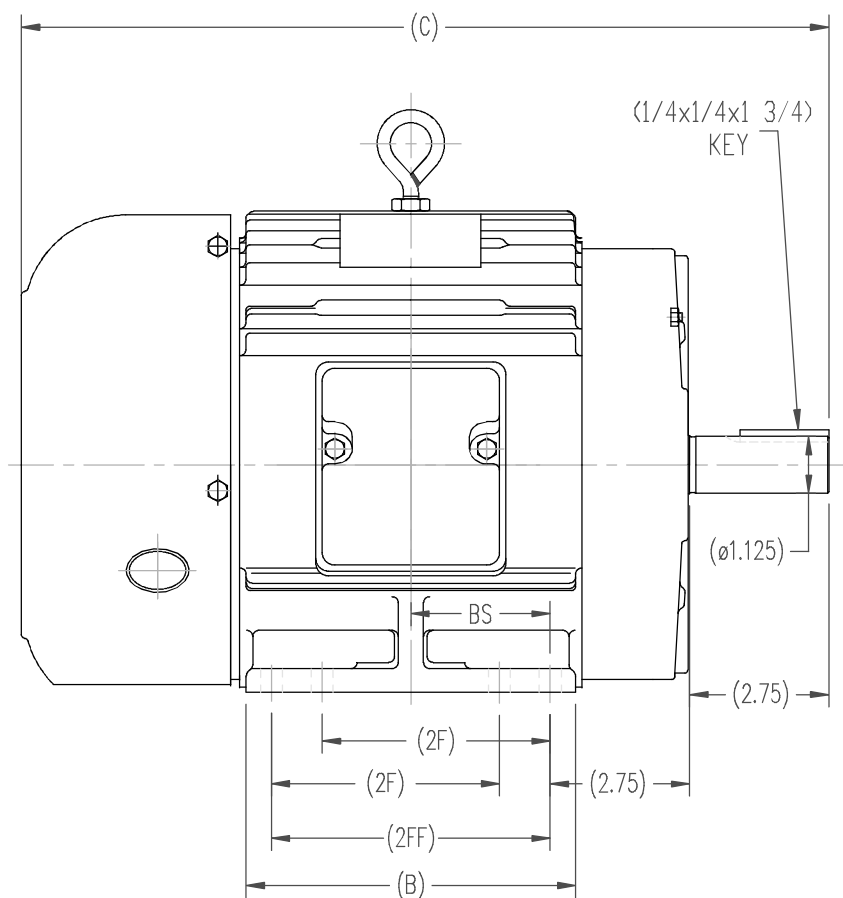
Nameplate Specifications

Output HP	2 Hp	Output KW	1.5 kW
Frequency	60 Hz	Voltage	208-230/460 V
Current	6.6-6/3 A	Speed	1182 rpm
Service Factor	1.15	Phase	3
Duty	Continuous	Insulation Class	F
Frame	184T	Enclosure	Totally Enclosed Fan Cooled
Thermal Protection	None	Ambient Temperature	40 °C
UL	Recognized	CSA	Y
CE	Y	Number of Speeds	1

Technical Specifications

Electrical Type	POLYPHASE	Starting Method	Across The Line
Poles	6	Rotation	Reversible
Mounting	Rigid Base	Drive End Bearing	Ball
Opp Drive End Bearing	Ball	Frame Material	Cast Iron
Shaft Type	Keyed	Overall Length	16.14 in
Frame Length	6.75 in	Shaft Diameter	1.125 in
Shaft Extension	2.75 in		
Outline Drawing	SS620603	Connection Drawing	A-EE7308

This is an uncontrolled document once printed or downloaded and is subject to change without notice. Date Created:10/12/2021



182T	15.15	5.50	-	4.50	2.25
184T	16.14	6.55	5.50	4.50	2.75
FRAME	C	B	2FF	2F	BS

			TOLERANCES UNLESS SPECIFIED		DRAWN ZOU 7.17.2012	
			DEC.	INCHES	CHK	
			.X	±.1	APPD	
			.XX	±.03	SCALE	
			.XXX	±.005	REF	
			.XXXX	±.0005	FMF	
			ANG	±1/2	PREV	
NO.	REVISION	BY & DATE	CHK	FINISH		
THIS DRAWING IN DESIGN AND DETAIL IS OUR PROPERTY AND MUST NOT BE USED EXCEPT IN CONNECTION WITH OUR WORK ALL RIGHTS OF DESIGN AND INVENTION ARE RESERVED THIS IS AN ELECTRONICALLY GENERATED DOCUMENT - DO NOT SCALE THIS PRINT				RFP	CAD FILE	SS620603
				DIST	SIZE	B
					DRAWING NO.	SS620603
					REV.	



				TOLERANCES UNLESS SPECIFIED		 Regal Beloit America, Inc.	DRAWN RM 11/20/1990			
5	CHG TO REGAL LOGO	SL 09/10/2015	AB	DEC.	INCHES		CHK ML 11/21/1990			
4	REVISED IEC NOTATIONS	MSG 11/15/2011	CMN	.X	±.1		APPD SAS 04/24/2003			
3	ADDED IEC NOTATIONS... (U1), (V1) ETC. MU95194	MSG 5/10/2010	MJS	.XX	±.02		SCALE 1=1			
2	ADDED THE OPTIONAL CORD CONNECTION MU46318	RDH 04/24/2003	DRS	.XXX	±.005		REF			
1	REDRAWN	RM 11/20/1990		.XXXX	±.0005	MAT'L	FMF			
NO.	REVISION	BY & DATE	CHK	ANG	±7"30"	FINISH	PREV			
THIS DRAWING IN DESIGN AND DETAIL IS OUR PROPERTY AND MUST NOT BE USED EXCEPT IN CONNECTION WITH OUR WORK ALL RIGHTS OF DESIGN AND INVENTION ARE RESERVED THIS IS AN ELECTRONICALLY GENERATED DOCUMENT – DO NOT SCALE THIS PRINT			RFP		CAD FILE ee7308		SIZE A	DRAWING NO. EE7308	PAGE OF	REV. 5
			DIST WP							