

# PRODUCT INFORMATION PACKET

**marathon®**  
Motors

Model No: SCA0552A1113GAA001

Catalog No: SCA0552A1113GAA001

TerraMAX® Cast Iron Motor, 75 HP, 3 Ph, 50 Hz, 400 V, 1500 RPM, 250M Frame, TEFC



Regal and Marathon are trademarks of Regal Rexnord Corporation or one of its affiliated companies.  
©2022 Regal Rexnord Corporation, All Rights Reserved. MC017097E

**RegalRexnord**

### Nameplate Specifications

|                        |               |                            |                             |
|------------------------|---------------|----------------------------|-----------------------------|
| Output HP              | 75 Hp         | Output KW                  | 55.0 kW                     |
| Frequency              | 50 Hz         | Voltage                    | 400 V                       |
| Current                | 98.7 A        | Speed                      | 1482 rpm                    |
| Service Factor         | 1             | Phase                      | 3                           |
| Efficiency             | 93.5 %        | Power Factor               | 0.86                        |
| Duty                   | S1            | Insulation Class           | F                           |
| Frame                  | 250M          | Enclosure                  | Totally Enclosed Fan Cooled |
| Thermal Protection     | No Protection | Ambient Temperature        | 40 °C                       |
| Drive End Bearing Size | 6314          | Opp Drive End Bearing Size | 6314                        |
| UL                     | No            | CSA                        | No                          |
| CE                     | Yes           | IP Code                    | 55                          |
| Number of Speeds       | 1             | Efficiency Class           | IE2                         |

### Technical Specifications

|                       |               |                       |                |
|-----------------------|---------------|-----------------------|----------------|
| Electrical Type       | Squirrel Cage | Starting Method       | Direct On Line |
| Poles                 | 4             | Rotation              | Bi-Directional |
| Mounting              | B3            | Motor Orientation     | Horizontal     |
| Drive End Bearing     | C3            | Opp Drive End Bearing | C3             |
| Frame Material        | Cast Iron     | Shaft Type            | Keyed          |
| Overall Length        | 941 mm        | Frame Length          | 460 mm         |
| Shaft Diameter        | 65 mm         | Shaft Extension       | 140 mm         |
| Assembly/Box Mounting | R Side        |                       |                |
| Connection Drawing    | 8442000085    | Outline Drawing       | 0225000750     |

This is an uncontrolled document once printed or downloaded and is subject to change without notice. Date Created:12/01/2022

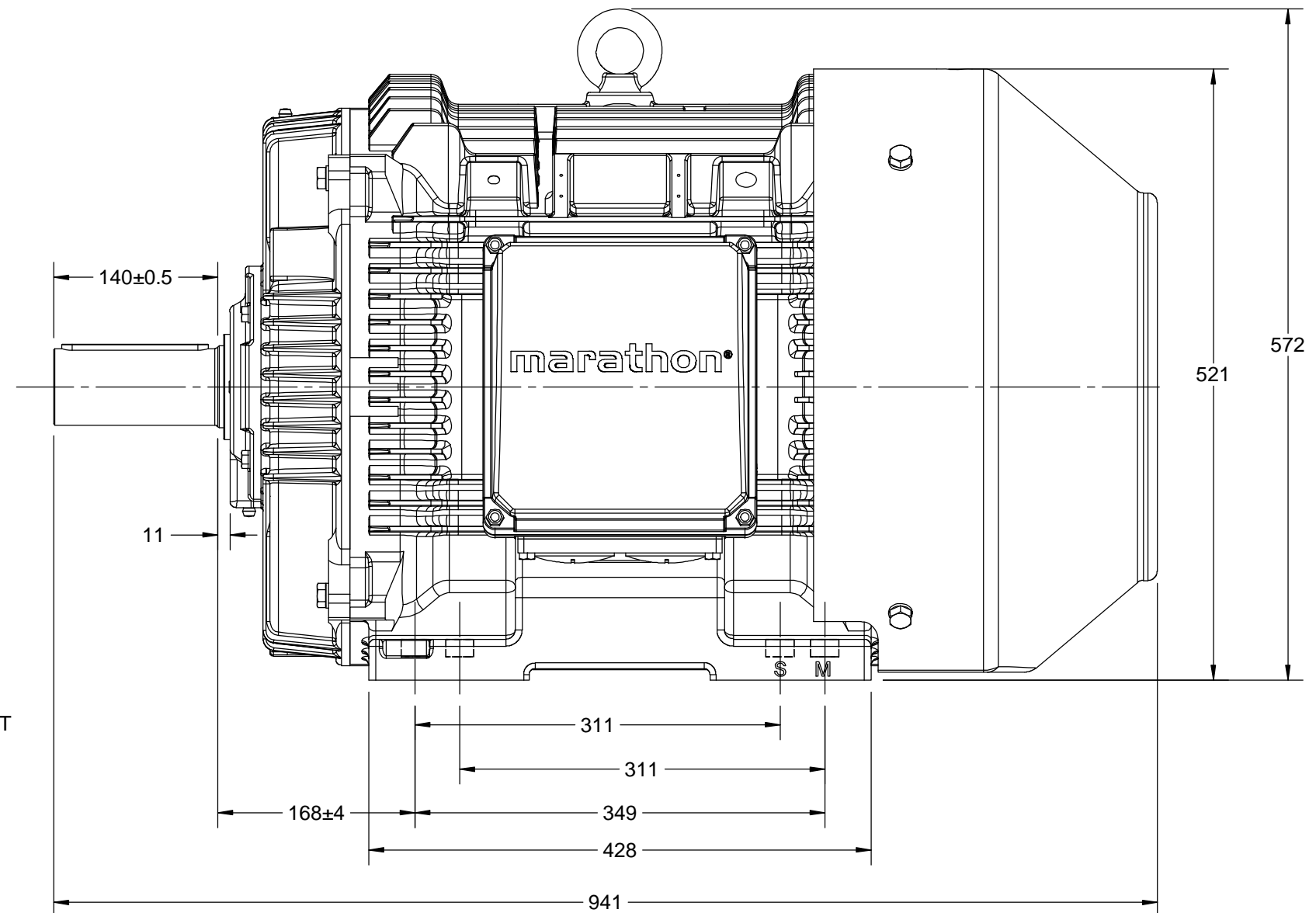
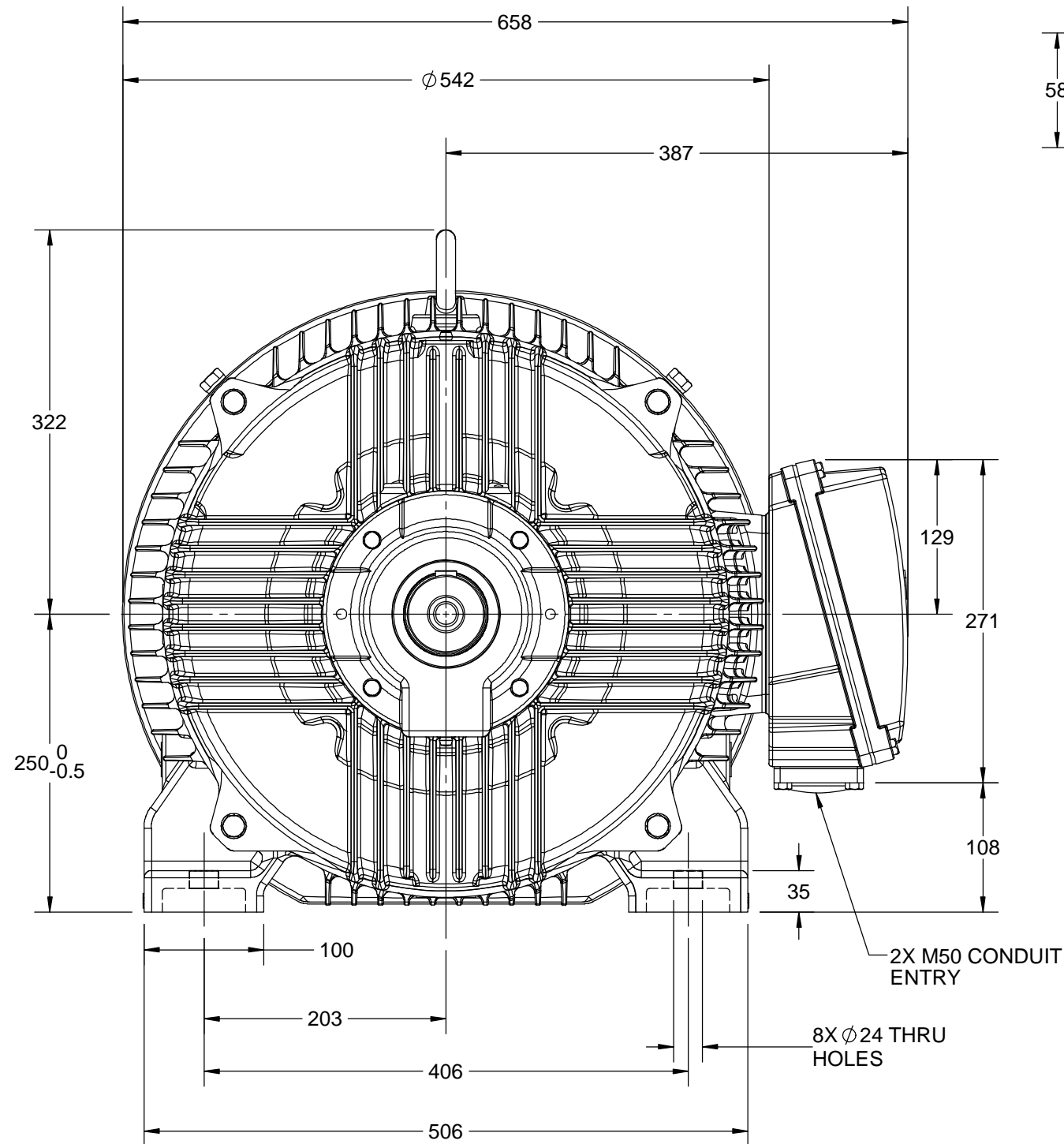
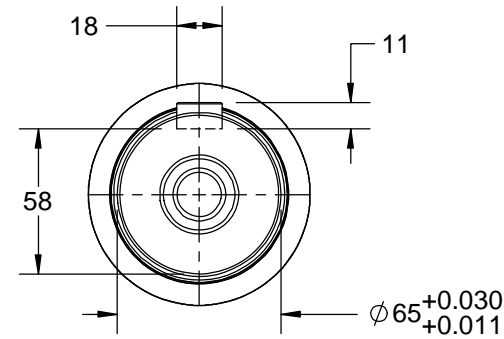
4

3

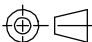
Uncontrolled Copy

2

1



|  |                          |                    |
|--|--------------------------|--------------------|
| DRAWING REVISION<br>A  | REVISION BY<br>A. KEETHA | DATE<br>13/11/2018 |
| ECO<br>ECO-0153779   | APPROVED BY<br>JAY       | DATE<br>13/11/2018 |
| ECO DESCRIPTION<br><b>NEW DRAWING RELEASE</b><br><small>COPYRIGHT REGAL BELOIT AMERICA, INC. ALL RIGHTS RESERVED. PROPRIETARY AND CONFIDENTIAL INFORMATION - THIS DOCUMENT IS THE PROPERTY OF REGAL BELOIT AMERICA, INC. ("OWNER") AND CONTAINS OWNER'S PROPRIETARY INFORMATION. ANY PERSON, CORPORATION OR OTHER FIRM RECEIVING IT IS DEEMED, BY RECEIVING IT, TO AGREE THAT IT, AND/OR ANY PART OF IT, SHALL NOT BE DISCLOSED TO ANY PERSON, CORPORATION OR OTHER ENTITY, DUPLICATED, AND/OR USED, EXCEPT AS EXPRESSLY APPROVED IN WRITING IN ADVANCE BY OWNER. THIS DOCUMENT SHALL BE RETURNED TO OWNER UPON REQUEST. IT MAY BE SUBJECT TO CERTAIN RESTRICTIONS UNDER APPLICABLE EXPORT CONTROL LAWS AND REGULATIONS.</small> |                          |                    |

|  |           |  |                 |
|--|-----------|--|-----------------|
| DRAWN BY<br>A. KEETHA  |           | <div>marathon™<br/>Motors</div>  |                 |
| DATE<br>13/11/2018   |           |  |                 |
| APPROVED BY<br>JAY   |           | DESCRIPTION<br><br>OUTLINE<br><br>250M FRAME B3 MTG. MOTOR TYPE:SCA RHS TB |                 |
| DATE<br>13/11/2018   |           |  |                 |
| REFERENCE  |           | MATERIAL   | PROCESS/FINISH  |
| THIRD ANGLE<br>PROJECTION<br> | SIZE<br>B | DRAWING NUMBER<br>0225000750   |                 |
|  |           |  | SHEET<br>1 OF 1 |

4

3

2

1

COPYRIGHT REGAL BELOIT AMERICA, INC. ALL RIGHTS RESERVED. UNCONTROLLED COPY  
 PROPRIETARY AND CONFIDENTIAL INFORMATION - THIS DOCUMENT IS THE PROPERTY OF  
 REGAL BELOIT AMERICA, INC. ("OWNER") AND CONTAINS OWNER'S PROPRIETARY  
 INFORMATION. ANY PERSON, CORPORATION OR OTHER FIRM RECEIVING IT IS DEEMED,  
 BY RECEIVING IT, TO AGREE THAT IT, AND/OR ANY PART OF IT, SHALL NOT BE DISCLOSED  
 TO ANY PERSON, CORPORATION OR OTHER ENTITY, DUPLICATED, AND/OR USED, EXCEPT  
 AS EXPRESSLY APPROVED IN WRITING IN ADVANCE BY OWNER. THIS DOCUMENT SHALL  
 BE RETURNED TO OWNER UPON REQUEST. IT MAY BE SUBJECT TO CERTAIN  
 RESTRICTIONS UNDER APPLICABLE EXPORT CONTROL LAWS AND REGULATIONS.

|  |                    |                    |
|--|--------------------|--------------------|
| DRAWING REVISION<br>A                  | REVISION BY<br>SN  | DATE<br>13/01/2017 |
| ECO<br>ECO-0116390                     | APPROVED BY<br>SBD | DATE<br>13/01/2017 |
| ECO DESCRIPTION<br>NEW DRAWING RELEASE |                    |                    |

| GEOMETRIC TOLERANCE |         |      |
|---------------------|---------|------|
| LINEAR DIM          | >0~6    | ±0.1 |
|                     | >6~30   | ±0.2 |
|                     | >30~120 | ±0.3 |



NOTES:

1. PRESSURE-SENSITIVE ADHESIVE COATED PAPER ON THE BACK OF SELF-ADHESIVE.
2. AT THE END OF YELLOW, WORDS, SYMBOLS, LETTERS ARE BLACK, BORDER IS BLACK.
3. THE TOLERANCE OF THE LINEAR SIZE OF THE TOLERANCE WITHOUT THE TOLERANCE BY THE TABLE.

8WD.442.2017

|  |                        |  |  |  |                              |  |                 |
|--|------------------------|--|--|--|------------------------------|--|-----------------|
|  | DRAWN BY<br>SN         |  | Regal Beloit America, Inc.                   |  |                              |  |                 |
|  | DATE<br>16/12/2016     |  |  |  |                              |  |                 |
|  | APPROVED BY<br>SBD     |  | DESCRIPTION<br><b>CONN DIAGRAM-NAMEPLATE</b> |  |                              |  |                 |
|  | DATE<br>16/12/2016     |  |  |  |                              |  |                 |
|  | REFERENCE              |  | MATERIAL                                     |  | PROCESS/FINISH               |  |                 |
|  | THIRD ANGLE PROJECTION |  | SIZE<br>A                                    |  | DRAWING NUMBER<br>8442000085 |  | SHEET<br>1 OF 1 |