

# PRODUCT INFORMATION PACKET

Model No: R354M2

Catalog No: R354M2

Elevator Duty Motor, 15 HP, 3 Ph, 60 Hz, 200 V, 1800 RPM, 215T Frame, ODP



Regal and are trademarks of Regal Rexnord Corporation or one of its affiliated companies.  
©2022 Regal Rexnord Corporation, All Rights Reserved. MC017097E

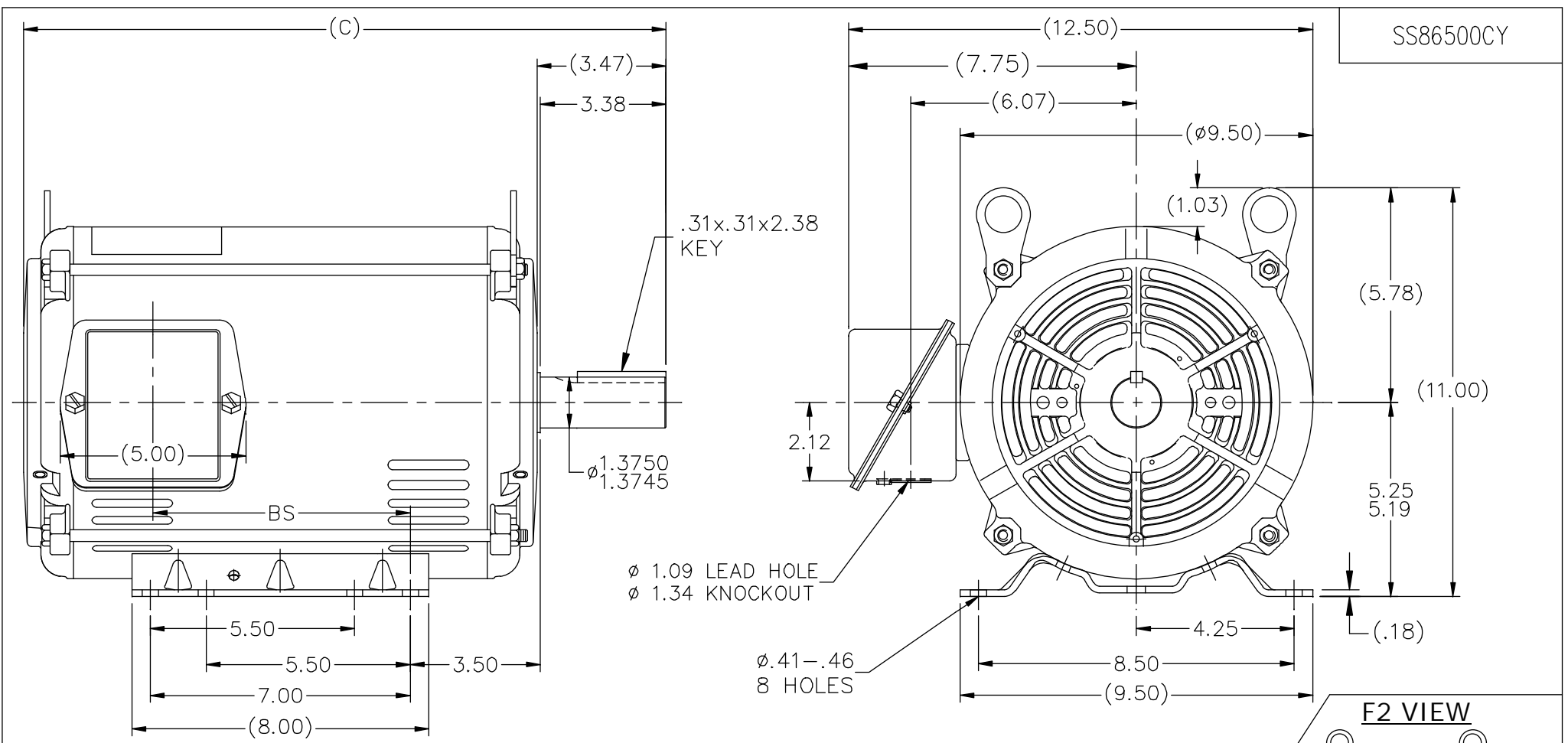
### Nameplate Specifications

Output HP	<b>15 Hp</b>	Output KW	<b>11.2 kW</b>
Frequency	<b>60 Hz</b>	Voltage	<b>200 V</b>
Current	<b>44 A</b>	Speed	<b>1760 rpm</b>
Service Factor	<b>1</b>	Phase	<b>3</b>
Duty	<b>Continuous</b>	Insulation Class	<b>F</b>
Frame	<b>215T</b>	Enclosure	<b>Open Drip Proof</b>
Thermal Protection	<b>No Protection</b>	Ambient Temperature	<b>40 °C</b>
UL	<b>Recognized</b>	CSA	<b>Y</b>
CE	<b>Y</b>	Number of Speeds	<b>1</b>

### Technical Specifications

Electrical Type	<b>Polyphase</b>	Starting Method	<b>Across The Line</b>
Poles	<b>4</b>	Rotation	<b>Reversible</b>
Mounting	<b>Rigid Base</b>	Drive End Bearing	<b>Ball</b>
Opp Drive End Bearing	<b>Ball</b>	Frame Material	<b>Rolled Steel</b>
Shaft Type	<b>Keyed</b>	Overall Length	<b>21.06 in</b>
Frame Length	<b>15.45 in</b>	Shaft Diameter	<b>1.375 in</b>
Shaft Extension	<b>3.47 in</b>		
Connection Drawing	<b>A-EE7340-CY</b>	Outline Drawing	<b>SS86500CY</b>

This is an uncontrolled document once printed or downloaded and is subject to change without notice. Date Created:09/07/2022



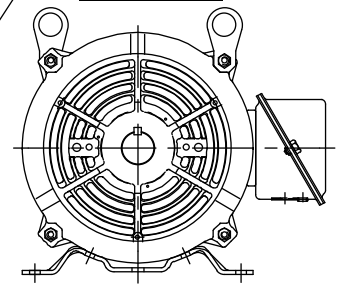
SS86500CY

.31x.31x2.38  
KEY

ø 1.09 LEAD HOLE  
ø 1.34 KNOCKOUT

ø .41-.46  
8 HOLES


F2 VIEW



NOTES:

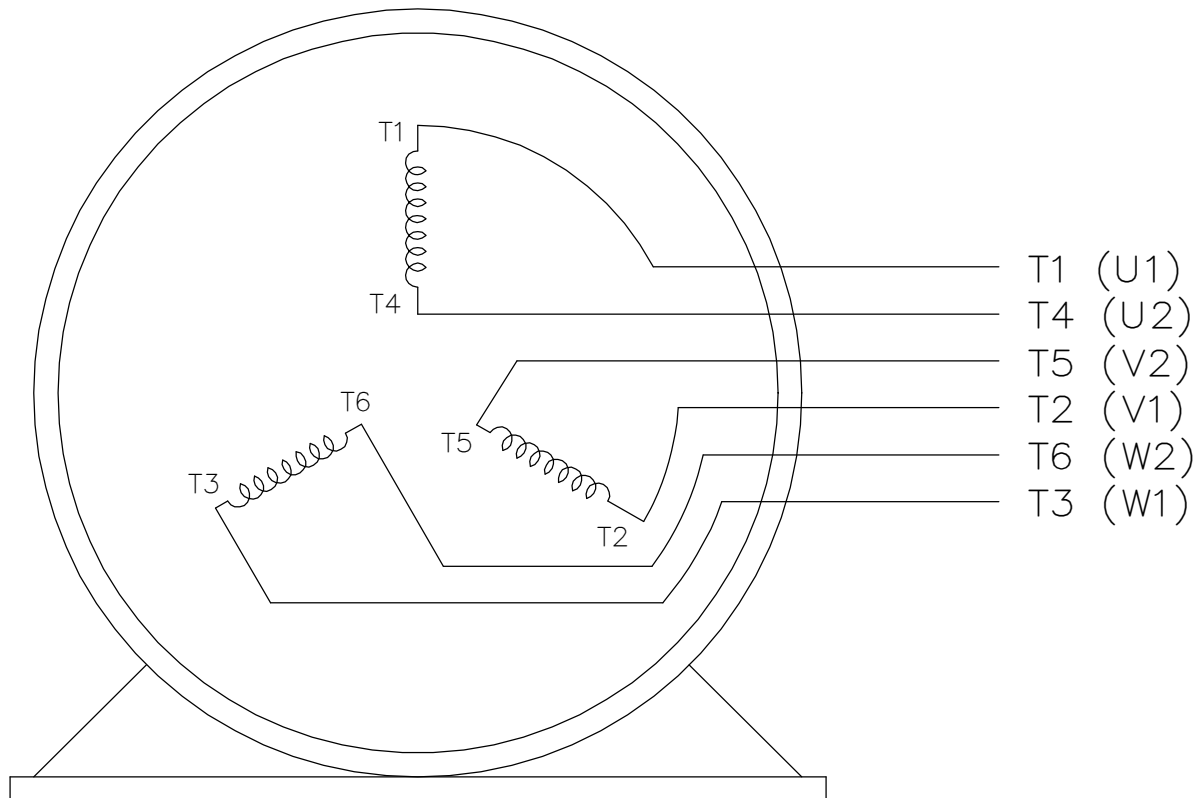
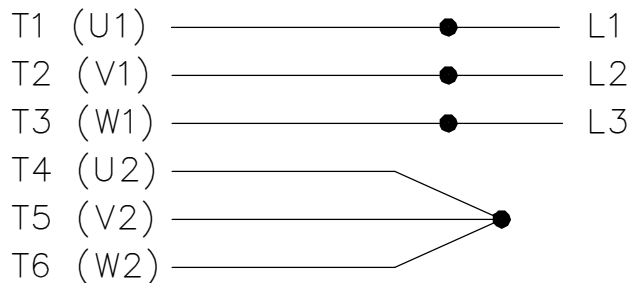
1. NAMEPLATE TO BE READ FROM C'BOX SIDE OF MOTOR.
2. BOX CAN BE MOUNTED IN 90° STEPS.
3. BOX CAN BE MOUNTED ON OPPOSITE SIDE BY REMOVING BRACKETS AND TURNING FRAME 180°. (EXCEPT AS NOTED.)

DASH	FR.	C	BS	MOUNTING
965	213T	15.80	5.43	F1 / F2
1115	213/15T	17.30	6.93	F1 / F2
1240	213/15T	18.55	8.18	F1 ONLY
1545	213/15T	21.06	11.23	F1 ONLY

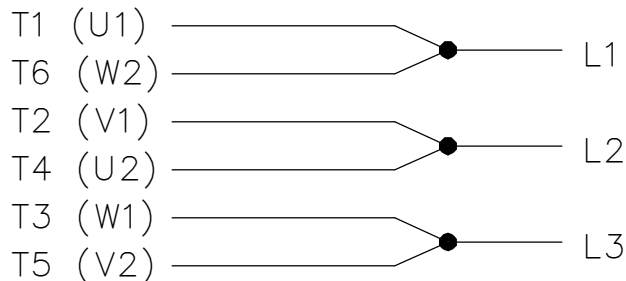
		TOLERANCES UNLESS SPECIFIED				DRAWN GR 03/08/12		
		DEC.	INCHES			CHK ST 03/08/12		
		.X	±.1			APPD		
03	F1/F2 NOTE ADDED FOR 1115 FRAME DASH VALUE	GR 12/13/12	SR .XX	±.03	TITLE OUTLINE	SCALE 1=4		
02	1545 DASH VALUE'S ADDED IN TABLE	GR 07/27/12	SR .XXX	±.005	210 FR. - BB - TS - DR. PR.	REF SS86500		
01	965 DASH VALUE'S ADDED IN TABLE	UD 07/12/12	SR .XXXX	±.0005	MAT'L.	FMF		
NO.	REVISION	BY & DATE	CHK ANG	±7'30"	FINISH	PREV		
THIS DRAWING IN DESIGN AND DETAIL IS OUR PROPERTY AND MUST NOT BE USED EXCEPT IN CONNECTION WITH OUR WORK ALL RIGHTS OF DESIGN AND INVENTION ARE RESERVED THIS IS AN ELECTRONICALLY GENERATED DOCUMENT - DO NOT SCALE THIS PRINT				RFP	CAD FILE SS86500CY	SIZE A	DRAWING NO. PAGE 1 OF 1	REV. 03
				DIST			SS86500CY	

THREE PHASE  
WYE START DELTA RUN

START


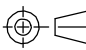


RUN



VIEW OF TERMINAL END

NOTE:  
IEC LEAD MARKINGS ARE NOTED  
IN PARANTHESES

DRAWING REVISION F		REVISION BY RTT	REV DATE/© DATE 05-29-2019	TOLERANCES (EXCEPT AS NOTED):		DRAWN BY LZ		 Regal Beloit America, Inc.	
ECO ECO-0167538		APPROVED BY JWA	DATE 05-29-2019	DEC. .X	INCH ±0.1	mm [±3]	ANGLE ±7° 30"		
ECO DESCRIPTION UPDATED TITLE BLOCK				REMOVE BURRS & BREAK SHARP EDGES: .003/.015 [.08/.38] X 45° CORNER FILLETS: R.02 [.5] MACHINED SURFACES: 200/ 5.1 INCH √ mm √		APPROVED BY GK		DESCRIPTION CONNECTION DIAGRAM 3<MOD-DIAM> - WYE START DELTA RUN	
COPYRIGHT (PER REVISION DATE) REGAL BELOIT AMERICA, INC. ALL RIGHTS RESERVED. PROPRIETARY AND CONFIDENTIAL INFORMATION - THIS DOCUMENT IS THE PROPERTY OF REGAL BELOIT AMERICA, INC. ("OWNER") AND CONTAINS OWNER'S PROPRIETARY INFORMATION. ANY PERSON, CORPORATION OR OTHER FIRM RECEIVING IT IS DEEMED, BY RECEIVING IT, TO AGREE THAT IT, AND/OR ANY PART OF IT, SHALL NOT BE DISCLOSED TO ANY PERSON, CORPORATION OR OTHER ENTITY, DUPLICATED, AND/OR USED, EXCEPT AS EXPRESSLY APPROVED IN WRITING IN ADVANCE BY OWNER. THIS DOCUMENT SHALL BE RETURNED TO OWNER UPON REQUEST. IT MAY BE SUBJECT TO CERTAIN RESTRICTIONS UNDER APPLICABLE EXPORT CONTROL LAWS AND REGULATIONS.				mm DIMENSIONS IN [BRACKETS] ARE FOR REFERENCE ONLY		DATE 01-18-1994		MATERIAL	
				THIRD ANGLE PROJECTION 		REFERENCE		PROCESS/FINISH	
								SHEET 1 OF 1	