

# PRODUCT INFORMATION PACKET

Model No: R327M2

Catalog No: R327M2

Crop Dryer Motor, 10.0-14.0 HP, 3 Ph, 60 Hz, 230/460 V, 3600 RPM, F215TZ Frame, TEAO



Regal and are trademarks of Regal Rexnord Corporation or one of its affiliated companies.  
©2022 Regal Rexnord Corporation, All Rights Reserved. MC017097E

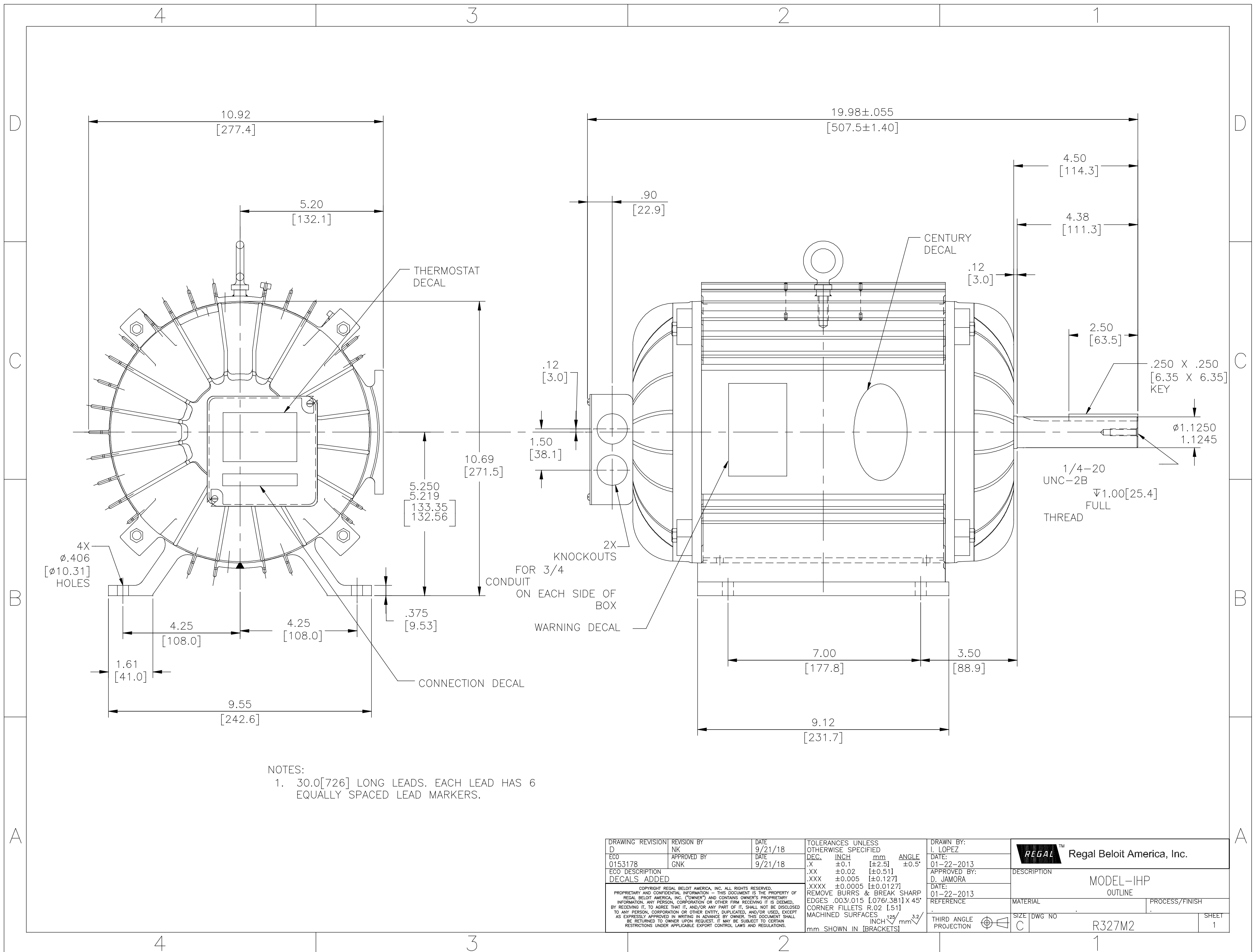
**Nameplate Specifications**

Output HP	10.0-14.0 Hp	Output KW	7.5 kW
Frequency	60 Hz	Voltage	230/460 V
Current	36/18 A	Speed	3460 rpm
Service Factor	1	Phase	3
Duty	Continuous	Insulation Class	F
Frame	F215TZ	Enclosure	Totally Enclosed Air Over
Thermal Protection	No Protection	Ambient Temperature	50 °C
UL	Recognized	CSA	Y
CE	N	Number of Speeds	1

**Technical Specifications**

Electrical Type	Polyphase, Induction Type, Single Or Dual Voltage	Starting Method	Across The Line
Poles	2	Rotation	Reversible
Mounting	Rigid Base	Drive End Bearing	Ball
Opp Drive End Bearing	Ball	Frame Material	Rolled Steel
Shaft Type	Keyed	Overall Length	19.98 in
Frame Length	9.00 in	Shaft Diameter	1.125 in
Shaft Extension	4.50 in		
Connection Drawing	80022802	Outline Drawing	R327M2-S01

This is an uncontrolled document once printed or downloaded and is subject to change without notice. Date Created:09/08/2022



NOTES:  
 1. 30.0[726] LONG LEADS. EACH LEAD HAS 6 EQUALLY SPACED LEAD MARKERS.

DRAWING REVISION D	REVISION BY NK	DATE 9/21/18	TOLERANCES UNLESS OTHERWISE SPECIFIED		DRAWN BY: I. LOPEZ	Regal Beloit America, Inc.
ECO 0153178	APPROVED BY GNK	DATE 9/21/18	DEC.	INCH mm ANGLE	DATE: 01-22-2013	
ECO DESCRIPTION DECALS ADDED			.XX	±0.1 [±2.5] ±0.5°	APPROVED BY: D. JAMORA	DESCRIPTION MODEL-IHP OUTLINE
<small>COPYRIGHT REGAL BELOIT AMERICA, INC. ALL RIGHTS RESERVED. PROPRIETARY AND CONFIDENTIAL INFORMATION - THIS DOCUMENT IS THE PROPERTY OF REGAL BELOIT AMERICA, INC. (OWNER) AND CONTAINS OWNER'S PROPRIETARY INFORMATION. ANY PERSON, CORPORATION OR OTHER FIRM RECEIVING IT IS DEEMED, BY RECEIVING IT, TO AGREE THAT IT, AND/OR ANY PART OF IT, SHALL NOT BE DISCLOSED TO ANY PERSON, CORPORATION OR OTHER ENTITY, DUPLICATED, AND/OR USED, EXCEPT AS EXPRESSLY APPROVED IN WRITING IN ADVANCE BY OWNER. THIS DOCUMENT SHALL BE RETURNED TO OWNER UPON REQUEST. IT MAY BE SUBJECT TO CERTAIN RESTRICTIONS UNDER APPLICABLE EXPORT CONTROL LAWS AND REGULATIONS.</small>			.XXX	±0.005 [±0.127]	DATE: 01-22-2013	MATERIAL
			.XXXX	±0.0005 [±0.0127]	REFERENCE	PROCESS/FINISH
			REMOVE BURRS & BREAK SHARP EDGES .003/.015 [0.076/.381] X 45° CORNER FILLETS R.02 [5.1] MACHINED SURFACES 125/INCH 3.2/mm SHOWN IN [BRACKETS]		THIRD ANGLE PROJECTION	SIZE DWG NO C R327M2
					SHEET 1	