

PRODUCT INFORMATION PACKET



Model No: R257M2
Catalog No: R257M2
7 1/2 HP Pool Pump Motor, 3 phase, 3600 RPM, 200 V, 184TDZ Frame, ODP
Pool Pump Motors



Regal and Century are trademarks of Regal Rexnord Corporation or one of its affiliated companies.
©2021 Regal Rexnord Corporation, All Rights Reserved. MC017097E





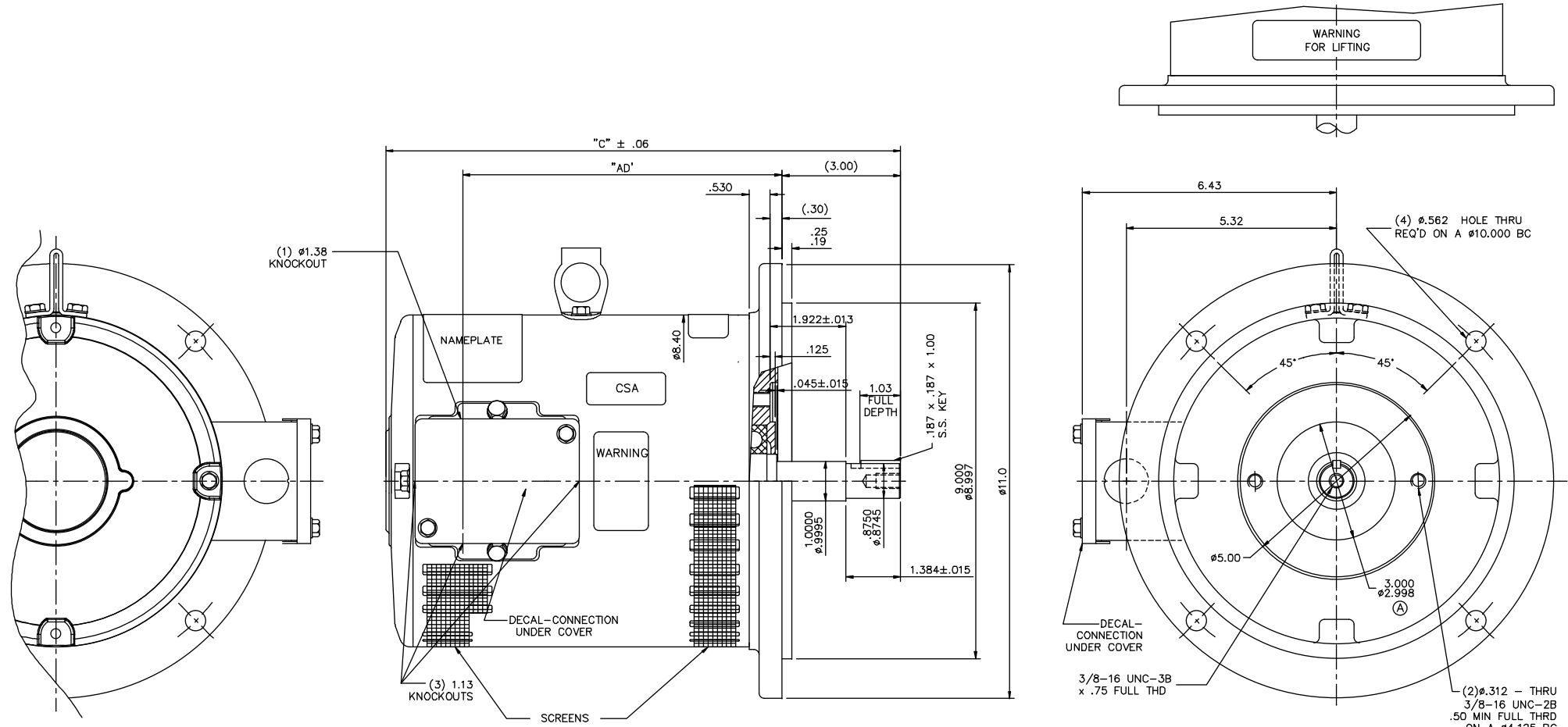
Nameplate Specifications

Output HP	7 1/2 Hp	Output KW	5.6 kW
Frequency	60 Hz	Voltage	200 V
Current	20.3 A	Speed	3470 rpm
Service Factor	1.15	Phase	3
Duty	Continuous	Insulation Class	F
Frame	184TDZ	Enclosure	Drip Proof
Thermal Protection	No	Ambient Temperature	40 °C
UL	Recognized	CSA	Y
CE	Y	Number of Speeds	1

Technical Specifications

Electrical Type	Polyphase	Starting Method	Across The Line
Poles	2	Rotation	Reversible
Mounting	Special/Non-Standard	Motor Orientation	Horizontal
Drive End Bearing	Ball	Opp Drive End Bearing	Ball
Frame Material	Rolled Steel	Shaft Type	7/8 Keyed
Overall Length	15.32 in	Frame Length	10.00 in
Shaft Diameter	1.000 in	Shaft Extension	3 in
Outline Drawing	035898CY-1000	Connection Drawing	005102.01CY

This is an uncontrolled document once printed or downloaded and is subject to change without notice. Date Created:10/07/2021



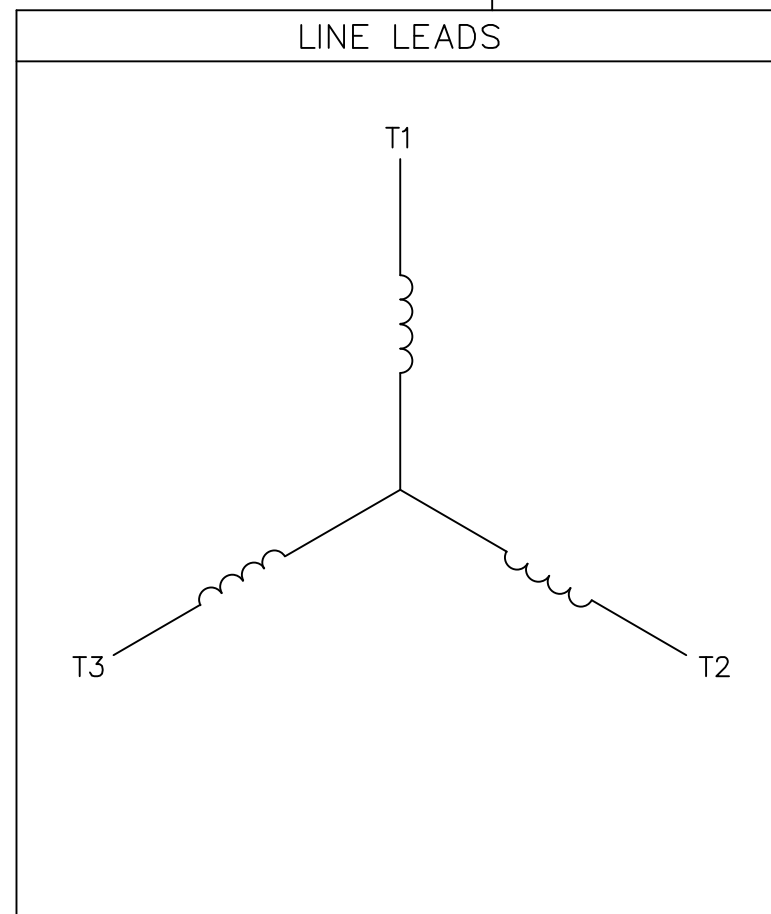
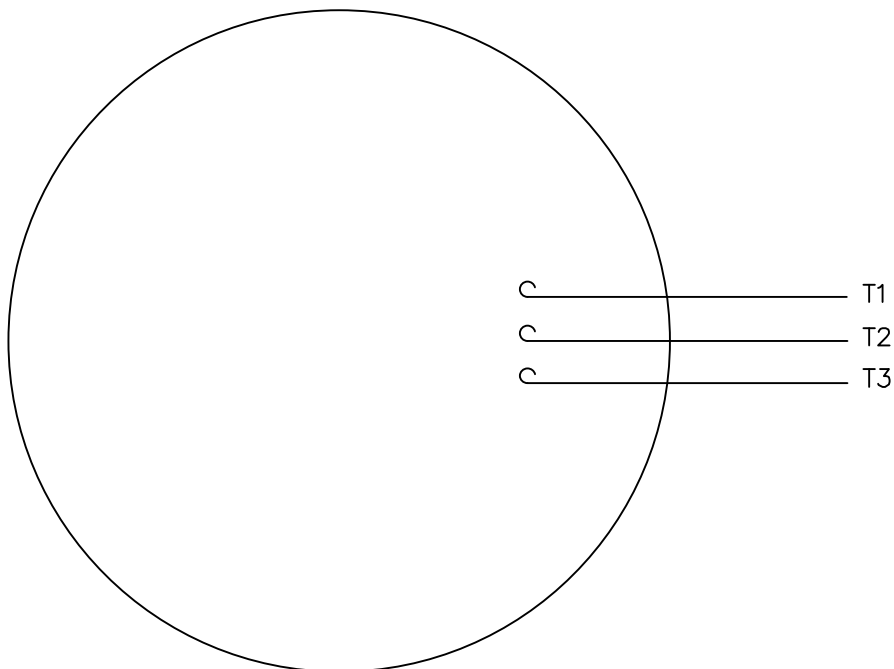
GASKETS THROUGHOUT
 MAXIMUM FACE RUNOUT TO BE .004 T.I.R.
 MAXIMUM PILOT ECCENTRICITY TO BE .004 T.I.R.
 PERMISSIBLE SHAFT RUNOUT TO BE .002 T.I.R.

DASH NO.	"C"	"AD"
850	13.82	8.00
900	14.32	8.50
950	14.82	9.00
1000	15.32	9.50
1050	15.82	10.00
1100	16.32	10.50
1150	16.82	11.00
1200	17.32	11.50

- CTQ'S
- (P) PROCESS
 - (E) ENGINEERING
 - (A) APPLICATION
 - (R) REGULATORY


		TOLERANCES UNLESS SPECIFIED				Century		DRAWN GR 07/31/12				
		DEC.	INCHES					CHK SR 07/31/12				
		.X	±.1					APPD				
3	CSA DECAL ADDED	UD	02/11/13	SR	.XX	±.03	TITLE	OUTLINE - 180TZ FRAME				
2	SCREEN REPRESENTATION ADDED IN DRG	GR	11/29/12	SR	.XXX	±.005	TITLE	DRIP PROOF - "D" FLANGE-PUMP SERIES C				
1	INVERTER DUTY DECAL & CSA LABEL REMOVED	GR	10/29/12	SR	.XXXX	±.0005	MAT'L.	SCALE 1=2				
NO.	REVISION	BY & DATE	CHK	ANG	FINISH	PREV	REF	035683				
THIS DRAWING IN DESIGN AND DETAIL IS OUR PROPERTY AND MUST NOT BE USED EXCEPT IN CONNECTION WITH OUR WORK ALL RIGHTS OF DESIGN AND INVENTION ARE RESERVED THIS IS AN ELECTRONICALLY GENERATED DOCUMENT - DO NOT SCALE THIS PRINT							RFP	CAD FILE	035898CY	SIZE	DRAWING NO.	REV.
							DIST	NLV		B	035898CY	3

VIEW FROM OUTSIDE OF MOTOR AT SWITCH END.



CONNECT LEADS AS FOLLOWS
FOR FOUR CONDUCTOR CORD ()

CORD	L1 (RED)	L2 (WHITE)	L3 (BLACK)	(GREEN)
MOTOR	T1	T2	T3	GROUND

				TOLERANCES UNLESS SPECIFIED				DRAWN GR 03/07/12	
				DEC.	INCHES			CHK ST 03/07/12	
				.X	±.1			APPD	
				.XX	±.01			SCALE 1=1	
				.XXX	±.005			REF 005102-01	
				.XXXX	±.0005	MAT'L. DECAL - 004169		FMF	
NO.	REVISION	BY & DATE	CHK	ANG	±1/2'	FINISH	DRAWING NO.		REV.
			RFP	CAD FILE 005102-01CY			SIZE A	005102-01CY	
			DIST						

THIS DRAWING IN DESIGN AND DETAIL IS OUR PROPERTY AND MUST NOT BE USED EXCEPT IN CONNECTION WITH OUR WORK ALL RIGHTS OF DESIGN AND INVENTION ARE RESERVED THIS IS AN ELECTRONICALLY GENERATED DOCUMENT - DO NOT SCALE THIS PRINT