

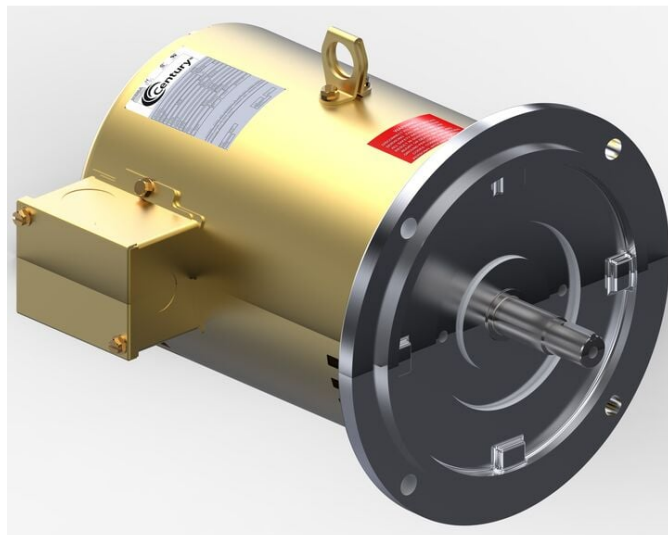
# PRODUCT INFORMATION PACKET



Model No: R232M2A

Catalog No: R232M2A

Pool Pump Motor, 7 1/2 HP, 3 Ph, 50 Hz, 220/440 V, 3000 RPM, 184TDZ Frame, DP



Regal and Century are trademarks of Regal Rexnord Corporation or one of its affiliated companies.

©2023 Regal Rexnord Corporation, All Rights Reserved. MC017097E





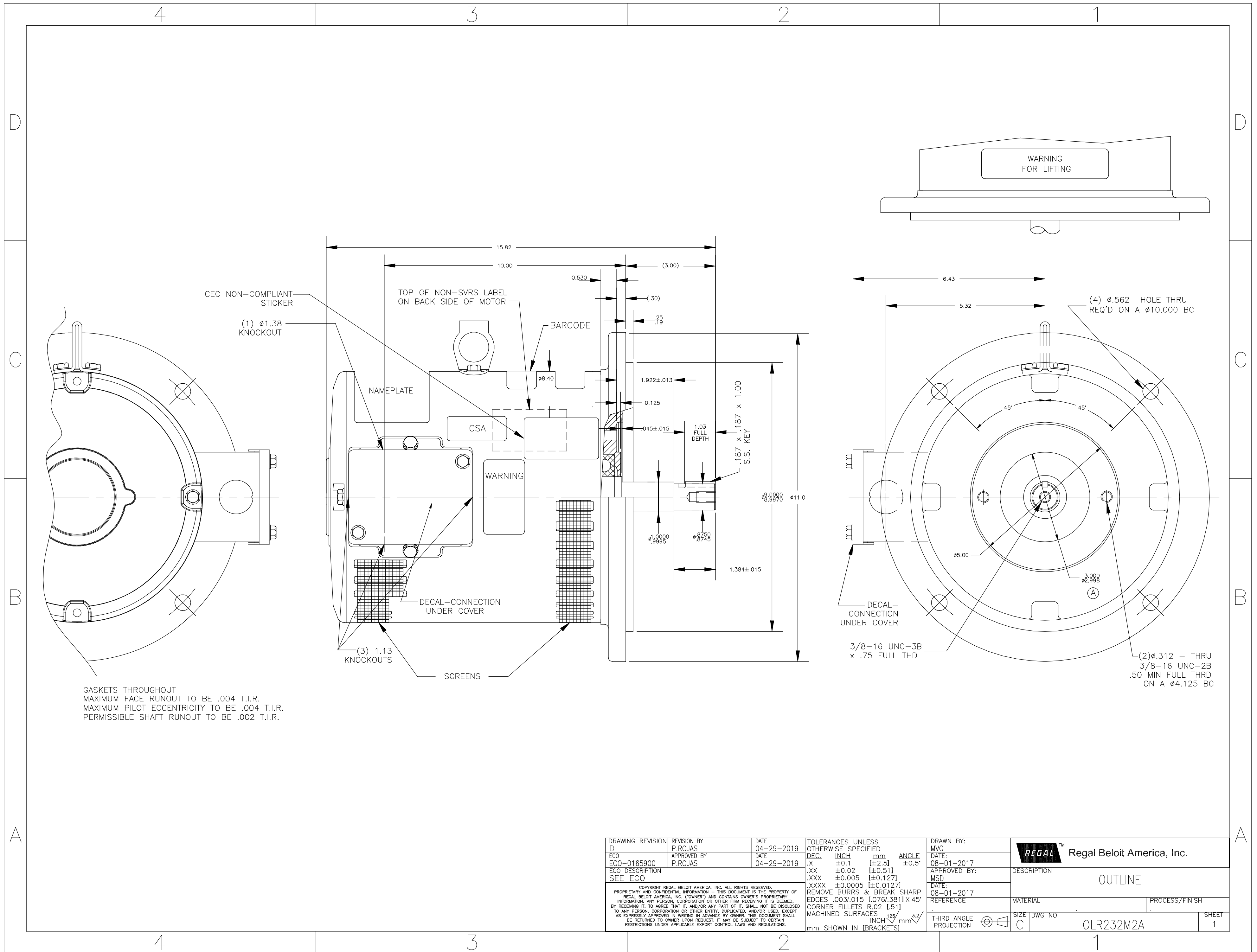
### Nameplate Specifications

Output HP	7 1/2 Hp	Output KW	5.6 kW
Frequency	50 Hz	Voltage	220/440 V
Current	18.6/9.3 A	Speed	3490 rpm
Service Factor	1.15	Phase	3
Efficiency	88.5 %	Duty	Continuous
Insulation Class	F	Frame	184TDZ
Enclosure	Drip Proof	Thermal Protection	No Protection
Ambient Temperature	40 °C	UL	Recognized
CSA	Y	CE	Y
Number of Speeds	1		

### Technical Specifications

Electrical Type	Squirrel Cage Induction Run	Starting Method	Across The Line
Poles	2	Rotation	Reversible
Mounting	Special/Non-Standard	Motor Orientation	Horizontal
Drive End Bearing	Ball	Opp Drive End Bearing	Ball
Frame Material	Rolled Steel	Shaft Type	7/8 Keyed
Overall Length	15.82 in	Frame Length	10.50 in
Shaft Diameter	1.000 in	Shaft Extension	3 in
Connection Drawing	005010.01	Outline Drawing	OLR232M2A

This is an uncontrolled document once printed or downloaded and is subject to change without notice. Date Created:03/23/2023



DRAWING REVISION D	REVISION BY P.ROJAS	DATE 04-29-2019	TOLERANCES UNLESS OTHERWISE SPECIFIED	DRAWN BY: MVG	Regal Beloit America, Inc.
ECO ECO-0165900	APPROVED BY P.ROJAS	DATE 04-29-2019	DEC. INCH mm ANGLE .X $\pm 0.1$ [ $\pm 2.5$ ] $\pm 0.5^\circ$ .XX $\pm 0.02$ [ $\pm 0.511$ ] .XXX $\pm 0.005$ [ $\pm 0.127$ ] .XXXX $\pm 0.0005$ [ $\pm 0.0127$ ]	DATE: 08-01-2017	
ECO DESCRIPTION SEE ECO			REMOVE BURRS & BREAK SHARP EDGES .003/.015 [.076/.381] X 45° CORNER FILLETS R.02 [.51] MACHINED SURFACES $125 \sqrt{\text{mm}}$ $3.2 \sqrt{\text{INCH}}$ mm SHOWN IN [BRACKETS]	APPROVED BY: MSD	DESCRIPTION OUTLINE
COPYRIGHT REGAL BELOIT AMERICA, INC. ALL RIGHTS RESERVED. PROPRIETARY AND CONFIDENTIAL INFORMATION - THIS DOCUMENT IS THE PROPERTY OF REGAL BELOIT AMERICA, INC. (OWNER) AND CONTAINS OWNER'S PROPRIETARY INFORMATION. ANY PERSON, CORPORATION OR OTHER FIRM RECEIVING IT IS DEEMED, BY RECEIVING IT, TO AGREE THAT IT, AND/OR ANY PART OF IT, SHALL NOT BE DISCLOSED TO ANY PERSON, CORPORATION OR OTHER ENTITY, DUPLICATED, AND/OR USED, EXCEPT AS EXPRESSLY APPROVED IN WRITING IN ADVANCE BY OWNER. THIS DOCUMENT SHALL BE RETURNED TO OWNER UPON REQUEST. IT MAY BE SUBJECT TO CERTAIN RESTRICTIONS UNDER APPLICABLE EXPORT CONTROL LAWS AND REGULATIONS.			DATE: 08-01-2017	MATERIAL	PROCESS/FINISH
			THIRD ANGLE PROJECTION	REFERENCE	SIZE DWG NO C OLR232M2A
					SHEET 1

005010-01

VIEW FROM OUTSIDE OF MOTOR AT SWITCH END.



VOLTAGE	L1	L2	L3	JOIN & INSULATE
HIGH	T1	T2	T3	(T4,T7) (T5,T8) (T6,T9)
LOW	T1,T7	T2,T8	T3,T9	T4,T5,T6

				TOLERANCES UNLESS SPECIFIED		<b>REGAL</b> ™ <b>Regal Beloit America, Inc.</b>		DRAWN RDW 04/12/02			
				DEC.	INCHES			CHK			
				.X	±.1			APPD			
				.XX	±.01			SCALE 1=1			
				.XXX	±.005	TITLE		REF FIG.2-51			
A	UPDATED TO REGAL LOGO		SAJ 06/26/15	AJY .XXXX	±.0005	MAT'L.		FMF			
NO.	REVISION		BY & DATE	CHK	ANG ±1/2"	FINISH		PREV			
THIS DRAWING IN DESIGN AND DETAIL IS OUR PROPERTY AND MUST NOT BE USED EXCEPT IN CONNECTION WITH OUR WORK ALL RIGHTS OF DESIGN AND INVENTION ARE RESERVED THIS IS AN ELECTRONICALLY GENERATED DOCUMENT - DO NOT SCALE THIS PRINT				RFP	04/12/02	CAD FILE		00501001	SIZE	DRAWING NO.	REV.
				DIST		BRF-NLV		A	005010-01	A	