

PRODUCT INFORMATION PACKET



Model No: P232M2

Catalog No: P232M2

Close-Coupled Pump Motor, 2 HP, 1 Ph, 60 Hz, 230/115 V, 1800 RPM, 182JP Frame, ODP



Regal and Century are trademarks of Regal Rexnord Corporation or one of its affiliated companies.

©2022 Regal Rexnord Corporation, All Rights Reserved. MC017097E





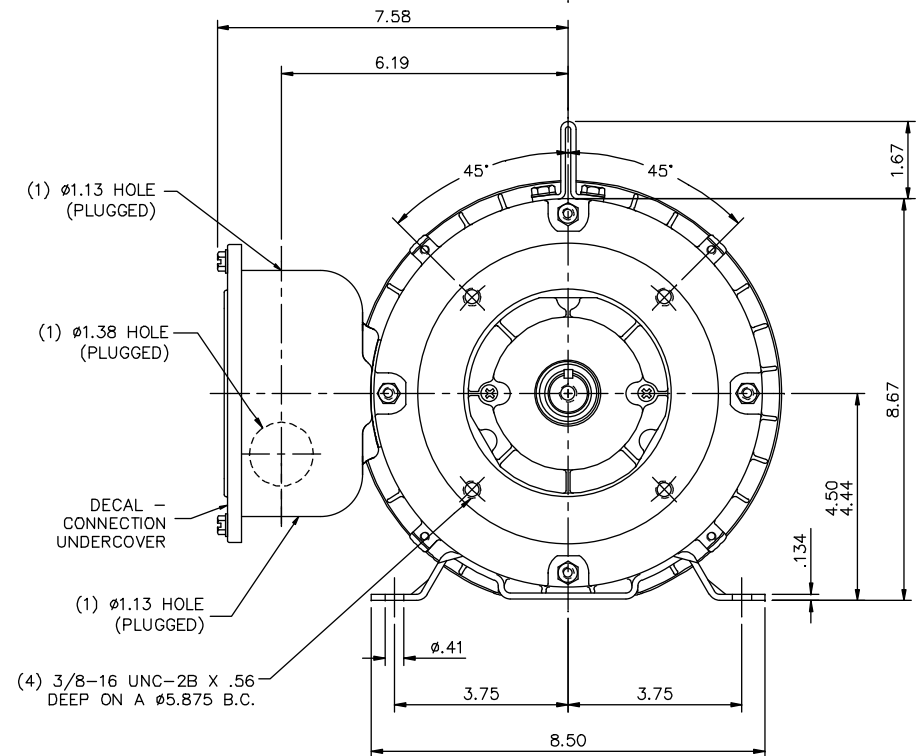
Nameplate Specifications

Output HP	2 Hp	Output KW	1.5 kW
Frequency	60 Hz	Voltage	230/115 V
Current	11.5/23 A	Speed	1750 rpm
Service Factor	1.15	Phase	1
Duty	Continuous	Insulation Class	F
Frame	182JP	Enclosure	Open Drip Proof
Thermal Protection	No Protection	Ambient Temperature	40 °C
UL	Recognized	CSA	Y
Number of Speeds	1		

Technical Specifications

Electrical Type	Capacitor Start	Starting Method	Across The Line
Poles	4	Rotation	Counterclockwise
Mounting	Rigid Base	Drive End Bearing	Ball
Opp Drive End Bearing	Ball	Frame Material	Rolled Steel
Shaft Type	Keyed	Overall Length	19.02 in
Frame Length	10.00 in	Shaft Diameter	1.250 in
Shaft Extension	7.31 in		
Outline Drawing	035891CY	Connection Drawing	005062.01CY


This is an uncontrolled document once printed or downloaded and is subject to change without notice. Date Created:11/28/2022



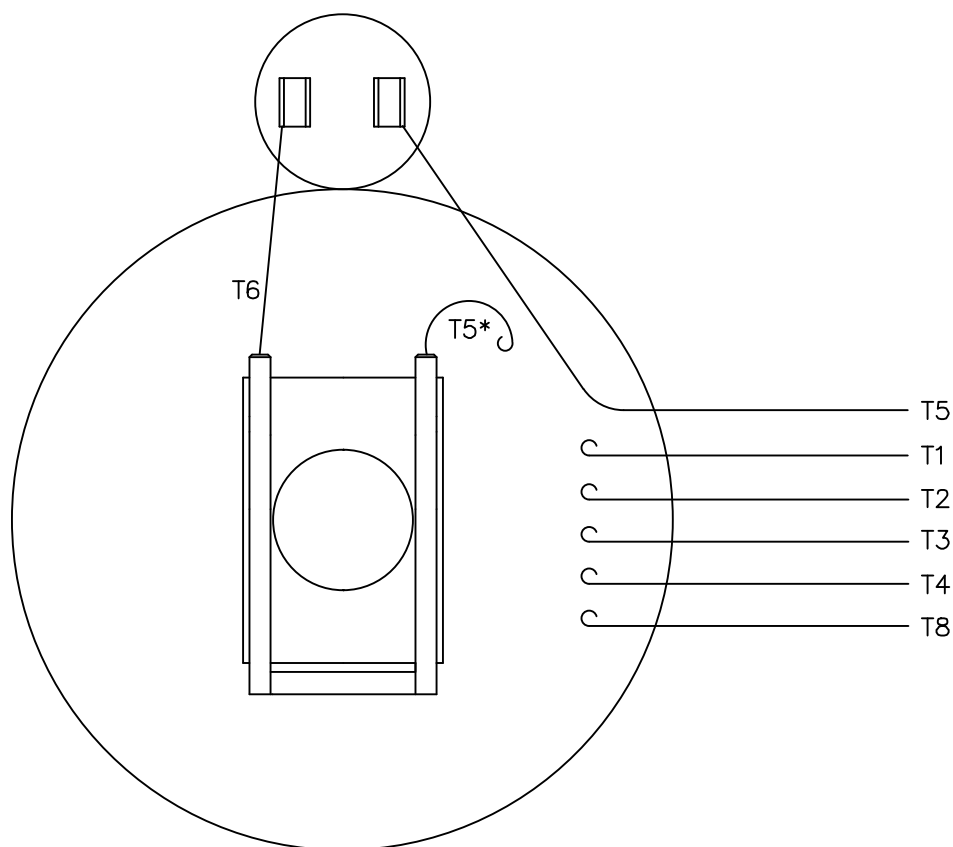
Technical drawing of a shaft assembly. The drawing shows a shaft with a central section labeled "SHAFT EXT" with a length of 7.312. The shaft has a diameter of $\phi 1.248$ in the central section and $\phi 0.8740$ in the outer section. The total length of the shaft is 1.250. The distance from the left end to the start of the "SHAFT EXT" section is 1.0000. The distance from the end of the "SHAFT EXT" section to the right end is 0.8745.

-(1) 3/8-16 UNC-3B X .88 DEEP MIN

MAXIMUM FACE RUNOUT TO BE .004 T.I.R.
MAXIMUM PILOT ECCENTRICITY TO BE .004 T.I.R.
PERMISSIBLE SHAFT RUNOUT TO BE .008 T.I.R.

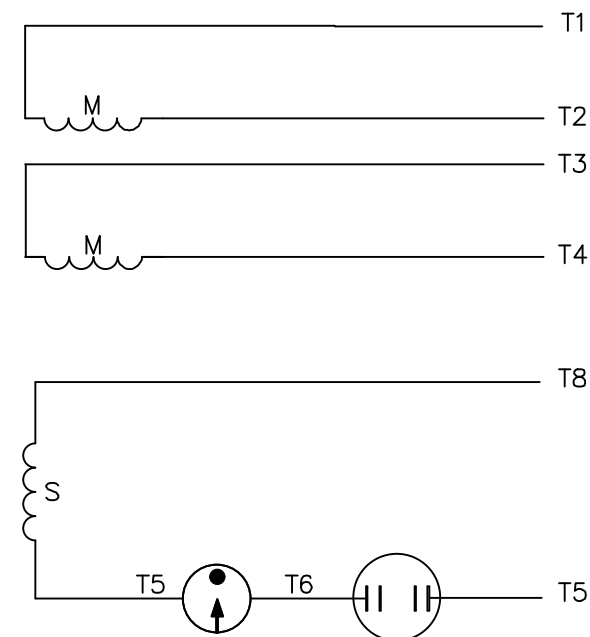
				TOLERANCES UNLESS SPECIFIED		DRAWN GR 07/23/12
			DEC.	INCHES		CHK VS 07/23/12
			.X	±.1		APPD
			.XX	±.03		SCALE 3=8
02	ADDED VENTS ON FRAME	UD 05/16/13	SR .XXX ±.005	TITLE OUTLINE - 180JP FRAME	DRIP PROOF- RIGID "C" - JP PUMP MOUNT	REF 035722
01	CE DECAL REMOVED	UD 05/13/13	SR .XXXX ±.0005	MAT'L	FMF	
NO.	REVISION	BY & DATE	CHK ANG ±1/2"	FINISH		PREV
THIS DRAWING IN DESIGN AND DETAIL IS OUR PROPERTY AND MUST NOT BE USED EXCEPT IN CONNECTION WITH OUR WORK ALL RIGHTS OF DESIGN AND INVENTION ARE RESERVED THIS IS AN ELECTRONICALLY GENERATED DOCUMENT - DO NOT SCALE THIS PRINT				RFP DIST	CAD FILE 035891CY	SIZE B DRAWING NO. 035891CY REV. 02

VIEW FROM OUTSIDE OF MOTOR AT SWITCH END.




* THIS LEAD MAY BE WHITE

LINE LEADS



	ROTATION FACING LEAD END	L1	L2	JOIN
HIGH VOLT	C.C.W.	T1	T4 T5	T2,T3 T8
	C.W.	T1	T4 T8	T2,T3 T5
LOW VOLT	C.C.W.	T1,T3 T8	T2,T4 T5	---
	C.W.	T1,T3 T5	T2,T4 T8	---

				TOLERANCES UNLESS SPECIFIED			DRAWN GR 07/23/12		
				DEC.	INCHES		CHK VS 07/23/12		
				.X	±.1		APPD		
				.XX	±.01		SCALE 1=1		
				.XXX	±.005	TITLE EXT. WIRING DIAGRAM TYPE "C" W/O PROTECTOR		REF 005062-01	
				.XXXX	±.0005	MAT'L. DECAL - 004012		FMF	
NO.	REVISION	BY & DATE	CHK	ANG	±1/2"	FINISH		PREV	
THIS DRAWING IN DESIGN AND DETAIL IS OUR PROPERTY AND MUST NOT BE USED EXCEPT IN CONNECTION WITH OUR WORK ALL RIGHTS OF DESIGN AND INVENTION ARE RESERVED THIS IS AN ELECTRONICALLY GENERATED DOCUMENT - DO NOT SCALE THIS PRINT			RFP		CAD FILE 00506201CY		SIZE	DRAWING NO.	REV.
			DIST NLV				A	005062-01CY	

THIS DRAWING IN DESIGN AND DETAIL IS OUR PROPERTY AND MUST NOT BE USED EXCEPT
IN CONNECTION WITH OUR WORK ALL RIGHTS OF DESIGN AND INVENTION ARE RESERVED
THIS IS AN ELECTRONICALLY GENERATED DOCUMENT - DO NOT SCALE THIS PRINT

RFP
DIST NLV

CAD FILE 00506201CY

SIZE
A

DRAWING NO.
005062-01CY

REV.