

PRODUCT INFORMATION PACKET



Model No: P229M2
Catalog No: P229M2

Close-Coupled Pump Motor, 3 HP, 1 Ph, 60 Hz, 230/115 V, 3600 RPM, 182JM Frame, DP



Regal and Century are trademarks of Regal Rexnord Corporation or one of its affiliated companies.
©2022 Regal Rexnord Corporation, All Rights Reserved. MC017097E





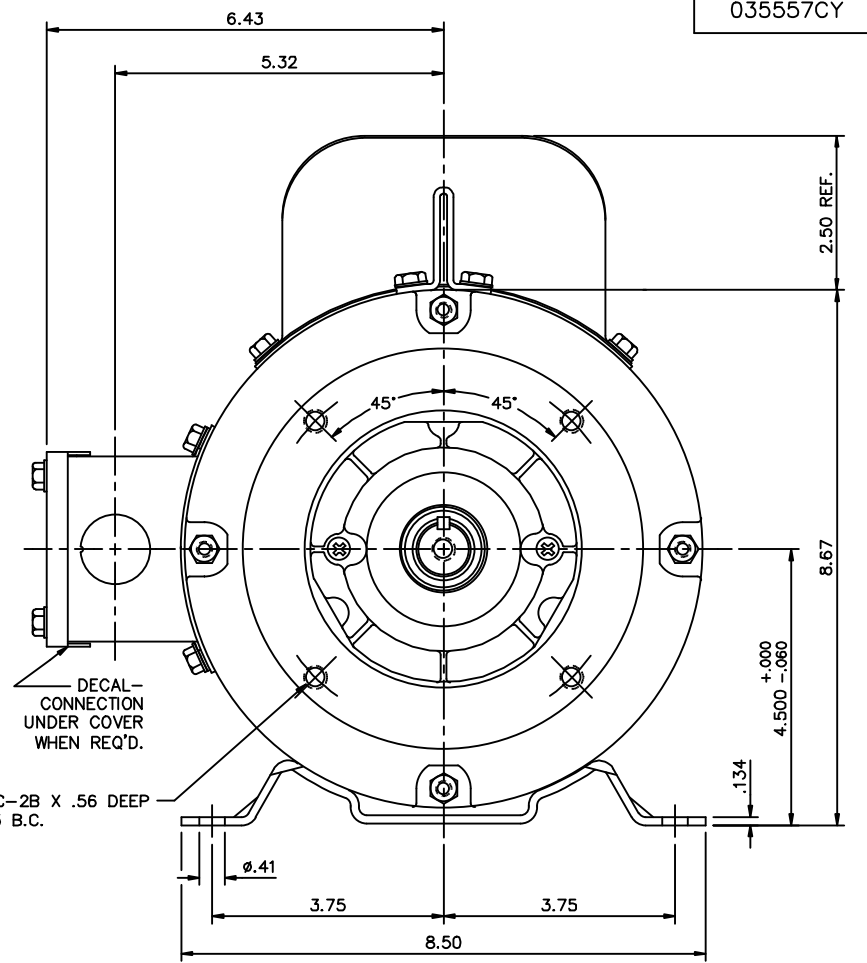
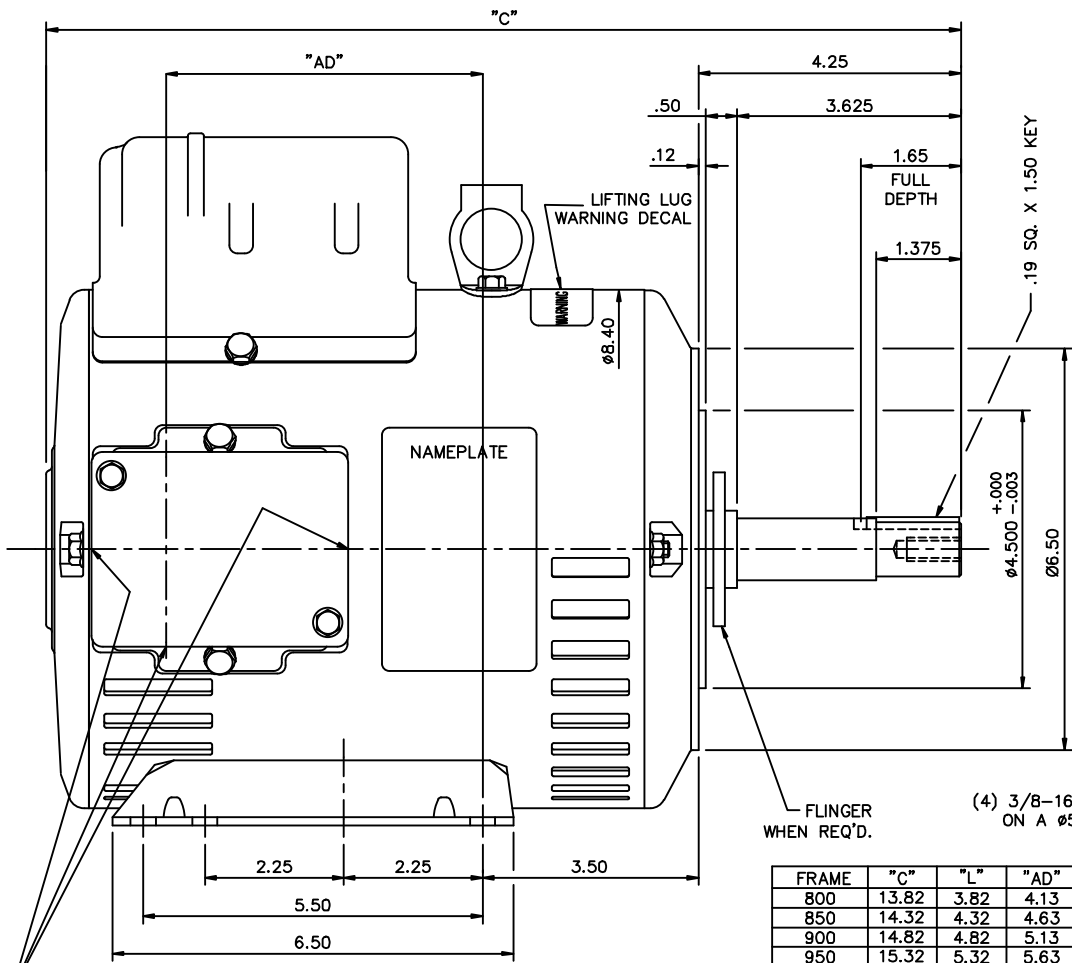
Nameplate Specifications

Output HP	3 Hp	Output KW	2.2 kW
Frequency	60 Hz	Voltage	230/115 V
Current	16.1/32 A	Speed	3500 rpm
Service Factor	1.15	Phase	1
Duty	Continuous	Insulation Class	F
Frame	182JM	Enclosure	Drip Proof
Thermal Protection	No Protection	Ambient Temperature	60 °C
UL	Recognized	CSA	Y
CE	Y	Number of Speeds	1

Technical Specifications

Electrical Type	Capacitor Start	Starting Method	Across The Line
Poles	2	Rotation	Selective Counterclockwise
Mounting	Rigid Base	Drive End Bearing	Ball
Opp Drive End Bearing	Ball	Frame Material	Rolled Steel
Shaft Type	Keyed	Overall Length	15.32 in
Frame Length	9.50 in	Shaft Diameter	1.250 in
Shaft Extension	4.245 in		
Connection Drawing	005062.01CY	Outline Drawing	035557CY

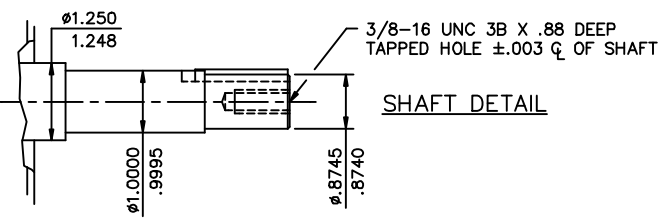
This is an uncontrolled document once printed or downloaded and is subject to change without notice. Date Created:11/28/2022



(4) 3/8-16 UNC-2B X .56 DEEP ON A Ø5.875 B.C.

FRAME	"C"	"L"	"AD"
800	13.82	3.82	4.13
850	14.32	4.32	4.63
900	14.82	4.82	5.13
950	15.32	5.32	5.63
1000	15.82	5.82	6.13
1050	16.32	6.32	6.63
1100	16.82	6.82	7.13
1150	17.32	7.32	7.63
1200	17.82	7.82	8.13

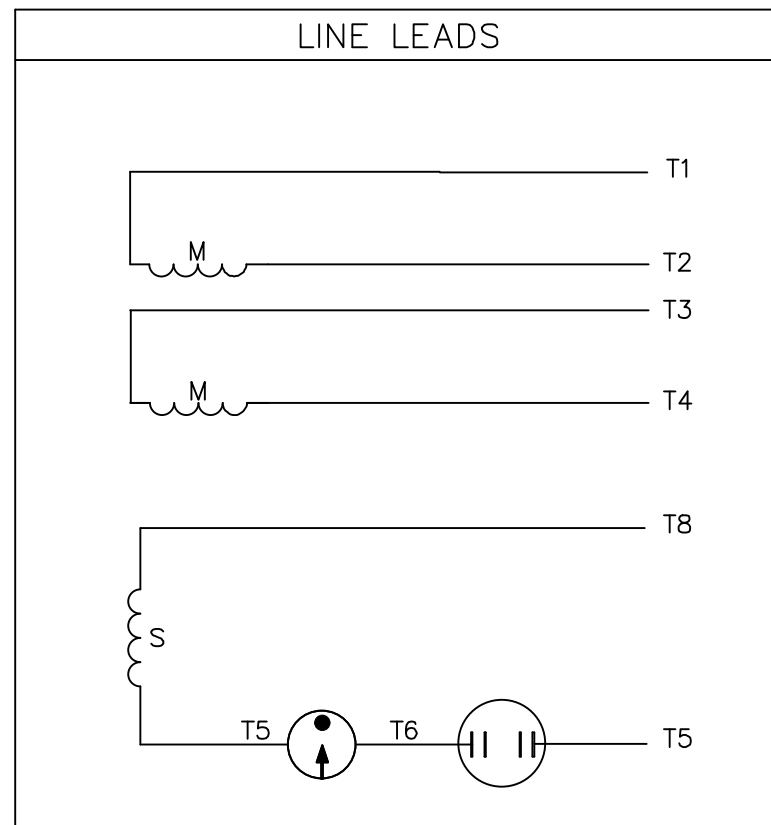
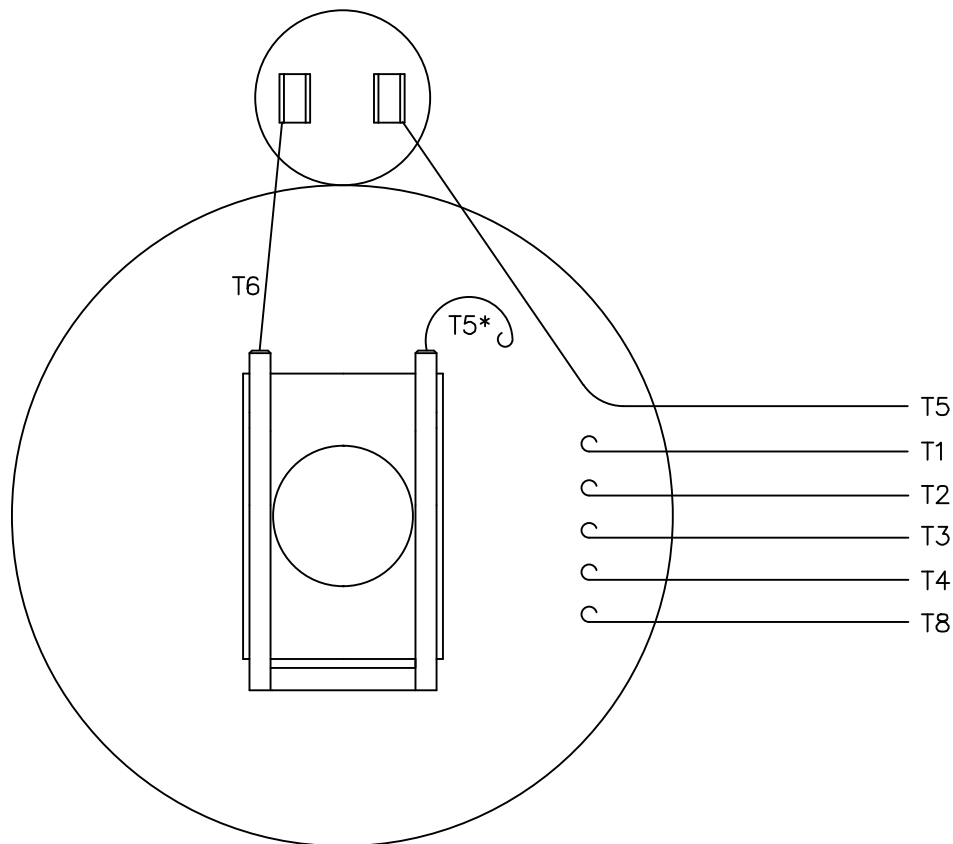
Ø1.13 KNOCKOUTS (3) REQUIRED



GASKETS THROUGHOUT
 MAXIMUM FACE RUNOUT TO BE .004 T.I.R.
 MAXIMUM PILOT ECCENTRICITY TO BE .004 T.I.R.
 PERMISSIBLE SHAFT RUNOUT TO BE .002 T.I.R.

NO.		REVISION		BY & DATE		TOLERANCES UNLESS SPECIFIED		CENTURY	DRAWN GR 07/25/12		
CHK	ANG	CHK	ANG	CHK	ANG	DEC.	INCHES		CHK	VS 07/25/12	
						.X	±.1		APPD		
						.XX	±.03	TITLE	SCALE	1-2	
						.XXX	±.005	TITLE	REF	035557	
						.XXXX	±.0005	MAT'L	FMF		
							±1/2'	FINISH	PREV		
THIS DRAWING IN DESIGN AND DETAIL IS OUR PROPERTY AND MUST NOT BE USED EXCEPT IN CONNECTION WITH OUR WORK ALL RIGHTS OF DESIGN AND INVENTION ARE RESERVED THIS IS AN ELECTRONICALLY GENERATED DOCUMENT - DO NOT SCALE THIS PRINT						RFP		CAD FILE	035557CY	SIZE	DRAWING NO.
						DIST				B	035557CY
											REV.

VIEW FROM OUTSIDE OF MOTOR AT SWITCH END.



	ROTATION FACING LEAD END	L1	L2	JOIN
HIGH VOLT	C.C.W.	T1	T4 T5	T2,T3 T8
	C.W.	T1	T4 T8	T2,T3 T5
LOW VOLT	C.C.W.	T1,T3 T8	T2,T4 T5	---
	C.W.	T1,T3 T5	T2,T4 T8	---

* THIS LEAD MAY BE WHITE

		TOLERANCES UNLESS SPECIFIED	
		DEC.	INCHES
		.X	±.1
		.XX	±.01
		.XXX	±.005
		.XXXX	±.0005
NO.	REVISION	BY & DATE	CHK ANG ±1/2'



TITLE EXT. WIRING DIAGRAM TYPE "C" W/O PROTECTOR MAT'L. DECAL - 004012 FINISH	DRAWN	GR 07/23/12
	CHK	VS 07/23/12
	APPD	
	SCALE	1=1
	REF	005062-01
	FMF	
	PREV	

THIS DRAWING IN DESIGN AND DETAIL IS OUR PROPERTY AND MUST NOT BE USED EXCEPT IN CONNECTION WITH OUR WORK ALL RIGHTS OF DESIGN AND INVENTION ARE RESERVED THIS IS AN ELECTRONICALLY GENERATED DOCUMENT - DO NOT SCALE THIS PRINT		RFP	CAD FILE	00506201CY	SIZE	DRAWING NO.	REV.
		DIST	NLV		A	005062-01CY	