

# PRODUCT INFORMATION PACKET



Model No: P228M2  
Catalog No: P228M2

Close-Coupled Pump Motor, 2.0 HP, 1 Ph, 60 Hz, 115/230 V, 1800 RPM, 182JM Frame, ODP



Regal and Century are trademarks of Regal Rexnord Corporation or one of its affiliated companies.  
©2022 Regal Rexnord Corporation, All Rights Reserved. MC017097E





### Nameplate Specifications

Output HP	2.0 Hp	Output KW	1.5 kW
Frequency	60 Hz	Voltage	115/230 V
Current	23/11.5 A	Speed	1750 rpm
Service Factor	1.15	Phase	1
Duty	Continuous	Insulation Class	F
Frame	182JM	Enclosure	Open Drip Proof
Thermal Protection	No Protection	Ambient Temperature	40 °C
UL	Recognized	CSA	Y
CE	Y	Number of Speeds	1

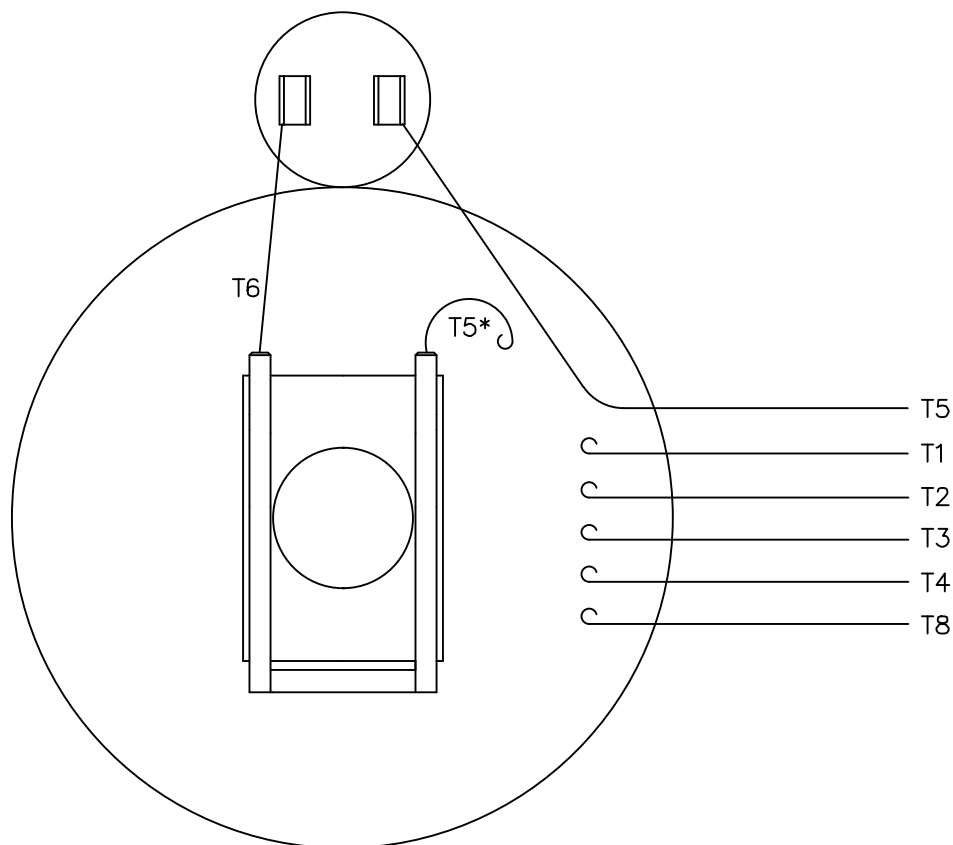
### Technical Specifications

Electrical Type	Capacitor Start	Starting Method	Across The Line
Poles	4	Rotation	Counterclockwise
Mounting	Rigid Base	Drive End Bearing	Ball
Opp Drive End Bearing	Ball	Frame Material	Rolled Steel
Shaft Type	Keyed	Overall Length	14.95 in
Frame Length	9.00 in	Shaft Diameter	1.250 in
Shaft Extension	4.25 in		
Outline Drawing	035890CY	Connection Drawing	005062.01CY

This is an uncontrolled document once printed or downloaded and is subject to change without notice. Date Created:11/28/2022

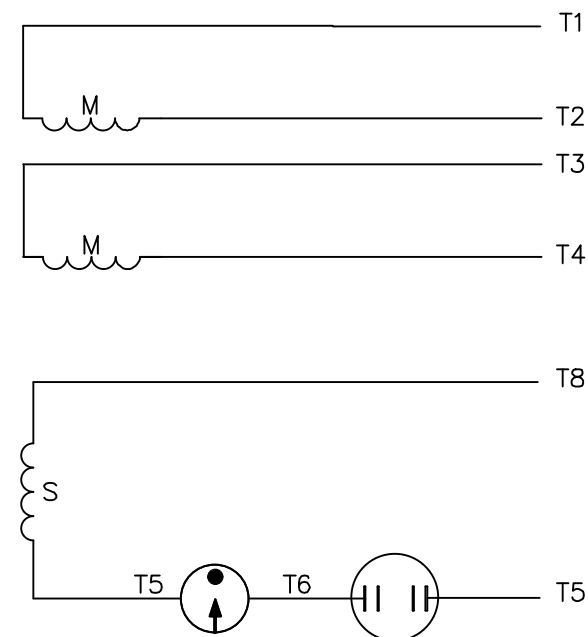


VIEW FROM OUTSIDE OF MOTOR AT SWITCH END.




\* THIS LEAD MAY BE WHITE

## LINE LEADS



	ROTATION FACING LEAD END	L1	L2	JOIN
HIGH VOLT	C.C.W.	T1	T4 T5	T2,T3 T8
	C.W.	T1	T4 T8	T2,T3 T5
LOW VOLT	C.C.W.	T1,T3 T8	T2,T4 T5	---
	C.W.	T1,T3 T5	T2,T4 T8	---

		TOLERANCES UNLESS SPECIFIED			DRAWN GR 07/23/12	
		DEC.	INCHES		CHK VS 07/23/12	
		.X	±.1		APPD	
		.XX	±.01		SCALE 1=1	
		.XXX	±.005		REF 005062-01	
		.XXXX	±.0005	MAT'L. DECAL - 004012		FMF
NO.	REVISION	BY & DATE	CHK	ANG	FINISH	PREV
			RFP	CAD FILE 00506201CY		SIZE A
			DIST NLV			DRAWING NO. 005062-01CY
					REV.	

THIS DRAWING IN DESIGN AND DETAIL IS OUR PROPERTY AND MUST NOT BE USED EXCEPT  
IN CONNECTION WITH OUR WORK ALL RIGHTS OF DESIGN AND INVENTION ARE RESERVED  
THIS IS AN ELECTRONICALLY GENERATED DOCUMENT - DO NOT SCALE THIS PRINT