

PRODUCT INFORMATION PACKET



Model No: M322M2

Catalog No: M322M2

10.0/2.5 HP 2 speed General Purpose Motor, 3 phase, 1800/900 RPM, 200-230 V, 213T Frame, ODP
General Purpose Motors



Regal and Century are trademarks of Regal Rexnord Corporation or one of its affiliated companies.
©2021 Regal Rexnord Corporation, All Rights Reserved. MC017097E





Nameplate Specifications

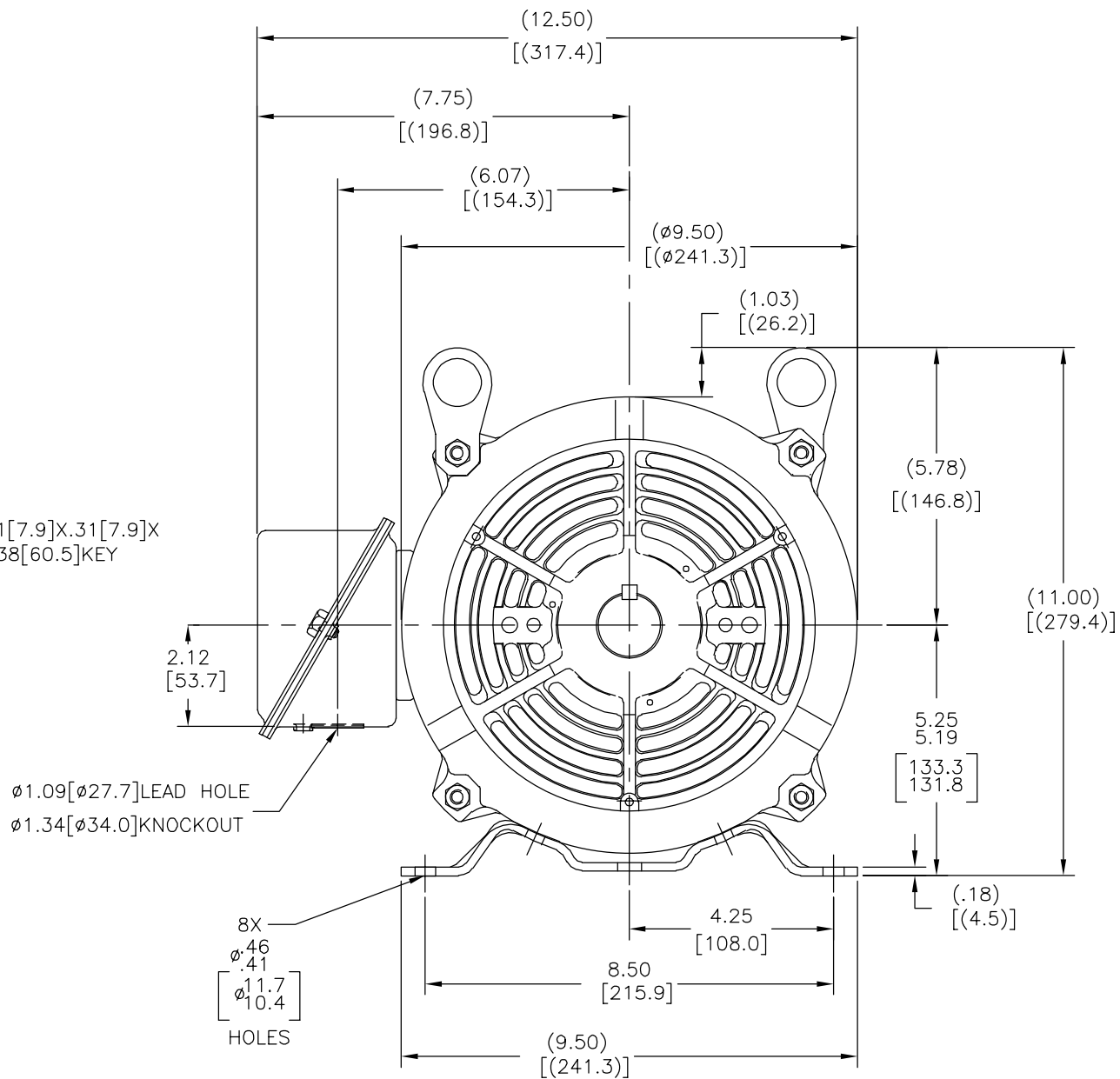
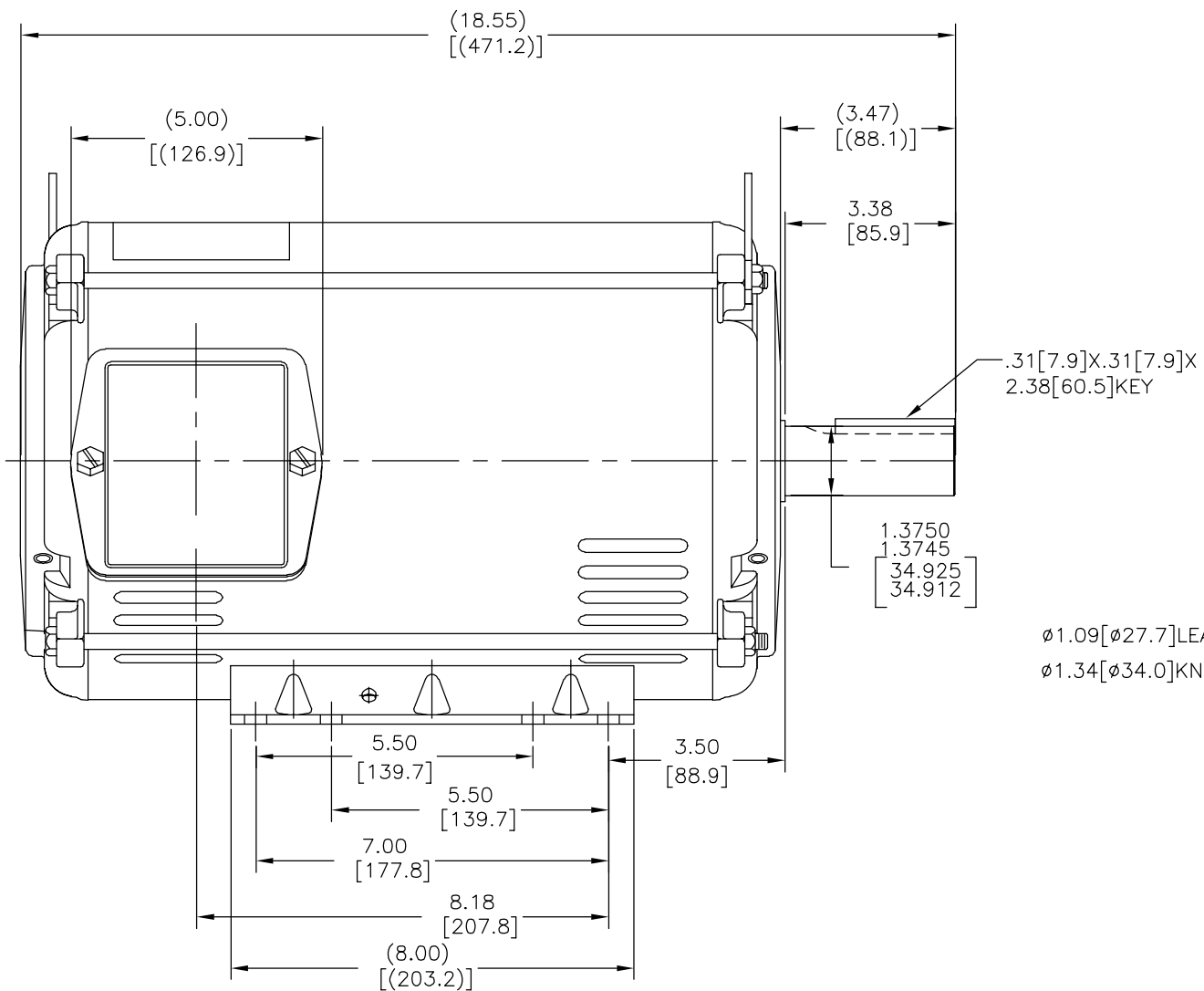
| | | | |
|--------------------|---------------------|---------------------|-----------------|
| Output HP | 10.0/2.5 Hp | Output KW | 7.5 kW |
| Frequency | 60 Hz | Voltage | 200-230 V |
| Current | 27.6-25.6/10-10.2 A | Speed | 1765/880 rpm |
| Service Factor | 1.15 | Phase | 3 |
| Duty | Continuous | Insulation Class | F |
| Frame | 213T | Enclosure | Open Drip Proof |
| Thermal Protection | None | Ambient Temperature | 40 °C |
| UL | Recognized | CSA | Y |
| CE | Y | Number of Speeds | 2-1-VT |

Technical Specifications

| | | | |
|-----------------------|--------------------|--------------------|-----------------|
| Electrical Type | Polyphase | Starting Method | Across The Line |
| Poles | 4/ 8 | Rotation | Reversible |
| Mounting | Rigid Base | Drive End Bearing | Ball |
| Opp Drive End Bearing | Ball | Frame Material | Rolled Steel |
| Shaft Type | Keyed | Overall Length | 18.55 in |
| Frame Length | 11.00 in | Shaft Diameter | 1.375 in |
| Shaft Extension | 3.47 in | | |
| Outline Drawing | SS86500CY-1240-S01 | Connection Drawing | A-EE7322CY |

This is an uncontrolled document once printed or downloaded and is subject to change without notice. Date Created:10/07/2021

| REV | ECO | REV BY | DATE | APPD | DATE |
|-----|---------|---------|------------|----------|------------|
| A | 0035621 | M.AVILA | 07-24-2013 | J.ORTEGA | 07-24-2013 |



NOTES:

1. NAMEPLATE TO BE READ FROM C'BOX SIDE OF MOTOR.
2. BOX CAN BE MOUNTED IN 90° STEPS.
3. BOX CAN MOUNTED ON OPPOSITE SIDE BY REMOVING BRACKETS AND TURNING FRAME 180° (EXCEPT AS NOTED)

GEOMETRIC CHARACTERISTICS & SYMBOLS
□ FLATNESS
— STRAIGHTNESS
∠ ANGULARITY
⊥ PERPENDICULARITY (SQUARENESS)
// PARALLELISM
○ ROUNDNESS (CIRCULARITY)
⌀ CYLINDRICITY
△ PROFILE OF ANY SURFACE
∩ PROFILE OF ANY LINE
⌀ RUNOUT
⊕ TRUE POSITION
◎ CONCENTRICITY
≡ SYMMETRY

ASME Y14.5M 1994

UNLESS OTHERWISE SPECIFIED
DIM. TOLERANCES ARE AS FOLLOWS:
INCH X XX XXX XXXX
mm ±.1 ±.02 ±.005 ±.0005
mm ±0.5 ±0.13 ±0.013
ANG. ±.50 DEG
REMOVE BURRS & BREAK SHARP EDGES:
INCH .003-.015 mm 0.1-0.4
CORNER FILLETS TO:
INCH .020 mm 0.5
MACHINE SURFACES:
INCH 125 mm 3.2
METRIC DIMS. SHOWN IN [BRACKETS]

DR BY:

M.AVILA

07-24-2013

APPD:

D.JAMORA

07-24-2013

THIRD ANGLE PROJECTION



EDS DATE 11-11-2011
FORMAT REV H

CONFIDENTIAL: THIS DRAWING AND ITS INFORMATION ARE THE EXCLUSIVE AND CONFIDENTIAL PROPERTY OF REGAL-BELOIT CORPORATION AND ARE NOT TO BE DISCLOSED, DUPLICATED, DISTRIBUTED OR OTHERWISE USED WITHOUT THE WRITTEN CONSENT OF REGAL-BELOIT CORPORATION. -ALL RIGHTS RESERVED.



REGAL-BELOIT CORPORATION

DESCRIPTION

OUTLINE

SIZE

C

DWG NO

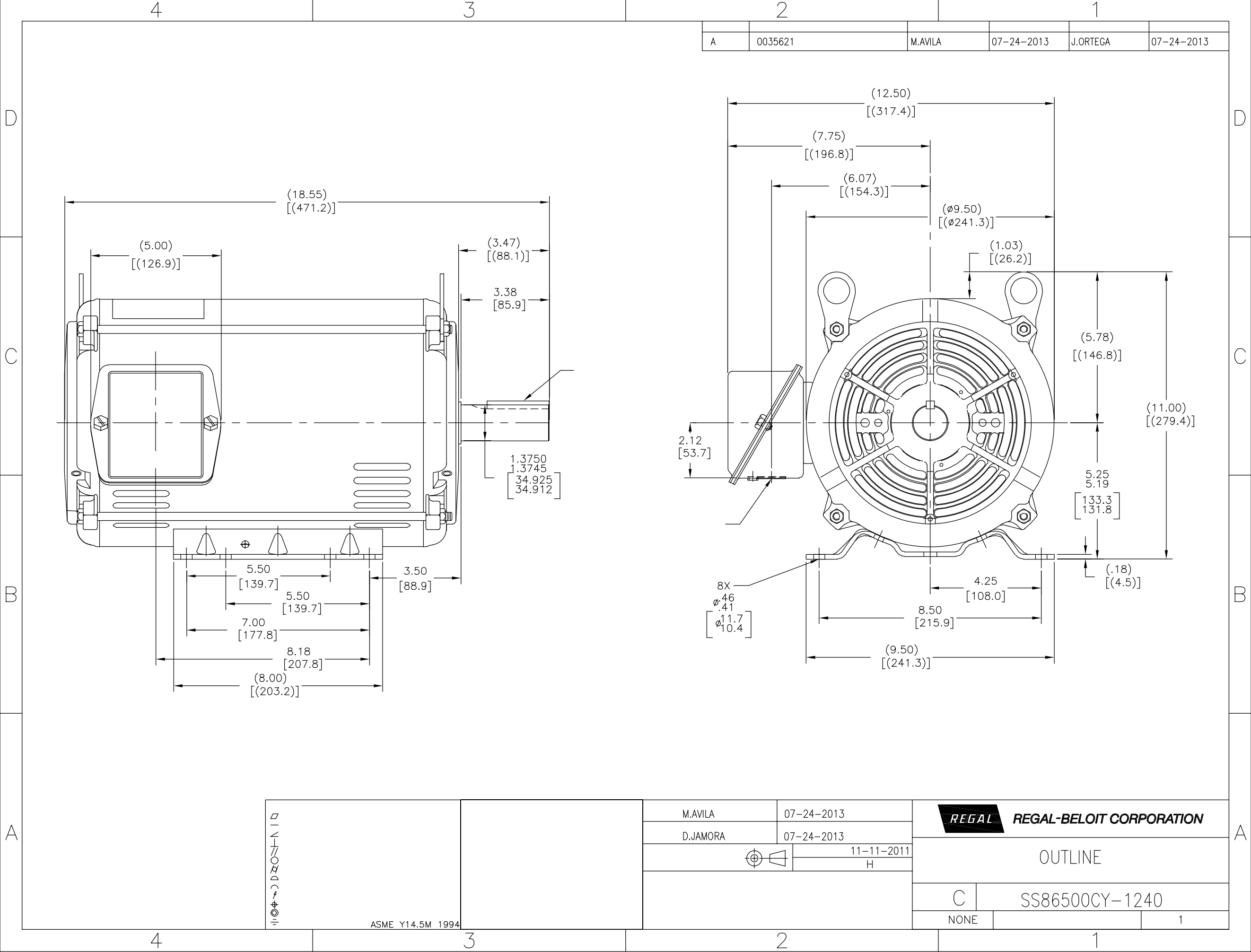
SS86500CY-1240

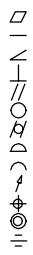

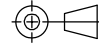
SCALE

NONE

SHEET

1

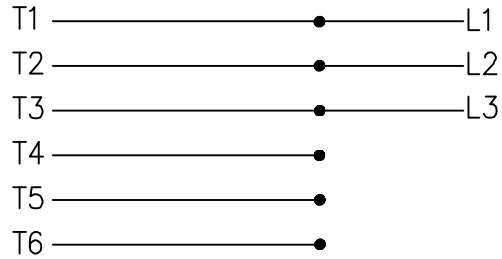


| | | | | | | |
|--|--|--|------------|--|----------------|---|
| <div></div> <div>ASME Y14.5M 1994</div> | | M.AVILA | 07-24-2013 | <div> REGAL-BELOIT CORPORATION</div> | | |
| | | D.JAMORA | 07-24-2013 | OUTLINE | | |
| | | <div></div> | | | | |
| | | | | 11-11-2011 | C | |
| | | | | H | SS86500CY-1240 | |
| | | | | NONE | | 1 |

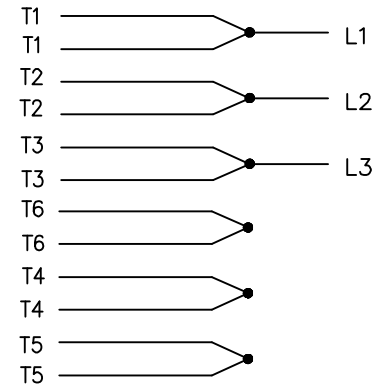
A-EE7322CY

THREE PHASE MOTOR
SINGLE VOLTAGE
TWO SPEED-SGL.WDG. FOR DUEL LEADS
VARIABLE TORQUE

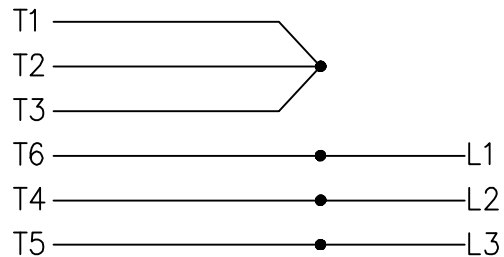
LOW SPEED



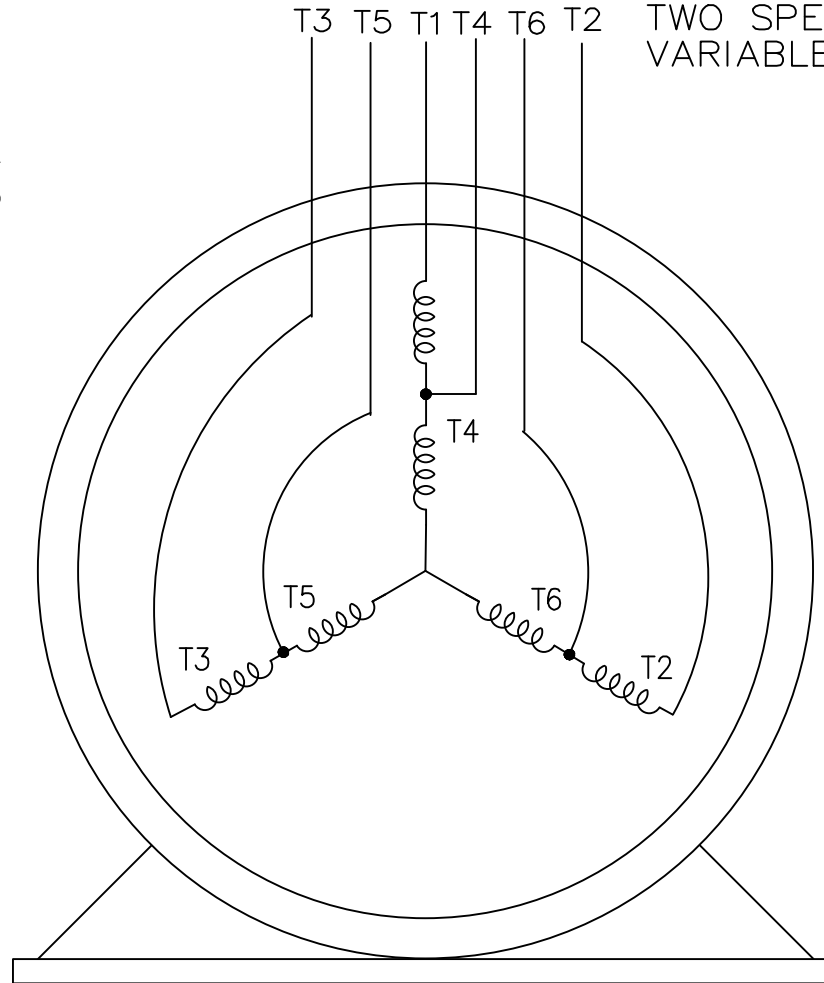
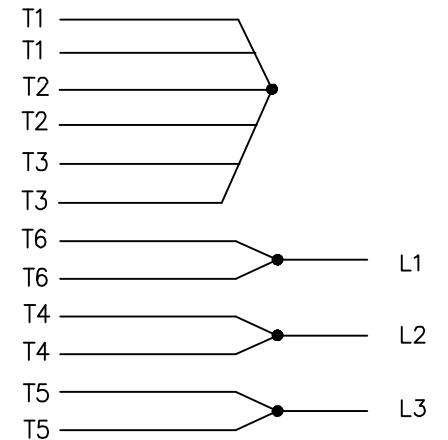
LOW SPEED



HIGH SPEED



HIGH SPEED



VIEW OF TERMINAL END

T612C
T48B



DRAWN GR 03/29/12
CHK ST 03/29/12
APPD
SCALE 1=1
REF EE7322
FMF
PREV

TITLE CONNECTION DIAGRAM
3Ø-SINGLE VOLTAGE-2 SPEED.

MAT'L.

| NO. | REVISION | BY & DATE | CHK | ANG | TOLERANCES UNLESS SPECIFIED | |
|-----|----------|-----------|-----|-----|--------------------------------|--------|
| | | | | | DEC. | INCHES |
| | | | | | .X | ±.1 |
| | | | | | .XX | ±.02 |
| | | | | | .XXX | ±.005 |
| | | | | | .XXXX | ±.0005 |
| | | | | | | ±7'30" |

THIS DRAWING IN DESIGN AND DETAIL IS OUR PROPERTY AND MUST NOT BE USED EXCEPT
IN CONNECTION WITH OUR WORK ALL RIGHTS OF DESIGN AND INVENTION ARE RESERVED
THIS IS AN ELECTRONICALLY GENERATED DOCUMENT - DO NOT SCALE THIS PRINT

RFP
DIST WA

CAD FILE A-EE7322CY

SIZE A
DRAWING NO. A-EE7322CY
PAGE OF
REV.