

PRODUCT INFORMATION PACKET

Model No: M514M2

Catalog No: M514M2

General Purpose Motors, Drip Proof, 30 HP, 3 Ph, 60 Hz, 460 V, 1770 RPM, S286T



Regal and are trademarks of Regal Rexnord Corporation or one of its affiliated companies.
©2022 Regal Rexnord Corporation, All Rights Reserved. MC017097E

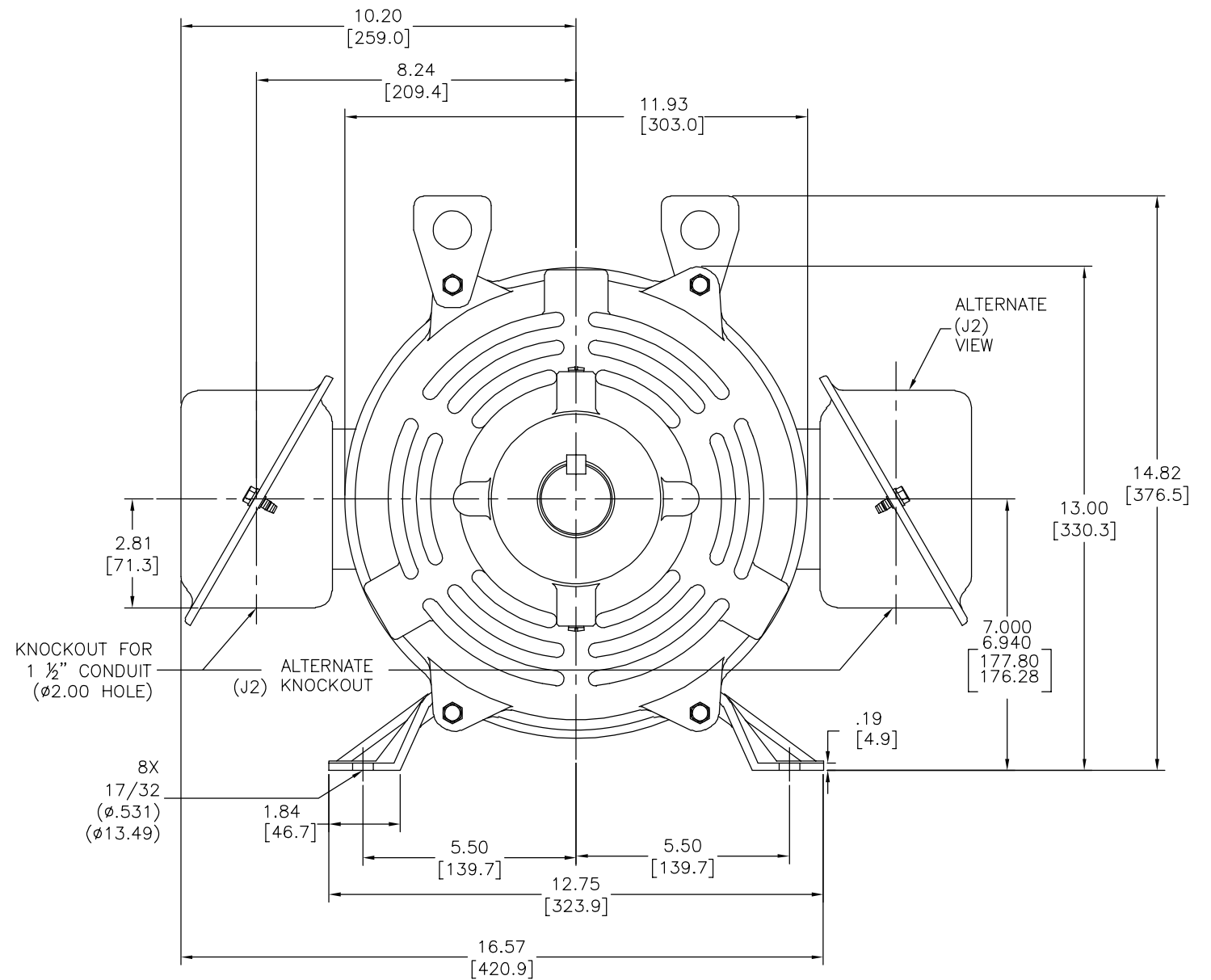
Nameplate Specifications

Output HP	30.0-13.3 Hp	Output KW	97.0 kW
Frequency	60 Hz	Voltage	460 V
Current	36.0/18.5 A	Speed	1770/1170 rpm
Service Factor	1.15	Phase	3
Duty	Continuous	Insulation Class	F
Frame	S286T	Enclosure	Drip Proof
Thermal Protection	None	Ambient Temperature	40 °C
UL	Recognized	CSA	Y
CE	N	Number of Speeds	2-2-VT

Technical Specifications

Electrical Type	Three Phase	Starting Method	Across The Line
Poles	4/6	Rotation	Reversible Counterclockwise
Mounting	Rigid Base	Drive End Bearing	Ball
Opp Drive End Bearing	Ball	Frame Material	Rolled Steel
Shaft Type	Keyed	Overall Length	24.22 in
Frame Length	14.00 in	Shaft Diameter	1.875 in
Shaft Extension	5.09 in		
Connection Drawing	80022806.PCX	Outline Drawing	18720601-001-S01

This is an uncontrolled document once printed or downloaded and is subject to change without notice. Date Created:05/06/2022





- NOTES:
1. CONDUIT BOX MAY BE ROTATED IN 90° INCREMENTS.
 2. MOTOR IS SUITABLE FOR FIELD CONVERSION FROM AN F1 TO AN F2 CONDUIT BOX LOCATION.
 3. MOTOR VENTILATION: AIR INTAKE THROUGH OPENINGS IN THE FACE OF EACH BRACKET AND EXHAUSTED THROUGH THE VENT SLOTS ON EACH END OF THE SHELL.

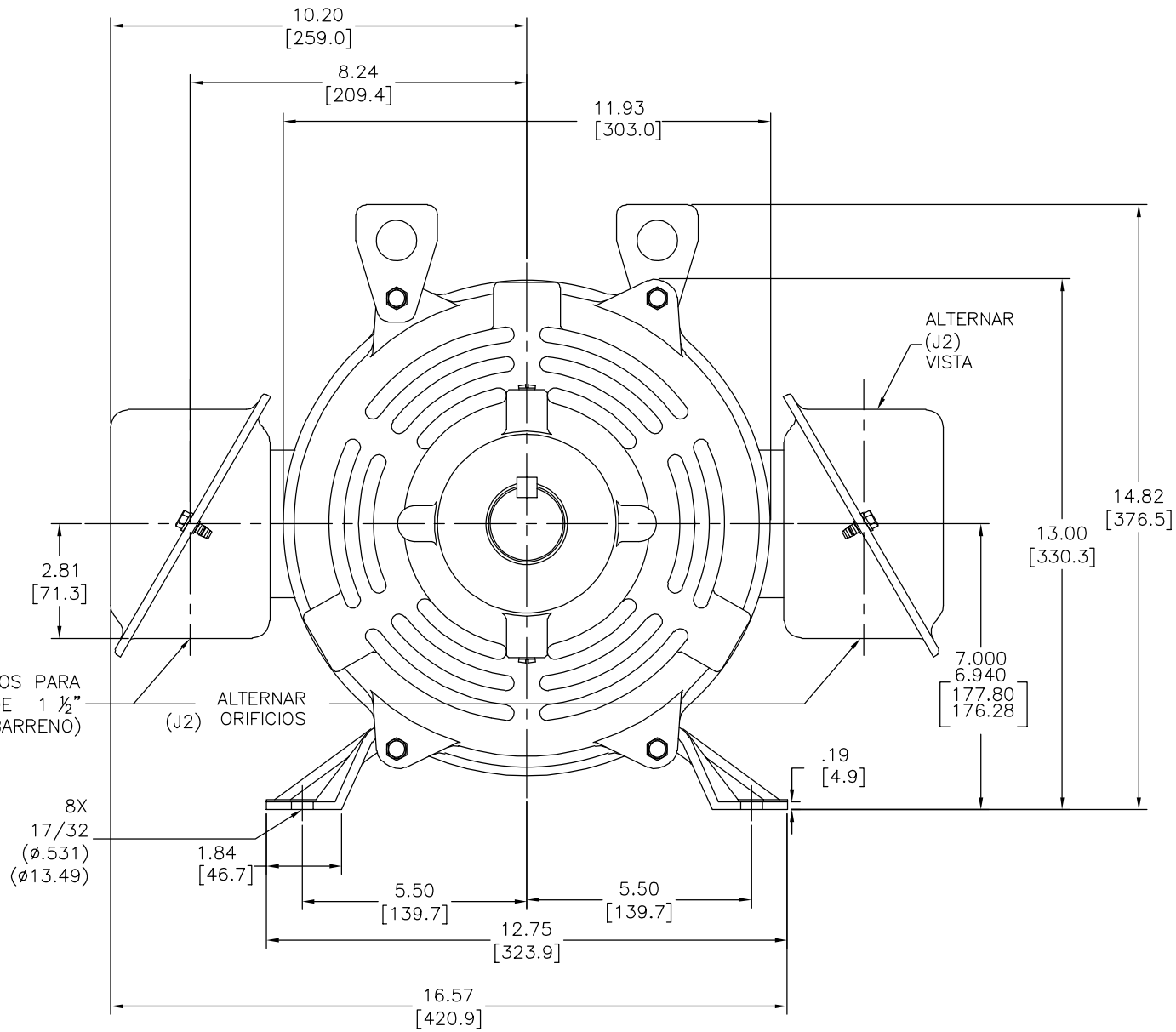
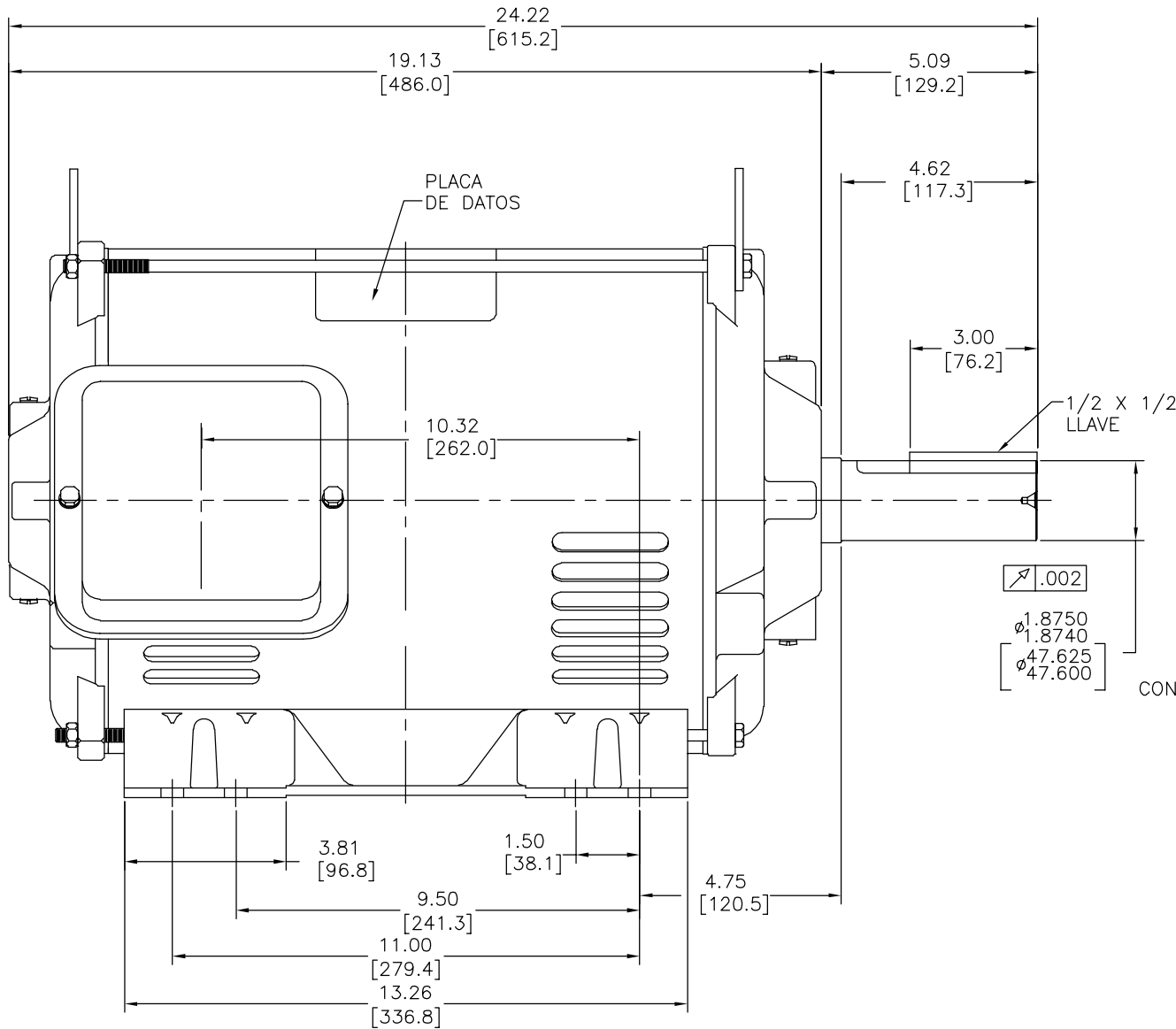
MOTOR DESCRIPTION:

3 PHASE OPEN DRIPPROOF STEEL SHELL 284T OR 286T MOUNTING.
OTHER MOUNTING ORIENTATIONS ARE ACCEPTABLE; HOWEVER WHEN MOUNTED OTHER
THAN HORIZONTAL; MOTOR WILL NOT BE DRIPPROOF AS DEFINED BY NEMA.

CERTIFICATION OF A.C. MOTORS		
CERTIFIED FOR _____		
SPEC. NO. _____	ORDER NO. _____	
ORDER I.D. _____	I.D. NO. _____	EMI EMI
TYPE _____	FRAME _____	H.P. _____
R.P.M. _____	VOLTS _____	PHASE _____
HERTZ _____	AMPS _____	CODE _____
REMARKS _____		
APPROVED BY _____		DATE: _____

GEOMETRIC CHARACTERISTICS & SYMBOLS / FLATNESS / STRAIGHTNESS / ANGULARITY / PERPENDICULARITY (SQUARENESS) / PARALLELISM / ROUNDNESS (CIRCULARITY) / CYLINDRICITY / PROFILE OF ANY SURFACE / PROFILE OF ANY LINE / RUNOUT / TRUE POSITION / CONCENTRICITY / SYMMETRY	UNLESS OTHERWISE SPECIFIED DIM. TOLERANCES ARE AS FOLLOWS: INCH $\pm .1$ $\pm .02$ $\pm .005$ $\pm .0005$ mm ± 0.5 ± 0.13 ± 0.013 ANG. ± 50 DEG REMOVE BURRS & BREAK SHARP EDGES: INCH .003-.015 mm 0.1-0.4 CORNER FILLETS TO: INCH .020 mm 0.5 MACHINE SURFACES: INCH 125 mm 3.2	DR BY: AJB APPD: JAS	01-14-2004 01-14-2004	<div style="text-align: right;">  REGAL-BELOIT CORPORATION </div> <div style="text-align: center;"> <p>OUTLINE</p> <p>S284T/S286T ODP EE STD</p> </div> <div> SIZE D DWG NO 18720601-001 </div>
		THIRD ANGLE PROJECTION 	EDS DATE 11-11-2011 FORMAT REV C	DESCRIPTION SCALE NONE SHEET 1
	MFCRIC DIMS. SHOWN IN [BRACKETS]	CONFIDENTIAL: THIS DRAWING AND ITS INFORMATION ARE THE EXCLUSIVE AND CONFIDENTIAL PROPERTY OF REGAL-BELOIT CORPORATION AND ARE NOT TO BE DISCLOSED, DUPLICATED, DISTRIBUTED OR OTHERWISE USED WITHOUT THE WRITTEN CONSENT OF REGAL-BELOIT CORPORATION. ALL RIGHTS RESERVED.		

REVISION:	ECO	REVISADO POR:	T.HUANG	FECHA:	04-18-2012	APROBADO POR:	B.C.SHEN	FECHA:	04-18-2012
C	ECO-0025427								



NOTAS:

- CAJA DE CONDUCTORES PUEDER ROTARSE EN INCREMENTOS DE 90°
- EL MOTOR ES EL ADECUADO PARA CONVERSION DE CAMPOS DESDE LA UBICACION AN F1 Y AN F2
- VENTILACION DE MOTOR: LA ENTRADA DE AIRE ES A TRAVEZ DE LOS ORIFICIOS EN LA CARA DE CADA TAPA Y EXTRAIDA A TRAVEZ DE LAS RANURAS DE VENTILACION AL FINAL DE CADA CARCAZA

DESCRIPCION DEL MOTOR:

ESCUDO 284T DE ACERO A PRUEBA DE GOTEO CON 3 FASES ABIERTAS. OTRO TIPO DE OPERACIONES DE MONTAGE ES ACEPTABLE; SIN EMBARGO CUANDO SEA MONTADO DE CUALQUIER OTRA FORMA MENOS HORIZONTALMENTE NO SERA A PRUEBA DE GOTEO COMO NEMA LO DEFINE.

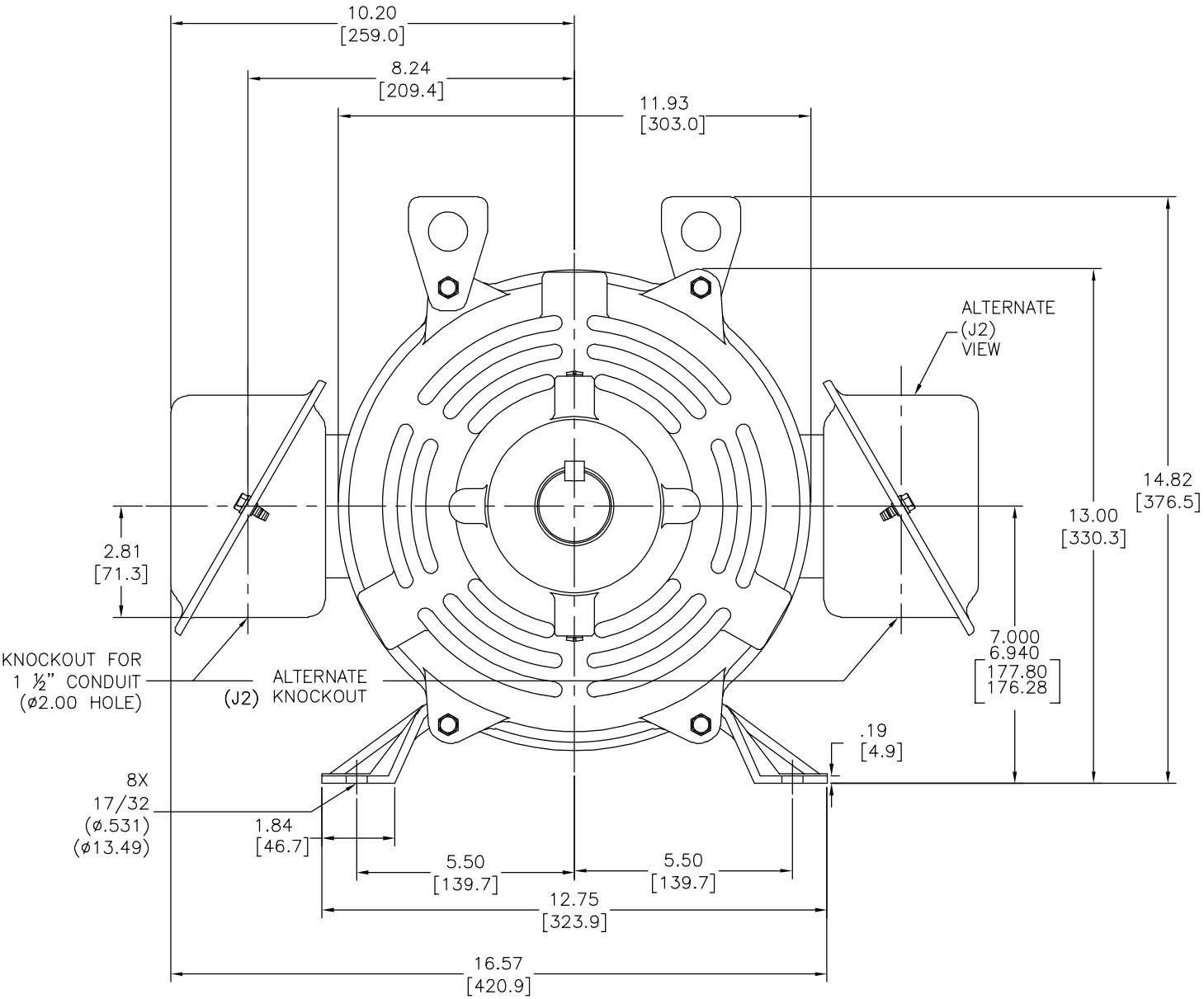
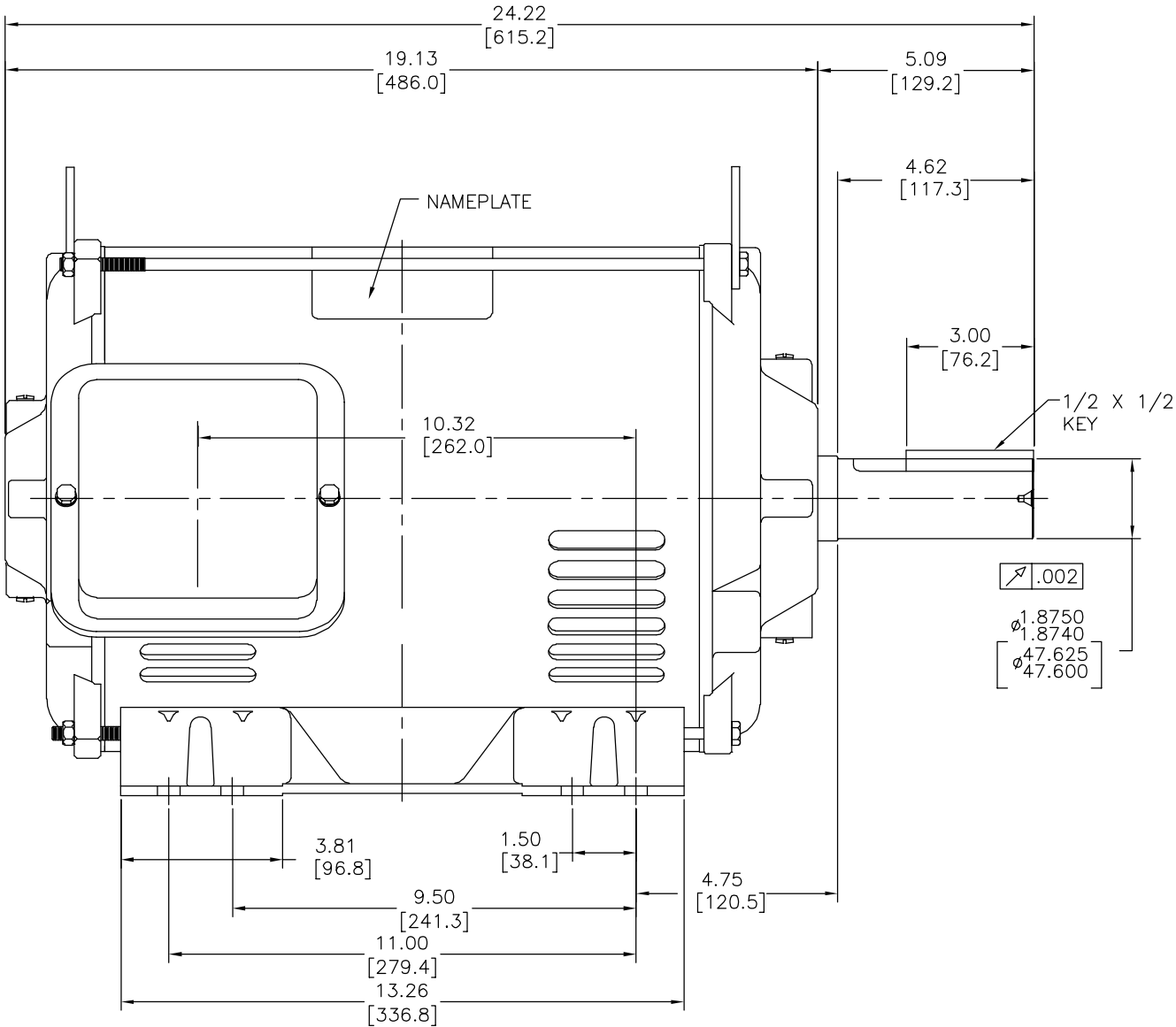
CERTIFICATION OF A.C. MOTORS		
CERTIFIED FOR		
SPEC. NO. _____	ORDER NO. _____	
ORDER I.D. _____	I.D. NO. _____	EMI EMI
TYPE _____	FRAME _____	H.P. _____
R.P.M. _____	VOLTS _____	PHASE _____
HERTZ _____	AMPS _____	CODE _____
REMARKS _____		
APPROVED BY _____ DATE: _____		

CARACTERISTICAS DE GEOMETRIA Y SIMBOLOS: / PLANICIDAD - RECTITUD / ANGULARIDAD L PERPENDICULARIDAD (A ESCUADRA) // PARALELISMO O REDONDEZ (CIRCULARIDAD) H CILINDRICIDAD = PERFIL DE CUALQUIER SUPERFICIE / PERFIL DE CUALQUIER LINEA + VARIACION + POSICION REAL © CONCENTRICIDAD = SIMETRIA	ASME Y14.5M 1994	A MENOS QUE SE ESPECIFIQUE DE OTRA MANERA, LAS TOLERANCIAS DE LAS DIMS. SON LAS SIGUIENTES: PULG. ±.1 ±.02 ±.005 ±.0005 mm ±0.5 ±0.13 ±0.013 ANG. ±.50 GRADOS ELIMINAR REBABAS Y ORILLAS FILOSAS DEL BORDE. PULG. .003-.015 mm 0.1-0.4 FILETEAR ESQUINA: PULG. .020 mm 0.5 MAQUINAR SUPERFICIES PULG. 125 mm 3.2	DIMENSIONES METRICAS MOSTRADAS [PARENTESIS]
--	------------------	--	---

DIBUJADO POR:	AJB	01-14-2004
APROBADO POR:	JAS	01-14-2004
TERCER ANGULO DE PROYECCION		FECHA EDS: 11-11-2011 REV. FORMATO: G
CONFIDENCIAL: ESTE DIBUJO Y SU INFORMACION SON PROPIEDAD DE USO EXCLUSIVO Y CONFIDENCIAL DE REGAL-BELOIT CORPORATION. Y NO DEBERAN SER REVELADOS, DUPLICADOS, DISTRIBUIDOS O USARSE DE OTRA MANERA SIN EL CONSENTIMIENTO ESCRITO DE REGAL-BELOIT CORPORATION. -TODOS LOS DERECHOS RESERVADOS.		

DESCRIPCION:		OUTLINE	
S284T/S286T ODP EE STD		NUMERO DE DIBUJO:	
D		18720601-001	
ESCALA:	NONE	HOJA:	1

版本	ECO	编制	日期	批准	日期
C	ECO-0025427	T.HUANG	04-18-2012	B.C.SHEN	04-18-2012



- NOTES:
- CONDUIT BOX MAY BE ROTATED IN 90° INCREMENTS.
 - MOTOR IS SUITABLE FOR FIELD CONVERSION FROM AN F1 TO AN F2 CONDUIT BOX LOCATION.
 - MOTOR VENTILATION: AIR INTAKE THROUGH OPENINGS IN THE FACE OF EACH BRACKET AND EXHAUSTED THROUGH THE VENT SLOTS ON EACH END OF THE SHELL.

MOTOR DESCRIPTION:

3 PHASE OPEN DRIPPROOF STEEL SHELL 284T OR 286T MOUNTING. OTHER MOUNTING ORIENTATIONS ARE ACCEPTABLE; HOWEVER WHEN MOUNTED OTHER THAN HORIZONTAL; MOTOR WILL NOT BE DRIPPROOF AS DEFINED BY NEMA.

CERTIFICATION OF A.C. MOTORS		
CERTIFIED FOR		
SPEC. NO. _____	ORDER NO. _____	
ORDER I.D. _____	I.D._NO. _____	EMI EMI
TYPE _____	FRAME _____	H.P. _____
R.P.M. _____	VOLTS _____	PHASE _____
HERTZ _____	AMPS _____	CODE _____
REMARKS _____		
APPROVED BY _____ DATE: _____		

形位公差
— 平面度
— 直线度
— 倾斜度
— 垂直度
— 平行度
— 圆度
— 圆柱度
— 圆跳动
— 位置度
— 同轴度
— 对称度

除另有注明
尺寸公差如下:
英寸 .1 .02 .005 .0005
毫米 ±0.5 ±0.13 ±0.013
角度 ±.50 度
清理毛刺和尖棱
英寸 .003-.015 毫米 0.1-0.4
内圆角
英寸 .020 毫米 0.5
表面粗糙度
英制 125 米制 3.2

ASME Y14.5M 1994

第三角投影
机密: 本图纸及相关信息所有权归REGAL-BELOIT CORPORATION
未经REGAL-BELOIT CORPORATION书面授权, 不得泄露、
复制、传播或作其他用途。一版权所有

绘图:	AJB	01-14-2004
批准:	JAS	01-14-2004
图底格式发布日期	11-11-2011	名称
图底格式版本	G	图号
比例	NONE	页号

名称	OUTLINE
图号	S284T/S286T ODP EE STD
比例	18720601-001
页号	1

