

PRODUCT INFORMATION PACKET

Model No: M506M2

Catalog No: M506M2

General Purpose Motors, Drip Proof, 25 HP, 3 Ph, 60 Hz, 460 V, 1740 RPM, S286T



Regal and are trademarks of Regal Rexnord Corporation or one of its affiliated companies.
©2022 Regal Rexnord Corporation, All Rights Reserved. MC017097E

Nameplate Specifications

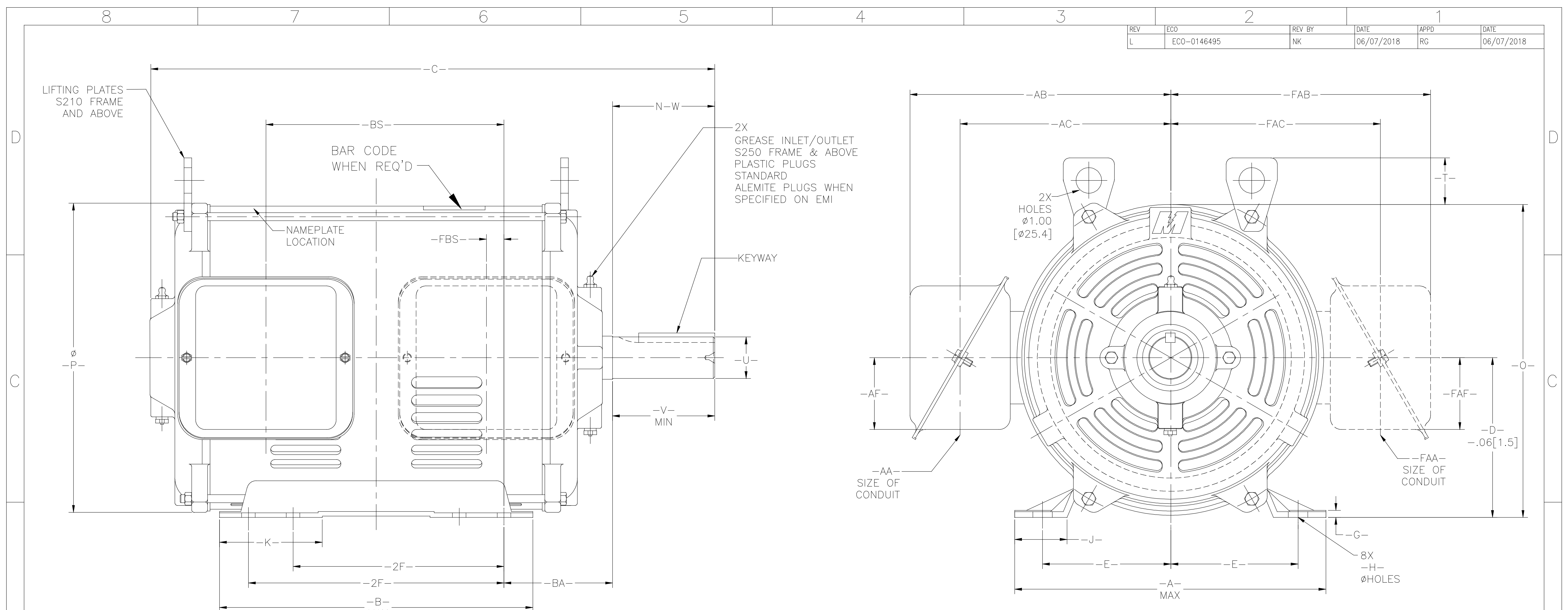
Output HP	25.0/6.25 Hp	Output KW	18.7 kW
Frequency	60 Hz	Voltage	460 V
Current	31.0/12.0 A	Speed	1740/865 rpm
Service Factor	1.15	Phase	3
Duty	Continuous	Insulation Class	F
Frame	S286T	Enclosure	Drip Proof
Thermal Protection	None	Ambient Temperature	40 °C
UL	Recognized	CSA	Y
CE	N	Number of Speeds	2-1-VT

Technical Specifications

Electrical Type	Three Phase	Starting Method	Across The Line
Poles	4/ 8	Rotation	Counterclockwise
Mounting	Rigid Base	Drive End Bearing	Ball
Opp Drive End Bearing	Ball	Frame Material	Rolled Steel
Shaft Type	Keyed	Overall Length	24.22 in
Frame Length	14.00 in	Shaft Diameter	1.875 in
Shaft Extension	5.09 in		
Outline Drawing	80009201-S01	Connection Drawing	80022805.PCX

This is an uncontrolled document once printed or downloaded and is subject to change without notice. Date Created:05/06/2022

REV	ECO	REV BY	DATE	APPD	DATE
L	ECO-0146495	NK	06/07/2018	RG	06/07/2018



FRAME	TERMINAL BOX F1 MTG										TERMINAL BOX F2 MTG					-BA-				
	-AA-	-AB-	-AC-	-AF-	-BS-	-FAA-	-FAB-	-FAC-	-FAF-	-FBS-	-FAA-	-FAB-	-FAC-	-FAF-	-FBS-					
S180	3/4	7.63	193.8	5.94	150.8	2.50	63.5	4.94	125.4	3/4	7.00	177.8	5.63	143.0	2.16	54.8	0.56	14.2	2.75	69.8
S210	1	7.63	193.8	5.94	150.8	2.50	63.5	7.38	187.4	1	7.00	177.8	5.63	143.0	2.16	54.8	0.19	4.8	3.50	88.9
S250	1-1/4	10.19	258.8	8.16	207.3	2.81	71.4	9.32	236.7	1-1/4	10.19	258.8	8.25	209.6	2.85	72.4	0.68	72.3	4.25	107.9
G250	1-1/4	10.19	258.8	8.16	207.3	2.81	71.4	11.07	281.2	1-1/4	10.19	258.8	8.25	209.6	2.85	72.4	0.68	72.3	4.25	107.9
S280	1-1/2	10.19	258.8	8.16	207.3	2.81	71.4	10.32	262.1	1-1/2	10.19	258.8	8.25	209.6	2.85	72.4	0.68	72.3	4.75	120.6

-U- DIM.	TOL. ON -U- DIM.	SHAFT RUNOUT
UP TO 1.500 [38.1]	+0.000 [0.000] -0.005 [-0.12]	UP TO 1.625 [41.2] .002 [0.05]
OVER 1.500 [38.1]	+0.00 [-0.01] -0.03 [-0.03]	OVER 1.625 [41.2] .003 [0.08]

CERTIFICATION OF A.C. MOTORS
 CERTIFIED FOR _____
 SPEC. NO. NO. ORDER NO. _____ NO.
 ORDER I.D. I.D. NO. EMI EMI
 TYPE TYPE FRAME FRAME H.P. H.P.
 R.P.M. RPM VOLTS VOLTS PHASE PHASE
 HERTZ HERTZ AMPS AMPS CODE -
 REMARKS _____
 REMARKS2 _____
 APPROVED BY _____ DATE: _____

FRAME	KEYWAY			-A-	-B-	-C-	-D-	-E-	-2F-	-G-	-H-	-J-	-K-	N-W	-O-	-P-	-T-	-U-	-V-																			
	WIDTH	DEPTH	LENGTH																																			
S182T	0.250	6.35	0.125	3.17	2.50	63.5	9.00	228.6	7.75	196.6	13.65	346.7	4.500	114.3	3.750	95.2	4.500	114.3	0.164	4.16	.406	10.31	1.48	37.6	2.93	74.4	2.75	69.9	8.78	223.0	8.53	216.6	-----	1.125	28.57	2.75	69.8	
S184T	0.250	6.35	0.125	3.17	2.50	63.5	9.00	228.6	7.75	196.6	13.65	346.7	4.500	114.3	3.750	95.2	5.500	139.7	0.164	4.16	.406	10.31	1.48	37.6	2.93	74.4	2.75	69.9	8.78	223.0	8.53	216.6	-----	1.125	28.57	2.75	69.8	
S213T	0.312	7.92	0.156	3.96	3.13	79.5	10.00	254	10.75	273.0	17.28	438.9	5.250	133.35	4.250	107.95	5.500	139.7	0.180	4.57	.406	10.31	1.58	40.1	3.43	87.1	3.38	85.8	9.53	242.0	8.57	217.6	1.77	44.9	1.375	34.9	3.25	82.5
S215T	0.312	7.92	0.156	3.96	3.13	79.5	10.00	254	10.75	273.0	17.28	438.9	5.250	133.35	4.250	107.95	7.000	177.8	0.180	4.57	.406	10.31	1.58	40.1	3.43	87.1	3.38	85.8	9.53	242.0	8.57	217.6	1.77	44.9	1.375	34.9	3.25	82.5
S254T	0.375	9.52	0.188	4.77	3.75	95.3	12.18	309.4	12.25	311.6	22.12	561.8	6.250	158.75	5.000	127	8.250	209.55	0.194	4.92	.531	13.48	2.06	52.3	4.06	103.1	4.00	101.6	12.25	311.1	12.00	304.8	1.82	46.2	1.625	41.2	3.88	98.5
G256T	0.375	9.52	0.188	4.77	3.75	95.3	12.18	309.4	12.25	311.6	23.85	605.8	6.250	158.75	5.000	127	8.250	209.55	0.194	4.92	.531	13.48	2.06	52.3	4.06	103.1	4.00	101.6	12.25	311.1	12.00	304.8	1.82	46.2	1.625	41.2	3.88	98.5
S256T	0.375	9.52	0.188	4.77	3.75	95.3	12.18	309.4	12.25	311.6	22.12	561.8	6.250	158.75	5.000	127	10.000	254	0.194	4.92	.531	13.48	2.06	52.3	4.06	103.1	4.00	101.6	12.25	311.1	12.00	304.8	1.82	46.2	1.625	41.2	3.88	98.5
S284T	0.500	12.7	0.250	6.35	4.38	111.2	12.75	323.8	13.25	336.5	24.25	615.9	7.000	177.8	5.500	139.7	9.500	241.3	0.194	4.92	.531	13.48	1.81	45.9	3.81	96.8	4.62	117.3	13.00	330.2	12.00	304.8	1.82	46.2	1.875	47.6	4.50	114.3
S284TS	0.375	9.52	0.188	4.77	3.00	76.2	12.75	323.8	13.25	336.5	22.88	581.2	7.000	177.8	5.500	139.7	9.500	241.3	0.194	4.92	.531	13.48	1.81	45.9	3.81	96.8	3.25	82.5	13.00	330.2	12.00	304.8	1.82	46.2	1.625	41.2	3.12	79.2
S286T	0.500	12.7	0.250	6.35	4.38	111.2	12.75	323.8	13.25	336.5	24.25	615.9	7.000	177.8	5.500	139.7	11.000	279.4	0.194	4.92	.531	13.48	1.81	45.9	3.81	96.8	4.62	117.3	13.00	330.2	12.00	304.8	1.82	46.2	1.875	47.6	4.50	114.3
S286TS	0.375	9.52	0.188	4.77	3.00	76.2	12.75	323.8	13.25	336.5	22.88	581.2	7.000	177.8	5.500	139.7	11.000	279.4	0.194	4.92	.531	13.48	1.81	45.9	3.81	96.8	3.25	82.5	13.00	330.2	12.00	304.8	1.82	46.2	1.625	41.2	3.12	79.2

800114
800112
ENG. REF.

<p>GEOMETRIC CHARACTERISTICS & SYMBOLS</p> <ul style="list-style-type: none"> — FLATNESS — STRAIGHTNESS — ANGULARITY — PERPENDICULARITY (SQUARENESS) — PARALLELISM — ROUNDNESS (CIRCULARITY) — CYLINDRICITY — PROFILE OF ANY SURFACE — PROFILE OF ANY LINE — RUNOUT — TRUE POSITION — CONCENTRICITY — SYMMETRY <p>ASME Y14.5M 1994</p>	<p>UNLESS OTHERWISE SPECIFIED DIM. TOLERANCES ARE AS FOLLOWS: INCH X XX XXX XXXX INCH ±.1 ±.02 ±.005 ±.0005 mm ±0.5 ±0.13 ±0.013 ANG. ±.50 DEG REMOVE BURRS & BREAK SHARP EDGES: INCH .003-.015 mm 0.1-0.4 CORNER FILLETS TO: INCH .020 mm 0.5 MACHINE SURFACES: INCH 125/ mm 3/2</p>	<p>DR BY: SBC APPD: MAS EDS DATE: 04-25-1995 04-25-1994 11-11-2011 FORMAT REV H</p>	<p>REGAL REGAL-BELOIT CORPORATION</p> <p>DESCRIPTION: OUTLINE MOT-S180/S280 F1/F2 STDT</p> <p>SIZE: D DWG NO: 80009201</p> <p>SCALE: NONE SHEET: 1</p>
---	--	--	---