

PRODUCT INFORMATION PACKET



Model No: M413M2
Catalog No: M413M2
10 HP, General Purpose Motor, 3 phase, 1800 RPM, 460 V, S256T Frame, Drip Proof
General Purpose Motors



Regal and Century are trademarks of Regal Rexnord Corporation or one of its affiliated companies.
©2021 Regal Rexnord Corporation, All Rights Reserved. MC017097E





Nameplate Specifications

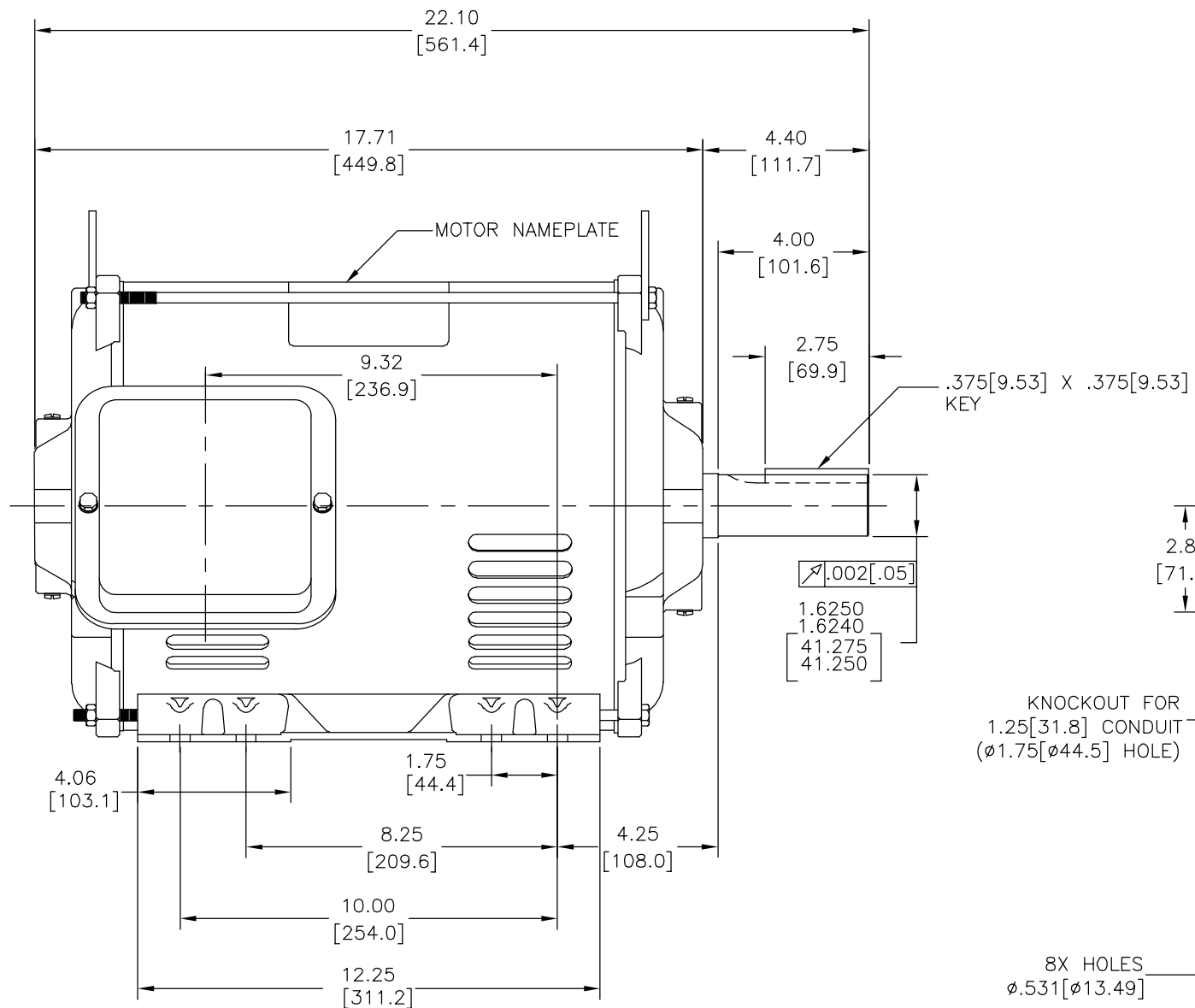
Output HP	10.0/4.4 Hp	Output KW	7.5 kW
Frequency	60 Hz	Voltage	460 V
Current	12/6.3 A	Speed	1775/1175 rpm
Service Factor	1.15	Phase	3
Duty	Continuous	Insulation Class	F
Frame	S256T	Enclosure	Drip Proof
Thermal Protection	None	Ambient Temperature	40 °C
UL	Recognized	CSA	Y
CE	N	Number of Speeds	2-2-VT

Technical Specifications

Electrical Type	Three Phase	Starting Method	Across The Line
Poles	4/6	Rotation	Reversible Counterclockwise
Mounting	Rigid Base	Drive End Bearing	Ball
Opp Drive End Bearing	Ball	Frame Material	Rolled Steel
Shaft Type	Keyed	Overall Length	22.10 in
Frame Length	13.00 in	Shaft Diameter	1.625 in
Shaft Extension	4.4 in		
Outline Drawing	M413M2-S01	Connection Drawing	80022806.PCX

This is an uncontrolled document once printed or downloaded and is subject to change without notice. Date Created:10/07/2021

REV	ECO	REV BY	DATE	APPD	DATE
A	ECO-0026192	I.LOPEZ	08-23-2012	H.SANCHEZ	08-23-2012

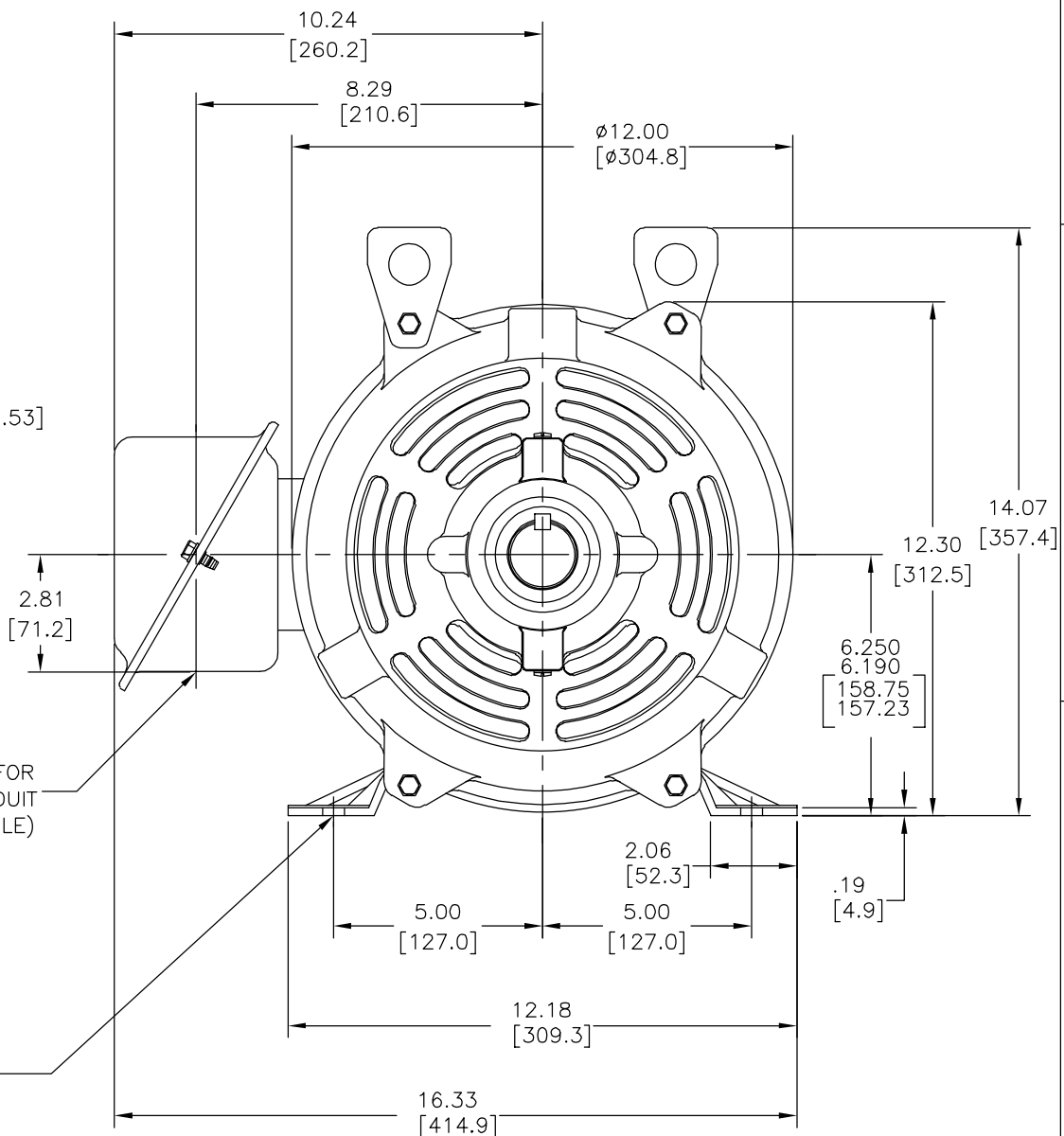


NOTES:

1. CONDUIT BOX MAY BE ROTATED IN 90° INCREMENTS.
2. MOTOR IS SUITABLE FOR FIELD CONVERSION FROM AN F1 TO AN F2 CONDUIT BOX LOCATION.
3. MOTOR VENTILATION: AIR INTAKE THROUGH OPENINGS IN THE FACE OF EACH BRACKET AND EXHAUSTED THROUGH THE VENT SLOTS ON EACH END OF THE SHELL.

KNOCKOUT FOR
1.25[31.8] CONDUIT
(ϕ 1.75[ϕ 44.5] HOLE)

8X HOLES
 ϕ .531[ϕ 13.49]



MOTOR DESCRIPTION:

3 PHASE OPEN DRIPPROOF STEEL SHELL 254T OR 256T MOUNTING.
OTHER MOUNTING ORIENTATIONS ARE ACCEPTABLE; HOWEVER WHEN MOUNTED OTHER THAN HORIZONTAL; MOTOR WILL NOT BE DRIPPROOF AS DEFINED BY NEMA.

GEOMETRIC CHARACTERISTICS & SYMBOLS
□ FLATNESS
— STRAIGHTNESS
∠ ANGULARITY
⊥ PERPENDICULARITY (SQUARENESS)
// PARALLELISM
○ ROUNDNESS (CIRCULARITY)
⊘ CYLINDRICITY
△ PROFILE OF ANY SURFACE
∩ PROFILE OF ANY LINE
↑ RUNOUT
⊕ TRUE POSITION
◎ CONCENTRICITY
≡ SYMMETRY

ASME Y14.5M 1994

UNLESS OTHERWISE SPECIFIED
DIM. TOLERANCES ARE AS FOLLOWS:
INCH X XX XXX XXXX
mm \pm .1 \pm .02 \pm .005 \pm .0005
mm \pm 0.5 \pm 0.13 \pm 0.013
ANG. \pm .50 DEG
REMOVE BURRS & BREAK SHARP EDGES:
INCH .003-.015 mm 0.1-0.4
CORNER FILLETS TO:
INCH .020 mm 0.5
MACHINE SURFACES:
INCH 125 mm 3.2
METRIC DIMS. SHOWN IN [BRACKETS]

DR BY:

I.LOPEZ

08-23-2012

APPD:

D.JAMORA

08-23-2012

THIRD ANGLE PROJECTION



EDS DATE 11-11-2011

FORMAT REV G

CONFIDENTIAL: THIS DRAWING AND ITS INFORMATION ARE THE EXCLUSIVE AND CONFIDENTIAL PROPERTY OF REGAL-BELOIT CORPORATION AND ARE NOT TO BE DISCLOSED, DUPLICATED, DISTRIBUTED OR OTHERWISE USED WITHOUT THE WRITTEN CONSENT OF REGAL-BELOIT CORPORATION.
-ALL RIGHTS RESERVED.



REGAL-BELOIT CORPORATION

DESCRIPTION

MODEL-IHP
OUTLINE

SIZE

C

DWG NO

M413M2

SCALE

NONE

SHEET

1

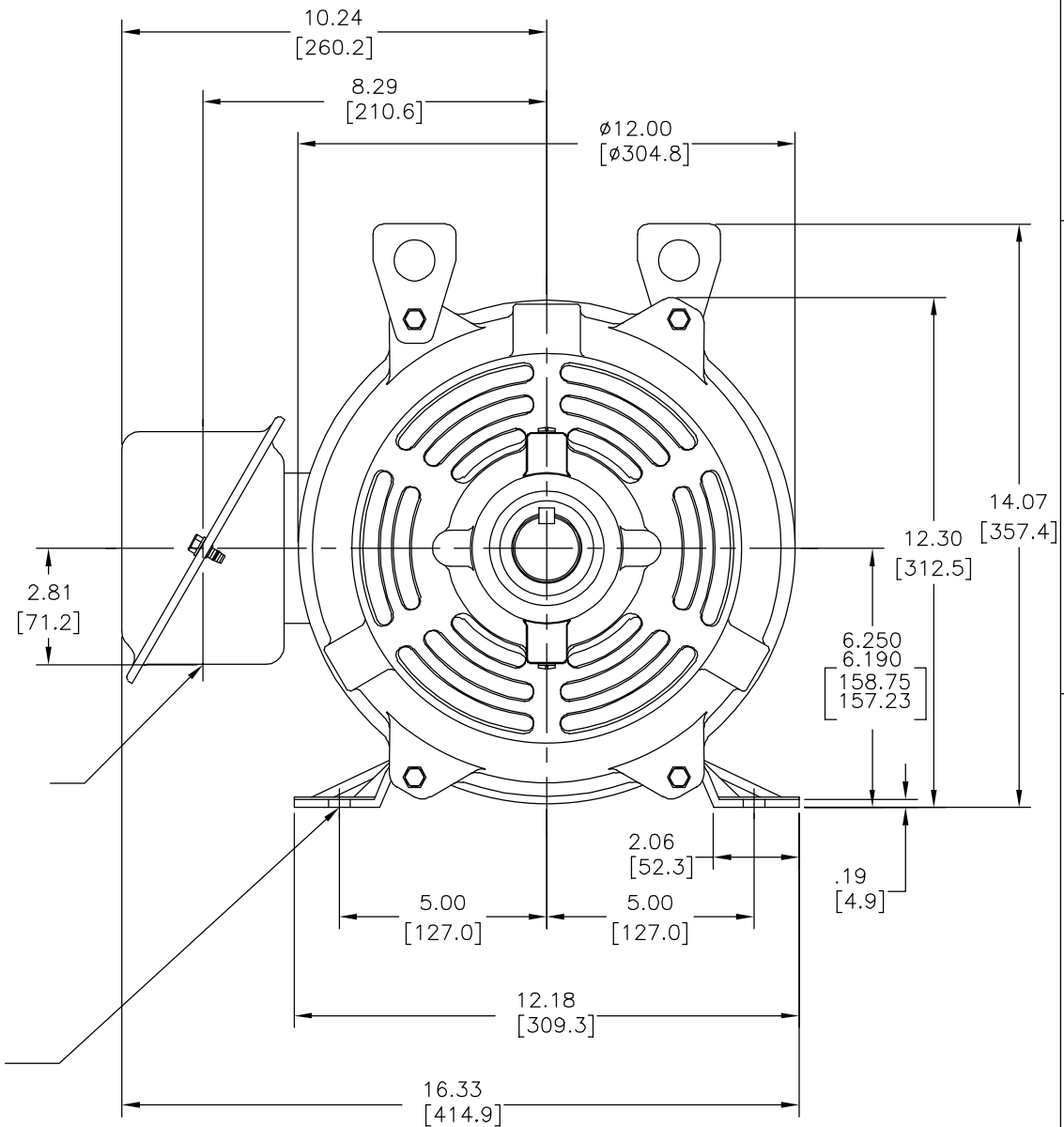
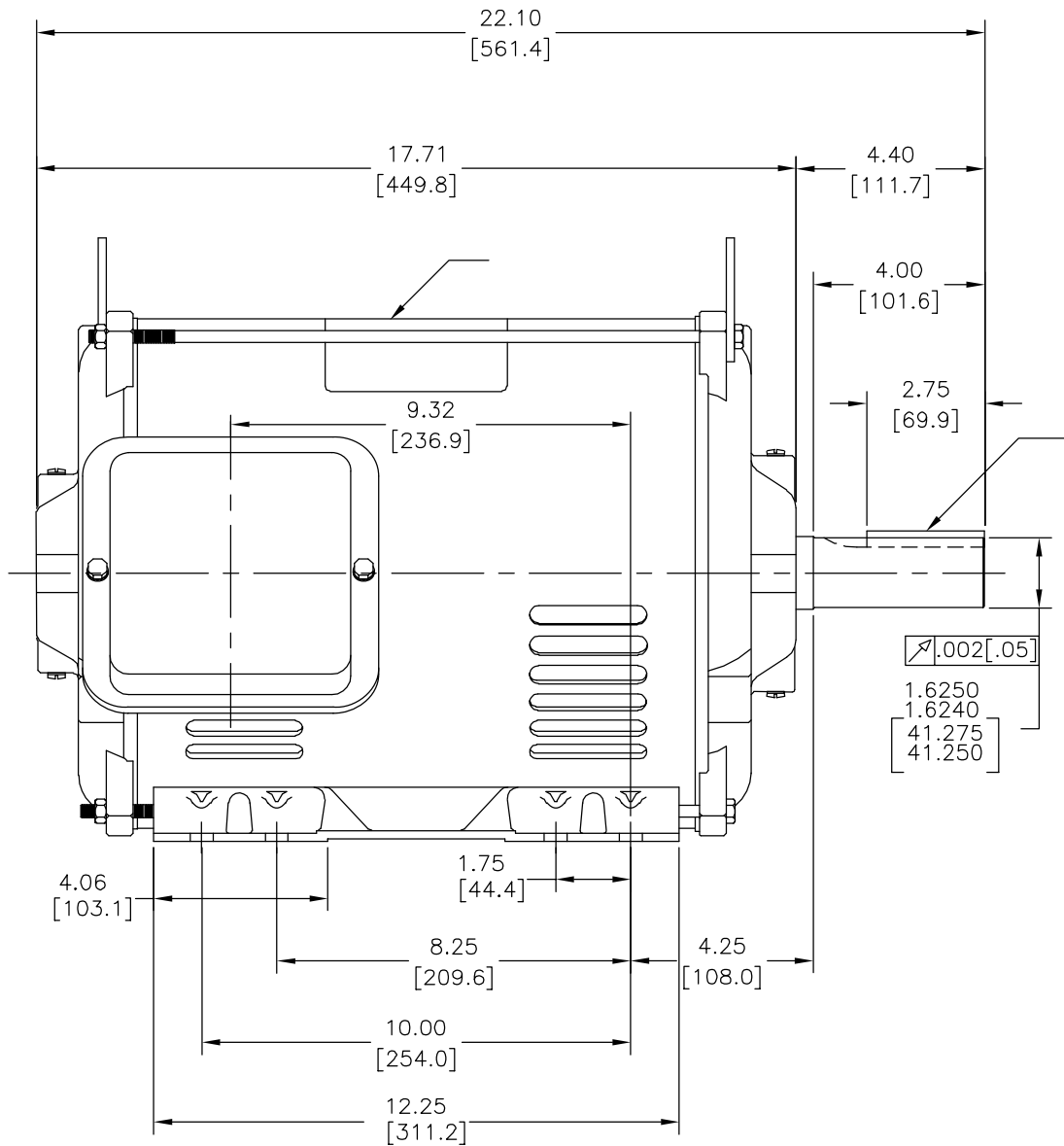
4

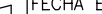

3

2

1

REVISION:	ECO	REVISADO POR:	FECHA:	APROBADO POR:	FECHA:
A	ECO-0026192	I.LOPEZ	08-23-2012	H.SANCHEZ	08-23-2012



CARACTERISTICAS DE GEOMETRIA Y SIMBOLOS □ PLANICIDAD — RECTITUD ∠ ANGULARIDAD ⊥ PERPENDICULARIDAD (A ESCUADRA) // PARALELISMO ○ REDONDEZ (CIRCULARIDAD) ⌀ CILINDRICIDAD △ PERFIL DE CUALQUIER SUPERFICIE ∧ PERFIL DE CUALQUIER LINEA ↑ VARIACION ⊕ POSICION REAL ◎ CONCENTRICIDAD ≡ SIMETRIA ASME Y14.5M 1994	A MENOS QUE SE ESPECIFIQUE DE OTRA MANERA, LAS TOLERANCIAS DE LAS DIMS; SON LAS SIGUIENTES: <table><tr><td></td><td>X</td><td>XX</td><td>XXX</td><td>XXXX</td></tr><tr><td>PULG</td><td>±.1</td><td>±.02</td><td>±.005</td><td>±.0005</td></tr><tr><td>mm</td><td>±0.5</td><td>±0.13</td><td>±0.013</td><td></td></tr></table> ANG. ±.50 GRADOS ELIMINAR REBABAS Y ORILLAS FILOSAS DEL BORDE. <table><tr><td>PULG</td><td>.003-.015</td><td>mm</td><td>0.1-0.4</td></tr></table> FILETEAR ESQUINA: PULG .020 mm 0.5 MAQUINAR SUPERFICIES PULG 125 mm 3.2		X	XX	XXX	XXXX	PULG	±.1	±.02	±.005	±.0005	mm	±0.5	±0.13	±0.013		PULG	.003-.015	mm	0.1-0.4	DIBUJADO POR: I.LOPEZ 08-23-2012 APROBADO POR: D.JAMORA 08-23-2012 TERCER ANGULO DE PROYECCION  FECHA EDS: 11-11-2011 REV. FORMATO: G	 REGAL-BELOIT CORPORATION		
			X	XX	XXX	XXXX																		
		PULG	±.1	±.02	±.005	±.0005																		
		mm	±0.5	±0.13	±0.013																			
PULG	.003-.015	mm	0.1-0.4																					
DESCRIPCION: MODEL-IHP OUTLINE																								
TAMAÑO: C	NUMERO DE DIBUJO: M413M2																							
ESCALA: NONE		HOJA: 1																						

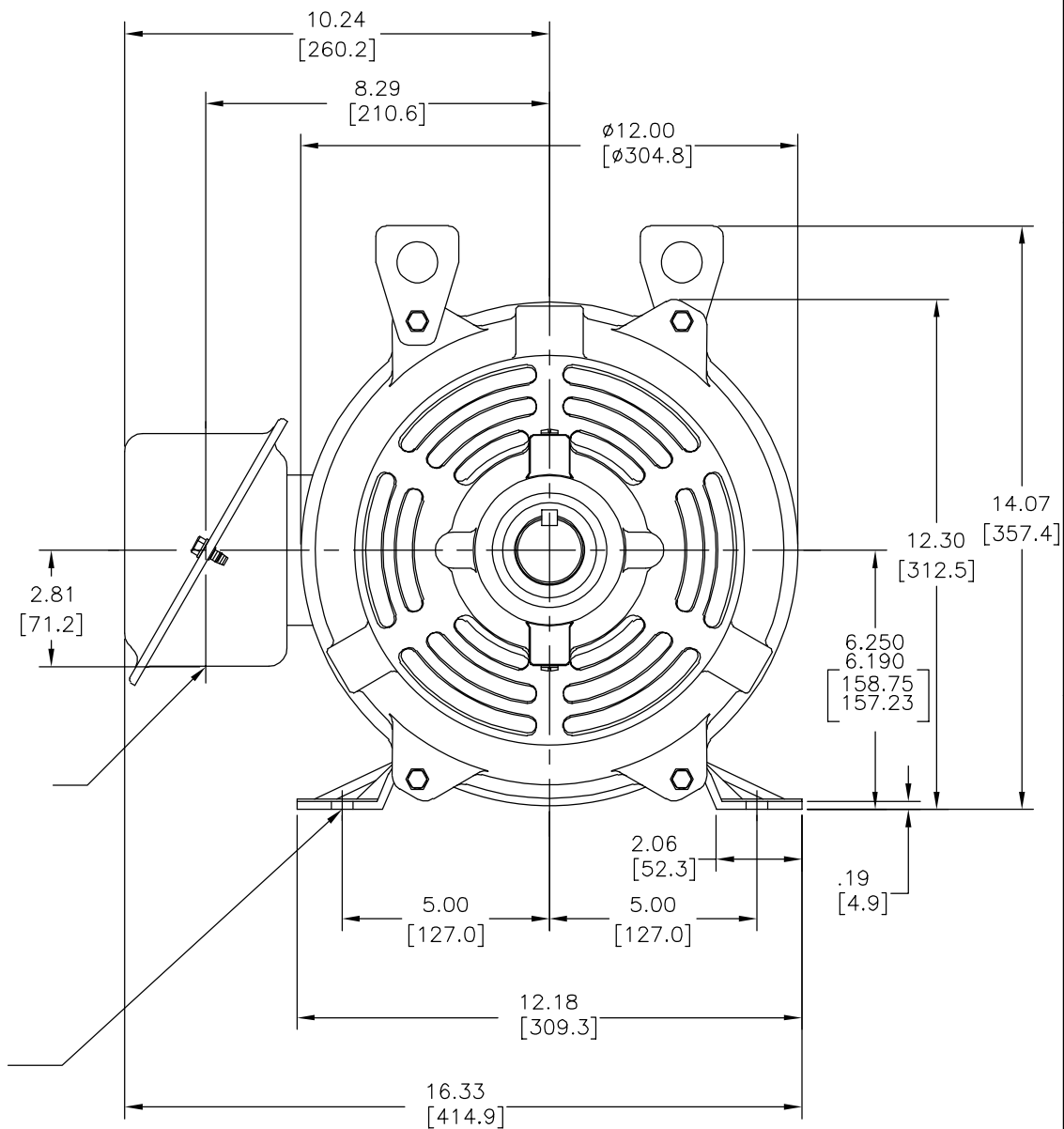
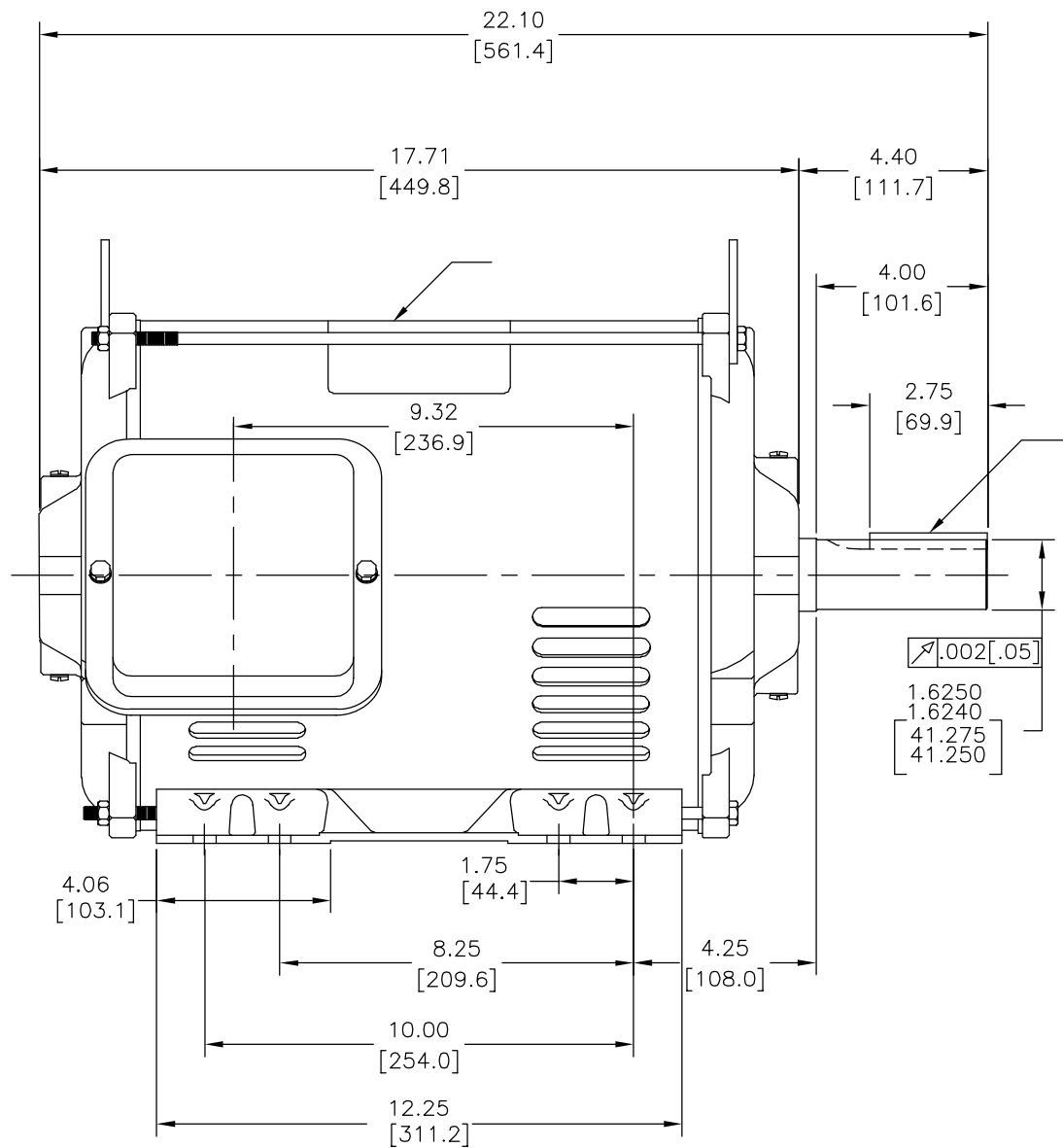
4

3

2

1

版本	ECO	编制	日期	批准	日期
A	ECO-0026192	I.LOPEZ	08-23-2012	H.SANCHEZ	08-23-2012



形位公差
□ 平面度
— 直线度
∠ 倾斜度
⊥ 垂直度
∥ 平行度
○ 圆度
⊙ 圆柱度
△ 面轮廓度
△ 线轮廓度
⌒ 圆跳动
⊕ 位置度
⊗ 同轴度
≡ 对称度

ASME Y14.5M 1994

除另有注明
尺寸公差如下:
英寸 X XX XXX XXXX
毫米 ±0.1 ±0.02 ±0.005 ±0.0005
毫米 ±0.5 ±0.13 ±0.013
角度 ±.50 度
清理毛刺和尖棱
英寸 .003-.015 毫米 0.1-0.4
内圆角
英寸 .020 毫米 0.5
表面粗糙度
英制 125 米制 3.2
米制尺寸显示在[]

绘图: I.LOPEZ 08-23-2012
批准: D.JAMORA 08-23-2012
第三角投影
图幅: 11-11-2011
图幅: G
机密: 本图纸及相关信息所有权归REGAL-BELOIT CORPORATION。
未经REGAL-BELOIT CORPORATION书面授权, 不得泄露、
复制、传播或作其他用途。—版权所有



名称: MODEL-IHP
OUTLINE
图幅: C 图号: M413M2
比例: NONE 页号: 1

4

3

2

1