

# PRODUCT INFORMATION PACKET



Model No: M321M2

Catalog No: M321M2

7.5/1.9 HP 2 speed General Purpose Motor, 3 phase, 1800/900 RPM, 200-230 V, 213T Frame, ODP  
General Purpose Motors



Regal and Century are trademarks of Regal Rexnord Corporation or one of its affiliated companies.  
©2021 Regal Rexnord Corporation, All Rights Reserved. MC017097E





### Nameplate Specifications

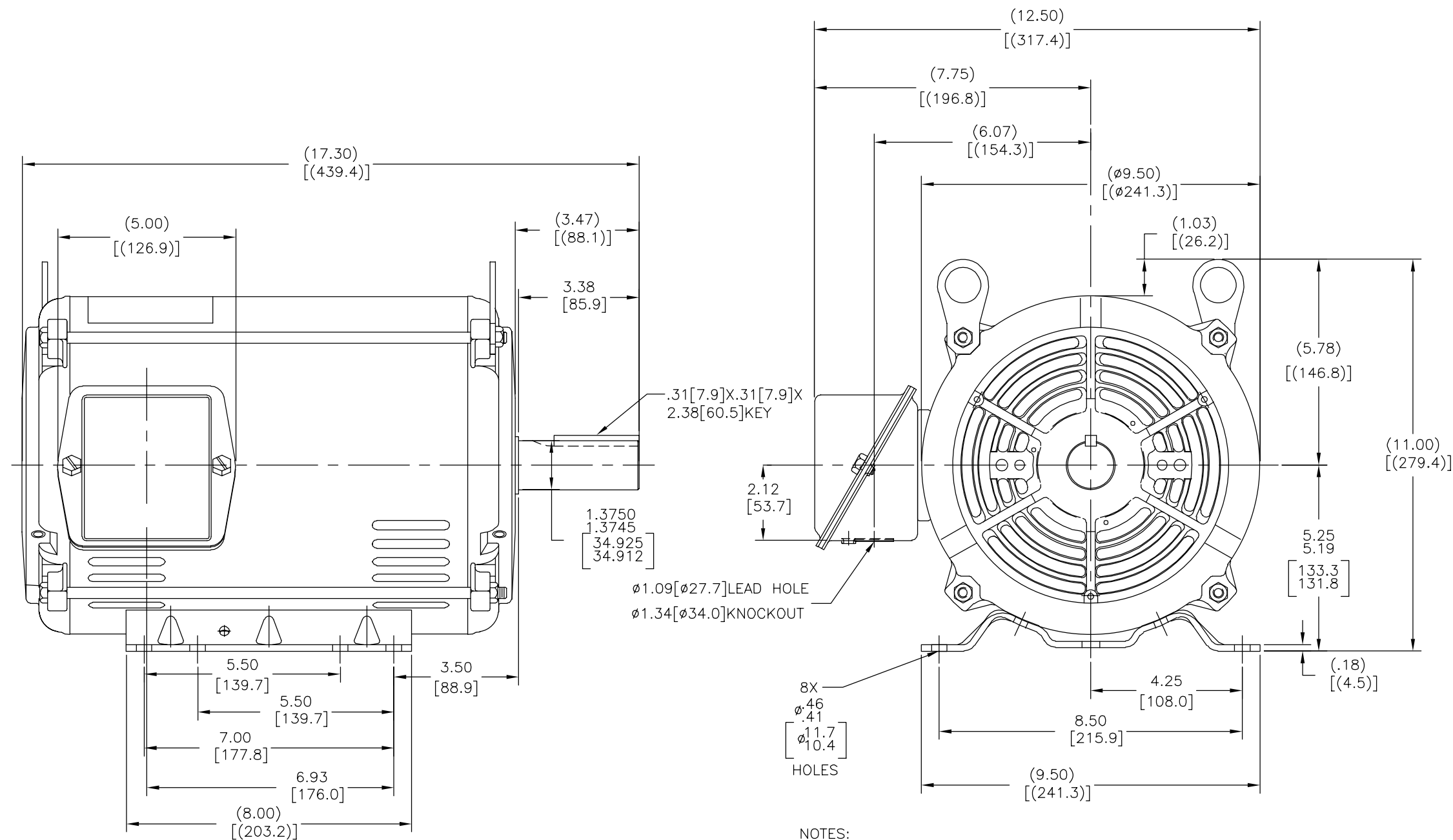
Output HP	7.5/1.9 Hp	Output KW	5.6 kW
Frequency	60 Hz	Voltage	200-230 V
Current	21.4-19.4/7.8-7.6 A	Speed	1760/880 rpm
Service Factor	1.15	Phase	3
Duty	Continuous	Insulation Class	F
Frame	213T	Enclosure	Open Drip Proof
Thermal Protection	None	Ambient Temperature	40 °C
UL	Recognized	CSA	Y
CE	Y	Number of Speeds	2-1-VT

### Technical Specifications

Electrical Type	Polyphase	Starting Method	Across The Line
Poles	4/ 8	Rotation	Reversible
Mounting	Rigid Base	Drive End Bearing	Ball
Opp Drive End Bearing	Ball	Frame Material	Rolled Steel
Shaft Type	Keyed	Overall Length	17.30 in
Frame Length	11.15 in	Shaft Diameter	1.375 in
Shaft Extension	3.47 in		
Connection Drawing	A-EE7322CY	Outline Drawing	SS86500CY-1115-S01

This is an uncontrolled document once printed or downloaded and is subject to change without notice. Date Created:10/12/2021

REV	ECO	REV BY	DATE	APPD	DATE
A	0035621	M.AVILA	07-24-2013	J.ORTEGA	07-24-2013



GEOMETRIC CHARACTERISTICS & SYMBOLS  
□ FLATNESS  
— STRAIGHTNESS  
∠ ANGULARITY  
⊥ PERPENDICULARITY (SQUARENESS)  
// PARALLELISM  
○ ROUNDNESS (CIRCULARITY)  
⊙ CYLINDRICITY  
△ PROFILE OF ANY SURFACE  
⌒ PROFILE OF ANY LINE  
⌀ RUNOUT  
⊕ TRUE POSITION  
⊙ CONCENTRICITY  
≡ SYMMETRY

ASME Y14.5M 1994

UNLESS OTHERWISE SPECIFIED  
DIM. TOLERANCES ARE AS FOLLOWS:  
INCH X XX XXX XXXX  
mm ±0.5 ±0.13 ±0.013  
ANG. ±50 DEG  
REMOVE BURRS & BREAK SHARP EDGES:  
INCH .003-.015 mm 0.1-0.4  
CORNER FILLETS TO:  
INCH .020 mm 0.5  
MACHINE SURFACES:  
INCH 125 mm 3.2  
METRIC DIMS. SHOWN IN [BRACKETS]

DR BY:

M.AVILA

07-24-2013

APPD:

D.JAMORA

07-24-2013

THIRD ANGLE PROJECTION

⊕

⊕

EDS DATE 11-11-2011

FORMAT REV H

CONFIDENTIAL: THIS DRAWING AND ITS INFORMATION ARE  
THE EXCLUSIVE AND CONFIDENTIAL PROPERTY OF REGAL-  
BELOIT CORPORATION AND ARE NOT TO BE DISCLOSED,  
DUPLICATED, DISTRIBUTED OR OTHERWISE USED WITHOUT  
THE WRITTEN CONSENT OF REGAL-BELOIT CORPORATION.  
-ALL RIGHTS RESERVED.

REGAL

REGAL-BELOIT CORPORATION

DESCRIPTION

OUTLINE

SIZE

C

DWG NO

SS86500CY-1115

SCALE

NONE

SHEET

1

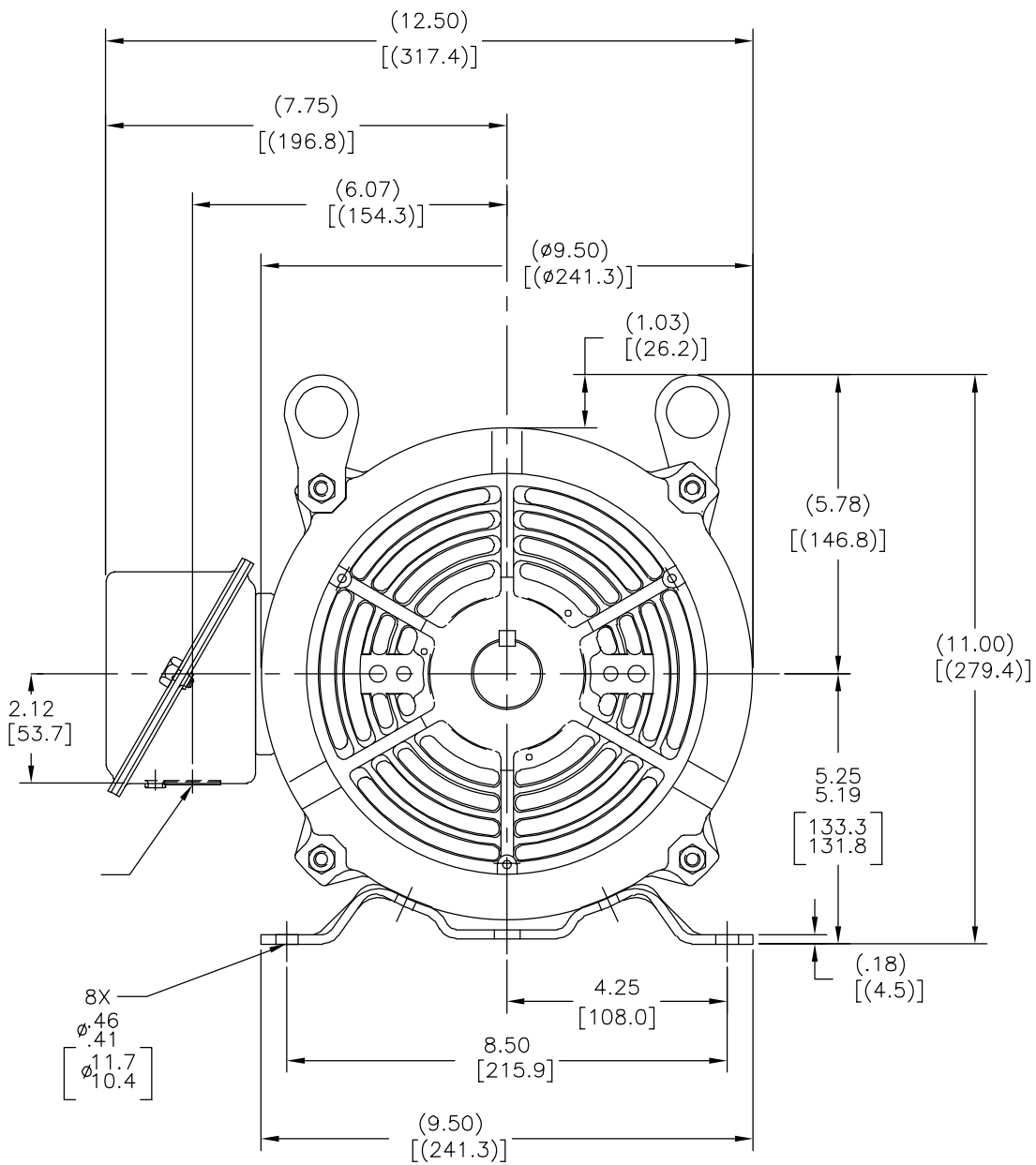
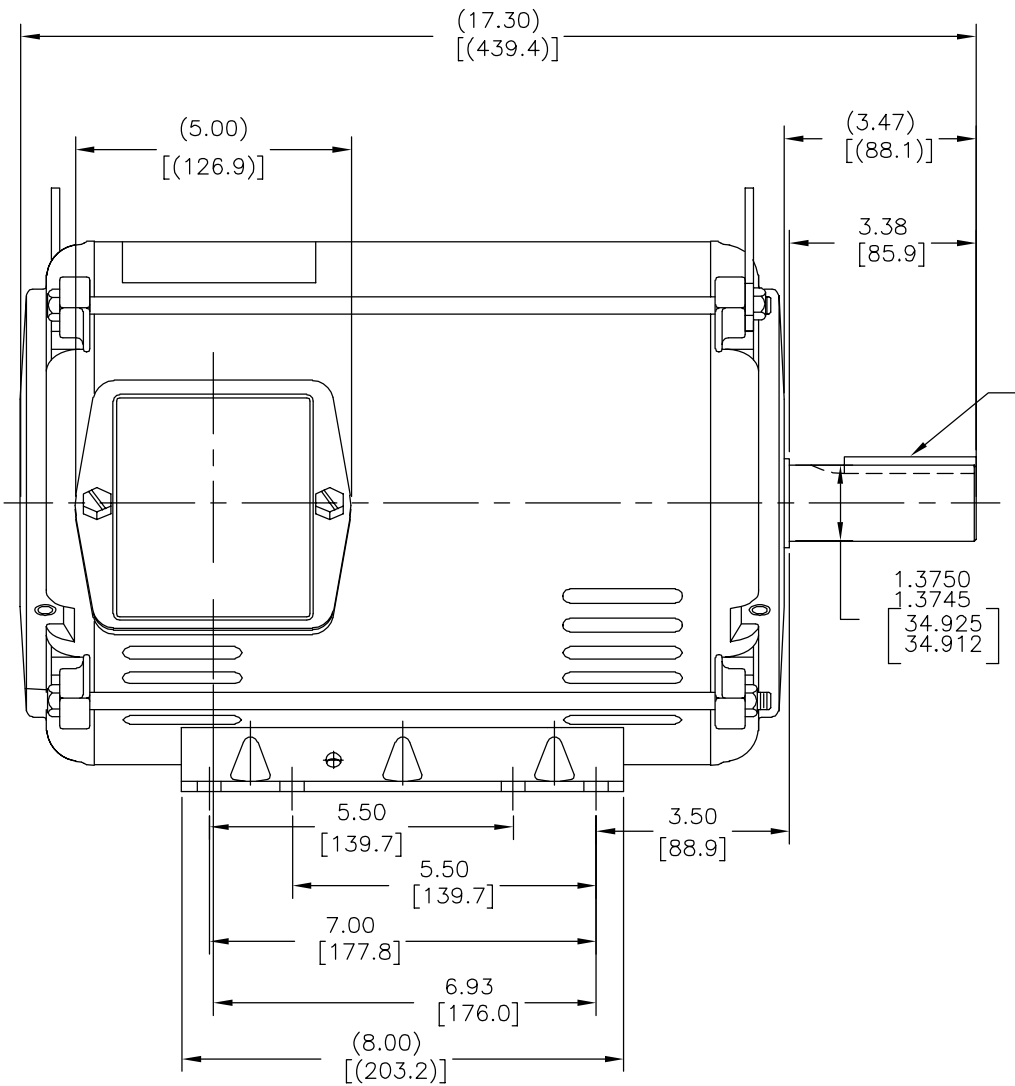
4

3

2

1

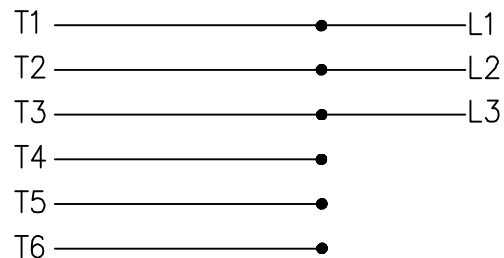
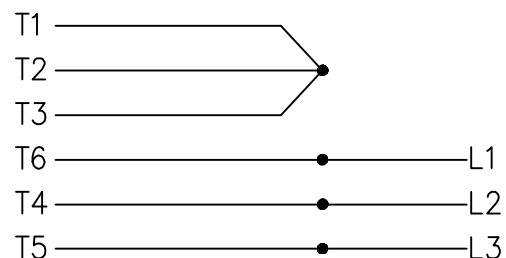
A	0035621	M.AVILA	07-24-2013	J.ORTEGA	07-24-2013
---	---------	---------	------------	----------	------------



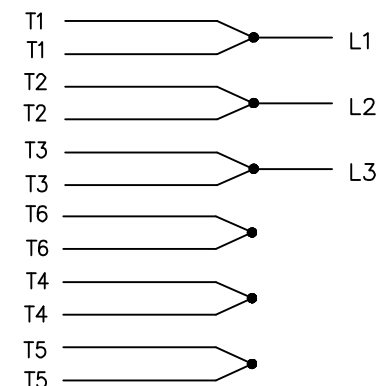
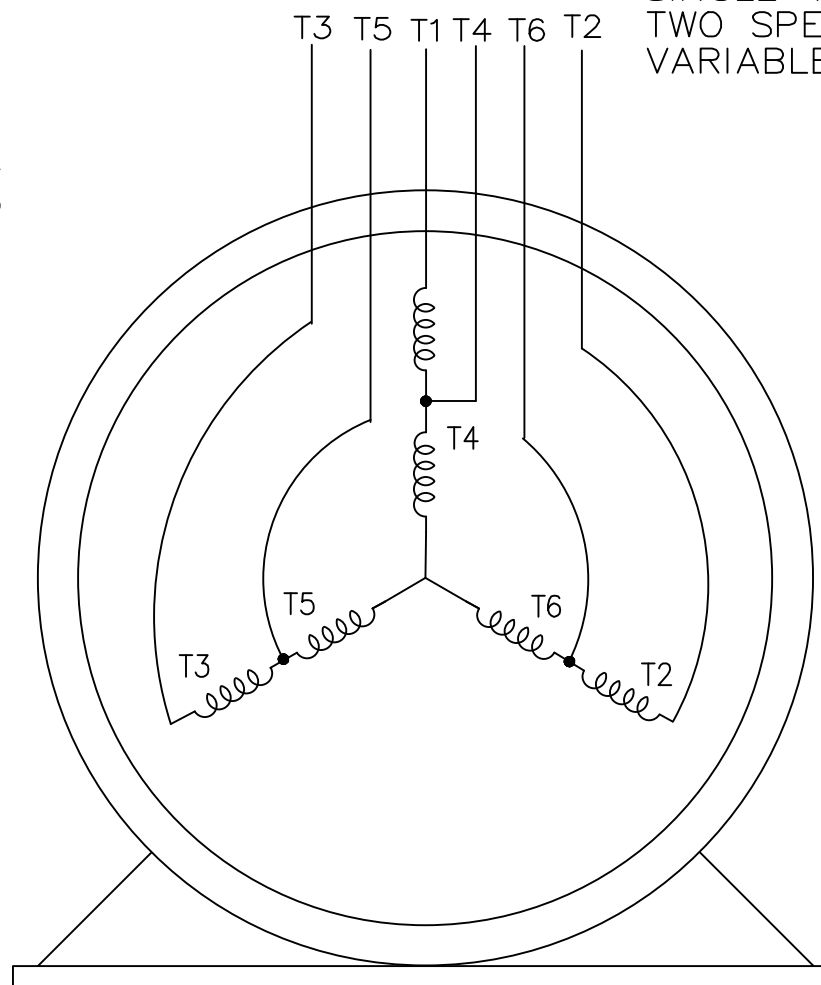
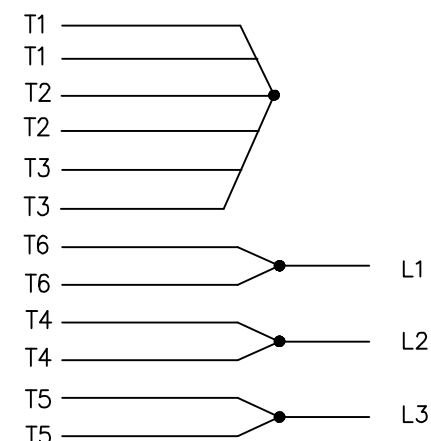
<div>ASME Y14.5M 1994</div>		M.AVILA	07-24-2013	<div><div>REGAL</div>REGAL-BELOIT CORPORATION</div>		
		D.JAMORA	07-24-2013			
			11-11-2011	OUTLINE		
			H			
				C	SS86500CY-1115	
		NONE		1		

ASME Y14.5M 1994

A-EE7322CY

LOW SPEEDHIGH SPEED

THREE PHASE MOTOR  
SINGLE VOLTAGE  
TWO SPEED-SGL.WDG. FOR DUEL LEADS  
VARIABLE TORQUE

LOW SPEEDHIGH SPEED

VIEW OF TERMINAL END

T612C  
T48B



DRAWN GR 03/29/12

CHK ST 03/29/12

APPD

SCALE 1=1

REF EE7322

FMF

PREV

TITLE CONNECTION DIAGRAM  
3 $\phi$ -SINGLE VOLTAGE-2 SPEED.

MAT'L.

FINISH

NO.	REVISION	BY & DATE	CHK	ANG	TOLERANCES UNLESS SPECIFIED	
					DEC.	INCHES
					.X	$\pm .1$
					.XX	$\pm .02$
					.XXX	$\pm .005$
					.XXXX	$\pm .0005$
						$\pm 7'30''$

THIS DRAWING IN DESIGN AND DETAIL IS OUR PROPERTY AND MUST NOT BE USED EXCEPT  
IN CONNECTION WITH OUR WORK ALL RIGHTS OF DESIGN AND INVENTION ARE RESERVED  
THIS IS AN ELECTRONICALLY GENERATED DOCUMENT - DO NOT SCALE THIS PRINT

RFP  
DIST WA

CAD FILE A-EE7322CY

SIZE A DRAWING NO. PAGE OF REV.  
A-EE7322CY