

PRODUCT INFORMATION PACKET



Model No: M315M2

Catalog No: M315M2

7.5/3.33 HP 2 speed General Purpose Motor, 3 phase, 1800/1200 RPM, 460 V, 215T Frame, ODP
General Purpose Motors



Regal and Century are trademarks of Regal Rexnord Corporation or one of its affiliated companies.
©2021 Regal Rexnord Corporation, All Rights Reserved. MC017097E





Nameplate Specifications

Output HP	7.5/3.33 Hp	Output KW	5.6 kW
Frequency	60 Hz	Voltage	460 V
Current	10/5.6 A	Speed	1755/1175 rpm
Service Factor	1.15	Phase	3
Duty	Continuous	Insulation Class	F
Frame	215T	Enclosure	Drip Proof
Thermal Protection	No	Ambient Temperature	40 °C
UL	Recognized	CSA	Y
CE	Y	Number of Speeds	2

Technical Specifications

Electrical Type	Polyphase	Starting Method	Across The Line
Poles	4/6	Rotation	Reversible
Mounting	Rigid Base	Drive End Bearing	Ball
Opp Drive End Bearing	Ball	Frame Material	Rolled Steel
Shaft Type	Keyed	Overall Length	17.30 in
Frame Length	11.15 in	Shaft Diameter	1.375 in
Shaft Extension	3.47 in		
Connection Drawing	A-EE7317-CY	Outline Drawing	SS86500CY-1115-S01

This is an uncontrolled document once printed or downloaded and is subject to change without notice. Date Created:10/12/2021



- | | | | | | | |
|--|---|--|--------------------------|-------------------------------------|-----------------------------------|------------------------|
| GEOMETRIC CHARACTERISTICS & SYMBOLS
▮ FLATNESS
— STRAIGHTNESS
⊥ ANGULARITY
⊥ PERPENDICULARITY (SQUARENESS)
// PARALLELISM
○ ROUNDNESS (CIRCULARITY)
∅ CYLINDRICITY
▵ PROFILE OF ANY SURFACE
▽ PROFILE OF ANY LINE
↗ RUNOUT
⊕ TRUE POSITION
⊙ CONCENTRICITY
≡ SYMMETRY | UNLESS OTHERWISE SPECIFIED
DIM. TOLERANCES ARE AS FOLLOWS:
X XX XXX XXXX
INCH $\pm 1.1 \pm 0.2 \pm 0.005 \pm 0.0005$
mm $\pm 0.5 \pm 0.13 \pm 0.013$
ANG. $\pm 50 \text{ DEG}$
REMOVE BURRS & BREAK SHARP EDGES:
INCH .003—.015 mm 0.1—0.4
CORNER FILLETS TO:
INCH .020 mm 0.5
MACHINE SURFACES:
INCH $\frac{125}{32}$ mm $\frac{3.2}{}$ | DR BY: M.AVILA
APPD: D.JAMORA | 07-24-2013
07-24-2013 | EDS DATE 11-11-2011
FORMAT REV H | REGAL
REGAL-BELOIT CORPORATION | DESCRIPTION
OUTLINE |
| ASME Y14.5M 1994 | METRIC DIMS. SHOWN IN [BRACKETS] | CONFIDENTIAL: THIS DRAWING AND ITS INFORMATION ARE THE EXCLUSIVE AND CONFIDENTIAL PROPERTY OF REGAL-BELOIT CORPORATION AND ARE NOT TO BE DISCLOSED, DUPLICATED, DISTRIBUTED OR OTHERWISE USED WITHOUT THE WRITTEN CONSENT OF REGAL-BELOIT CORPORATION. —ALL RIGHTS RESERVED. | | | SIZE C DWG NO SS86500CY-1115 | SCALE NONE SHEET 1 |

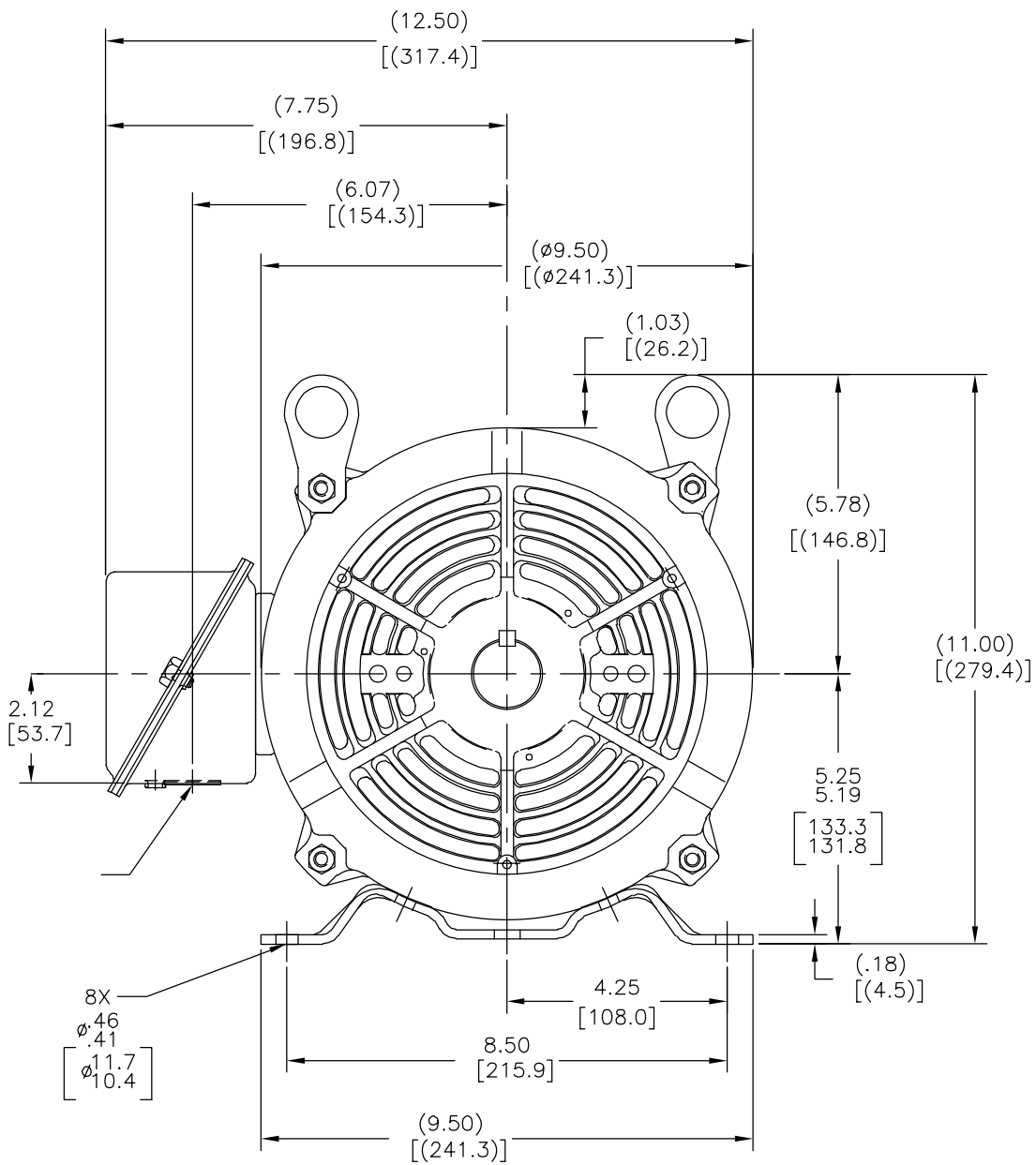
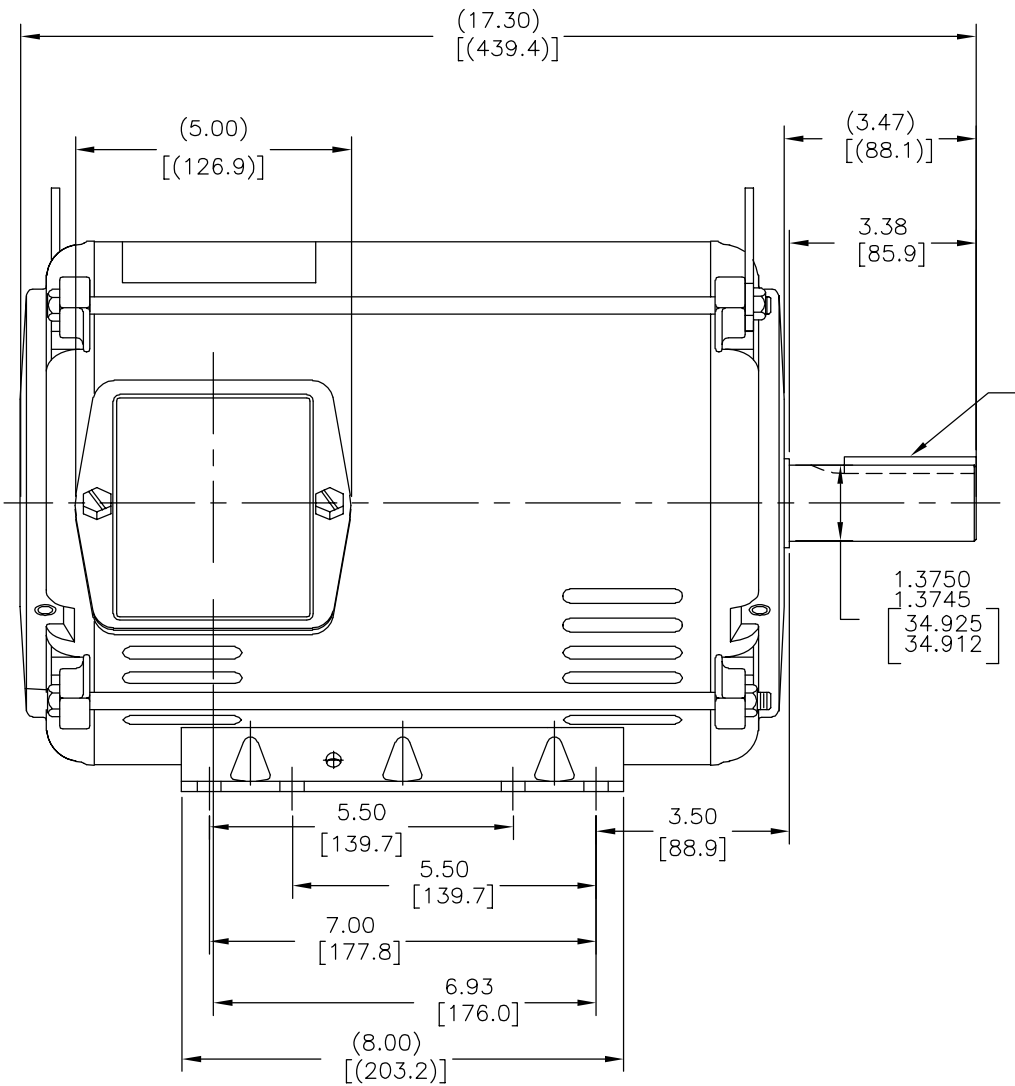
4

3

2

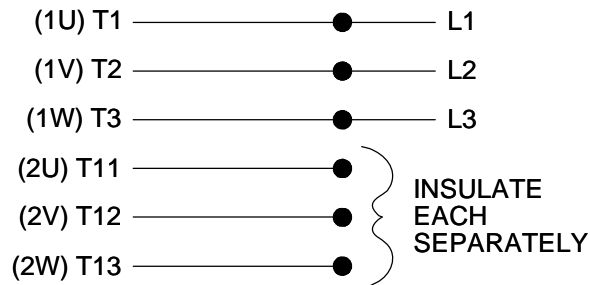
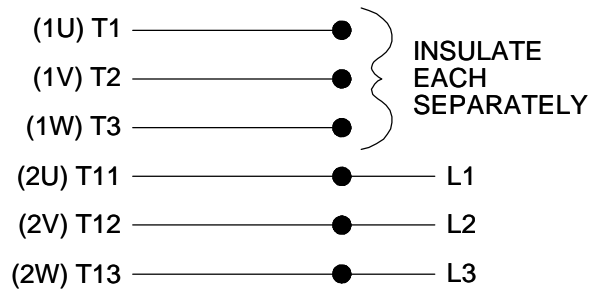
1

A	0035621	M.AVILA	07-24-2013	J.ORTEGA	07-24-2013
---	---------	---------	------------	----------	------------

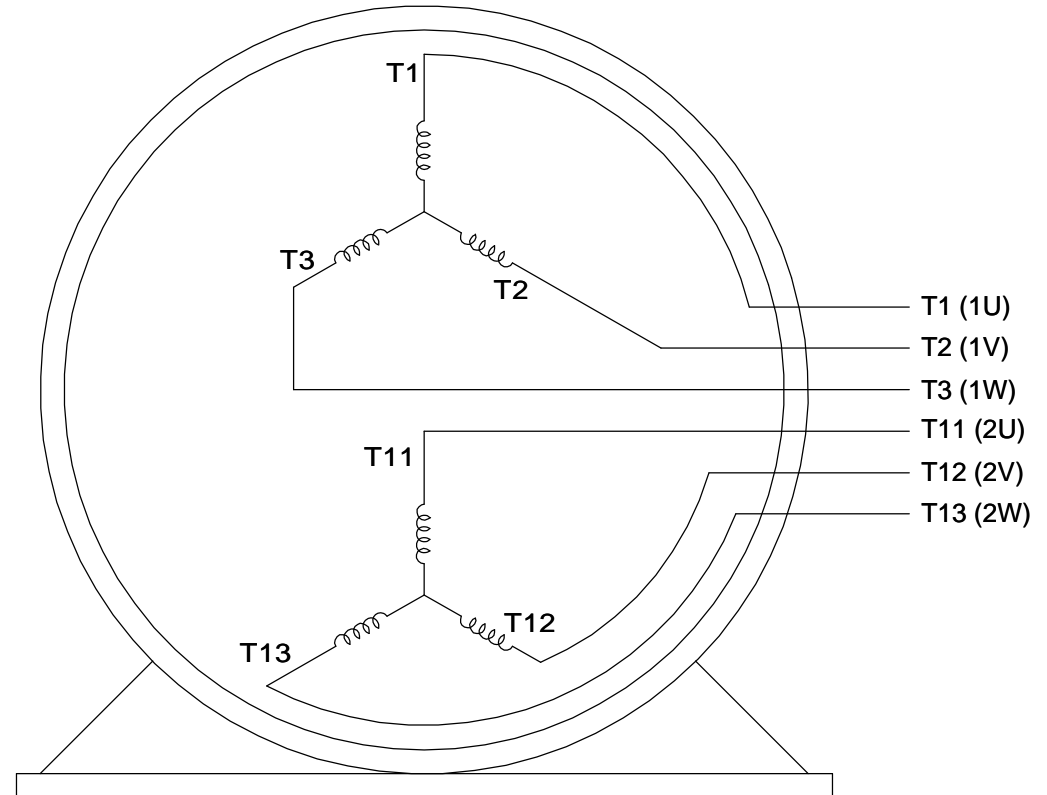


<div>ASME Y14.5M 1994</div>		M.AVILA	07-24-2013	<div>REGAL</div> REGAL-BELOIT CORPORATION	OUTLINE			
		D.JAMORA	07-24-2013					
		<div><div></div><div></div></div>			11-11-2011	C	SS86500CY-1115	
					H			
					NONE		1	



ASME Y14.5M 1994

LOW SPEEDHIGHSPEED

THREE PHASE, SINGLE VOLT, 6 LEAD 2 SPEED REVERSIBLE MOTOR

VIEW OF TERMINAL END

TO REVERSE ROTATION ON
EITHER SPEED: INTERCHANGE
ANY 2 LEADS ON THE
WINDING IN USE.

DRAWING REVISION C	REVISION BY JJB	DATE 10-25-2017		DRAWN BY LZ	 Regal Beloit America, Inc.		
ECO ECO-0132917	APPROVED BY TLB	DATE 10-30-2017		DATE 01-05-1994	DESCRIPTION CONN DIAGRAM-INTERNAL 3 PHASE - SINGLE - 2 SPEED REVERSIBLE		
ECO DESCRIPTION REVISED PER ECO & UPDATED TO STANDARDS COPYRIGHT REGAL BELOIT AMERICA, INC. ALL RIGHTS RESERVED. PROPRIETARY AND CONFIDENTIAL INFORMATION - THIS DOCUMENT IS THE PROPERTY OF REGAL BELOIT AMERICA, INC. ("OWNER") AND CONTAINS OWNER'S PROPRIETARY INFORMATION. ANY PERSON, CORPORATION OR OTHER FIRM RECEIVING IT IS DEEMED, BY RECEIVING IT, TO AGREE THAT IT, AND/OR ANY PART OF IT, SHALL NOT BE DISCLOSED TO ANY PERSON, CORPORATION OR OTHER ENTITY, DUPLICATED, AND/OR USED, EXCEPT AS EXPRESSLY APPROVED IN WRITING IN ADVANCE BY OWNER. THIS DOCUMENT SHALL BE RETURNED TO OWNER UPON REQUEST. IT MAY BE SUBJECT TO CERTAIN RESTRICTIONS UNDER APPLICABLE EXPORT CONTROL LAWS AND REGULATIONS.				APPROVED BY GK			
				DATE 01-17-1994			
				REFERENCE	MATERIAL		PROCESS/FINISH
			THIRD ANGLE PROJECTION		SIZE A	DRAWING NUMBER EE7317	SHEET 1 OF 1