

PRODUCT INFORMATION PACKET



Model No: M220M2

Catalog No: M220M2

2/0.9 HP 2 speed General Purpose Motor, 3 phase, 1800/1200 RPM, 200-230 V, 182T Frame, ODP
General Purpose Motors



Regal and Century are trademarks of Regal Rexnord Corporation or one of its affiliated companies.
©2021 Regal Rexnord Corporation, All Rights Reserved. MC017097E





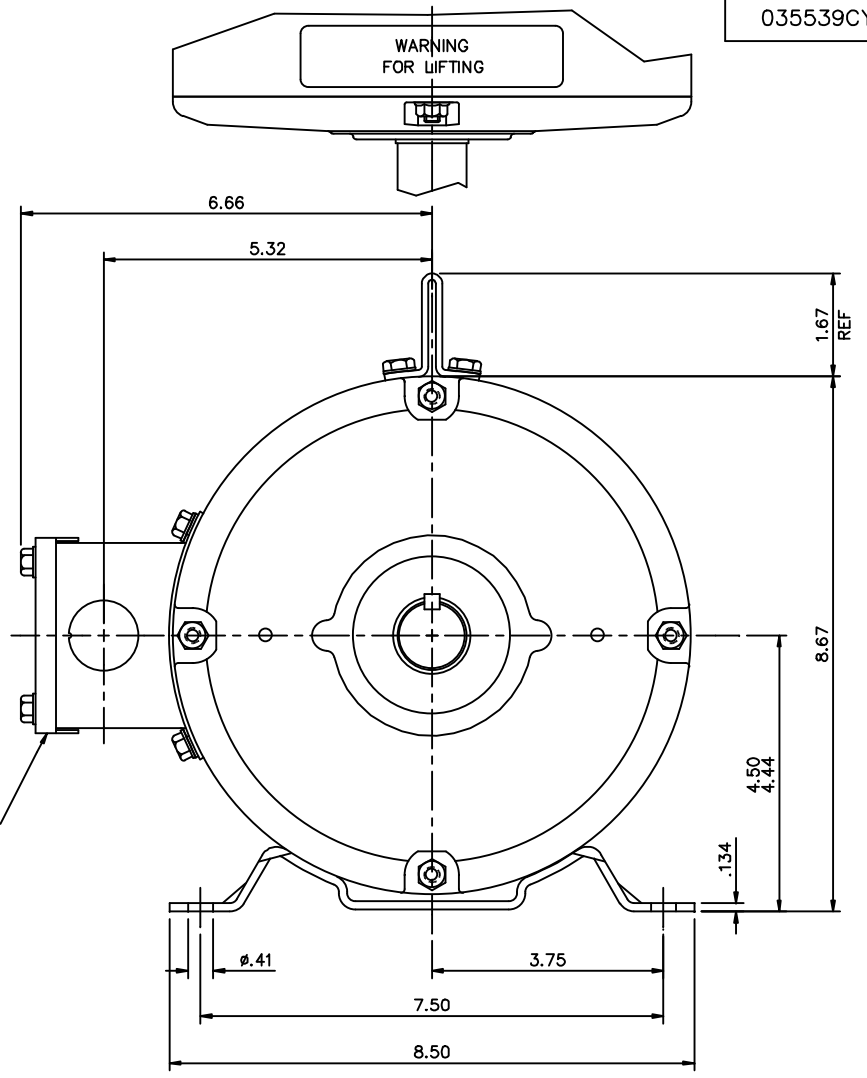
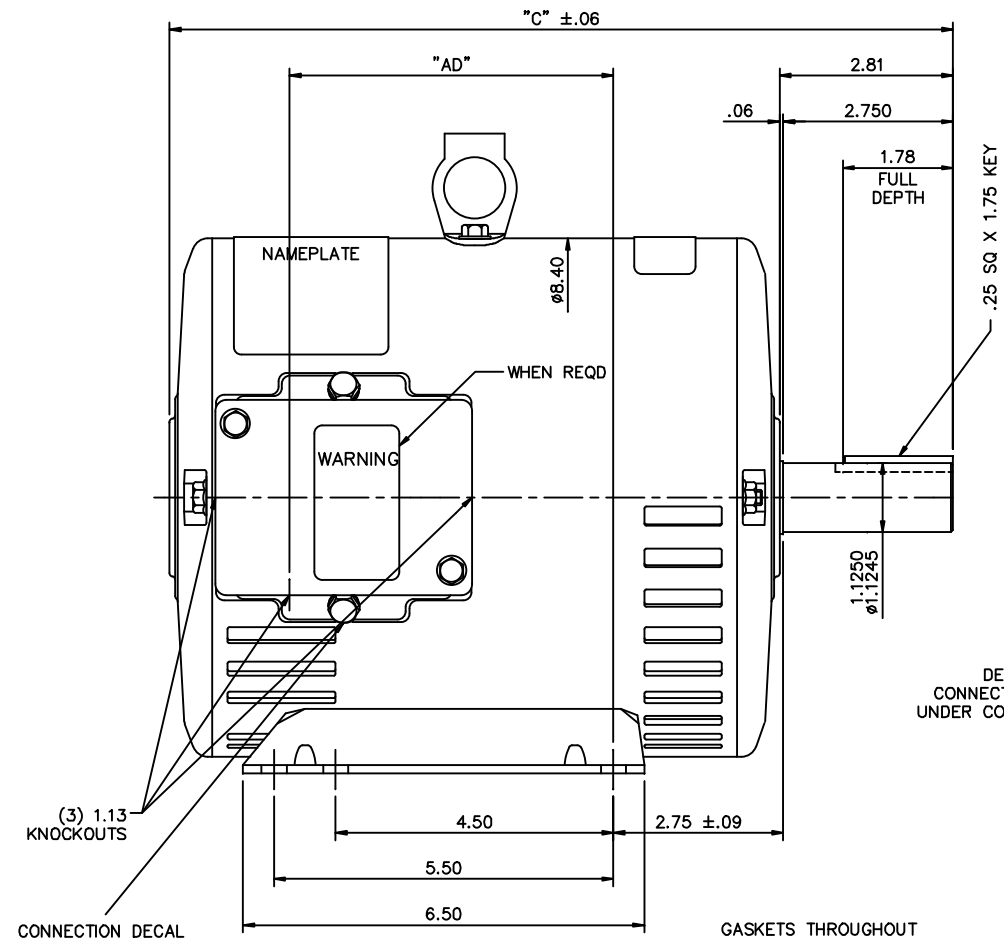
Nameplate Specifications

Output HP	2/0.9 Hp	Output KW	1.5 kW
Frequency	60 Hz	Voltage	200-230 V
Current	6.6-6.4/3.8-3.9 A	Speed	1765/1175 rpm
Service Factor	1.15	Phase	3
Duty	Continuous	Insulation Class	F
Frame	182T	Enclosure	Open Drip Proof
Thermal Protection	No	Ambient Temperature	40 °C
UL	Recognized	CSA	Y
CE	Y	Number of Speeds	2-1-VT

Technical Specifications

Electrical Type	Polyphase	Starting Method	Across The Line
Poles	4/6	Rotation	Reversible
Mounting	Rigid Base	Drive End Bearing	Ball
Opp Drive End Bearing	Ball	Frame Material	Rolled Steel
Shaft Type	Keyed	Overall Length	12.69 in
Frame Length	8.50 in	Shaft Diameter	1.125 in
Shaft Extension	2.81 in		
Outline Drawing	035539CY	Connection Drawing	005046.01CY


This is an uncontrolled document once printed or downloaded and is subject to change without notice. Date Created:10/07/2021



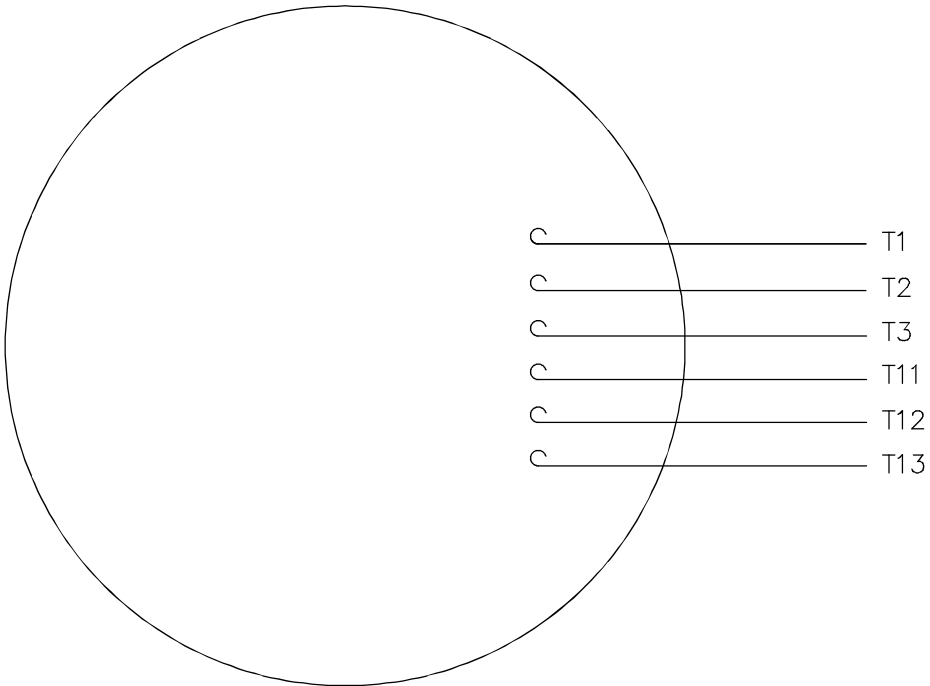
CONNECTION DECAL
NOTE UNDER COVER

GASKETS THROUGHOUT

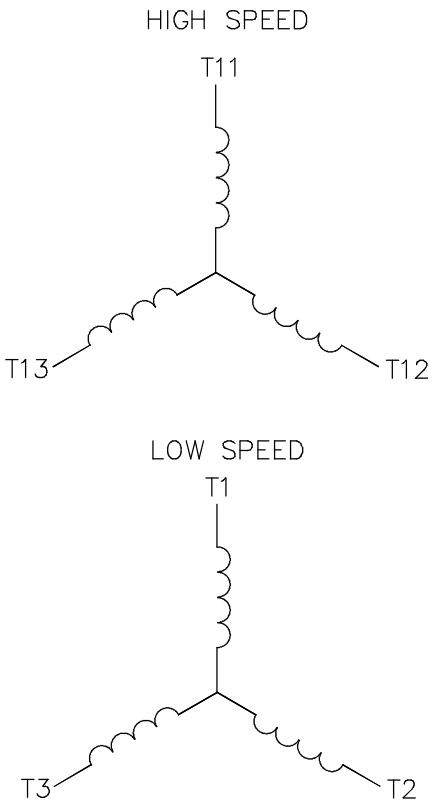
DASH NO.	"C"	"AD"
850	12.69	5.25
900	13.19	5.75
950	13.69	6.25
1000	14.19	6.75
1050	14.69	7.25
1100	15.19	7.75
1150	15.69	8.25

				TOLERANCES UNLESS SPECIFIED			DRAWN GR 03/27/12	
				DEC.	INCHES		CHK ST 03/27/12	
				.X	±.1	TITLE OUTLINE - 180T FRAME DRIP PROOF - RIGID	APPD	
				.XX	±.03		SCALE 1-2	
				.XXX	±.005		REF 035539	
1	ADDED DECAL CONNECTION NOTE.		GR 06/18/12	ST	.XXXX ±.0005	MAT'L GENERAL PURPOSE	FMF	
NO.		REVISION	BY & DATE	CHK	ANG ±1/2"	FINISH	PREV	
THIS DRAWING IN DESIGN AND DETAIL IS OUR PROPERTY AND MUST NOT BE USED EXCEPT IN CONNECTION WITH OUR WORK ALL RIGHTS OF DESIGN AND INVENTION ARE RESERVED THIS IS AN ELECTRONICALLY GENERATED DOCUMENT - DO NOT SCALE THIS PRINT				RFP		CAD FILE 035539CY	SIZE B	DRAWING NO. 035539CY
				DIST NLV				REV. 1


VIEW FROM OUTSIDE OF MOTOR AT SWITCH END.



LINE LEADS



	L1	L2	L3
HIGH SPEED	T11	T12	T13
LOW SPEED	T1	T2	T3

				TOLERANCES UNLESS OTHERWISE SPECIFIED							
				DECIMALS							
				.00	± .01	DRAWN GR 08/06/12	TITLE EXTERNAL WIRING DIAGRAM TYPE "T" W/O PROTECTOR				
				.000	± .005	CH'K'D. SR 08/06/12					
				.0000	± .0005	APPR.	MAT'L. DECAL – 004040 2WDG./2 SPEED 1Y–1Y				
NO.	REVISION		BY	DATE	FRACTIONS	± 1/64				SCALE 1=1	
THIS DRAWING IN DESIGN AND DETAIL IS OUR PROPERTY AND MUST NOT BE USED EXCEPT IN CONNECTION WITH OUR WORK ALL RIGHTS OF DESIGN AND INVENTION ARE RESERVED					ANGLES	± 1/2°	REF. 00504601	FINISH		SIZE A	DRAWING NO. 005046–01CY
					INCH/MM		FMF				
									4 of 4		